

GRAND/VISUAL RIP

FUJIFILM EDITION

- ▶ Adobe PDF Print Engine (APPE) eliminates problems with PDFs
- ▶ One RIP Solution - support for over 800 printers & cutters
- ▶ Analyze cost on each job printed
- ▶ Help designers match corporate spot colors with new Color Book
- ▶ Save 15-20% on ink usage with Ink Optimization
- ▶ Support for all Fujifilm printers
- ▶ Backed by Fujifilm service & support



Now You Can... Have One Workflow Solution. From Proof to Print to Cut.

Did you choose your current large format RIP or do you have various RIPs that came bundled with each printer you bought? With what you know now about your production needs, how would you design your workflow? What would it look like? Ever think about having one workflow that drives everything from the aqueous proofer to the solvent roll press to the UV flatbed? And what about that cutter or the Computer to Screen device or imagesetter?

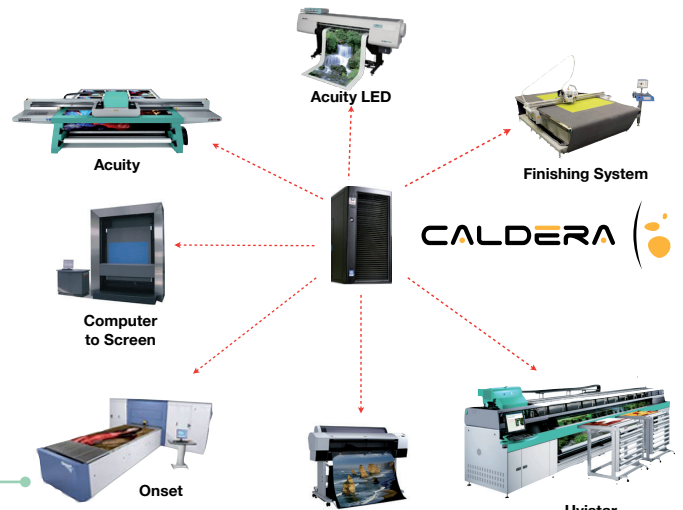
The Fujifilm edition of Caldera's Grand RIP is designed to be the center of your inkjet and screen workflow. With support for over 800 different printers, it's quite likely that it can drive every printer, and finishing system in your shop. Combine this with an easy to use interface and Fujifilm's technical expertise in color and you have a recipe for success. Perhaps most exciting is the addition of the Adobe PDF Print Engine (APPE). This allows the RIP to interpret the native PDF file to increase speed and eliminate problems with transparencies and layers. Let us show you how Fujifilm and Caldera can make a difference to the quality and consistency of the work you produce. **Let us show you how you can use one solution. From print to cut.**



Use One RIP Solution. From Print to Cut.

You don't need us to tell you what's happening in the market. But you probably do need to produce your work more efficiently. Now with the Adobe's PDF Print Engine under the hood, the Fujifilm Edition of Caldera

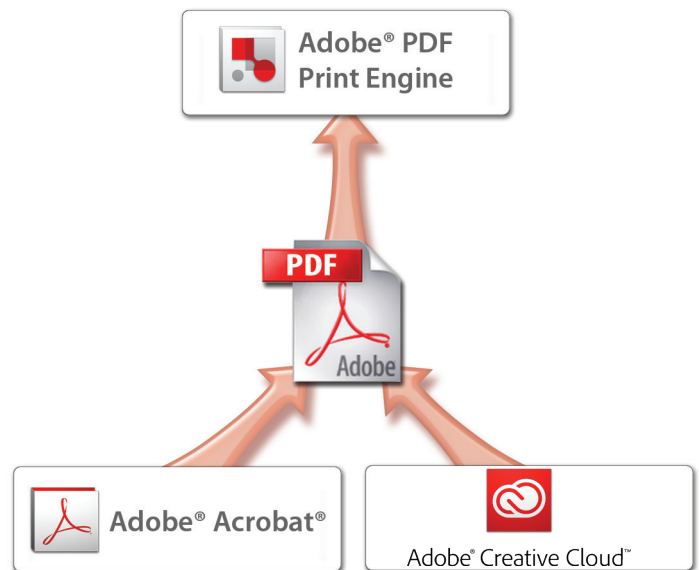
boasts trouble free, support for over 800 inkjet printers and cutters. Imagine a unified workflow where all your color is managed in one place; all of your printers are controlled by a central RIP. **Caldera is the one solution... from proof to print to cut.**



Render your files quickly and effortlessly with the PDF Print engine.

Ever wanted to be able to open a job in Acrobat or Illustrator and see the layers and transparencies and not worry at all about how it was going to run through your RIP? Tired

of flattening files or exporting EPS files to compensate for what your RIP can't understand? The Adobe PDF Print Engine changes all that. Start in PDF, stay in PDF until the job is rendered. No translation back to Postscript. **Simple. Easy. Quick. Let the PDF print engine streamline your production.**



Fujifilm Editions of Caldera

We are pleased to offer two different Fujifilm Editions of Caldera to help you find a solution that best fits your needs. The **Visual RIP** has all the basic tools you will need and lets you add things like Easy Media and the Cost Proof module later when you need them. The **Grand RIP** is more of a “power user” configuration that comes with all the modules we think you will need to produce your work. So pick the edition that best fits your needs and then add the printers and cutters to complete your configuration.

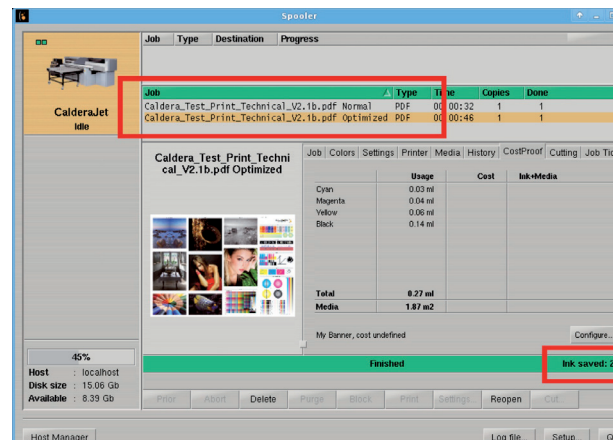


Get More From Your Ink. And Use Less.

Saving ink on press isn't a new idea or concept. There are lots of 'black box' solutions out there that add yet another PC to workflow that will cut down on your ink consumption. But what if it was right inside the

RIP? What if it looked at your job and the output profile for your printer and optimized the job right before you printed it? Ink Optimization will help you save 15–20% on your ink consumption and actually produce more consistent color.

Fujifilm lets you get more from your ink. And use less.

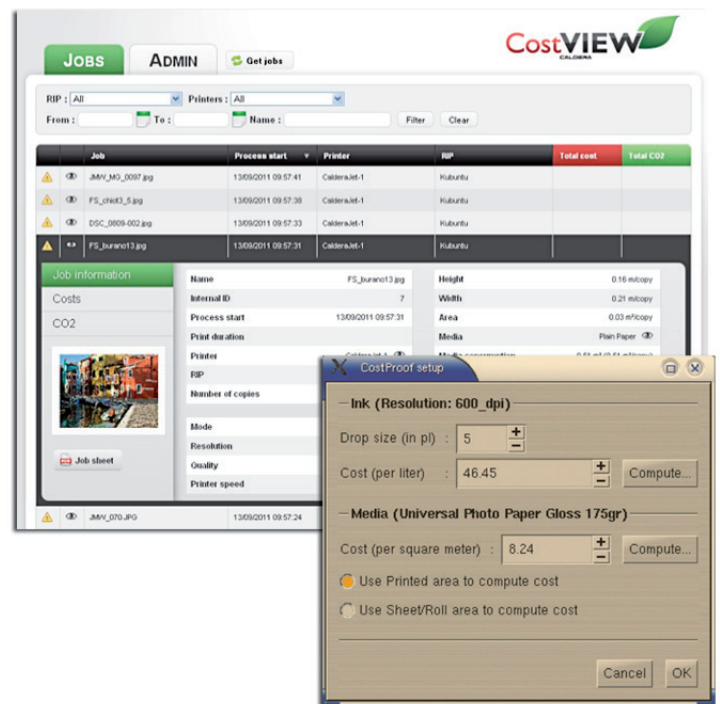


Analyze the cost of your work with CostVIEW & CostPROOF

CostProof estimates your printing costs. Enter your ink and media costs into the system and CostProof will accurately determine the quantities of each

needed for the job. The costs of the job will then be calculated before you launch the printing process. Use CostProof to monitor your costs and compare them with your sales price to see how much money you're making per job.

With CostView, any production manager can view all jobs in the spooler, monitor ink and media costs, add optional or automatic costs to each job and export the job listing with all relevant costs as a spreadsheet ready for further analysis. Its web driven interface can be accessed by any user in your company network using a simple web browser. CostView even tracks and measures the CO2 emitted by each of the elements of the job: ink, media, electricity, additional costs.



Fujifilm Editions of Caldera

Modules	Visual RIP	Grand Edition
Adobe PDF Print Engine (APPE)	x	x
Easy Media (profile creation)	x	x
Large Format Print Driver	x	optional
Grand Format Print Driver	optional	1x
Visual User	1x	1x
Cost Proof	x	x
Cost View	x	x
N-Color Module	optional	optional
Visual Cut	x	optional
Grand Cut	optional	optional
Print Standard Verifier	optional	x
Contour Nesting	x	x
Ink Optimization (by number of devices)	optional	optional
Hot Folders	unlimited	unlimited

Module Descriptions:

Adobe PDF Print Engine (APPE)

- ▶ Allows the user to create G7 alignments of supported inkjet devices according to G7 specifications and is fully integrated into the Caldera profiling process.

Easy Media

- ▶ Creates custom ICC profiles within Caldera. This allows complete color control over all print media with individually created ICC profiles.

Visual User

- ▶ Enables multiple user access to RIP & Printer resources from a Macintosh with X10 or another PC running Debian.

Large Format Print Driver

- ▶ Uses the ICC profile created by the Device Link Module to create a digital proof that emulates the output of the production device.

Grand Format Print Driver

- ▶ Allows a proofing or printer to emulate another printer controlled by Caldera.

Cost PROOF

- ▶ Extracts ink and substrate consumption and cost for each job run through Caldera. Reports can be exported as HTML or CSV for use with other applications.

Cost VIEW

- ▶ Extracts ink and substrate consumption and cost for each job run through Caldera. Reports can be exported as HTML or CSV for use with other applications.

N Color Module

- ▶ Allows a proofing or printer to emulate another printer controlled by Caldera.

VisualCut

- ▶ Allows the RIP to directly drive cut machines (physically linked to the PC or MAC) in order to control roll cutters such as Graphtec, Summa, Mimaki, Mutoh, Roland, or older Zund with the Caldera "edge sensor."

Hot Folders

- ▶ Monitored folders for automatic job processing with predefined output settings.

Grand Cut

- ▶ Extracts contour cut information from source file to drive print & cut devices like Roland, Versacamm, Mimaki FX Series, or Mutoh Ultima. Flatbed finishing solutions require an additional drivers.

Print Standard Verifier

- ▶ Verifies print conformance against industry standards (G7/requires V9.10 or higher)

Contour Nesting

- ▶ Dedicated to cut and allows you to take into account the object's real shape inside the image so the element can be optimally placed to save media.

Ink Optimization

- ▶ Saves 15% - 20% on ink usage on inkjet devices. One Ink Optimization Module is needed per active printer.

Recommended PC Requirements

1-3 printers: Core 2 Quad 2.6 ghz or faster, 4 GB RAM, 7,200 rpm SATA drives with at least 200 GB addressable storage, Hardware RAID controller, Gigabit Ethernet, Caldera Debian 1.1 x 64 operating system.

FUJIFILM