



## Onset S40i

Fujifilm proudly announces the Inca Onset S40i, the latest addition to its market-leading Inca Onset range of full-bed array wide-format UV flatbed inkjet printers. Positioned between the high productivity Onset S50i at 144 5' x 10' beds per hour and the Onset S20i at 70 beds an hour. The Onset S40i produces over 110 beds per hour.

Offering many of the features associated with the Onset range, including a wide color gamut, optional white, variable satin to gloss finish, advanced job management and automation, the Onset S40i produces superb POP-quality display graphics economically onto substrates up to 1.96" (50mm) thick.

In addition to CMYK configuration, the S40i offers an optional 6-color configuration with CMYK+LcLm as well as white. A customer can choose to configure their press with one or both of these options. The ability to vary the gloss level gives the user flexibility to set the desired gloss level on a per job basis directly from the operator console.

To ensure maximum throughput, the Inca Onset S40i is compatible with Inca's flexible automation system which offers customers the choice to operate in manual, semi or three quarter automation from the same configuration, as well as Inca's Print Run Controller (PRC) software.



**brehtaking  
quality**

Powerfully

**High Speed**

High Volume

**UV flatbed**

### Inca Onset S40i Features:

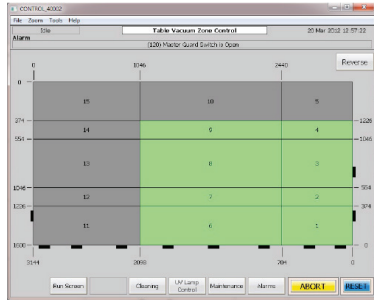
- Throughput of 112 full beds an hour
- Optional White ink
- 6-color Enhanced Color Option with Light Cyan & Light Magenta
- Variable finish from Satin to Gloss
- 3/4 Automation option
- Zoned Vacuum Bed with 15 zones
- Inca Vision to remotely monitor press performance

## UVIJET INK

The Fujifilm Uvijet family of inks offers excellent adhesion and flexibility. Uvijet inks have been developed for a wide range of media. Ideal for both indoor and outdoor applications including banners, POP, backlit images, exhibition graphics, signage, printing onto glass, metal, acrylic and board for example. These inks have been specifically formulated to maximize production output and provide a wide color gamut coupled with bright colors.

## ZONED VACUUM BED WITH 15 ZONES

The Onset S40i is the first Inca platform to offer a zoned bed. With 15 user selectable zones, the need to mask the bed is significantly reduced in order to maximize productivity and allow for faster changeovers between jobs.



New user controllable vacuum zones are controlled via the Print PC as shown above

## ONSET S40i – FOUR OR SIX COLOR

The Onset S40i four-color offers an affordable solution for fast and accurate printing for a wide range of point of sale and graphic display applications. Onset S40i six-color gives the operator the ability to enhance print quality by adding light cyan and light magenta colors. This provides even smoother color transitions of light colors and skin tones. A six-color S40i is an excellent solution for customers selling print for closer viewing distances or as an alternative to offset prints.

## ONSET S40i - WHITE OPTION

Onset S40i with white offers customers the opportunity to print a white layer under or over the CMYK content, using automatic print modes selected at the RIP. White can also be used as a spot color as part of the image. This can be configured with a 4 color S40i or a 6 color S40i. The excellent reliability of the recirculating print heads as developed by Fujifilm Dimatix makes it possible to overprint or underprint white with confidence in the finished product. In addition, with two channels of white, the opacity is impressive with just one print cycle.

## OPTIONAL 3/4 AUTOMATION SYSTEM

The optional 3/4 automation system increases the throughput of the S40i by 25-50% by minimizing handling time from 20-45 seconds manually, down to 8 seconds with automation. As a result, the S40i can produce up to 112 beds per hour with automation as opposed to up to 65 beds per hour manually (with 30 seconds handling). The pre-load table allows the operator to place and pre-register the sheet(s) while the press is printing. The pre-load table allows accurate pre-loading of 1-up full bed sheets, or 3-up 40"x60" sheets. The automation system then automatically loads from the pre-load table to the print and removes each sheet from the print bed to a finished stack on an automated scissor lift. The finished stack can be configured to long edge, short edge or recessed in ground unloader.

## SPECIFICATIONS:

### ONSET S40i

#### Print Area

- ▶ 123" x 63"  
(edge to edge printing)

#### Print Finish

- ▶ Variable, Satin to Gloss

#### Max. Substrate Thickness

- ▶ 1.96", 50mm

#### RIP

- ▶ ColorGATE Production Server (Fujifilm edition), Version 7.0 or later
- ▶ Caldera Grand RIP+ 9.0 (Fujifilm edition) or later

#### Fujifilm Uvijet UV Inks

- ▶ OB or OZ - series UV curable inks (CMYK + Light cyan and magenta)

#### Space Required

- ▶ Manual – 19' 4" (W) x 45' 3" (L)
- ▶ Short-Edge Auto – 23' 3" (W) x 54' 5" (L)
- ▶ Long-Edge Auto – 35' 1" (W) x 42' 7" (L)

#### Power

- ▶ 380-480V 3-Phase 50/60 Hz, rated to 100A

#### Factory Air requirement

- ▶ 90 PSI (6 bar)

#### Network

- ▶ 1000 Base-T

\*Product specifications are subject to change without notice.

## Beds Produced Per Hour

|                             | Auto     | Manual  |
|-----------------------------|----------|---------|
| 8 pass Bi-di Satin • Gloss  | 112 • 81 | 65 • 53 |
| 10 pass Bi-di Satin • Gloss | 90 • 69  | 57 • 48 |
| 18 pass Bi-di Satin • Gloss | 63 • 52  | 45 • 39 |

\*Handling time is 30 seconds

## Sq Ft Produced Per Hour

|                             | Auto          | Manual        |
|-----------------------------|---------------|---------------|
| 8 pass Bi-di Satin • Gloss  | 5,906 • 4,295 | 3,436 • 2,821 |
| 10 pass Bi-di Satin • Gloss | 4,725 • 3,635 | 3,000 • 2,520 |
| 18 pass Bi-di Satin • Gloss | 3,316 • 2,739 | 2,363 • 2,054 |



## THE FUJIFILM GREEN POLICY

We at Fujifilm believe that "sustainable development" of the Earth, mankind, and companies in the 21st century is an issue that must be addressed with the highest priority. As a socially responsible corporation, we actively undertake corporate activities with our environmental values in mind. We strive to be a dedicated steward of the environment and assist our customers and corporate partners in doing the same.