

## Acuity LED 1600 II UV inkjet printer

### PRODUCT BROCHURE

Large format hybrid printer driven by Fujifilm

- ▶ Excellent coverage with strong, vibrant colors
- ▶ Eight color ink set including CMYK plus light cyan, light magenta, white and clear
- ▶ Prints colors, white and clear together in one pass
- ▶ Low energy consuming, long life LEDs
- ▶ Fujifilm spot color matching software and RIP included
- ▶ Flatbed feed and receive tables

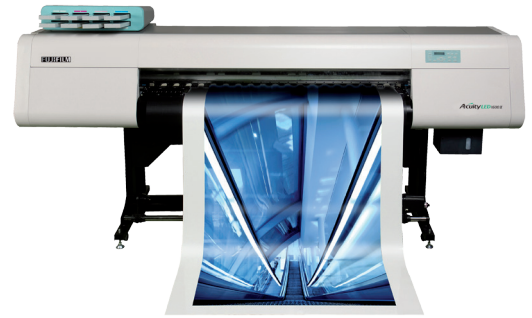


**Acuity** LED 1600 II

## High performance Fujifilm LED UV

LED UV has the capability to be a leading inkjet technology in the future. LEDs produce very little heat which means they can work with heat-sensitive media. They consume far less energy than conventional UV lamps and last up to ten times longer. Above all they are much kinder to the environment – a concern for printer operators and their customers alike.

The Fujifilm Acuity LED 1600 II is a large format hybrid printer designed to give exceptional print results in the most environmentally friendly way. Fujifilm's unique, purpose-designed ink, printheads and curing system work in perfect harmony to give smooth, near-photographic results at impressive print speeds.



### LED UV is better for your business

- ▶ High definition, accurate print with a range of finishes
- ▶ Buyers want media that is easier to recycle
- ▶ Uses a fraction of the energy of conventional curing systems
- ▶ LEDs work instantly without a warm-up delay
- ▶ LEDs are suitable for both roll and rigid applications

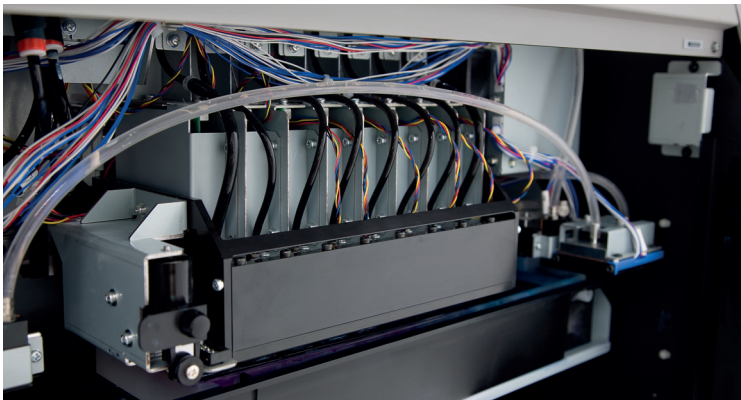
### Acuity LED is better for the environment

- ▶ Prints recyclable polyolefin films
- ▶ Long life, low energy LED UV lamps
- ▶ No volatile organic compounds (VOCs) or ozone
- ▶ No toxic metal halide lamps
- ▶ Reusable ink cartridge cases



### Fujifilm LED UV lamp system

The Acuity LED 1600 II's patented full LED lamp system is perfectly tuned to cure its own Uvijet ink in a two-stage curing process. Small, low-dose LED pinning lamps close to the printhead hold the dot in place, while the main LED curing lamps fully cure the print which is ready to use straight away. Adjustable lamp positioning enables the curing to be finely controlled.

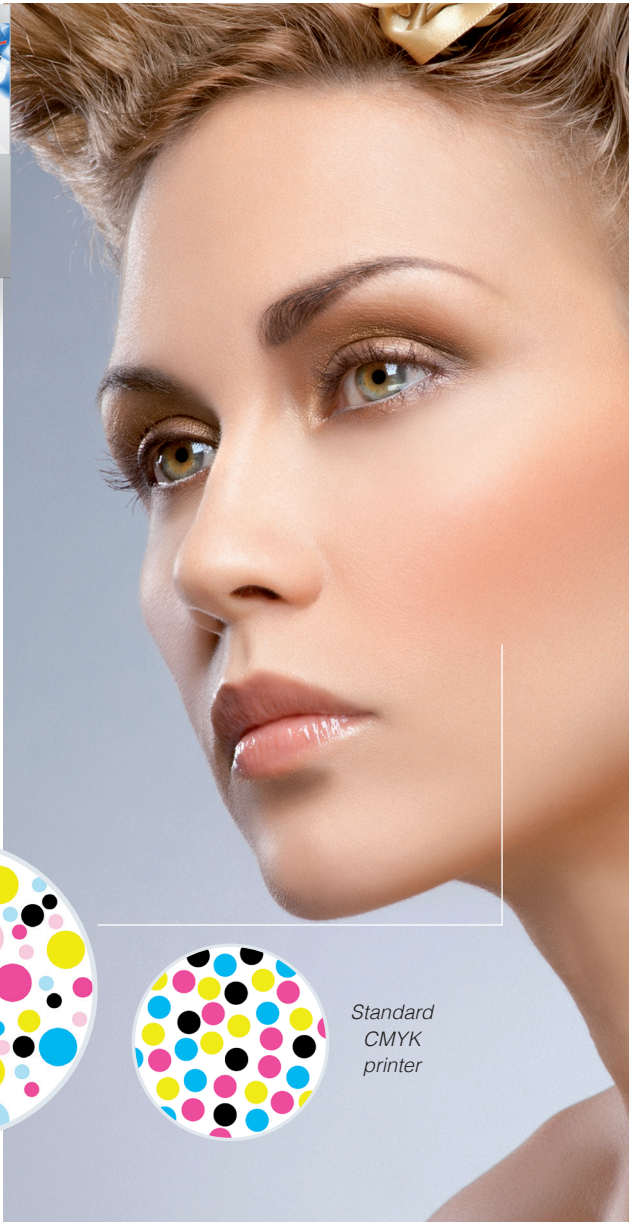


### Fujifilm Dimatix heads

The Acuity LED 1600 II uses eight Q-class printheads. These high frequency heads are both precise, fast, and have a track record of long life in high performance production. The combination of VersaDrop™ multi-pulse jetting technology and accurate control of the jetting, pinning and curing process, enables the Acuity LED 1600 II to produce quality print at fast print speeds.



# Acuity LED 1600 II



## Fujifilm Acuity LED UV printer

Although it has the most sophisticated print science behind it, the Acuity LED 1600 II is an easy-to-use, large format hybrid printer that's equally suitable for an office, studio or workshop. It is amazingly versatile and prints stunning images onto a wide range of roll or rigid media.

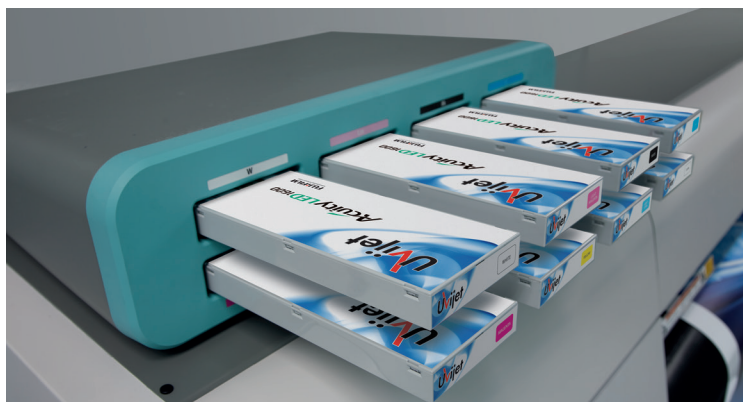
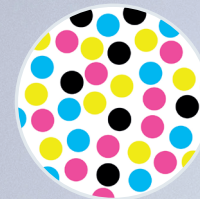
## Fujifilm VersaDrop™ imaging

VersaDrop™ multi-pulse jetting delivers droplets of different sizes according to the definition needed by the image. This gives both smooth changes in tone and rock-solid spot colors. VersaDrop™ achieves phenomenal accuracy by forming droplets at the nozzle rather than in flight to the substrate, where they can be disturbed by air turbulence above the media.

Acuity LED with 6-colors



Standard CMYK printer



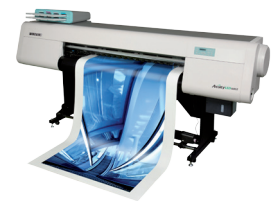
## Fujifilm Uvijet inks



Uvijet ink systems are renowned in the industry through Fujifilm's high-productivity wide format printers. Made using Fujifilm's Micro-V ultrafine dispersion technology, enabling higher pigmentation, they produce strong, vibrant images and a wide color gamut. The Acuity LED UV's dedicated eight-color UV LED ink set includes both white and clear. The Acuity LED 1600 II can apply colors, white and clear in a single pass, offering a host of creative possibilities.



Acuity LED 1600 II  
Shown with standard flatbed tables



Acuity LED 1600 II  
Shown in roll to roll mode

Specifications		
Printing technology	LED UV inkjet	
Max Media Width	63.7" (1620 mm)	
Max Print Width and Length	W: 63.3" (1610 mm) L: 656 ft (200 m)	
Max Rigid Size	40" x 60" (1016mm x 1524mm)	
Max Substrate Thickness	Roll: 0.04" (1 mm)	
	Rigid: .375" (10mm) and no more than .2mm deviation of flatness from edge to edge	
Max Rigid Weight	Up to 15 lbs (6.8 kg)	
Max Print Speed	335 ft <sup>2</sup> /hr (33 m <sup>2</sup> /hr)	
Printhead	FUJIFILM Dimatix Q-class printheads	
Fujifilm Uvijet UV inks	Fujifilm Uvijet LL LED UV curable inks	
	8 colors (cyan, magenta, yellow, black, light cyan, light magenta, white, clear)	
Physical Dimensions	Without Tables	With Tables
	128" (W) x 31" (D) x 61" (H)	128" (W) x 173" (D) x 61" (H)
	3250mm (W) x 780mm (D) x 1550mm (H)	3250mm (W) x 4380mm (D) x 1550mm (H)
Recommended Operating Space	Without Tables	With Tables
	170" x 109"	170" x 251"
Weight	Printer 617 lbs, Tables 221 lbs (Printer 280 kg, Tables 100 kg)	
Power	AC 100-120V, 200-240V, 50/60Hz	
Network	USB 2.0	

Print Modes & Speeds				
Mode	Resolution DPI	Number of Passes (Bi-Directional)	Speeds	
			ft <sup>2</sup> /hr	m <sup>2</sup> /hr
Express	600 x 300	6	355	33
Production	600 x 500	10	215	20
Standard	900 x 800	16	140	13
Quality	1200 x 1200	24	77	7.2
High Quality	1200 x 1200	48	45	4.2

[www.fujifilminkjet.com](http://www.fujifilminkjet.com)

**FUJIFILM**