



(IN FEET)
1 inch = 50 ft.

MAGNETIC



WETLANDS
PER
NJDEP
I-MAP GIS
WEBSITE

SOIL LOG 1 PERFORMED BY CARA L. SMITH, PE OF TWO RIVER ENGINEERING.
WITNESSED BY SHARON MARTENS DATED FEB. 28, 2007.

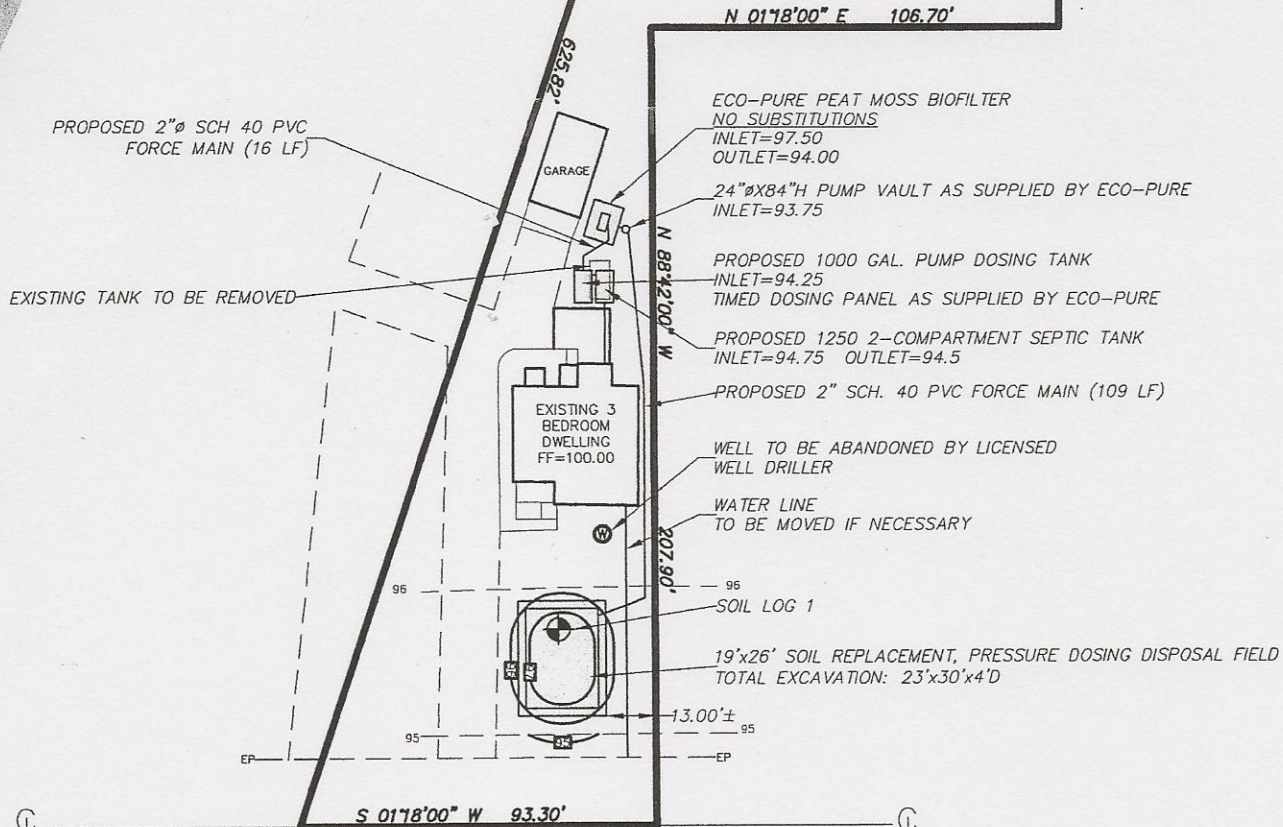
- 0-9" TOPSOIL
- 9-19" LOAMY SAND FILL
- 19-26" ORIGINAL TOPSOIL
- 26-96" LOAMY SAND, VERY PALE BROWN (10YR7/4) WITH LIGHT GRAY (10YR7/1) C.M.D. MOTTLES, FET, STRUCTURELESS.
- 96"+ CLAY LOAM, VERY DARK GRAY (2.5Y3/1), FRIABLE, MOIST, SUBANGULAR BLOCKY.

GROUNDWATER ENCOUNTERED AT 36" (ELEV=92.55)
S.H.W.T. AT 26" (ELEV=93.38)

NOTE:
THIS SYSEM DESIGN IS A REDESIGN OF A PREVIOUSLY APPROVED DESIGN BY CARA L. SMITH PE OF TWO RIVER ENGINEERING. THE PLANS WERE DATED 4-17-07, UNREVISED. THIS PLAN UTILIZES AN ADVANCED TREATMENT SYSTEM, ECO-PURE PEAT MOSS BIOFILTER AND IS DESIGNED IN ACCORDANCE WITH THE NJDEP'S GUIDANCE DOCUMENT DATED APRIL 2005.

IT IS THE INTENT OF THIS PLAN TO FURTHER IMPROVE THE WASTEWATER TREATMENT AND DISPOSAL SYSTEM SERVING THIS PROPERTY.

THIS PEAT MOSS BIOFILTER SYSTEM REQUIRES AN ANNUAL SERVICE CONTRACT FOR THE LIFE OF THE SYSTEM.



OLD BRIDGE ENLIGHTENTOWN ROAD