



SharePoint Information Architecture

Improving the Policy & Procedure
Approval Process

- Webinar will last 60 minutes
- You may submit questions to the speakers via the Question box on your screen.
- Need help? You can email sharon@earley.com
- Fill out the survey that should be in your inbox
 - Let us know what topics you are interested in, and how we can improve the series.
- Slides and recording will be available in a few days



Follow Earley & Associates:
[@earleytaxonomy](https://twitter.com/earleytaxonomy)

Hashtag: [#eawebinar](https://twitter.com/earleytaxonomy)

Speaker Bio

Worked with
SharePoint
since 2005

League of
Legends
Player

Geek for the
last 32 years

UCF
Graduate

Misses using
a C64

Made a
living as an
actor for
more than 2
years

102 Wins

2858
Takedowns



Donated hair to Locks for
Love 3 times, for each family
member that had cancer

Been on the
SharePoint
speaking
circuit since
2009

Microsoft
Certified

Walking Parody:
Code Monkey at Heart
OOB SharePoint Expert

Happily
Married w/
1 Wife
1 Daughter
1 Son

Earley & Associates Overview

What we do – Help organizations make information more findable, valuable and usable through taxonomy, metadata, information architecture



Earley & Associates | Industries & Clients

Retail



AMERICAN GREETINGS

Onlineshoes.com



BED BATH & BEYOND

QOSINA

Thousands of Stock Components



Manufacturing



CORNING

Schlumberger

Raytheon



Amway

The Coca-Cola Company

ThermoFisher
SCIENTIFIC



Earley & Associates | Industries & Clients

Pharma, Life Sciences & Healthcare

QOSINA
Thousands of Stock Components

CRICO RMF
Protecting providers.
Promoting safety.

RTI
INTERNATIONAL



My Doctor Online
The Permanente Medical Group

The Jackson Laboratory
Leading the search for tomorrow's cures

Lilly
MERCK
life technologies™

PHILIPS
sense and simplicity

Johnson & Johnson
AstraZeneca

KAISER PERMANENTE®

MayoClinicHealthSolutions.com

Bristol-Myers Squibb
Together we can prevail.®

THE DOCTORS COMPANY

Harvard Pilgrim Health Care

Abbott
A Promise for Life

ThermoFisher SCIENTIFIC

Financial Services & Insurance

Allstate. You're in good hands. **Capital Group™ Companies**

charles SCHWAB The home of American Funds®

CO-OPERATIVE INSURANCE COMPANIES

Aetna®



Vanguard®

FRANKLIN. TEMPLETON. INVESTMENTS

MassMutual FINANCIAL GROUP®

Harvard Pilgrim Health Care

ICBC

CRICO RMF Protecting providers.
Promoting safety.

GE Capital

Agenda

Introduction to
Information
Architecture

Policies and
Procedures as a
pragmatic
application for
SharePoint

Case Study review

Questions and
Answers

Like the physical universe, the digital universe is large – by 2020 containing nearly as many digital bits as there are stars in the universe. It is **doubling in size every two years**, and by 2020 the digital universe – the data we create and copy annually – will reach 44 zettabytes, or 44 trillion gigabytes.



If the Digital Universe were represented by the memory in a stack of tablets, in 2013 it would have stretched two-thirds the way to the Moon*

By 2020, there would be 6.6 stacks from the Earth to the Moon*

IDC, April 2014

Enron
Scandal

TJ Max &
Marshalls Hacked:
Tons of Credit
Card Numbers
and Phone
Numbers Stolen

WikiLeaks

Cyber Stalking

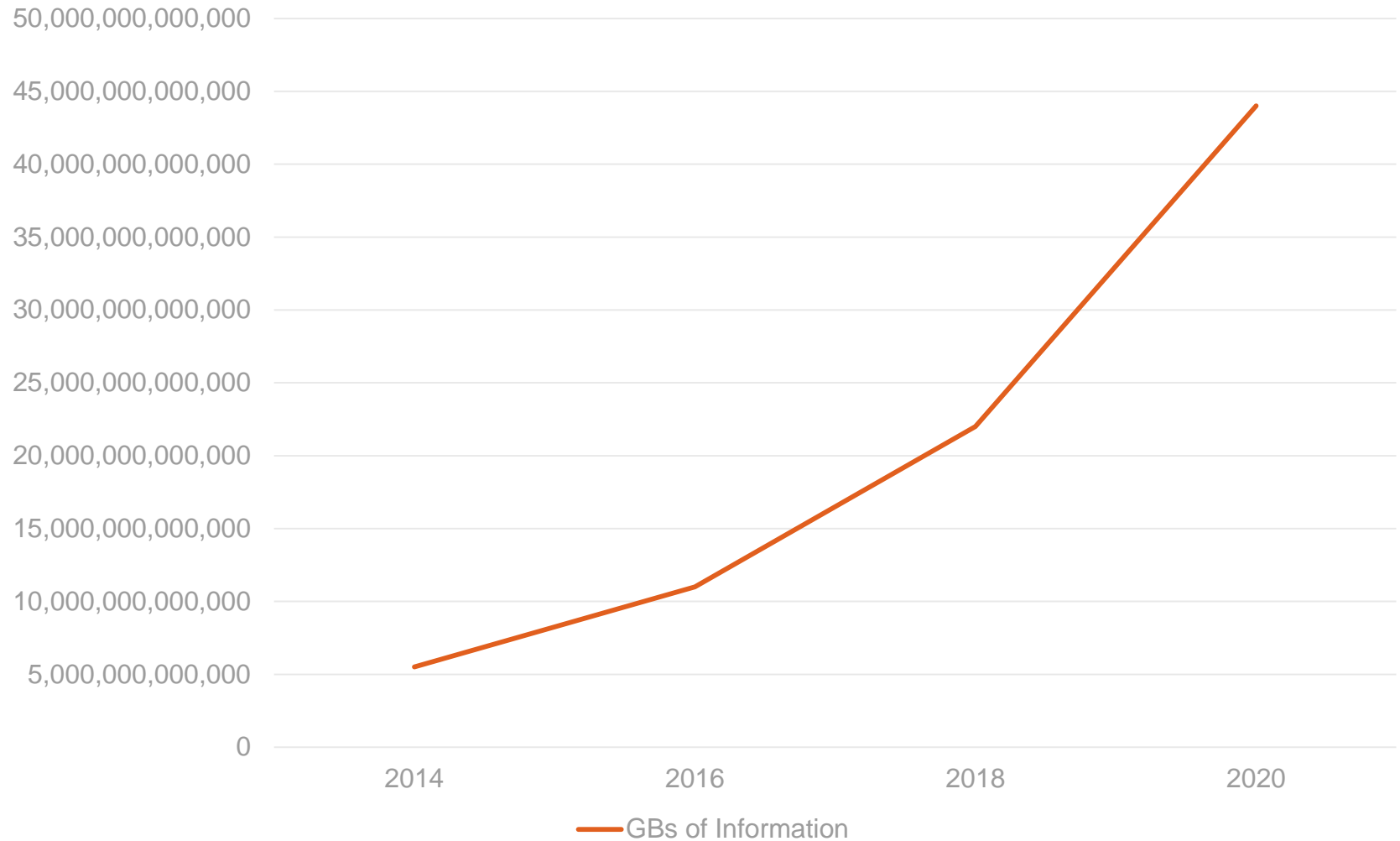
China
Hacker
Army

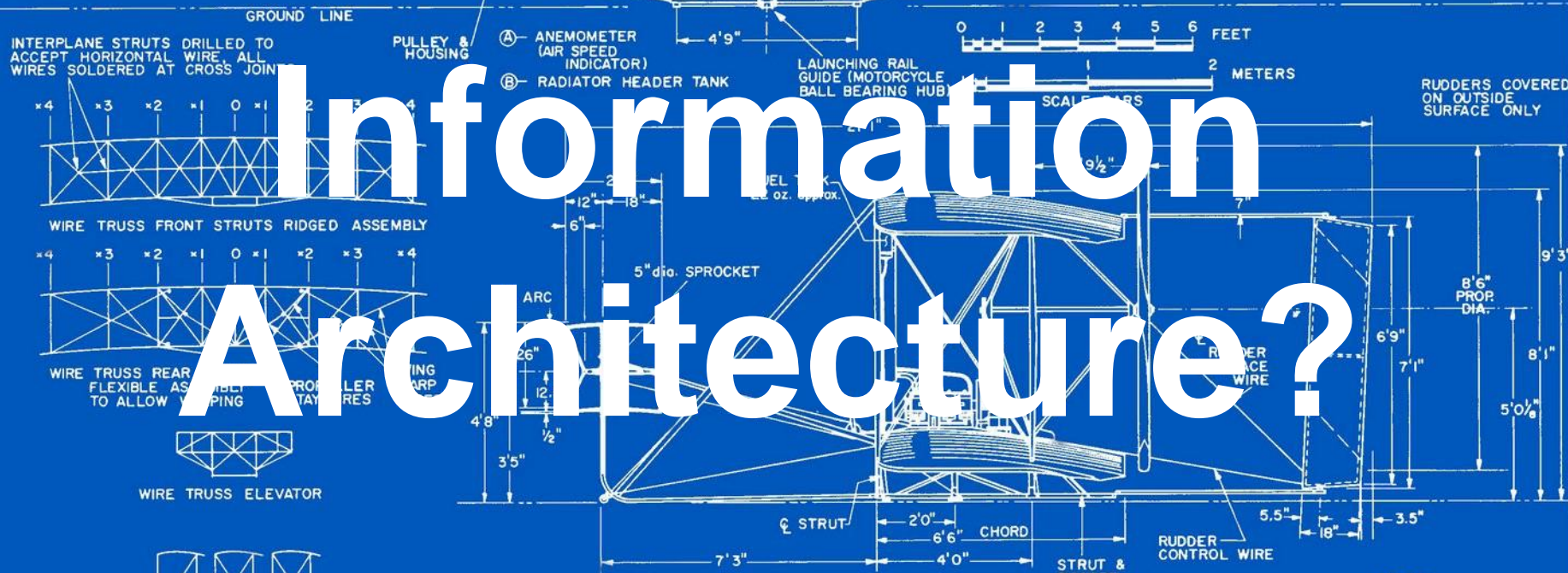
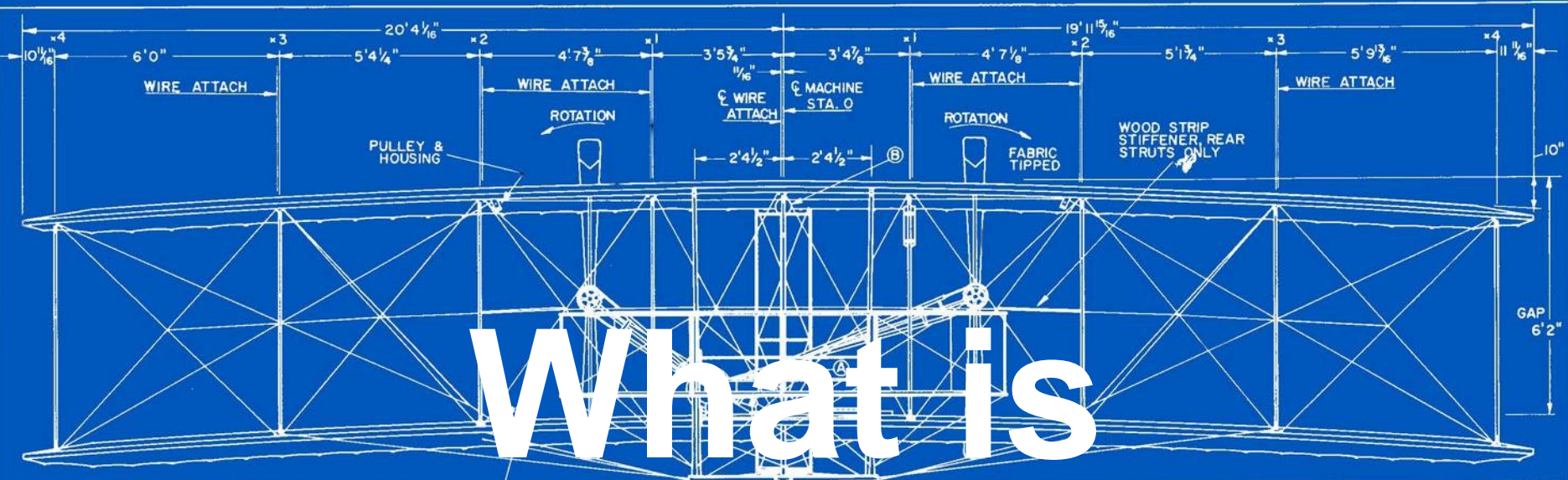
The
Washington
Post news site
was hacked
today...

Edward
Snowden:
System
Administrator

Organization	Response	Why
US 107 th Congress	Sarbanes-Oxley Act of 2002	Government reaction to multiple corporations including Enron scandal that cost investors billions of dollars.
State of Massachusetts	law (201 CMR 17.00)	Security breaches of TJX and Hannaford Markets lost personal information of scores of customers.
JCAHO	JCAHO Standards	To ensure hospitals that are JCAHO certified fall under specific guidelines to ensure quality health care
HIPAA	HIPAA electronic regulation 45 CFR Part 160 and Part 164 , Subparts A and C.	HIPAA called on the Secretary to issue security regulations regarding measures for protecting the integrity, confidentiality, and availability of e-PHI that is held or transmitted by covered entities.
PCI	PCI Standard (PCI DSS)	Response to the high levels of credit card fraud.

GBs of Information





COLORING NOTES
 FABRIC, UNBLEACHED, UNDOPE MUSLIN (OFF WHITE)
 EXPOSED ASH & SPRUCE, CLEAR VARNISHED
 ENGINE & METAL FITTINGS, FLAT BLACK
 PROPELLERS, MEDIUM GRAY

1903
 WRIGHT BROTHERS
 "FLYER"

DRAWN & RESEARCHED BY:
 HERB. KELLEY

Set of rules that determine what, and how and where, information will be collected, stored, processed, transmitted, presented, and used

On the internet, information architecture means how a website's content is organized and presented to its users to facilitate navigation and search functions.

A Foundation Problem



Communication Breakdown

- Strong organizational silo's
- Departments refer to the same content, documents, items by different names
- Use of acronyms vs. fully spelled out naming
- Need of unified language

Classification Fog

- People tag content differently
- Employees won't take time to tag content
- Employees incorrectly tag content

Findability Disconnect

- Large number of systems
- Numerous mapped drives
- Local Drives are not locked down

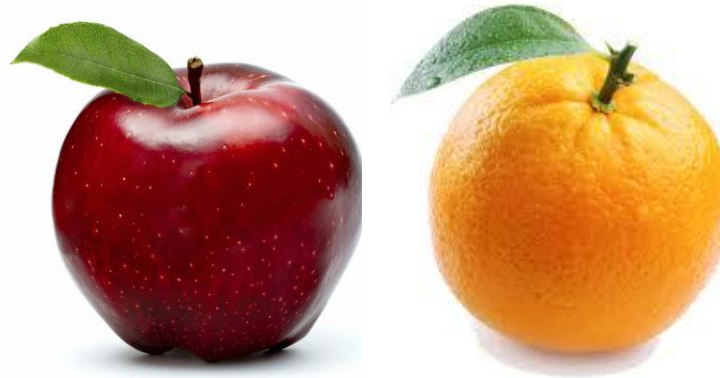
A Brief Intro to Metadata and Taxonomy

- apple
- crisp
- red, green, yellow
- Malus
- pie, sauce, cake
- peel eaten
- China (50%)
- smooth, thin skin
- hard freeze to produce
- asymmetric
- always seeded
- vitamin C



... and expands as new objects are introduced.

- apple
- crisp
- red, green, yellow
- Malus
- pie, sauce, cake
- peel eaten
- China (50%)
- smooth skin
- thin skin
- hard freeze to produce
- asymmetric
- always seeded
- vitamin C



- orange
- juicy
- orange
- Citrus
- marmalade, oil
- peel sold separately
- Brazil (18%)
- bumpy skin
- variable skin
- light freeze to produce
- near-symmetric
- seedless available
- vitamins A and C

- name
- eating experience
- colors available
- genus
- used to produce
- peel edibility
- leading producer
- skin texture
- production requirements
- symmetry
- seedless available
- vitamins contained



- name
- eating experience
- colors available
- genus
- used to produce
- peel edibility
- leading producer
- skin texture
- production requirements
- symmetry
- seedless available
- vitamins contained

FRUIT



- name
- eating experience
- colors available
- genus
- used to produce
- peel edibility
- leading producer
- skin texture
- production requirements
- symmetry
- seedless available
- vitamins contained

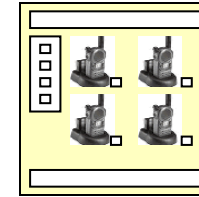
...and control those models through taxonomy.



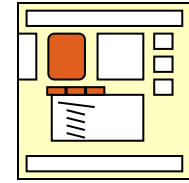
- eating experience
 - bitter
 - bland
 - crisp
 - juicy
 - sour
 - spicy
- colors
 - green
 - orange
 - red
 - yellow
- used to produce
 - jams & jellies
 - juices
 - pies & cakes
- peel edibility
 - eaten separately
 - eaten with fruit
 - inedible
- country
 - Brazil
 - China
 - United States
- texture
 - bumpy
 - fuzzy
 - rough
 - sharp
 - smooth
- production requirements
 - greenhouse
 - heavy freeze
 - light freeze
 - no freeze
- seedless available
 - no
 - yes
- vitamins
 - vitamin A
 - vitamin B
 - thiamine (B1)
 - riboflavin (B2)
 - niacin (B3)
 - vitamin C
 - vitamin D

A Successful Taxonomy Creates Value In Many Ways

- Provides a system for classification
- Allows for a means to organize documents and web content
- Helps us fine tune search tools and mechanisms
- Creates a common language for sharing concepts
- Allows for a coherent approach to integrate information sources
- Is a common language for business processes



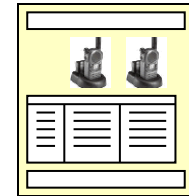
Browsing & filtering



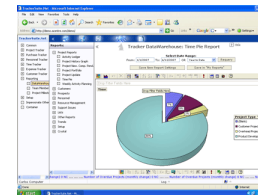
Related documents



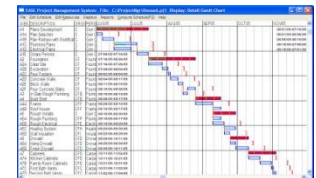
Financial reporting



Compare product



Business intelligence



Program Management

Active	Mature	Retired	Obsolete
Newest release Released in the last 12 months Full maintenance All features are supported Mainstream support All features are supported Mainstream hardware All hardware is supported Valid until The product is supported until the end of the year	Previous releases Released in the last 12 months Limited maintenance Only critical issues are supported Limited support Only critical issues are supported Limited hardware Only critical hardware is supported Valid until The product is supported until the end of the year	Discontinued Released in the last 12 months No maintenance No features are supported Extended support Only critical issues are supported Limited hardware Only critical hardware is supported Valid until The product is supported until the end of the year	Obsolete Released in the last 12 months No maintenance No features are supported Limited support Only critical issues are supported No hardware No hardware is supported Valid until The product is supported until the end of the year

Product Lifecycle
Management

Policies & Procedures Best Practices

**Lend Themselves to This
Kind of Organization and
Structure**

1. Establish standards.
2. Determine steps within the Process to be documented.
3. Who will develop, write, review?
4. Use Templates
6. Set up a vocabulary to ensure consistency of terms. (Multiple definitions for a single term can cause wreak havoc among users.)
7. Use Version Controls.
8. Set up a Taxonomy.

SharePoint has multiple out of box features that are useful for creation and maintaining P&P

- ☐ Version Control
- ☐ Multi-User collaborative environment
- ☐ Embedded workflow engine
- ☐ Term store for Enterprise taxonomy for tagging
- ☐ Content types
 - To ensure the same level of governance over every P&P
 - To ensure proper retention periods are set in place
 - To ensure proper workflows are attached to each individual P&P
- ☐ Fast Search Engine

1. Out of Box Solution or Custom

2. SharePoint WSP or direct to
production environment

3. O365 or other hosted solution

4. Depth of experience with
Enterprise solutions

5. Documentation

- Assess your P&P approval process as it currently is
- Have a clear goal in mind of where you want to take it
 - Keep with the KISS (Keep It Simple Silly) methodology

Current Process

- Create Policy
- Print policy out for approval
- Make changes if necessary
- Get physical signature
- Scan policy into a pdf
- Put policy in file share

Target Process

- Create policy collaboratively
- Trigger a workflow when ready for approval
- Use quick iterative revisions until approved
- Get digital signature
- Publish to targeted audience

- Understanding distinctions between P&P
 - Each type has a unique purpose that drives the content contained in each type of document
- Understand any and all outside influences
 - Government regulations
 - Industry standards
 - Organizational regulations
- Know who your players are in the P&P lifecycle
 - Writers / contributors
 - Gatekeeper / librarians
 - Approvers / decision makers
 - Reviewers
- Identify in detail the business lifecycle of your P&P
 - Creation process
 - Initial approval workflow
 - Retention / review schedules required
 - Review approval workflow
 - Retirement process

- A large percentage of corporations out there can utilize the out of box approval workflow
 - Allow single/multiple approvers
 - Allows both serial and parallel approval processes for multiple approvers
 - Issues tasks to approvers that can have deadlines attached
- SharePoint Designer
 - Can modify and enhance the out of box workflow
 - Build a workflow from ground up
 - Cannot build a state workflow

Case Study: BAH

Case Study review

- **Industry:** Health Care Facility
- **Driving Need:** Policies and Procedures needed to be reviewed within a specific time intervals to fall under JCAHO regulations and requirements and provide proof with an audit trail
- **Penalty Associated:** \$10,000 fine per policy out of compliance
- **Migrate Legacy System:** Previously the policies and procedures were maintained in a home grown Lotus Notes DB
- **Target Solution:** Build a Policies and Procedures Document Center in SharePoint 2010



- Introduced Policy Numbering System
 - IT-1234 (Policy)
 - IT-1234.01 (Procedure)
 - IT-1234.01.01 (Support Document)
 - Unified the addressing of a policy
- Used one layer of folder system to ensure a more granular permission set between the primary building and annex buildings for certain policies
 - IT Primary
 - IT Annex
 - IT Only
- Used the out of box approval workflow with minor additions with the use of SharePoint Designer
- Used the Information Management Policy settings to use the retention policy to ensure timely reviews of P&P
- Used major and minor versions when revisions were needed to ensure only approved policies were visible to the facilities staff
- Used additional metadata to capture the owning departments for workflow granularity

- ✓ Solution was built and released to production in less than one quarter of the time in a previous attempt with SharePoint 2007
- ✓ Increased use in comparison to the legacy system
- ✓ Improved search
- ✓ Improved user interface
- ✓ Content management was completely automated
- ✓ Solution was a success in the eyes of the senior management

Questions?



Check your inbox for our webinar evaluation survey



Let us know:

- Was this webinar interesting?
- What other topics interest you?
- How can improve?

Suggestions?? Email them to sharon@earley.com

- Linked In
 - Taxonomy CoP – <http://bit.ly/Taxonomy-CoP>
 - IA Experts - <http://bit.ly/IA-Experts>
- Yahoo
 - SharePoint IA Group:
<http://tech.groups.yahoo.com/group/SharePointIACoP/>
 - Taxonomy Group:
<http://finance.groups.yahoo.com/group/TaxoCoP>
 - Search Group: <http://tech.groups.yahoo.com/group/SearchCoP>



EARLEY & ASSOCIATES

Founded - 1994

Headquarters - Boston, MA

**We make information more
findable, useful and valuable**

Contact:

Name: David Pileggi

EARLEY & ASSOCIATES, Inc.

Email: david.pileggi@earley.com

Twitter: DavidPileggi

EARLEY & ASSOCIATESTM
IMPROVE YOUR ABILITY TO FIND CRITICAL INFORMATION

Thank you