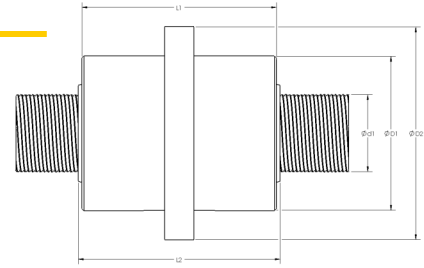


# CMC High Performance Roller Screw

- $d_1$  = Shaft OD  
 $D_1$  = Cylindrical nut OD  
 $D_2$  = Nut flange OD  
 $L_1$  = Nut length - no wipers  
 $L_2$  = Nut length - with wipers

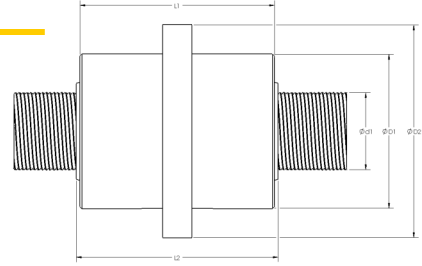


Diameter x Pitch	d1 (mm)	Efficiency	Single nut with backlash		Split nut preloaded without backlash		D1 (mm)	D2 (mm)	L1 (mm)	L2 (mm)
			C (kN)	Co (kN)	C (kN)	Co (kN)				
5x3	4.8	92.7%	5.8	11.2	3.7	5.6	19	39	31	41
8x5	8.4	92.7%	7.3	14.8	4.6	7.4	21	41	31	41
8x6	8.5	92.7%	7.4	15.1	4.7	7.5	21	41	31	41
10x5	10.8	92.6%	13.1	25.6	8.3	12.8	24	44	31	41
12x8	12.5	92.7%	22.7	44.3	14.3	22.2	26	46	44	41
15x4	15.2	90.9%	38.2	80.6	24.1	40.3	34	56	50	60
15x5	15.3	91.7%	35	73.8	22	36.9	34	56	50	60
15x8	15.5	92.7%	32.6	68.7	20.5	34.4	34	56	50	60
20x4	19.7	89.6%	77	162.5	48.5	81.3	42	64	55	65
20x5	19.8	90.8%	63.8	134.7	46.1	77.3	42	64	55	65
20x6	19.9	91.4%	71.3	150.5	44.9	75.3	42	64	55	65
20x10	20.1	92.7%	70.9	149.7	44.7	74.8	42	64	55	65
21x5	21.3	90.4%	71.3	150.5	44.9	75.2	45	68	54	64
25x4	24.2	88.2%	118.3	249.8	74.6	124.9	53	84	78	88
25x5	24.3	89.7%	112.5	237.4	70.9	118.7	53	84	78	88
25x6	24.4	90.6%	109.5	231.2	69	115.6	53	84	78	88
25x10	24.6	92.2%	108.6	229.3	68.4	114.6	53	84	78	88
30x4	30.2	86.4%	143.6	303.1	90.5	151.5	62	92	85	99
30x5	30.3	88.2%	133.6	281.99	84.2	150	62	92	85	99
30x8	30.6	91.7%	126.5	267	79.7	133.5	62	92	85	99
30x20	31.2	92.7%	129.4	273.3	81.6	136.6	62	92	85	99
36x5	36.3	86.6%	125.3	264.4	78.91	132.2	74	110	80	94
39x5	39.3	86.1%	170.8	360.5	107.6	180.3	80	116	100	114
39x10	39.6	90.8%	160.9	339.7	101.4	169.9	80	116	100	114
39x25	40.5	92.7%	207	437	130.4	218.5	80	116	100	114
48x5	48.3	84.5%	258.9	546.6	163.1	273.3	100	150	127	141
48x8	48.5	88.2%	237.8	501.9	149.8	251	100	150	127	141
48x10	48.6	89.7%	221	466.6	139.2	233.3	100	150	127	141
48x18	49.1	92.0%	267.8	565.3	168.7	282.6	100	150	127	141

NOTE: This is a sampling of sizes only. If you do not see the size you need on this table (continued on following page), contact CMC Sales Engineering for assistance.

# CMC High Performance Roller Screw

- $d_1$  = Shaft OD  
 $D_1$  = Cylindrical nut OD  
 $D_2$  = Nut flange OD  
 $L_1$  = Nut length - no wipers  
 $L_2$  = Nut length - with wipers



Diameter x Pitch	d1 (mm)	Efficiency	Single nut with backlash		Split nut preloaded without backlash		D1 (mm)	D2 (mm)	L1 (mm)	L2 (mm)
			C (kN)	Co (kN)	C (kN)	Co (kN)				
<b>48x24</b>	49.4	92.70%	300.8	365.00	189.5	317.5	100	150	127	141
<b>60x15</b>	60.9	90.60%	448.7	947.30	282.7	473.6	122	162	166	180
<b>60x20</b>	61.2	91.70%	489.9	1,034.10	308.6	517.1	122	162	166	180
<b>60x25</b>	61.5	92.20%	523.1	1,104.30	329.6	552.2	122	162	166	180
<b>60x30</b>	61.8	92.70%	543.3	1,147.00	342.3	573.5	122	162	166	180
<b>64x6</b>	64.4	85.00%	487.3	1,054.70	307	527.4	115	180	129	147
<b>64x7</b>	64.4	91.10%	428.4	927.10	269.9	463.6	115	180	129	147
<b>64x10</b>	64.5	87.50%	402.2	870.40	253.4	435.2	115	180	129	147
<b>64x18</b>	64.9	91.10%	432	935.00	272.2	467.5	115	180	129	147
<b>64x24</b>	65.2	92.00%	468.7	1,014.50	295.3	507.2	115	180	129	147
<b>64x36</b>	65.8	92.70%	477.3	1,033.10	300.7	516.6	115	180	129	147
<b>75x10</b>	75.6	86.40%	663.5	1,400.60	417.9	700.3	150	210	191	209
<b>75x20</b>	76.2	90.90%	754.7	1,593.20	475.5	475.5	150	195	191	209
<b>80x6</b>	80.3	80.70%	834	1,805.10	525.4	902.5	138	180	156	174
<b>80x18</b>	80.9	90.10%	729.2	1,578.20	459.4	789.1	138	180	156	174
<b>80x24</b>	81.2	91.30%	772.9	1,672.70	486.9	836.4	138	180	156	174
<b>80x36</b>	81.8	92.40%	813.1	1,759.80	512.3	879.9	138	180	156	174
<b>100x15</b>	99.9	87.30%	1,392.70	2,940.00	877.4	1,470.00	200	245	260	281
<b>100x20</b>	100.2	89.50%	1,427.90	3,014.30	899.6	1,507.10	200	245	260	281
<b>100x25</b>	100.5	90.70%	1,443.60	3,047.40	909.5	1,523.70	200	245	260	281
<b>100x35</b>	101.1	91.80%	1,377.20	2,907.30	867.7	1,453.70	200	245	260	281
<b>100x40</b>	101.4	92.20%	1,170.50	2,470.80	737.4	1,235.40	200	245	260	281
<b>100x50</b>	102	92.70%	896.50	1,892.40	564.8	946.20	200	245	260	281
<b>120x20</b>	121.2	88.20%	1,654.70	5,484.90	1042.4	2,742.50	240	300	280	301
<b>150x15</b>	150.9	84.20%	2,706.60	5,777.20	1,705.20	2,888.60	320	385	400	437
<b>150x20</b>	151.2	86.40%	2,755.30	5,816.30	1,735.80	2,908.10	320	385	400	437
<b>150x25</b>	151.5	88.20%	2,738.10	5,780.10	1,725.00	2,890.00	320	385	400	437
<b>150x30</b>	151.8	89.50%	2,664.40	5,624.40	1,678.50	2,812.20	320	385	400	437

NOTE: This is a sampling of sizes only. If you do not see the size you need on this table (continued on previous page), contact CMC Sales Engineering for assistance.

CMC: CREATIVE SOLUTIONS TO AUTOMATION CHALLENGES



We believe the information contained in this publication is accurate, but no liability can be accepted for any loss or damage whether direct, indirect or consequential arising out of the use of the information contained herein. Not approved for manned flight-critical applications without CMC consent.