



Making Precision Decisions in the era of BIG DATA.

FBS 2013 User Conference

What's New, Upcoming and Unexpected...



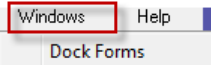
VERSION 10.3 /8.14

Norm Brown

Two Versions. One Future.

	Version 8.14	Version 10.3
Language	VB 6.0	.NET 2010
Recommended computer	Any Window 98 or later computer	Windows 7 or 8 2.5 Ghz, 4GB RAM (8 GB recommended)
64-Bit mode	Runs in WOW-64, 32-Bit emulation	Either 32-bit or full 64-bit mode Can address 64-bit memory
Performance	Best performance for 32-bit computers	2-3 X faster on 64-bit computers with adequate memory
Database options	Microsoft Access 3.51	Microsoft Access 4.0, but can connect with SQL, Oracle, ODBC databases
Support/Updates	Supported with maintenance patches and limited updates through 6/30/14	Supported and new features and updates through 6/30/14
Modules available	All FBS modules	All FBS modules except LifeCycle Budget

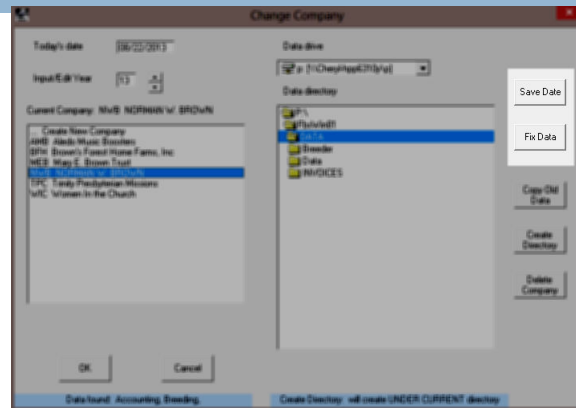
Dock Forms



The screenshot displays the software's docked forms interface. At the top, there are menu options for 'Windows' and 'Help', and a 'Dock Forms' button. Below this, several forms are docked:

- (BFH12) Edit Cost/Profit Centers:** A table with columns: Number, Description, Active, Type, Crop Unit, Crop Year, Livest Unit, Int Id. It lists items like 'Corn Inventory', 'Soybean Inventory', 'Lett's Corn', 'Lett's Beans', 'Smith Corn', 'Smith Beans', 'Hay', and 'Truss'.
- (BFH12) Ledger Account Summary:** A table with columns: Acct, Acct Desc, Actual Amount, Budget Amount, % of Budget, Variance, Actual Unit Price, Budget Unit Price. It lists accounts like 'Crop/Feed Sales', 'Hog Sales', 'Carcass Premium', 'Live Slaughter', 'Dead On Arrival', 'Sub Standard Hogs', and 'Swt Loss'.
- (BFH12) Add A/P Entry:** A form with fields for Bank Account, Invoice Number (80), Date (08/25/2012), Total Amount (0), and Amt. to Balance (0.00). It also has a 'Line' table with columns: Line, Acct, Con, Div, Amount, Description, Quantity.
- (BFH12) TA+ Data Import/Export:** A form with options for Import/report option, Type of file, Import/report file location, and Import/report file name. It also has fields for Beginning date, Ending date, Ledger range, Center range, and Division range.

File Selection Screen



- Added **Save** and **Fix Data** buttons in startup in case files are corrupted

Preferences—TA+ Data Entry

Set Preferences	
Description	Value
TA+ CCA Unit Account	

- TA+ CCA Unit Account
 - Allows user to enter units produced for CCA report for items not in Smart Feeder or Crop Audit
 - Post Adjustment entry for zero dollars

Description	Value
TA+ Input Options	NNYNYNY

- Duplicate Entry **Number/blank entry** warning override

Preferences—Inventory Values

Set Preferences	
Description	Value
OPT: Valuation Logic	2

- OPT: Valuation Logic
 - Controls logic of material application valuation routine (crop/feeding reports/SFIV/CAIV)
 - Default = 1 (look for purchases in next month)
 - New = 2 (stop ending date for report, don't look at next month for SFIV, CAIV)

Multi-Company Preferences

Set Preferences	
Description	Value
CM: Push Centers	CAH,HMC
CM: Push Ledger Accounts	RDW,HMC,PTR,HOL,CAH,LSB,COH

- Increased file limit in push Ledger Accounts and center from 10 to 20 company files

Contract Module

Detail						Recap by Contract		
Description	Cont. Quan.	Cont. Value	Del. Quan.	Del. Value	Cont. Price	Del. Price	Balance	Commodity
CH13001 March 13 corn contract	100,000.00	778,240.00	100,000.00	23,012.50	7.78	0.23	0.00	Feed
CH13002 March 13 corn contract	30,000.00	175,026.00	30,000.00	54,900.00	5.83	1.83	0.00	Feed
CH13003 March 13 corn contract	100,000.00	583,500.00	100,000.00	164,200.00	5.84	1.64	0.00	Feed
CH13004 March 13 corn contract	70,000.00	454,160.00	70,000.00	74,212.50	6.49	1.06	0.00	Feed
CH13005 March 13 corn contract	255,000.00	1,496,850.00	0.00	0.00	5.87	0.00	255,000.00	Feed

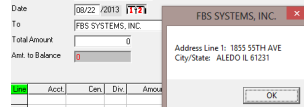
- Added **contract description** to recap by Contract on Contract Report

TransAction Plus Credit Cards Setup

- Added Credit Card Vendors
- “Actual Vendor” stored in Long Description

TransAction Plus Input/Edit

- Increased Description list from 3,000 to 5,000



- Press F11 to display Vendor address



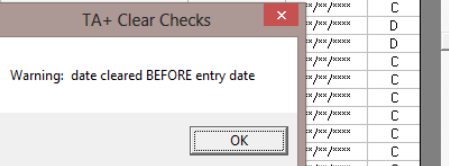
- Reversing Entries identified when printing



- Toggle scanner from Input Screen

TransAction Plus Check Clearing

Number	Date	Vendor	Amount	Date Cleared	Type
6524	07/24/2013	RLI	125.00	07/02/2013	C
6525	07/24/2013				C
6135	07/25/2013				D
6136	07/25/2013				D
6533	07/25/2013				C
6534	07/25/2013				C
6537	07/29/2013				C
6538	07/29/2013				C
6539	07/29/2013				C
6540	07/29/2013				C
6541	07/29/2013				C



- Added warning if Date Cleared < Entry Date


TransAction Plus Check/Invoice Printing


- New check Detail lines
 - 51 = Date | Invoice # | Description
 - 52 = Invoice # | Ledger | Amount
 - 53 = Date | Invoice # | PO # | Ledger | Amount
 - 57 = Totally user-defined (like 59) but loads original invoice
 - 58 = Similar to line 30 except if paying an A/P entry displays Invoice # and Amount


AP/AR Reports


Print for selected vendors

Type of report

Beginning date 

Ending date 

Recap by ledger account 

Recap by vendor 

Exclude payments after period

Print Actual Credit Vendor

(NWB13) A/P Detail Report

Edit	Invoice	Date	Vendor	Description	Acct.	Cen.	Div.	Due Date	Amount
	D0129131	01/29/2013	DISCOVER CARD	NETFLIX	914	91	1	03/21/2013	7.99
	D022813	02/28/2013	DISCOVER CARD	NETFLIX	914	91	1	04/21/2013	7.99
	D0329131	03/29/2013	DISCOVER CARD	NETFLIX	914	91	1	05/21/2013	7.99
	D042913	04/29/2013	DISCOVER CARD	NETFLIX	914	91	1	06/21/2013	7.99

- Can include Actual Vendor in A/P Detail Reports
- Trap payments with wrong sign in Invoices with Payment reports

Crop Audit Project Transfer

(AF112) Input Crop Project Transfer	
Date	08/23/2012
Source:	
Center	P0113 CORN 2013
Project	114 CORN 2013/High 70
Field	114 High 70 Acres
Destination:	
Center	P0012 SILAGE 2012
Project	114 CORN 2012/High 70
Field	114 High 70 Acres
Acres	35.40
Comment	Switch to silage

- Used for harvesting a different crop center than originally planted (in same field)
 - ▣ Examples: silage, identity-preserved crop
 - ▣ E.CLIPSE only (transfers costs by acres/project acres)

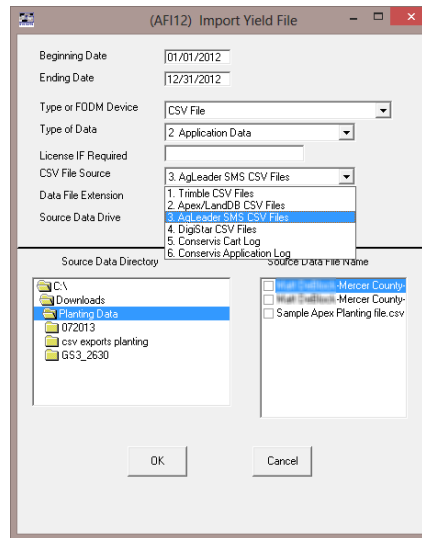
Crop Audit Data Doctor Projects

(BFH13) Change Crop Projects						
Row	Center	Project	Field	Center	Project	Field
1	132 13 Beans	1 13 Beans / Home Bc		1 131 13 Corn	1 13 Corn / Home Bott	1
2	131 13 Corn					
3						
4						
5						

- For switching crop centers after costs have been incurred (i.e. Fall fertilizer)
 - ▣ Example: switching from corn to soybeans
 - ▣ E.CLIPSE only
 - ▣ Can batch multiple projects in one entry
 - ▣ Need to roll center balances into new year

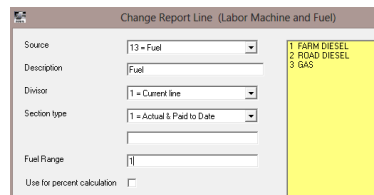
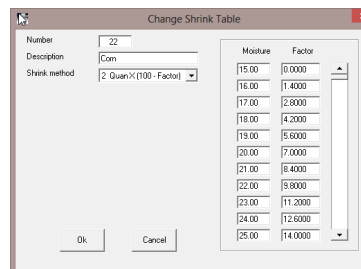
Crop Audit MACH 2.0 Interface

- Updated SMS CSV import routines for:
 - Planting
 - Tank mixes
- Handles multiple-line Conservis entries



Crop Audit General

- Modified Shrink Table to default to standard shrink if Shrink Factor = 0
- Implemented fuel used in Cost Analysis



Smart Feeder General

- Drugs/Medication entry no longer forces in Dosage/Number of Head

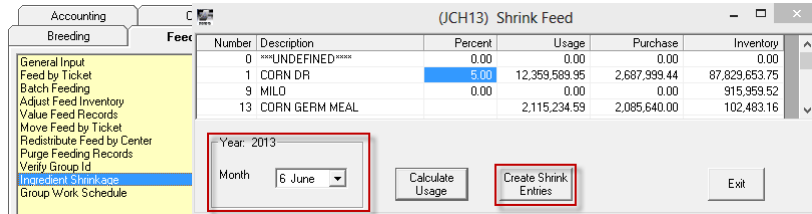
Line	1
Entry Type	Drugs/Medication
Date	02/01 /2013
Con.	Weight Labels w/ # of Heads
Group	201237B
Build	501
Group	201237
Drug	300 LINCOMX 300
Number	0
Ave Wt	0.00
Dosage	3.00
Quantity	3.00
Value	0.00

Smart Feeder Batch Feeding

- New **Batch Feeding Report**
 - Displays “finished feed” (unfed) inventories
 - By Ingredient
 - By Ration
 - “Point in time” report
 - Can export to Excel

Ing	Description	Weight	Ration	Description	Weight
1	CORN DR	755,388.00	205000	GEST	45,285.00
13	CORN GERM MEAL	201,486.00	250200	Lsc: 5.0 g/10	102,053.60
30	WHEAT SRW	641,776.00	270000	GD10 L5	4,671.00
54	DDGS	129,775.00	501000	FH1	456,259.92
90	FAT	133,659.72	504360	FH4 D7 G8 M5 W30	276,531.68
101	SOYBEAN MEAL	311,951.00	505000	FH5	931,718.78
200	WHEAT MIDDS	111,011.00	505368	FH5 D7 G8 M5 W5 DEN	143,993.00
301	THREONINE	3,048.90	507000	FH7	428,135.20
302	LYSINE 50%	17,626.30	508000	FH9	150,029.99
308	MHA	945.90			
318	PHYTASE-RONDOZYME	738.50		Ration Totals	2,557,775.17
335	ADIFLOW	75.00			
400	LIMESTONE	24,861.00			
410	PHOSPHATE DEFLOURINA	8,096.00			
415	SALT	11,943.90			
420	DYNAMATE	1,126.80			
428	IRON OXIDE	163.00			
436	SELENIUM PKK, 06%	236.60			
456	TM 1.75	1,891.40			
533	S/P/VIT 1.5	121.15			
536	G/F 1.5 VIT PK	1,413.15			
575	CHOLINE CHLORIDE 60%	122.80			
649	DENAGARD	252.00			
662	STAFAC 20	380.75			
	Ing Totals	2,557,775.17			

Smart Feeder Ingredient Shrinkage

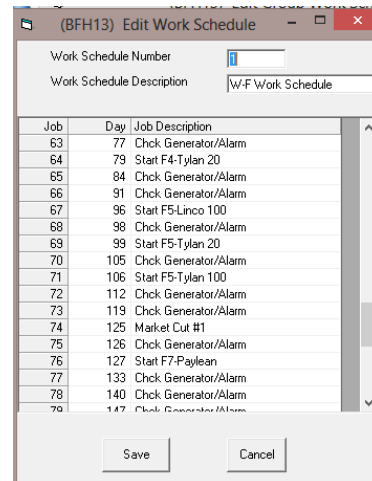


- New menu option
 - Applies shrink factor by month
 - Creates SF Feed Purchase entry
 - Adjusts Quantity, not \$
 - Changes unit price for feed fed

Line	1
Entry Type	Buy Ingredient
Date	06/01/2013
Ingredient	1 CORN DR
Quantity	-11,616.16
\$/Bu	0.00
Value	0.00

SF Group Work Schedule

- New module
- Set up jobs by days on feed



SF Group Work Schedule

- Desktop input screen
- Click to complete tasks

Center/Group	Date	Job	Completed	Inventory
201331W Lafever W-F 3	08/01/13	Temp @ 83.0		2,432
201331W T830	08/01/13	Neomycin	Completed	2,432
201331W ANED	08/01/13	Gengard	Completed	2,432
201331W AGEN	08/05/13	Start UIC3	Completed	2,432
201331W FU30	08/07/13	Temp @ 82.5	Completed	2,432
201331W T825	08/07/13	Chck Generator/Alarm	Completed	2,432
201331W GENA	08/08/13	Temp @ 82.0	Completed	2,432
201331W T820	08/09/13	Temp @ 81.5		2,432
201331W T815	08/10/13	Order UC4		2,432
201331W OUC4	08/10/13	Temp @ 81.0		2,432
201331W T810	08/11/13	Temp @ 80.5		2,432
201331W T805	08/12/13	Temp @ 80.0		2,432
201331W T800	08/13/13	Temp @ 79.5		2,432
201331W T795	08/14/13	Temp @ 79.0		2,432
201331W T790	08/14/13	Chck Generator/Alarm		2,432
201331W GENA	08/15/13	Bump up Min. Vent.		2,432
201331W VEN1	08/15/13	Temp @ 78.5		2,432
201331W T785	08/16/13	Temp @ 78.0		2,432
201331W T780	08/17/13	Order UC5		2,432
201331W OUC5	08/17/13	Temp @ 77.5		2,432
201331W T775	08/18/13	Temp @ 77.0		2,432
201331W T770	08/19/13	Temp @ 76.5		2,432
201331W T765	08/20/13	Temp @ 76.0		2,432
201331W T760	08/21/13	Booster Vaccine		2,432

Schedule Parameters:
 Date: 08/23/2013
 Center Range: 0-zzzzzz
 Refresh Save Changes

SF Group Work Schedule

Center	Group	Date	Job	Completed	Inventory
547 Brandon Lafever W-F	201331W Lafever W-F 31	08/01/2013	Temp @ 83.0		2,432
547 Brandon Lafever W-F	201331W Lafever W-F 31	08/01/2013	Neomycin		2,432
547 Brandon Lafever W-F	201331W Lafever W-F 31	08/01/2013	Gengard		2,432
547 Brandon Lafever W-F	201331W Lafever W-F 31	08/05/2013	Start UIC3		2,432
547 Brandon Lafever W-F	201331W Lafever W-F 31	08/07/2013	Temp @ 82.5		2,432
547 Brandon Lafever W-F	201331W Lafever W-F 31	08/07/2013	Chck Generator/Alarm		2,432
547 Brandon Lafever W-F	201331W Lafever W-F 31	08/08/2013	Temp @ 82.0		2,432
547 Brandon Lafever W-F	201331W Lafever W-F 31	08/09/2013	Temp @ 81.5		2,432
547 Brandon Lafever W-F	201331W Lafever W-F 31	08/10/2013	Order UC4		2,432
547 Brandon Lafever W-F	201331W Lafever W-F 31	08/10/2013	Temp @ 81.0		2,432
547 Brandon Lafever W-F	201331W Lafever W-F 31	08/11/2013	Temp @ 80.5		2,432
547 Brandon Lafever W-F	201331W Lafever W-F 31	08/12/2013	Temp @ 80.0		2,432
547 Brandon Lafever W-F	201331W Lafever W-F 31	08/13/2013	Temp @ 79.5		2,432

Lines to print: 1 - 712
 Last detail column to print: Inventory
 Close Print Range Printer Setup Export

- Example of Work Schedule Report

SF Group Work Schedule

- Remote input screen
- Optimized for mobile devices
- Pre-select Center then click on Completed column

Center/Group/Date	Job	Completed	Inventory
201331W Lavever W/F 3			
08/01/13	Temp @ 83.0	Completed	2.432
08/01/13	Neomycin	Completed	2.432
08/01/13	Gengard	Completed	2.432
08/05/13	Start UC3	Completed	2.432
08/07/13	Temp @ 82.5	Completed	2.432
08/07/13	Chck Generator/Alarm	Completed	2.432
08/08/13	Temp @ 82.0	Completed	2.432
08/09/13	Temp @ 81.5	Completed	2.432
08/10/13	Order UC4	Completed	2.432
08/10/13	Temp @ 81.0	Completed	2.432
08/11/13	Temp @ 80.5	Completed	2.432
08/12/13	Temp @ 80.0	Completed	2.432
08/13/13	Temp @ 79.5	Completed	2.432
08/14/13	Temp @ 79.0	Completed	2.432
08/14/13	Chck Generator/Alarm	Completed	2.432
08/15/13	Bump up Min. Vent.	Completed	2.432
08/15/13	Temp @ 78.5	Completed	2.432
08/16/13	Temp @ 78.0	Completed	2.432
08/17/13	Order UC5	Completed	2.432
08/17/13	Temp @ 77.5	Completed	2.432
08/18/13	Temp @ 77.0	Completed	2.432
08/19/13	Temp @ 76.5	Completed	2.432
08/20/13	Temp @ 76.0	Completed	2.432

SF Group Work Schedule

- Remote input Ad Hoc event entry screen

(BFH13) Smart Feeder Remote Company: Brown's Forest Home Farms, Inc

Date	08/23/2013	Build	547 LAFEVER TUNNEL
Center	547 Brandon Lavever W-F	Group	201331
Group	201331W 547 Lavever W-F :		

Entry Type	0 Death Loss
Cause	1 EUTHANIZED
Number of Head	2
Ave. Weight	20.00
Total Weight	40.00
\$/Unit	0.0000
Value	0.00

Backup
Advance

Save

Reports
Work Schedule

Change File/Project

Exit

Packer Interface

- Added **Hormel** Carcass Grade
- Added new traits, trucking and check-off to **Triumph** interface
- Coming: **Smithfield!**
 - Farmland
 - John Morrell
 - Smithfield

Commercial Feed Mill Interface

- Added **Heartland Coop**
- Added **Advance Sales Analysis**
- Added **Quickbooks by pounds**

(BFH13) Transfer Data from Commercial Feed Mill

Type of feed mill file: 3 Feed Mill Manager EDI

Mill data file location: L WEM Batching Transactions
M Feed Office Pro
N AgVantage
O WFS Alone
P QuickBooks Invoice
Q QuickBooks (Pounds)
R Heartland Coop
S Advance Sales Analysis

Mill data file: [empty]

Mill header file (if used): [empty]

Beginning transfer date: [empty]

Ending transfer date: 11/27/2013

Feed Mill (vendor): RIVER VALLEY COOPERATIVE

Feed entry division: 5 PORK DIVISION

Type of entry to save: A/P purchase entry

Journal offset account: 120 Feed Inventory

Feed Mill Mgr. Location Field: 2 Group Code

Feed Purchase Accounts: 541 Feed Buy & Dispense

Feed Sale Accounts: 300 Crop/Feed Sales

Grind/Mix/Deliver: 543 Grind/Mix/Deliver

Discount: 300 Crop/Feed Sales

Delivery charge: 300 Crop/Feed Sales

Mill Location Map

Mill Ration Map

Mill Ingredient Map

Search for Mill Data File

Transfer Data

Exit

Options:

- Delete mill file when finished
- Check for previously entered
- Create transfer report
- IF sale update inventory
- Include customer number in location
- Use Feed Mill Manager group id
- Use Feed Mill Manager date posted
- Save Entries in Smart Feeder
- Disable guaranteed rations
- Multiple bin locations, same ticket
- Use ingredient description

Commercial Feed Mill Interface

- ❑ Added contracts to Feed Mill Manager
- ❑ Modifications to AgVantage and Graymont Coop
- ❑ Changed JE entry from Cash to Management
- ❑ Modified Sudenga to pick up Grind & Mix
- ❑ Feed Sales
 - ❑ Added Center to Sales entry to override Location Map
 - ❑ Added check that feed Sale is saved as unlinked entry if ledger account isn't linked

Invoice Feed Module

- ❑ Added **Delivery Costs**
- ❑ Assign fixed amount per Center

(JCH13) Generate Invoices from Feeding Records

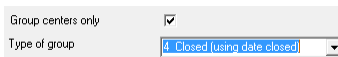
Beginning date: 01/01/2013
 Ending date: 12/31/2013
 Invoice date: 08/23/2013
 First invoice number: 1201
 Invoice division: [dropdown]
 Income account for feed sales: 305000 SALES FIN FEED
 Income account for processing: 307000 MILLING REVENUE
 Income account for delivery: 388000 OTHER REVE-CP
 Liability account for sales tax: 300050 MISC. SALES
 Source GMD Center: 90 FEED MILL
 Feed pricing method: 3 From Budget Price
 Feed processing charge/ton: 12.00
 Margin markup percentage: 0.00
 Margin markup percentage #2: 0.00
 Ingredients using margin #2: [dropdown]
 Sales tax rate (percentage): 0.00
 Feeding center range: [DBCH]SOURB????6????????
 Update this company: [dropdown]

(JCH13) Delivery Charge by Center

Row	Center	Amount
1	7CLS COX 90	220.00
2	7CAN CANNING 96	250.00
3	7BRA BRADY 78	180.00
4	7SOU SOUTHERLAND 38	175.00
5	1000 feed sales	0.00

Smart Feeder Reports

- Inventory Report
 - Displays ADG to 3 decimal places
 - Export includes Center/Location
- Ingredient Summary can exclude Buy & Dispense



Group centers only

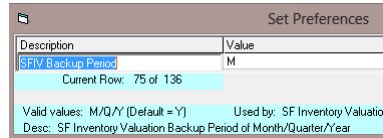
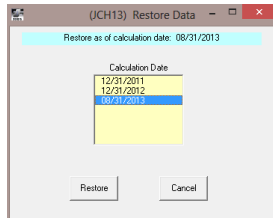
Type of group 4 Closed (using date closed)

- Input History can now restrict by Group
- Added multi-farm option to Input History, Feed Budget and SFUD reports

Smart Feeder User Defined Report

- New line type and logic
 - 28 Calculate | 05 Divide (4 decimals)
 - Changed Calculate Add/Subtract math so can work with dates

SF Inventory Valuation (E.CLIPSE)



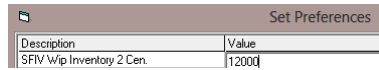
- Can now Save/Restore by Month
 - ▣ Controlled by Preference above
- Added Ending Equivalent Units to Detail Report to go with begin/change equivalent units

Eu Beg = 5,208
 Eu Chg = 164
Eu End = 5,372
 A.Wean = 10.06

SF Inventory Valuation (E.CLIPSE)

- New optional WIP Inventory account
 - ▣ Allows splitting ledger accounts by species
 - ▣ Overrides the "Purchased" account logic

Default Profit Center	P10 Pork Profit Center
Internal Income Account	39010 SF Internal Income
Internal Expense Account	69110 Intrnal Exp Adj SF
Breeding Stock Cost Account	14020 Breed Stock Sows Lin
Inventory Adjustment Acct.	69080 wip SF Invty Adjust
Sales Cost Reducer	30100 Animal Sales Not Lk
Work in Process (Raised)	11270 wip SF Raised
Work in Process (Purchased)	11280 wip SF Purchased
Adjustment Acct. for Feed	69090 wip Feed Adjust
Adjustment Acct. for Drugs	69100 wip Drug Adjust
Inventory Acct. for Feed	11290 wip Feed Inventory
Inventory Acct. for Drugs	11300 wip Drug Inventory
Adj. Center For Feed/Drugs	0 Unallocated/Offset
Division for Posting	0 GSC Livestock



Depreciation

- New fixed asset program from Red Wing
- Unlimited concurrent tax/management schedules
- Will interface with TransAction Plus and Asset Register
- Interface with FBS to begin testing this year