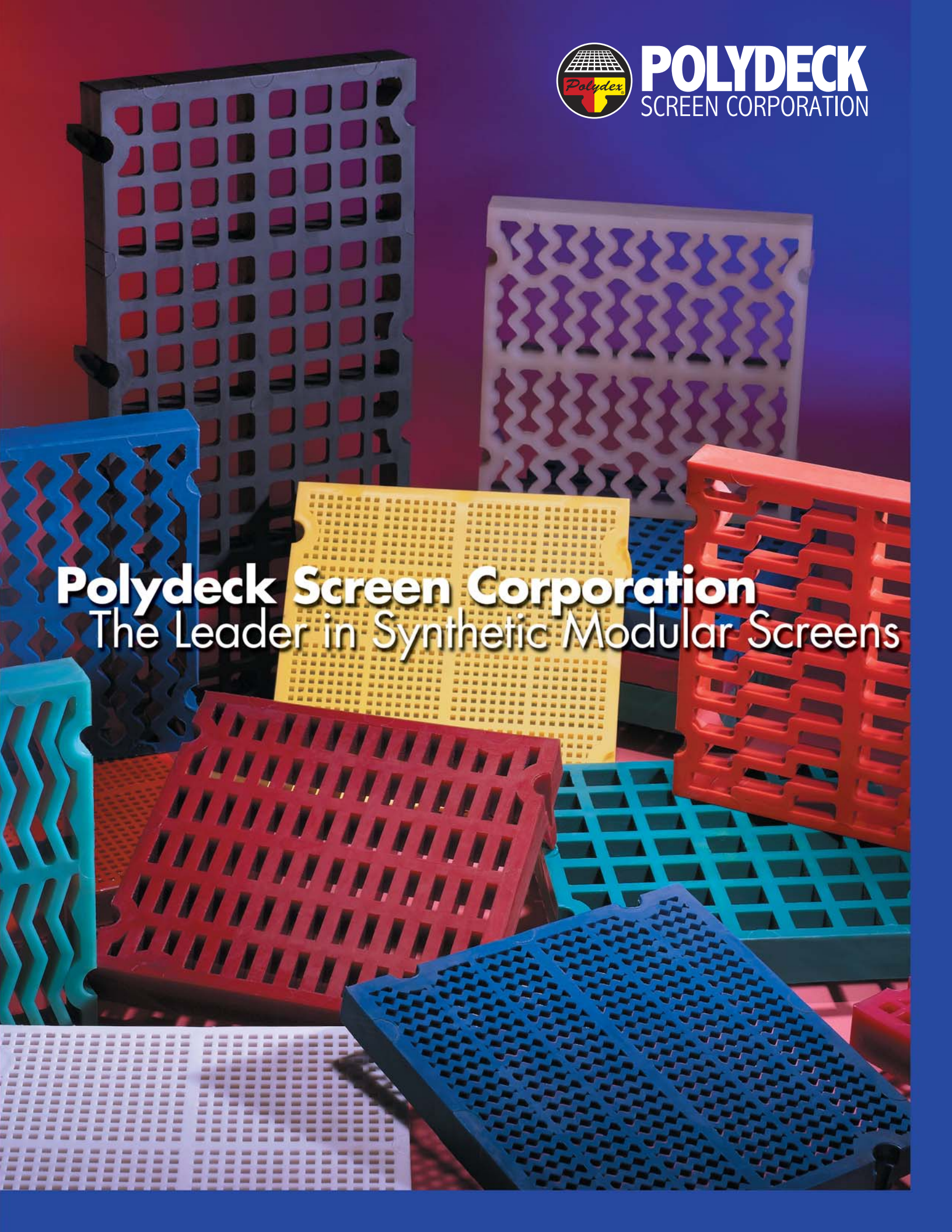




**POLYDECK**  
SCREEN CORPORATION

**Polydeck Screen Corporation**  
The Leader in Synthetic Modular Screens



# OUR MISSION

To be the innovative leader in the modular screen media industry by partnering with our customers and focusing on:

- a proactive Research & Development program,
- uncompromising quality standards, as well as
- guaranteed performance and unrivaled customer satisfaction through superior service and after-sales support.

## Core Values

We are a company grounded in the Christian values of honesty, integrity, respect, kindness, and social responsibility. We strive to honor God in all we do. This is reflected in how we conduct our business and how we care for our employees—our greatest asset.



Leadership is not a one-day occurrence.  
It is a constant commitment to excellence,  
a habit...a daily practice.

Polydeck Screen Corporation, a family owned business, was incorporated in 1978 by our founders who brought the revolutionary Polydex® concept of modular synthetic screening to America.

Developed and tested throughout Europe and Africa in the early 70's, Polydex® was the first truly modular polyurethane screening system for the aggregate and mining industries. Its modularity, simplicity, and cost-saving advantages soon created a worldwide technological revolution in the screen media industry.

In keeping with our commitment to innovation through customer-based research and development, the next generation of Polydeck management has continued to introduce enhancements to the original system. In doing so, we have received more than 40 worldwide patents to date.

Polydex® screening systems have become an industry standard, widely preferred by major aggregate, coal, copper, diamond, gold, iron, phosphate, potash, salt, silver, and steel producers throughout the world.

Our growth and success not only comes as a result of our experience and innovation, but also from the unwavering commitment Team Polydeck has to customer service and satisfaction.



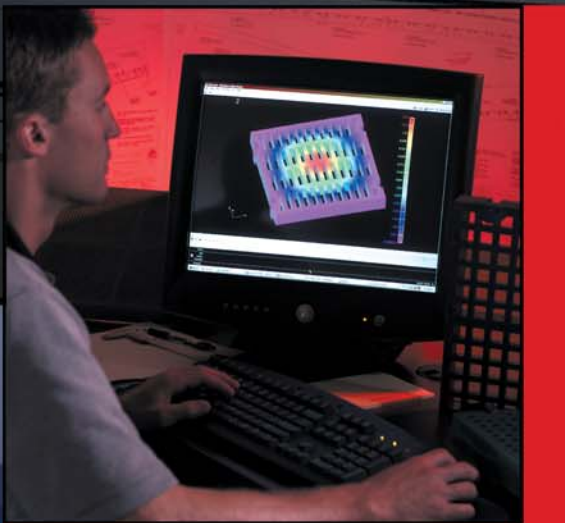
FOUNDERS



NEXT GENERATION



TEAM POLYDECK



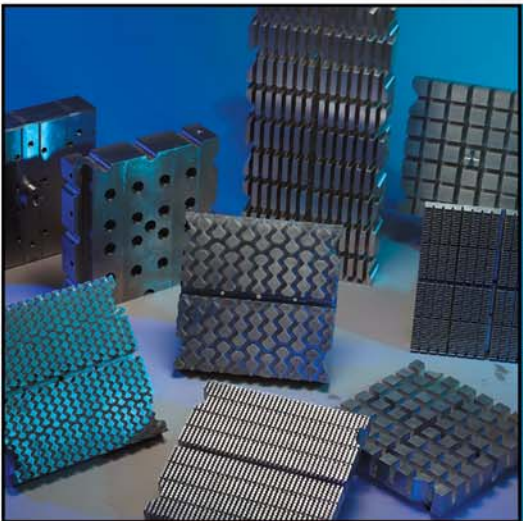
FINITE ELEMENT ANALYSIS (FEA)



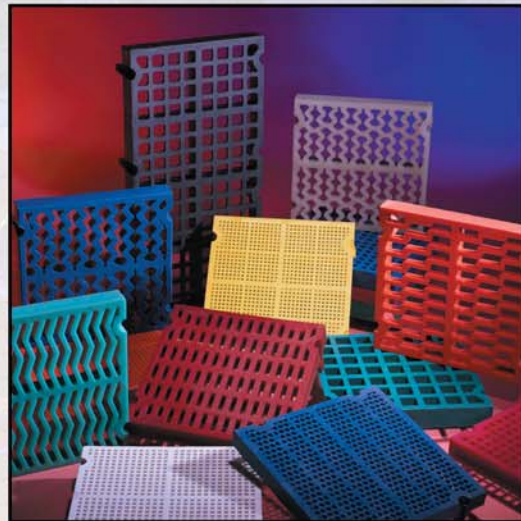
ENGINEERING

# Innovation through Research & Development

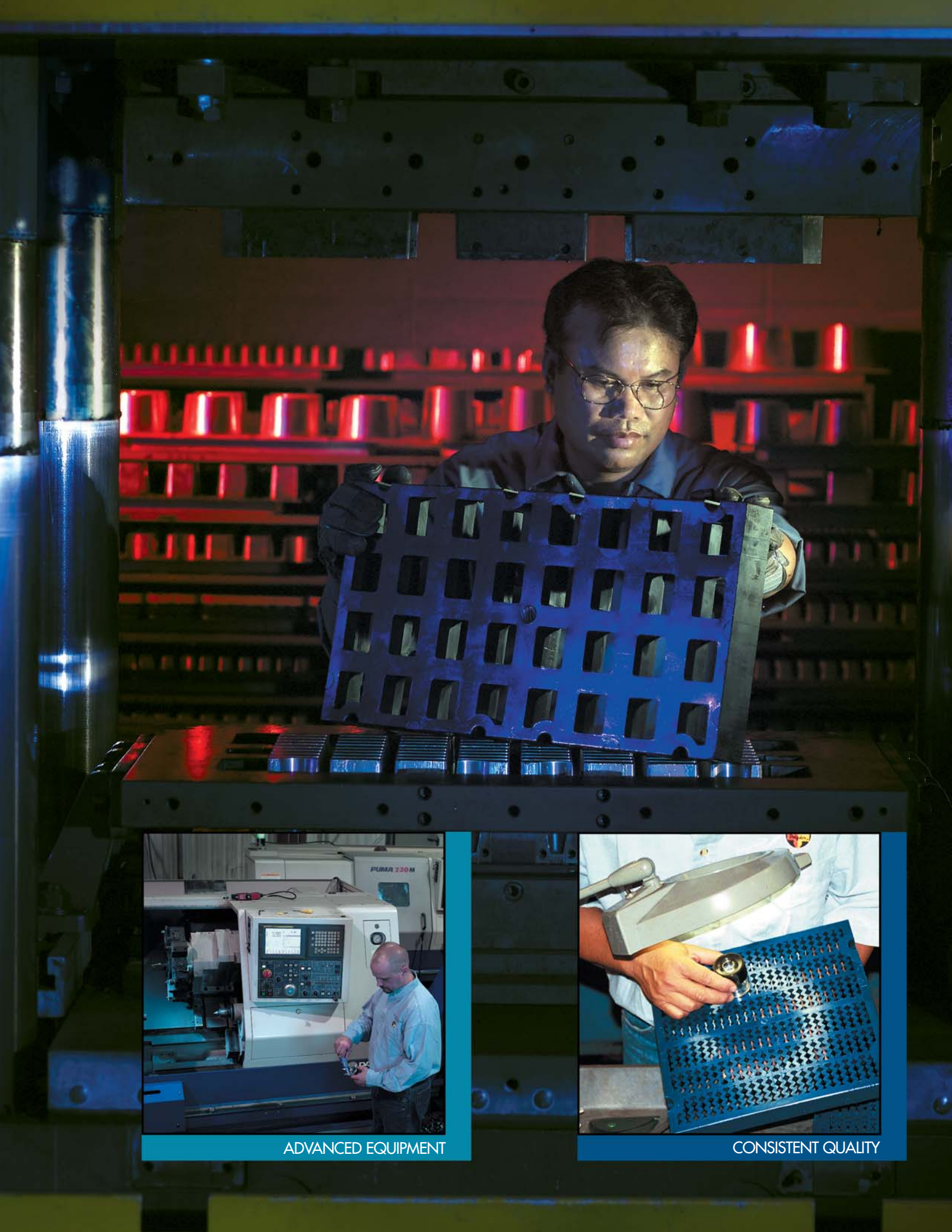
- Screen media and frame systems are our total focus; we are not part of a larger corporation, which means optimizing the efficiency of your screening operation gets our complete attention.
- Our R&D efforts are centered on providing our customers with a screening solution that maximizes production throughput, minimizes maintenance requirements, and improves worker safety.
- Polydeck's engineering team specializes in transforming application challenges into real solutions.
- Our in-house tool and die facility is equipped with state-of-the-art CNC and CAD/CAM tools that enable us to design prototypes and test concepts to ensure proper performance before going into production.



UNIQUE DESIGNS



TOTAL SOLUTIONS



ADVANCED EQUIPMENT



CONSISTENT QUALITY

# Quality through State-of-the-Art Manufacturing Techniques

- At Polydeck, we employ state-of-the-art manufacturing techniques, including proprietary robotics, injection molding, and sophisticated CAD/CAM equipment, to help us provide effective, yet timely, solutions to the toughest applications.
- These technologies enable us to engineer quality, speed, and accuracy into our manufacturing process.
- Our Polydex® injection-molding process cuts manufacturing time from hours to minutes—allowing us to respond more quickly in emergency situations.
- Polydeck has screen panels designed for all applications—from primary scalping to fine sizing to dewatering. That, combined with our ability to make new dies in-house, allows us to tailor our screen media and frame systems to your specific requirements.



PRECISION MOLDING



AUTOMATION & SPEED

# Industries Served

aggregate

coal

copper

diamond

gold

iron

phosphate

potash

salt

silver

steel





# Success through Field Experience

- Based on our extensive industry and operations experience, and the performance and quality of our products, Polydeck has secured some of the largest screening projects in the world.
- We are staffed by experienced industry professionals and represented by the industries' most respected dealers and agents, assuring you the very best support and service.
- Before making any specific recommendations, Polydeck application and support engineers carefully evaluate your system, your production requirements, and your material characteristics to assure your needs are met.



WIDE RANGE OF APPLICATIONS



THE RIGHT SOLUTIONS



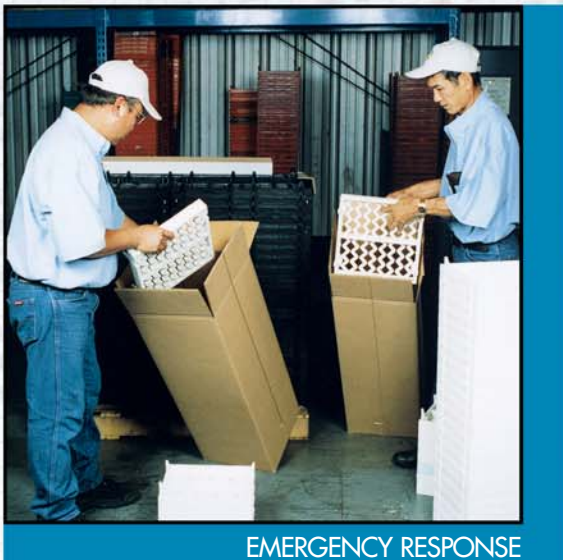
FRIENDLY, EXPEDIENT SERVICE



AVAILABLE INVENTORY

# Customer Satisfaction through Service & Support

- The Polydeck team works together with our worldwide distribution network to assure your success and satisfaction.
- Our inside sales department uses an advanced electronic order entry and tracking system to monitor your order from initial input to final delivery to your site.
- By keeping a large inventory of popular screen panels in stock and available for quick shipment, we can offer the convenience of prompt delivery and fast emergency response.
- Whether you experience an unforeseen breakdown or a screening specification change, we react to your needs in an expedient and professional manner.
- For screening process consulting, installation supervision, training, and start-up service, you can depend on Polydeck's knowledgeable and experienced field representatives.





**GERMANY**

**SOUTH AFRICA**

**Spartanburg SC/USA**

**AUSTRALIA**

**CHILE**



**POLYDECK**  
SCREEN CORPORATION

1790 Dewberry Rd • Spartanburg SC 29307  
Phone: 864-579-4594 • Fax: 864-579-2819  
E-mail: [info@polydeckscreens.com](mailto:info@polydeckscreens.com) • [www.polydeckscreens.com](http://www.polydeckscreens.com)