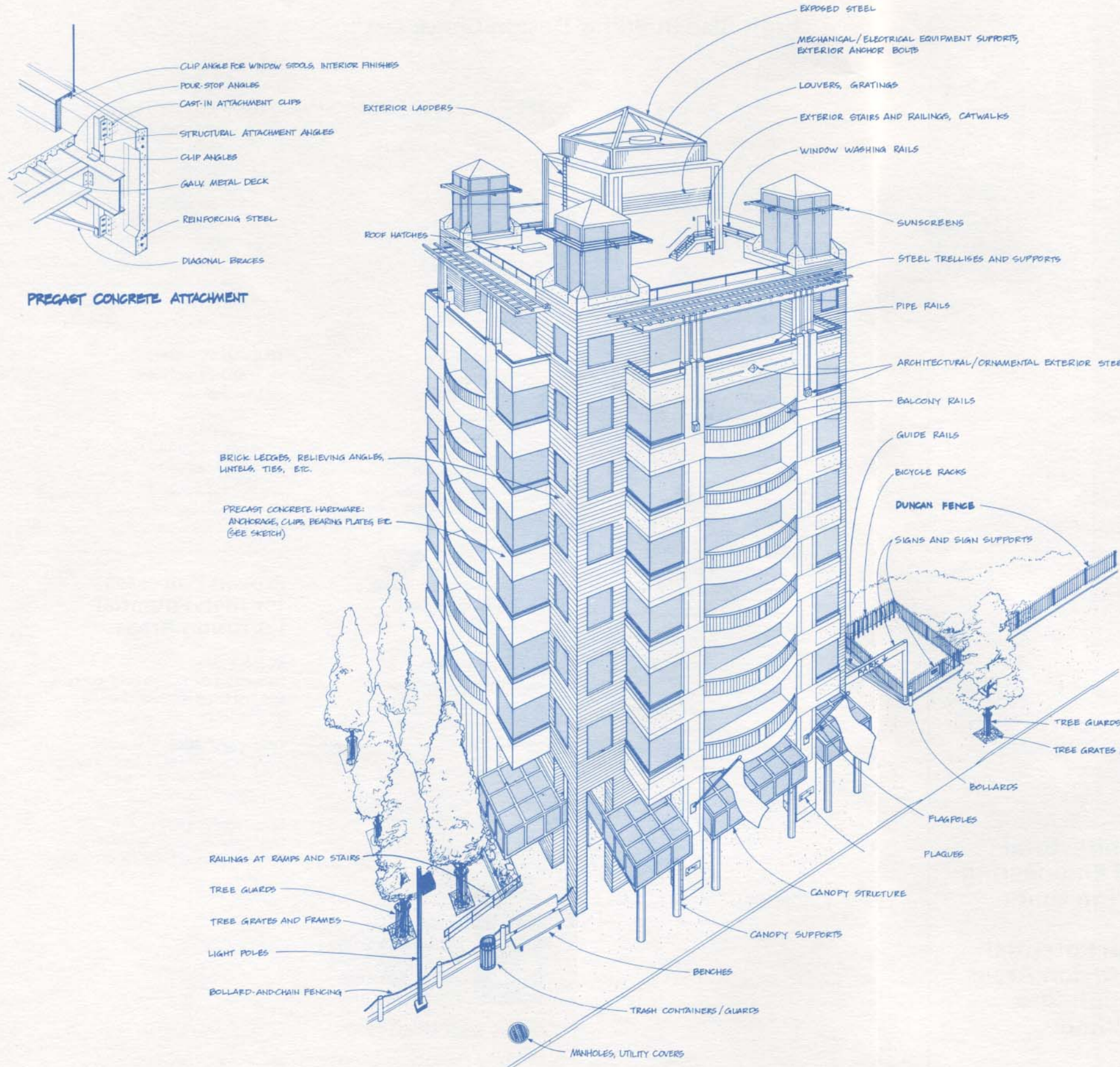
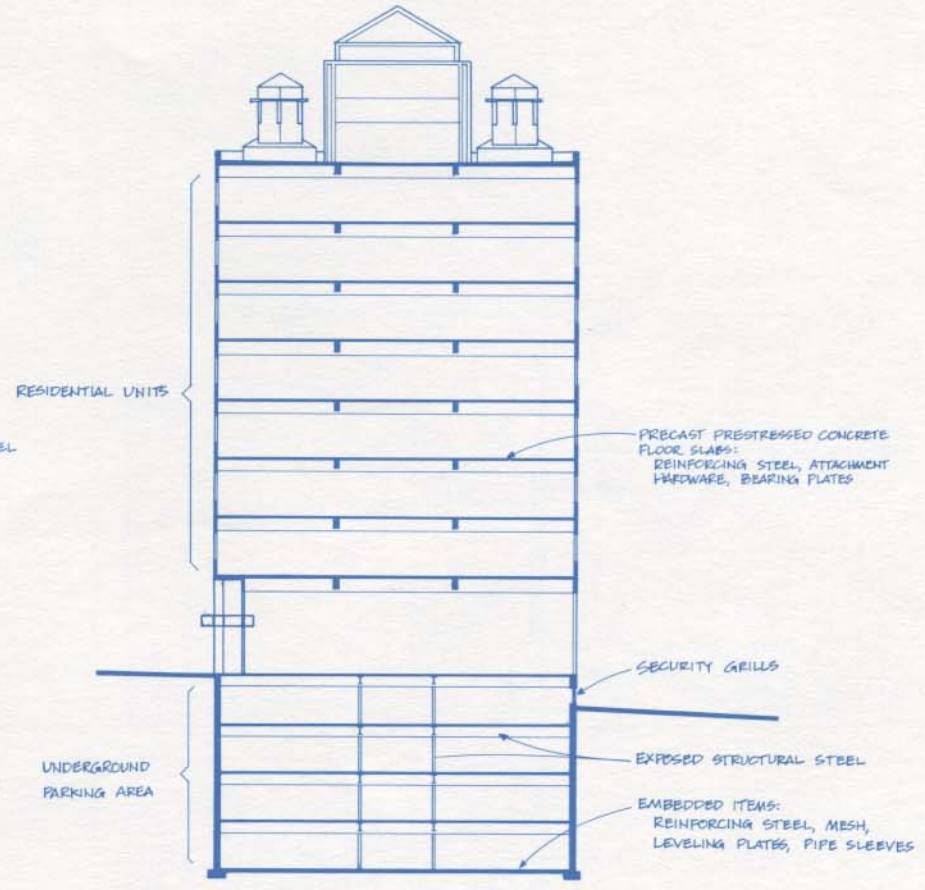


**Architectural
and Engineering
Design Guide**


**High Potential
Corrosion Areas
in High-Rise
Building**



PRECAST CONCRETE ATTACHMENT



BUILDING SECTION SHOWING UNDERGROUND PARKING



High Potential Corrosion Areas
Sheet No. 3
High-Rise Buildings

High-Rise Building Design Check List

Project Name _____ Date _____

Division 2 – Site Work

- Railings
- Fence/Gates
- Duncan Fence**
- Guide Rail
- Signs/Sign Supports
- Benches
- Light Poles
- Bike Racks
- Trash Containers
- Tree Guards
- Manhole Covers
- Utility Covers
- Post & Chain Fencing
- Bollards
- Fountain Accessories
- Metal Sculptures
- Footbridges
- Other _____
- _____
- _____
- _____

Division 3 – Concrete

- Precast Hardware
- Brick Ledges
- Relieving Angles
- Anchor Bolts
- Reinforcing Steel
- Mesh/Embedded Items
- Lintels
- Other _____
- _____
- _____
- _____

Division 4 – Masonry

- Anchor Bolts
- Lintels
- Relieving Angles
- Brick Ledges
- Other _____
- _____
- _____
- _____

Division 5 – Structural/Misc. Steel

- Window Washing Rails
- Support. Steel in Garage
- Structural Supporting Steel
- Railings
- Handicapped Rails
- Fences and Gates
- Duncan Fence**
- Anchor Bolts
- Relieving Angles
- Lintels
- Brick Ledges
- Balcony Rails
- Ladders
- Trash Containers
- Fire Escapes
- Tree Guards
- Catwalks
- Gratings/Hatches
- Channel and Stringers for Exterior Stairs
- Security Light Poles
- Architectural/Ornamental Steel
- Canopy Supports
- Steel in Atrium Area
- Steel in Laundry Area
- Steel in Swimming Area
- Sunscreens/Trellises
- Flag Poles
- Curb Angles
- Pipe Stanchions
- Other _____
- _____
- _____
- _____

Division 15 – Mechanical

- Exterior Anchor Bolts
- Catwalks
- Gratings
- Supporting Steel for Mechanical/HVAC Equipment
- Equipment Screens
- Louvers
- Other _____
- _____
- _____
- _____

Division 16 – Electrical

- Exterior Anchor Bolts
- Gratings
- Pipe Supports
- Supporting Steel for Mechanical/HVAC Equipment
- Light Poles
- Other _____
- _____
- _____
- _____

Proven Processes for High Potential Corrosion Areas

Duragalv (DG)

Enhanced hot dip galvanizing for today's steel utilizing environmentally friendly High Grade zinc.

Colorshield (CS)

A translucent polymer coating that is perfect for those areas where a hint of color is desired.

Primergalv (PG)

A factory applied universal primer for freshly galvanized steel, which is to receive a field-applied topcoat.

Colorgalv (CG)

A patented and warranted factory-applied architectural color finish for hot dip galvanized steel.

Thermoset (TS)

A high performance, dry applied polyester material that can be applied over ANY metal substrate including aluminum, or "black steel". Ideal for interior applications or wherever "architectural definition" is required.

Thermoplex (TP)

A high performance dry applied thermoplastic elastomeric coating that can be applied over ANY metal substrate including aluminum, or "black steel". Exceptionally durable, it has been proven to withstand 20,000 salt spray testing.

Colorgalv Thermoset (CGTS) and Colorgalv Thermoplex (CGTP)

Where extreme corrosion is a concern, Duncan Colorgalv Thermoset and Duncan Colorgalv Thermoplex are designed to be applied over a freshly galvanized surface.



Duncan Galvanizing
69 Norman Street
Everett, MA 02149

Tel 617-389-8440
Fax 617-389-9277

Quality Since 1890