

# Temperature Probe Installation and Replacement

(PN 1288250602SP)

When properly installed, the temperature probe will send a signal to the sign's controller board that indicates the accurate ambient temperature near the sign. The temperature probe with the standard cable (pn 71220401) can be mounted within 25 feet of the sign. This distance can be extended by changing the length and gauge of the cable. Contact Technical Support for more information.

For two or more signs connected as Master/Secondary or Master/Slave, connect the temperature probe to the Master sign.

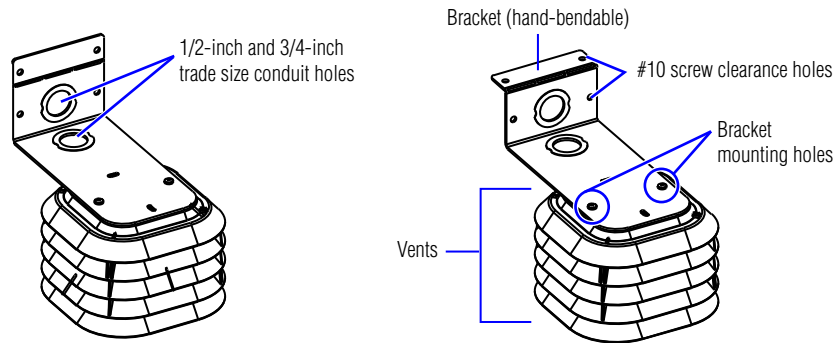


Figure 1: Temperature probe and mounting bracket.

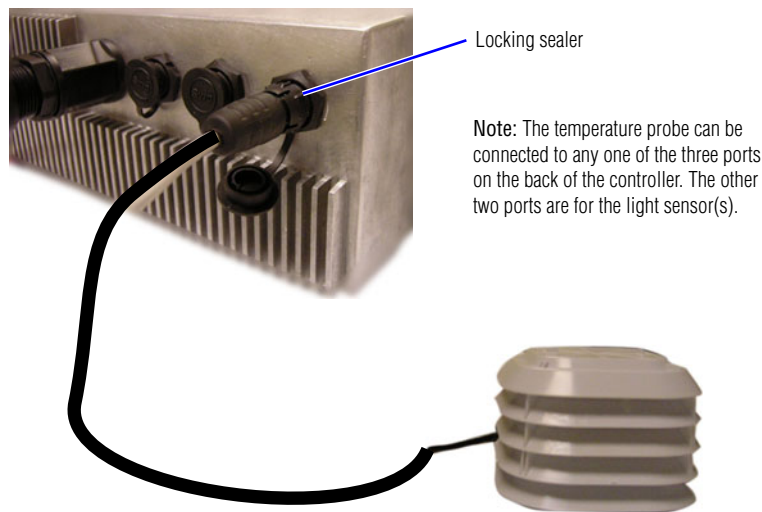


Figure 2: Controller on the back of the sign (bottom right-most case).

## Contents

- One temperature probe
- One bracket
- Two Phillips-head screws (in the bag with the bracket)
- Instructions

## Tools

Phillips-head screwdriver and other tool(s) depending on the how the temperature probe is mounted.

## Inside:

Requirements and guidelines, page 2

Installing the temperature probe, page 3

Replacing the temperature probe, page 4

## Requirements and guidelines

### Requirements for temperature probe mounting

Notice: Do **NOT** mount the temperature probe along the top of the sign, on the sign, near sprinklers, or water fountains.

Failure to follow the temperature probe mounting requirements may cause intermittent or inaccurate operation and will not be covered by the warranty.

Vents on the temperature probe **must** point downward.

### Guidelines for temperature probe mounting

Choose a mounting location that meets the following criteria, otherwise the temperature probe will record a false temperature reading:

- On the sign super-structure below the sign. **Do NOT mount directly to the sign.**
- Air movement is not restricted by nearby walls or other obstructions.
- Mounting background is light-colored and not dark-colored.
- Above vegetation and not above asphalt or blacktop.
- On the north side of a building to provide protection from the sun.
- Shield the probe from the effect of the direct sun, reflected heat, or any nearby sources of heat, such as chimneys, lamps, vents, or HVAC ducts.
- At least six feet off the ground, and at least one foot below the eave of a protected overhang so convection currents (rising hot air flow) are not trapped around the temperature probe. Also, make sure convection currents are not blocked by mounting plates.
- Only one temperature probe is required in a network of signs but it **must** be connected to the Master sign.

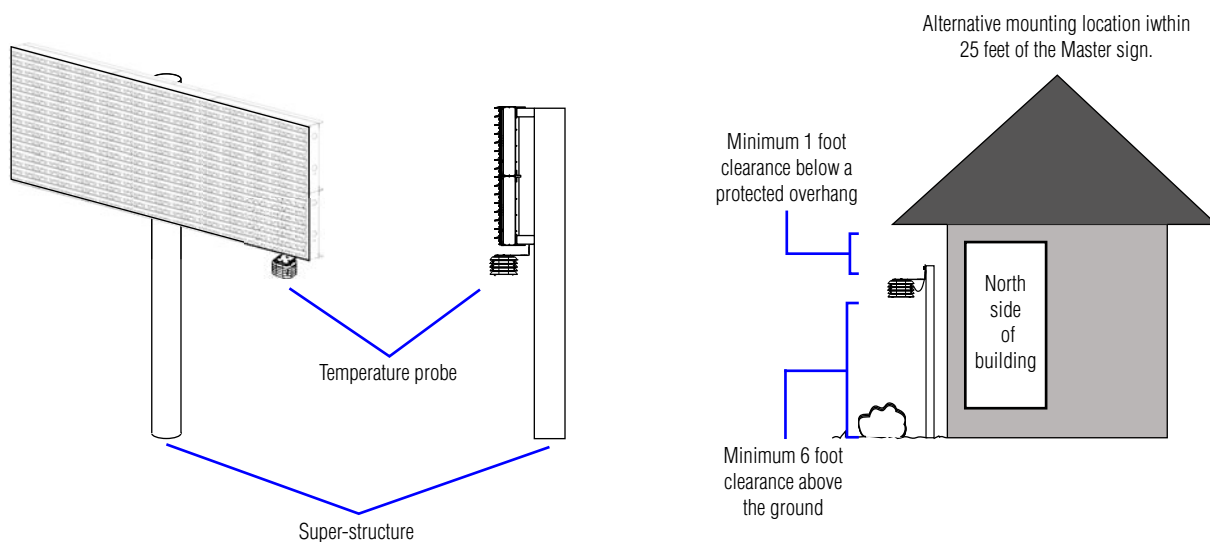


Figure 3: Temperature probe mounting

## Guidelines for drilling into the sign's sub-structure

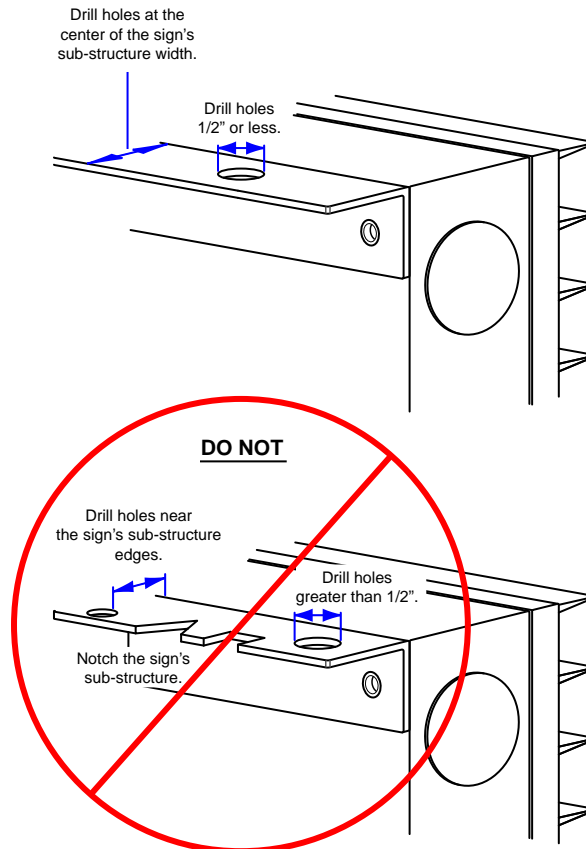


Figure 4: AlphaEclipse sub-structure drilling guidelines

## Installing the temperature probe

The sign will only recognize the presence of the temperature probe when it first starts. If you connect the temperature probe while the sign is powered on, you will have to cycle power to the sign so it will acknowledge the presence of the temperature probe.

### ⇒ To install the temperature probe on an Excite sign

1. Affix the bracket to the temperature probe base.
  - Route the cable through the conduit hole(s) as appropriate.
  - Insert the two Phillips-head screws through the screw holes, and fasten the bracket to the temperature probe with the vents on the probe pointing down.

**Note:** Hand-tighten the screws to avoid stripping them.

2. The temperature probe **must** be mounted with the vents pointing downward using the mounting holes OR the conduit holes on the bracket.
3. Connect the temperature probe cable to the controller on the back of the sign.

- Line up the connectors and gently push the temperature probe connector into one of the connectors on the back of the controller.

**Note:** The temperature probe can be connected to any one of the three ports on the back of the controller. The other two ports are for the light sensor(s).

- Turn and push in the locking sealer in a clockwise direction.
  - Once the sealer goes in, turn 1/2 turn clockwise.
4. Cycle power to the sign.  
The sign will not acknowledge the presence of the temperature probe until power is cycled.

## Replacing the temperature probe

### ⇒ To replace the temperature probe on an Excite sign

1. Disconnect the temperature probe from the sign.
  - Turn the locking sealer 1/2 turn counterclockwise and pull out, away from the controller (it should pop out away from the controller as you turn).
  - Carefully pull out the temperature probe cable.
2. Remove the temperature probe and bracket.
  - Remove the cable routed through the bracket.
  - Remove the bracket from the surface to which it is mounted.
3. Mount the new temperature probe to the new bracket.
  - Route the cable through the conduit hole(s) as appropriate.
  - Insert the two Phillips-head screws through the screw holes and fasten the bracket to the temperature probe with the vents on the probe pointing down.  
Note: Hand-tighten the screws to avoid stripping them.
4. Mount the new temperature probe.  
Mount the temperature probe using the mounting holes on the bracket, making sure the vents on the probe are pointing down.
5. Connect the temperature probe cable to the controller on the back of the sign.
  - Line up the connectors and gently push the temperature probe connector into one of the connectors on the back of the controller.  
Note: The temperature probe can be connected to any one of the three ports on the back of the controller. The other two ports are for the light sensor(s).
  - Turn and push in the locking sealer in a clockwise direction.
  - Once the sealer goes in, turn 1/2 turn clockwise.
6. Cycle power to the sign.  
The sign will not acknowledge the presence of the temperature probe until power is cycled.