



Newman Consulting Group LLC

Private Home Bloomfield Hills, MI



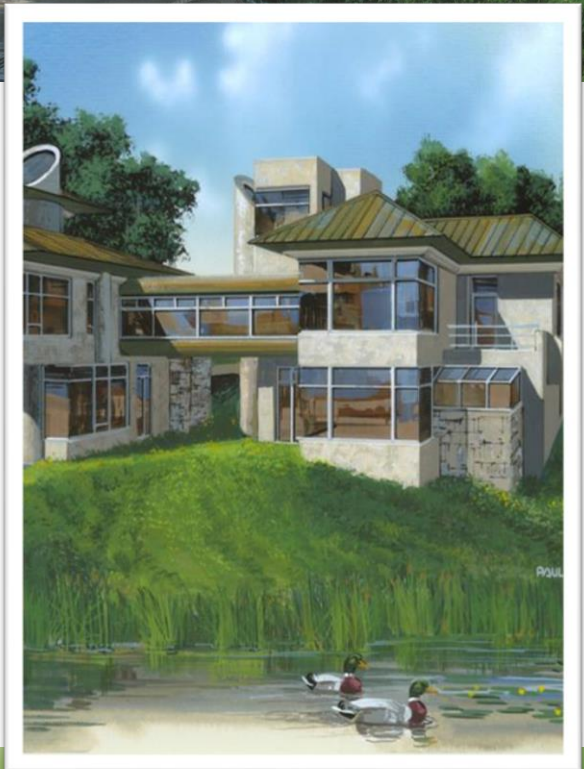
LEED Facts

Private Home
Bloomfield Hills, MI

LEED for Homes
Certification awarded August 5, 2011

Platinum	114
Innovation and Design	7/11
Location and Linkages	7/10
Sustainable Sites	17/22
Water Efficiency	11/15
Energy and Atmosphere	35.5/38
Materials and Resources	13.5/16
Indoor Environmental Quality	21/21
Awareness and Education	2/3

*Out of a possible 136 points



Private Residence Bloomfield Hills, Michigan

Project Background

“It has to be green.” That was the guiding thought behind Gail Danto and Art Roffey’s new home. Inspired by trips to South America where they were influenced by the tribal people’s connection to the land, the couple was determined their home would reflect that caring attitude. After selecting the ideal site, on a secluded lot overlooking a lake, Roffey and Danto enlisted a team of experienced architects, engineers and designers to create a beautiful, elegant home that “honors the environment.”

From the Ground Up

The previous home stood on one part of the lot. To minimize waste, it was carefully deconstructed and the materials were either recycled or donated. A natural swale cuts right through the lakeside lot, posing another challenge. To accommodate the swale, the home was designed in two sections, one constructed on each side of the swale, connected by a bridge. The landscaping surrounding the home features varieties of indigenous and drought-tolerant plants that eliminated the need for a sprinkler system.

Green at Every Turn

Most of the building materials came from within a 500-mile radius of the home, and the team made every effort to utilize the latest and best sustainable technology that was available for a home:

- Geothermal heating and cooling
- Solar panels that provide supplemental power
- Windows with low e-coating
- Graywater system collects/filters water for non-drinkable use
- Indoor lighting activated by sensors
- Energy Star-rated appliances

In addition, ample skylights and many floor-to-ceiling windows allow for natural light, not to mention magnificent views of the natural surroundings. Even the fabric from bamboo used on chairs reflects the “green” mentality. The couple’s commitment and the team’s attention to every detail paid off. This home earned LEED Platinum certification.

About Newman Consulting Group

Newman Consulting Group (NCG) helps engineers, building owners and contractors create a superior workplace that reduces energy use as well as negative impacts on the environment while enhancing the health, comfort and productivity of the building occupants. NCG works throughout the world to design and construct more energy-efficient and sustainable buildings to LEED® and Energy Star® Guidelines.

About LEED

The LEED® green building certification program is the national benchmark for the design, construction, and operations of green buildings. Visit the U.S. Green Building Council’s Web site at www.usgbc.org to learn more about LEED and green building.

Architect: Young and Young Architects, Inc.
Interior Designer: Diane Hancock Designs
MEP Engineer: Peter Basso Associates, Inc.
LEED Consultant: Newman Consulting Group

Contractor: Artisan Group
Lighting Designer: Ron Hainer Lighting Designs
Landscape Architect: Environmental Artists
Project Size: 6,800 square feet