

The Leader in Infrastructure Automation



Our mission is to make the task of managing Big Infrastructure easy. StackIQ Cluster Manager, our comprehensive software suite, automates the deployment and management of Big Data, Cloud, Linux and HPC clusters.

Innovative Solutions

Integrated management solutions designed to take the pain out of deploying and maintaining large-scale compute and storage infrastructure.

Expertise

Our engineering team has been building infrastructure management solutions for over a decade.

Our Customers

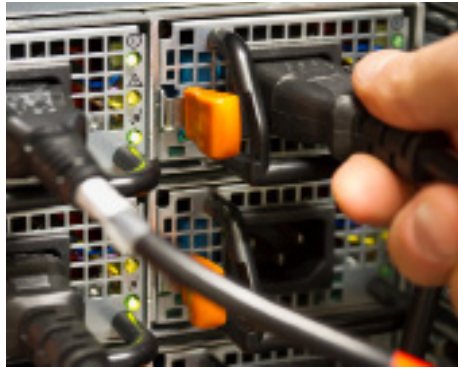
Our customer is the IT professional responsible for building and taking care of compute, storage, and network infrastructures that underlie large-scale applications. Typical use cases include Big Data, cloud infrastructure, HPC, and general enterprise Linux applications.

Big Data — Customers using StackIQ Cluster Manager for Big Data come from diverse industries, including financial services, communications and healthcare. Typically, our customers face challenges in scaling production clusters beyond 100 nodes in a heterogeneous environment. StackIQ Cluster Manager helps them overcome these challenges by automating the deployment and management of Big Infrastructure. It provides heterogeneous hardware support, bare metal OS provisioning, programmatic

disk and network management, and tight integration with native Hadoop and NoSQL management systems.

Cloud Infrastructure — StackIQ Cluster Manager excels at deploying and managing Big Infrastructure for private and public clouds. Because of its modular architecture, StackIQ Cluster Manager is able to extend its capabilities to configure, deploy, and manage open cloud APIs, including OpenStack and CloudStack.

HPC (High Performance Computing) — StackIQ Cluster Manager is the commercial version of the Rocks open source project from the San Diego Supercomputing Center. It is widely used in this capacity in scientific organizations and commercial enterprises. Customers include Johns Hopkins, Tesla Motors, and Procter & Gamble.



Enterprise Linux Migration — StackIQ Cluster Manager is built on an open framework that has been used to manage a wide variety of general enterprise Linux applications. It was designed to turn commodity x86 components into powerful, tightly coupled managed systems — perfect for enterprise customers planning a data center transformation or migrating from proprietary servers or mainframes.

Our Partners

Our hardware partners include the leading server manufacturers Cisco, Dell, and HP. Close collaboration ensures that our customers can take full advantage of the hardware capabilities. We also partner with the best applications software vendors to ensure a completely integrated solution. Our Big Data partners include the foremost Hadoop innovators Cloudera, Hortonworks, MapR and select NoSQL software providers including DataStax. In cloud infrastructure, we integrate with the leading virtual machine software companies including Red Hat and Citrix. And in high performance computing, we partner with the top workload manager software developers including Univa, Adaptive Computing, Altair, and others.

Our Roots

StackIQ was founded in 2006 to provide the commercial version of the open source cluster management software — Rocks. With more than a decade of growth

and development, Rocks remains the de facto industry standard for managing high performance compute clusters. There are over a million nodes in more than 10,000 clusters under management by Rocks. Being open source, Rocks benefits from an active, growing, global community that shares ideas and contributes to the project. StackIQ is fortunate to have two of the original authors of Rocks leading the engineering team.

Move to the Cloud

Cloud computing has seen accelerated adoption over the past years and it's not expected to slow down anytime soon. This development brought new capabilities into the datacenter. It allows any organization to increase or add capabilities without investing in new infrastructure. However, the management and deployment of cloud infrastructure can be difficult for even the most experienced IT professionals. In 2010, StackIQ saw an opportunity to bring Rocks+ technology to the cloud infrastructure market, and launched Rocks+ Cloud early in 2011.

Big Data Has Arrived

Once the sole dominion of large-scale web properties such as Google and Facebook, Big Data techniques made their way into enterprises of all sizes. The availability of powerful, open source software tools such as Apache Hadoop and Cassandra has put the benefits of large-scale data analysis



within the reach of nearly anyone. However, these Big Data solutions share something in common with high performance clusters - Big Infrastructure. As many struggle to stand up the compute and storage infrastructure necessary to do meaningful analysis, they are discovering the power of StackIQ Cluster Manager.

Shift to Web-Scale IT

With a constantly increasing amount of data and more complex application requirements, Web-scale IT is on the rise. This requires IT teams to be able to move faster to deploy and manage large infrastructure. To keep up with these ever growing demands, enterprise data centers migrate from proprietary operating systems to Linux. Many steps related to migrating enterprise Linux applications are still done manually and are error prone. StackIQ Cluster Manager provides a solution that automates the deployment and management of enterprise Linux applications

