

PIPER M350



piper.com | 772.299.2403



Escape The Ordinary

The M350 is the answer for any pilot who seeks an aircraft with increasing sophistication. Unparalleled safety, impressive range, relentless power, and ample cabin room are just a few reasons to choose the M350. Regardless of your current plane, Piper's M350 will cause you to consider an alternative to the ordinary. Fly the extraordinary.



M350

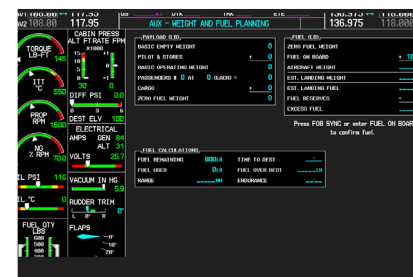


Safety Meets Performance

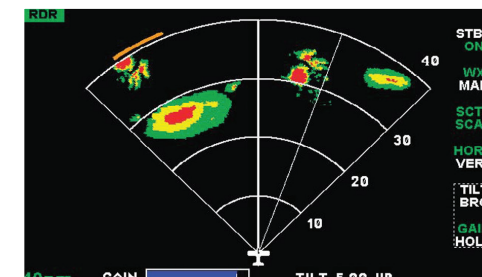
The M350 features the G1000 flight deck with latest and most advanced software. With a seamlessly integrated package that makes flight information easier to scan and process, its revolutionary design brings new levels of situational awareness, simplicity, and safety to the cockpit. The G1000 puts a wealth of flight-critical data at your fingertips and presents flight instrumentation, navigation, weather, terrain, traffic, and engine data on large-format, high-resolution displays.

The M350 flight deck in progressive configuration was designed for intuitive access to multiple controls in flight. The improved 12.4" Multifunction Display (MFD) and accompanying dual 10" Primary Flight Displays (PFDs) are high-resolution, contributing to improved visibility and clarity to give you all of the information you need to fly safely. An added Aspen EFD-1000 standby instrument has replaced the traditional electromechanical gauges and wet compass. The relocated Autopilot controller allows for better accessibility on a redesigned, improved panel. A fully integrated digital pressurization system, centrally located audio panel, and electroluminescent placards further improve situational awareness due to improved cockpit workflow. Additionally, the GTX 33 Extended Squitter Transponder, when coupled with the optional GTS 825 Traffic Advisory System, provides the aircraft with ADS-B In and Out functionality.

Unmatched among its peers, the M350 is characterized by competency with the most advanced technological enhancements in its class. The Piper M350 is the ultimate choice in safe and reliable aircraft.



Multi-Function Flight Display (MFD) In the center of the panel, engine data, charts, traffic, weather, flight plans, menus, and more are displayed on the large format, high-resolution, 12.4" display. Garmin's intuitive, user-friendly interface makes the MFD simple to navigate, and puts a wealth of information at your fingertips.



Weather Monitoring The M350 offers the unsurpassed (optional) on-board radar capabilities of the Garmin GWX 68 digital color radar. The GWX 68 registers and reports back the weather ahead with its 6.5 kilowatts of power. In addition, with a subscription to XM WX Satellite Radio/Weather, the GDL 69A provides datalink weather, with NEXRAD radar, winds aloft, METARs, TAFs, lightning, icing, and other information available in the U.S.



Garmin GFC 700 The fully integrated flight control system provides exceptional flight automation with a dual AHRS-based system. The system offers exclusive safety features and incomparable performance, seamlessly integrating a flight director, autopilot, automatic trim, and yaw damper into the G1000 suite.



Safety Redefined

Built better than ever for the demands of business commute or leisure travel, the M350 accommodates your active lifestyle. M350 is the only pressurized piston aircraft featuring the latest Garmin G1000 software and enhanced safety features that discerning pilots demand. This industry-leading safety equipment includes all of the revolutionary advancements required to fly safely, securely, and effortlessly. Performance and technology come together to ensure the safest, most intuitive flight.

Pulse Oximeter

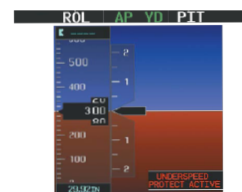
The M350 features a panel-mounted pulse oximeter. The pilot's heart rate and blood oxygen saturation can easily be measured and displayed on the MFD, along with continuous monitoring of carbon monoxide levels in the cabin.

Hypoxia Recognition System With Automatic Descent Mode

The Hypoxia Recognition System detects pilot incapacitation as a result of hypoxia by monitoring pilot interaction with the PFD, MFD, and Autopilot Controller at altitudes above cabin 14,900 feet with the autopilot engaged. If no interaction is detected within a specified time period, this system will engage Automatic Descent Mode and bring the aircraft to a lower altitude in an effort to allow recovery from hypoxia. The M350 can safely fly itself, without assistance, to lower altitudes in the unlikely case the pilot becomes unresponsive.

Underspeed Protection (USP)

Underspeed Protection (USP) is an intuitive flight director function that reacts to underspeed conditions in a way that allows the autopilot to remain engaged, but prevents the airplane from stalling.



Automatic Level Mode (Blue Button)

The M350 features the pinnacle of pilot and passenger peace of mind: Level Mode, a function that, when triggered, will return the aircraft to a wings level attitude with zero vertical speed. Upon activation, Level Mode will automatically engage the flight director and autopilot functions to return the aircraft to straight and level flight. By simply pressing a blue button, Level Mode is engaged and cancels all armed and active modes. This ingenious additional safety measure provides further reassurance for pilot and passengers in the circumstantial case it would be required.



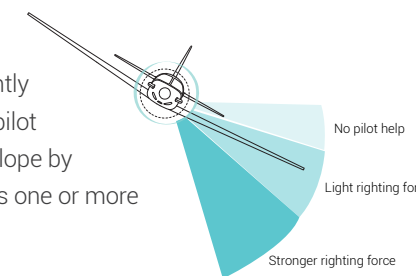
Synthetic Vision

Garmin Synthetic Vision Technology takes situational awareness to a new level, regardless of what you can or cannot see through the windshield. Acquiring information from multiple certified databases, synthetic vision graphically depicts obstacles, terrain, water, and airports, providing you with all of the information you require for safer travel.



Electronic Stability Protection (ESP)

Preventing the onset of stalls, spins, steep spirals, and loss-of-control conditions, this passive feature discourages aircraft operation outside the desired flight envelope. ESP functions independently of the autopilot system, and only takes effect when the pilot is hand-flying the aircraft with the autopilot disengaged. It works as a soft barrier to keep the Piper M350 inside the preferred performance envelope by automatically engaging servos to slightly correct control surface positions when the aircraft exceeds one or more flight parameters, essentially encouraging it back inside optimal flight specifications.



Coupled Go-Around

With stall protections developed as part of the USP system, coupled go-arounds are possible without disengaging the autopilot. With this feature, the autopilot remains engaged and will fly the missed approach. If power is not added, the USP system will maintain a speed just above stall warning, adjusting airplane pitch attitude as required.

GTS 825 + GTX 33 ES = ADS-B In and Out

The standard GTX 33 ES provides ADS-B out functionality. ADS-B In can be achieved by adding the optional GTS-825 Traffic Advisory System.

The GTS-825 (ADS-B In) traffic systems provide a comprehensive traffic picture. It can track up to 75 targets within a 40 nm interrogation range. Additionally, spoken ATC-like aural alerts help manage your flight safely.



Specifications

M350 | \$1,155,500 **

Standard Equipped List Price

Engine

Turbocharged Lycoming TIO-540-AE2A

Horsepower: 350 hp

Number of Cylinders: 6

TBO: 2,000 hours

Propeller

Hartzell 3 Blade | Composite | Constant Speed

Weights

Maximum Takeoff Weight: 4,340 lbs | 1,969 kg

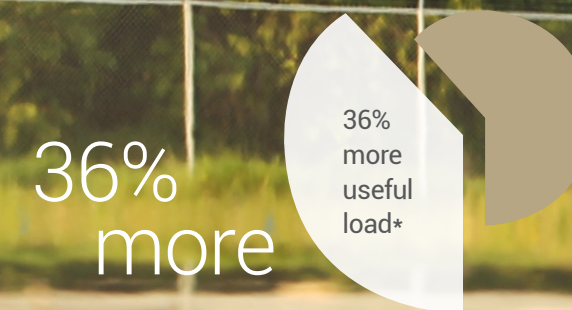
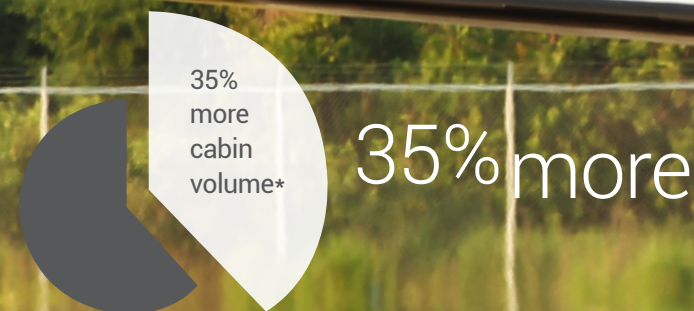
Maximum Ramp Weight: 4,358 lbs | 1,977 kg

Standard Equipped Weight: 3,050 lbs | 1,383 kg

Standard Useful Load: 1,308 lbs | 593 kg

Dimensions

Wingspan 43.0 ft/13.1 m | Length 28.9 ft/8.8 m | Height 11.3 ft/3.4 m



Standard Equipment

AVIONICS

Garmin G1000 Avionics Suite with Synthetic Vision
Dual 10" PFDs, Single 12.4" MFD, Dual GIA 63W NAV/COM/GPS, GFC 700 Autopilot, GMC 710 AP Controller, GCU 476 Keypad, Garmin FliteCharts, SafeTaxi, GMA 350 Digital Audio Panel, Dual GDC 74A Air Data Computers, GTX 33 ES Mode S Transponder and Aspen EFD 1000 Standby Flight Instruments

OTHER EQUIPMENT

Yaw Damper System, PiperAire Air Conditioning, Speed Brakes, Dual USB ports, Hardwired Cockpit Bose A20 Headsets, Leather Interior, M350 Pilot Training Course

Optional Equipment

AVIONICS EQUIPMENT OPTIONS

233: Enhanced AFCS Enablement – \$7,350

235: Jeppesen ChartView – \$4,110
(one year subscription to Jeppesen PilotPak)

256: GSR 56 Iridium Transceiver – \$16,700

268: GWX 68 Weather Radar – \$41,820

269: GDL 69A XM WX Satellite Radio/Weather – \$11,350
(includes GRC 10 remote)

330: WX-500 Stormscope – \$11,350

352: ADF Becker 3500 – \$14,700

450: TAWS-B – \$12,500

563: DME BendixKing KN 63 – \$10,600

631: GTX 33ES Second Digital Transponder – \$10,455

641: Diversity Digital Transponder – GTX33D ES with
Dual Antennas – \$14,500

825: GTS 825 Traffic Advisory System – \$34,300
(ADS-B in capability)

ADDITIONAL OPTIONS

215: 115 volt AC Power Outlet – \$6,000

298: Flight Into Known Icing (FIKI) – \$78,950

363: United Kingdom Lighting Package – \$1,400

700: Top Metallic Basecoat – \$6,825

710: Bottom Metallic Basecoat – \$6,825

715: Nonstandard Paint Scheme – quoted
upon request

Premier Elegance Interior (Dune or Glacier) – \$2,080

AMSAFE: AmSafe Aviation Airbag System (crew seats) –
\$5,950 (installed after delivery)

Additional Special Options – quoted upon request

Maximum
Cruise Speed

213 ktas | 395 km/h

Range with
45 Min. Reserve

1,343 nm | 2,487 km

Maximum
Approved Altitude

25,000 ft | 7,620 m

Fuel Capacity

Useable:
120 US gal | 454 liters

Takeoff Distance

Ground Roll: 1,087 ft | 331 m
Total Over 50 ft Obstacle:
2,090 ft | 637 m

Landing Distance

Ground Roll: 1,020 ft | 311 m
Total Over 50 ft Obstacle:
1,968 ft | 600 m

Cabin Pressurization

Maximum Cabin Differential:
5.6 psid

* Data compared to closest competitive six-place, single piston aircraft – Source: Conklin & de Decker 2015 Vol 1

** Fly-Away-Factory (F.A.F.) Vero Beach, FL – Dealer delivery and local taxes extra.



Mesa Interior



Cabin Class

Escort your passengers into customized cabin comfort while you step into a cockpit with contemporary design. The M350 is the only cabin class electromechanical pressurized piston built today. Certified for flight up to 25,000 feet, the M350 allows you to travel far above most of the world's weather comfortably. Six-place club seating with plush leather provides luxurious transport, without sacrificing expansive legroom for all. Standard USB ports and optional 115 V AC power outlets, create a convenient workspace while traveling, with a retractable workstation that disappears into the side panel when not in use. The flexible cabin design accommodates both business and leisure trips, a necessity for today's pilot who accepts nothing less than the best available.



Styling

Upgraded Premier Elegance Interior Shown



Summit Interior

The interior is finished in hand-selected leather and luxurious, durable carpeting. Select between two color palettes: Mesa or Summit, with a headliner and side panels in complementary colors. Up front, the leather-wrapped cockpit feels more like the flight deck of a business jet, designed with simplicity and safety at the forefront of your flight.

Piper Peace of Mind

Global Customer Support

When you purchase a Piper aircraft, you purchase peace of mind. This reassurance begins with knowing that the Piper Aircraft Customer Support Desk is available 24 hours a day, seven days a week, to answer questions and help diagnose any issues. The Piper Authorized Network of Service Centers is comprised of more than 80 independently owned centers, guaranteeing that you get quality and convenient support. What's more, to supplement dealer parts inventory, our association with Aviall and their network of 40 customer service centers worldwide ensures that parts are on hand when and where they are needed. We are not just in the business of building aircraft, but also building relationships that last – far beyond the delivery of your new plane.

Fly-Away Warranty

As part of our commitment to our customers, Piper offers outstanding warranties on all new M350 aircraft. The combination of advanced technology, performance, and quality makes the Piper M350 the most sought after aircraft in its class. Piper Aircraft offers a comprehensive two-year warranty on airframe, avionics, and electrical.

From flight training to service centers, comprehensive customer care and product support are our primary priorities. With an experienced team standing by to support you and your airplane, peace of mind comes standard with your purchase of the Piper M350.



With more than 100 sales and service centers around the globe, you can be sure we have the support you need in your area. Scan to find your closest Piper sales or service center.



piper.com







Piper Aircraft, Inc. reserves the right to make changes, including, but not limited to, changes in specifications, materials, equipment and/or prices at any time without prior notice. It is the responsibility of the pilot to conduct all operations in accordance with the approved Pilot's Operating Handbook, which is the only official source of data.
© 2015 Piper Aircraft, Inc.



Piper Aircraft, Inc. | 2926 Piper Drive | Vero Beach | FL | 32960 | 772.299.2403

piper.com | 1.866.FLY.PIPER