

PIPER | 2014
MATRIX



piper.com | 772.299.2403



*Luxury
with
a
purpose.*

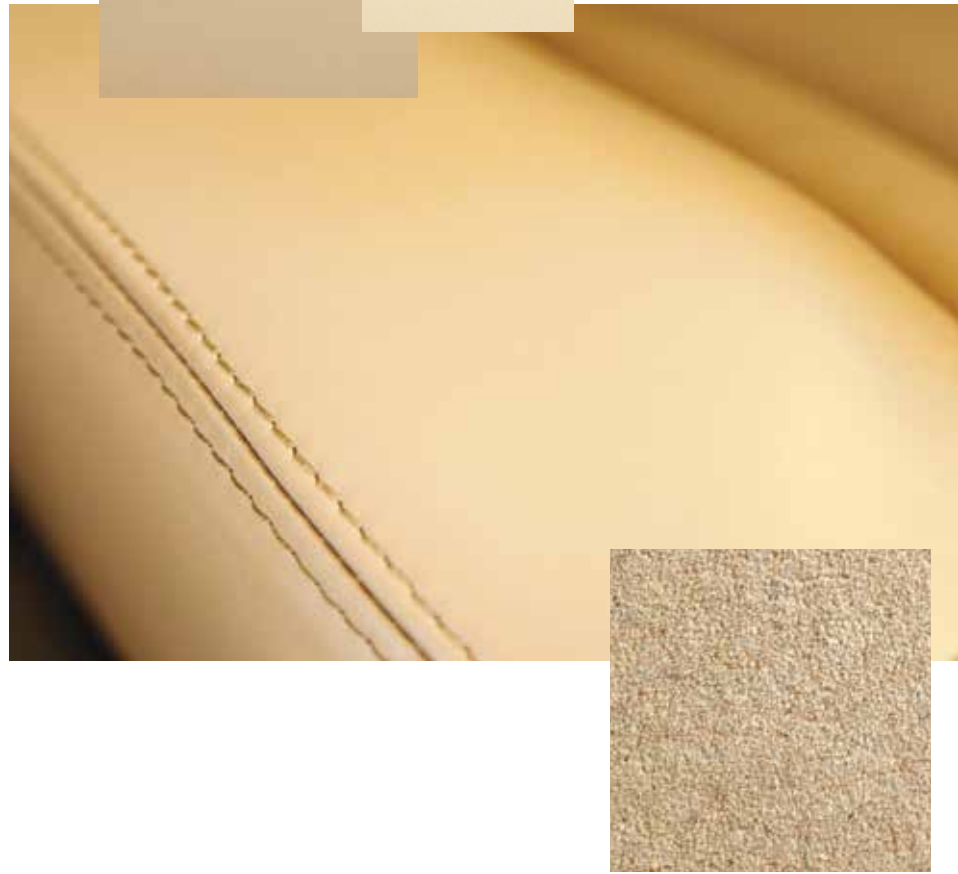




What's The Mission Today?

The Piper Matrix is as comfortable on a remote grass strip as a major metropolitan airport, just like the men and women who own and fly one. Matrix owners are the kind of people who depend on their airplane to help their business succeed during the week, then load it up with friends and gear to head off to the mountains to enjoy what success is really about. Either way, Matrix is up to the mission, with its generous useful load, cavernous cargo area and rugged landing gear.

Mesa Interior



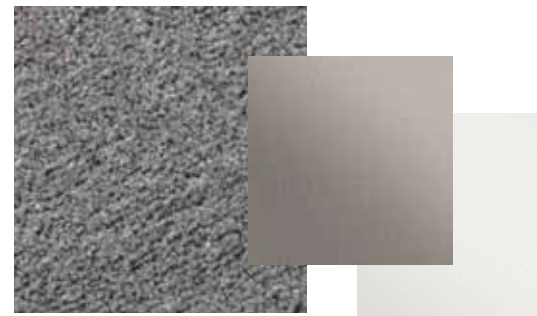
Cabin Class.

If you've never flown in cabin-class comfort, you and your passengers are both in for a treat. From the moment you climb the airstair door, you sense an aircraft that's larger and more substantial, with the most expansive interior of any six-place piston aircraft. Your passengers will have room to stretch out in the comfort of club seating, with seats that fold for easier access and more versatility. Conveniently located cabin baggage storage offers greater storage volume for those bulkier items and is at least 35% larger than most four-place aircraft. A pair of power outlets make the work station live up to its name. When not in use, the workstation can disappear into the side panel for even more room.



Styling

Upgraded Premier Elegance Interior Shown



Summit Interior

The interior is immersed in hand-selected leather and luxurious, but durable carpeting. Select between two color palettes: Mesa and Summit, with a headliner and side panels in complementary colors. Up front, the leather-wrapped cockpit feels more like the flight deck of a business jet, with each control and switch placed for ease of access.

Scan for a 360 degree interactive tour of the Piper Matrix.



piper.com





Safety Up Front.

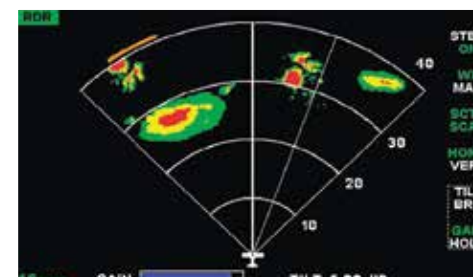
The advanced configuration of the Garmin G1000 flight deck with its integrated GFC 700 flight control system gives you all the information you need to fly safely, securely and effortlessly. The Piper Matrix and Mirage are the only piston aircraft to feature a standard 15" Multi-Function Display (MFD), flanked by dual 10" Primary Flight Displays (PFDs). Data analysis has never been simpler. Increased situational awareness, redundant systems and intuitive controls make the Matrix cockpit the ultimate partnership of performance and technology.



Primary Flight Displays (PFD)
Two high-resolution Primary Flight Displays put the flight instruments in direct line of sight from both left and right seats with no distracting parallax view.



Multi-Function Flight Display (MFD)
In the center of the panel, engine data, charts, traffic, weather, flight plans, menus and more are displayed on the large format, high resolution, 15" Multi-Function Display. Garmin's legendary user-friendly interface makes the MFD simple to navigate and puts a wealth of information at your fingertips.



Weather Monitoring
Matrix offers the unsurpassed optional on-board radar capabilities of the Garmin GWX 68 digital color radar. The GWX 68 easily penetrates and reports back the weather ahead with its 6.5 kilowatts of power. In addition, the GDL 69A provides datalink weather, with NEXRAD radar, winds aloft, METARs, TAFs, lightning, icing and other information available in the U.S., with a subscription to XM WX Satellite Weather.



Garmin GFC 700
The fully integrated flight control system provides exceptional flight automation including a dual AHRS-based system. The system offers top safety features and incomparable performance, seamlessly integrating a flight director, autopilot, automatic trim and yaw damper into the G1000 suite.



Synthetic Vision
The option of Garmin Synthetic Vision Technology takes situational awareness to a new level, regardless of what you can or cannot see out the windshield. Obstacles, terrain, water and airports are graphically depicted drawing from multiple certified databases.

Global Customer Support.

We believe, when you purchase a Piper aircraft, you join our family. That's why we pledge to offer a relationship that extends far beyond the delivery of your new airplane by providing a superior ownership experience. Our team in Vero Beach, Florida works hand in hand with the global Piper network to make your delivery, professional training and support second to none.

If you already own a Piper you know the value that comes along with it. If you are thinking of buying a new Piper, now is the time to learn what it means to become a Piper owner.



With more than 100 sales and service centers around the globe, you can be sure we have the support you need in your area. Scan to find your closest Piper sales or service center.



piper.com

Piper

Specifications

MATRIX | \$939,950**

Standard Equipped List Price

Engine

Turbocharged Lycoming TIO-540-AE2A

Horsepower: 350 hp

Number of Cylinders: 6

TBO: 2,000 hours

Weights

Maximum Takeoff Weight: 4,340 lbs | 1,969 kg

Maximum Ramp Weight: 4,358 lbs | 1,977 kg

Standard Equipped Weight: 3,003 lbs | 1,362 kg

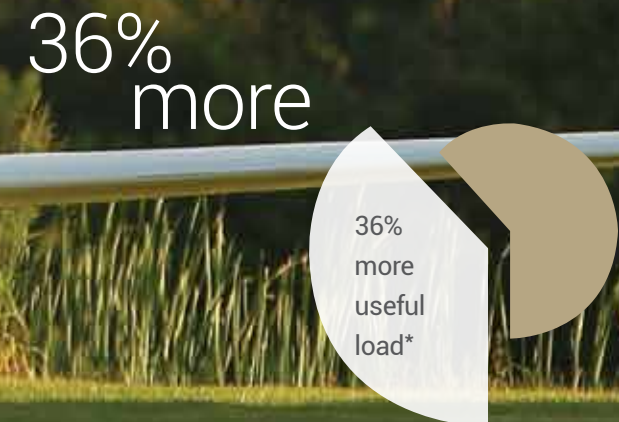
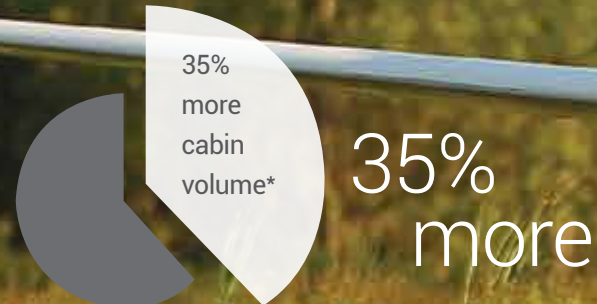
Standard Useful Load: 1,355 lbs | 615 kg

Dimensions

Wing Span 43.0 ft/13.1 m | Length 28.9 ft/8.8 m | Height 11.3 ft/3.4 m

Propeller

Hartzell 3 Blade | Composite | Constant Speed



Standard Equipment

AVIONICS

Garmin G1000 Avionics Suite
Dual 10" PFDs, Single 15" MFD, Dual GIA 63W NAV/COM/GPS, GFC 700 Autopilot, GMC 710 AP Controller, GCU 476 Keypad, Garmin FliteCharts, SafeTaxi, GMA 347 Audio Panel, Dual GDC 74A Air Data Computers, GTX 33 ES Mode Transponder and Stand-by Flight Instruments

OTHER EQUIPMENT

Yaw Damper System | PiperAire Air Conditioning | Hardwired Cockpit Bose A20 Headsets | Leather Interior | Matrix Pilot Initial Training Course

Optional Equipment

AVIONICS EQUIPMENT OPTIONS

- 235: Jeppesen ChartView – \$4,030
(One year subscription to Jeppesen pilot pack)
- 268: GWX-68 Weather Radar – \$41,000
- 269: GDL 69A XM Satellite Radio/Weather – \$10,750
- 295: KTA 870 Traffic Advisory System – \$48,960
- 298: Flight Into Known Icing (FIKI) – \$77,400
- 330: Stormscope WX-500 – \$11,120
- 346: Synthetic Vision – \$17,800
- 450: TAWS-B (Terrain Awareness and Warning System) – \$12,240
- 524: King KR 87 ADF – \$8,050
- 563: King KN 63 DME – \$10,400
- 631: GTX 33 ES Second Digital Transponder – \$10,250

ADDITIONAL OPTIONS

- 363: United Kingdom Lighting Package – \$1,380
- 470: Speed Brakes – \$11,120
- 700: Top Metallic Base Coat – \$6,690
- 710: Bottom Metallic Base Coat – \$6,690
- 715: Optional Matrix Paint Scheme – Quoted Upon Request
- Premier Elegance Interior (Dune or Glacier) – \$2,040
- AMSAFE: AmSafe Aviation Airbag System (crew seats) – \$5,820 (Installed after delivery)
- Additional Special Options – Quoted Upon Request

Maximum Cruise Speed

213 ktas | 395 km/h

Range with 45 Min. Reserve

1,343 nm | 2,487 km

Maximum Approved Altitude

25,000 ft | 7,620 m

Fuel Capacity

Useable:
120 US gal | 454 liters

Takeoff Distance

Ground Roll: 1,087 ft | 331 m
Total Over 50 ft Obstacle:
2,090 ft | 637 m

Landing Distance

Ground Roll: 1,020 ft | 311 m
Total Over 50 ft Obstacle:
1,968 ft | 600 m

* Data compared to closest competitor six-place, single piston aircraft – Source: Conklin & de Decker 2013 Vol 1

** Fly-Away-Factory (F.A.F.) Vero Beach, FL – Dealer delivery and local taxes extra.





Inspired by the legendary Malibu, the Matrix has joined the respected M-Class family as the perfect step-in and step-up product. The Matrix is specifically engineered to offer a seamless transition for pilots of smaller, four-seat aircraft with its industry standard G1000 avionics and a product specific training course for pilots. The Matrix gives you the lifestyle you want, freedom to go where you want, when you want and the capability to carry more people and baggage.

No matter what you fly now, the Piper Matrix will take you to another level. It's not just about speed, range and capability, it's the experience of flying an aircraft quite literally like no other. And, just like every Piper aircraft, the Matrix is about the pure joy of flight.



On Location

The Aerodrome
Vero Beach, FL



Piper Aircraft, Inc. reserves the right to make changes, including, but not limited to, changes in specifications, materials, equipment and/or prices at any time without prior notice. It is the responsibility of the pilot to conduct all operations in accordance with the approved Pilot's Operating Handbook, which is the only official source of data.
© 2014 Piper Aircraft, Inc.


Piper[®]

Piper Aircraft, Inc. | 2926 Piper Drive | Vero Beach | FL | 32960 | 772.299.2403

piper.com | 1.866.FLY.PIPER