

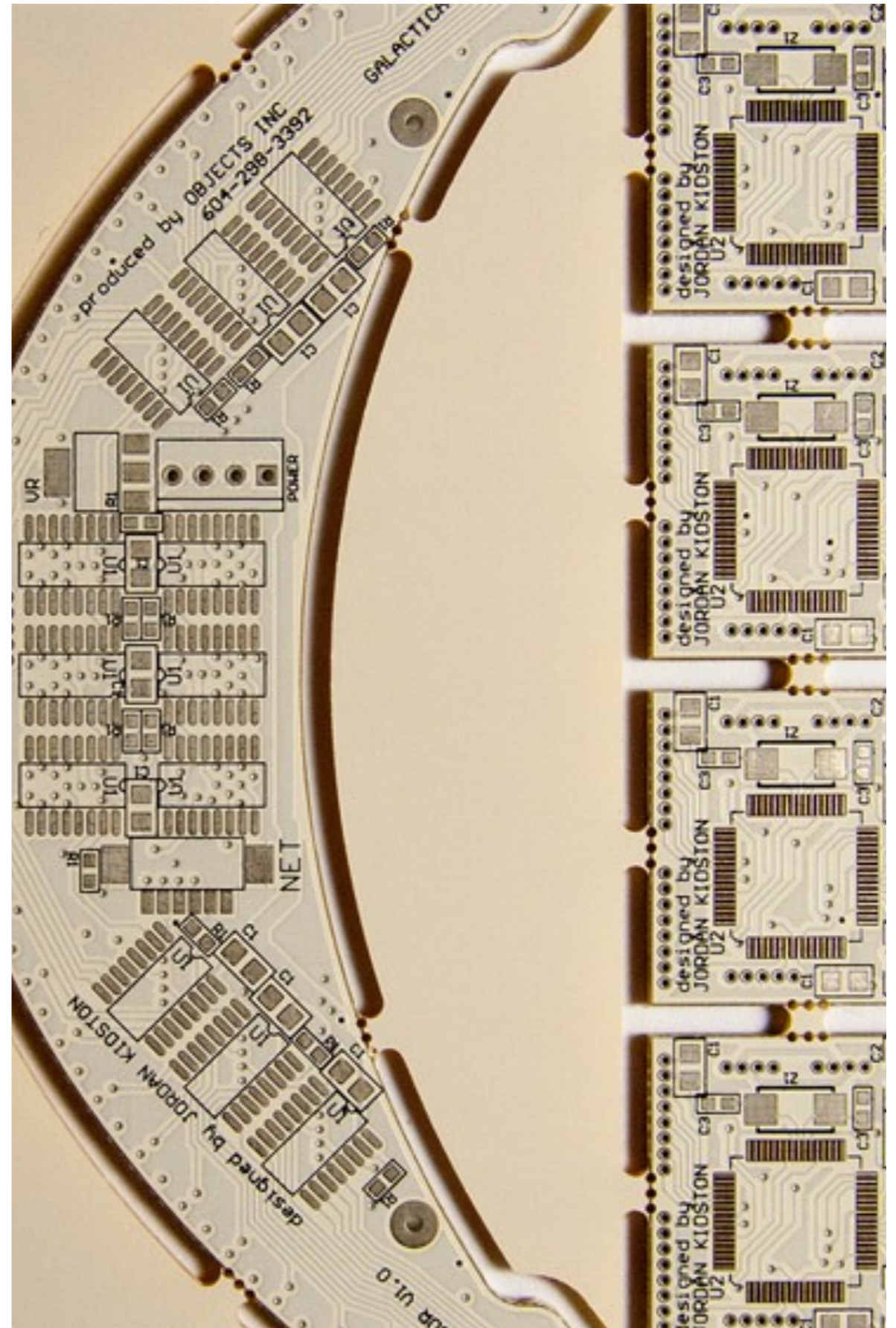
# 10 Benefits of Immersion White Tin Circuit Board Coatings

It seems that everyone is searching for environmentally sustainable alternatives; printed circuit board manufacturers included.

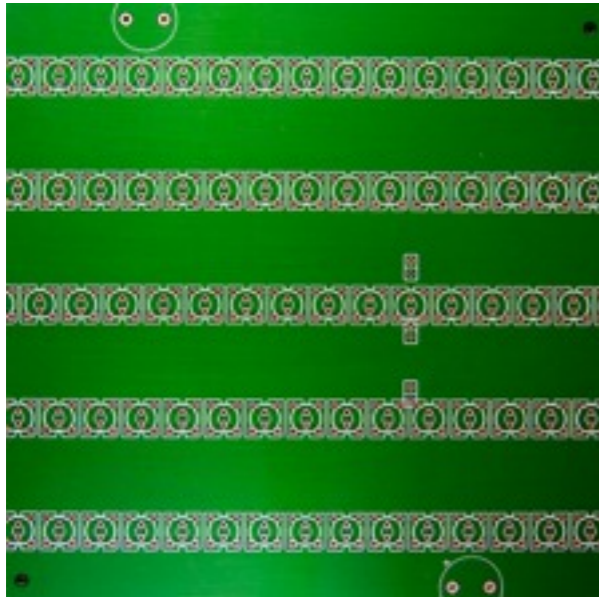
One such alternative to the industry-standard lead-based hot air leveling is (lead-free)

**Immersion White Tin.**

Please feel free to share, as long as you provide credit and link to Omni Circuit Boards at [www.omnicircuitboards.com](http://www.omnicircuitboards.com) or [www.omnigraph.com](http://www.omnigraph.com).



Copyright SD Jackson Photo. All rights reserved.



---

# Immersion White Tin Quick Facts

Information courtesy  
of Omni Circuit Boards.

Please feel free to share, as  
long as you provide credit and  
link to Omni Circuit Boards at  
[www.omnicircuitboards.com](http://www.omnicircuitboards.com)  
or [www.omnigraph.com](http://www.omnigraph.com).

## Immersion White Tin Quick Facts:

- ✓ Requires less power and water consumption than traditional processes
- ✓ Has proven to be excellent for fine pitch applications
- ✓ Can withstand multiple heat / assembly cycles
- ✓ Rework can be easily accomplished with a no-clean solder flux or paste allowing for excellent soldering of the surface
- ✓ Retains its solderability in excess of one year
- ✓ Produces a uniform flat and dense solderable surface especially desirable for surface mount components
- ✓ Provides a uniform coating over the total copper area
- ✓ Exhibits inherent lubricant properties which are beneficial in the insertion process of press-fit connectors
- ✓ Is compatible with all assembly fluxes and solder pastes
- ✓ Is a cost-effective coating

---

## Immersion White Tin has proven to be a viable, lead-free coating.

Deploying this process at Omni Circuits helps our family make the world just a little bit better, one circuit board at a time. When your project favors a lead-free final coating, please contact [www.omnicircuitboards.com](http://www.omnicircuitboards.com). *As a bonus, you'll find our quoting process unbelievably simple.*