

Future Facilities Limited 6SigmaDC Integration



Future Facilities, Ltd 6SigmaDC software, which is a "Virtual Facility" data center modeling environment, is seamlessly integrated with RF Code's wire-free environmental monitoring solution. The integrated solution is the first to combine wire-free real-time monitoring and computational fluid dynamics (CFD) simulation tools.



Future Facilities Overview

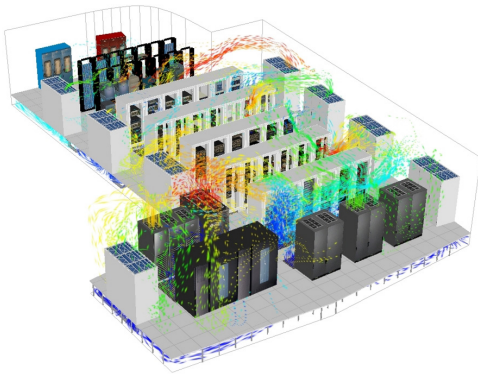
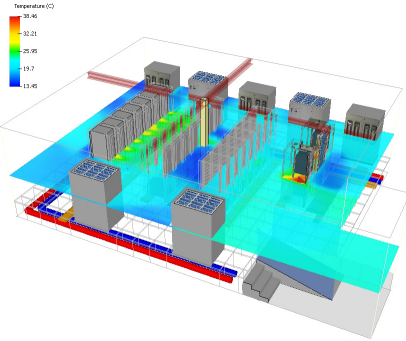
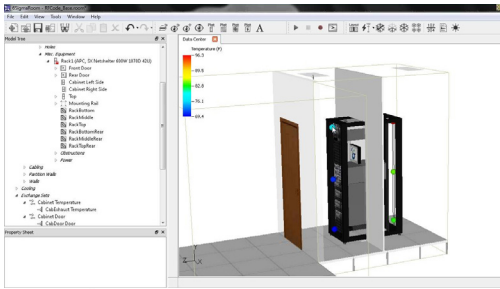
Future Facilities Limited is dedicated to addressing problems faced by modern Mission Critical Facilities. The company's founders are experts in the design and application of Computational Fluid Dynamics (CFD) software for the data center industry. The Future Facilities 6SigmaDC software suite delivers a powerful toolset to meet the challenges of the design and operation phases of data centers and IT equipment. 6SigmaDC allows creation of a detailed 3-dimensional Virtual Facility© which is a mathematical representation of the data center at any point in time. Using the Virtual Facility, power usage, equipment configurations, thermal behaviors and other important design variables can be accurately modeled and evaluated before physical implementation. The custom-built Virtual Facility provides an accurate and holistic perspective, allowing the data center operator to track past events, investigate the present status and predict the impact of future changes, with no risk to the real facility. This results in facilities which can be deployed and maintained with full confidence of operational integrity.

Integration Details

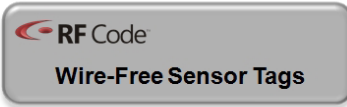
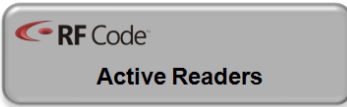
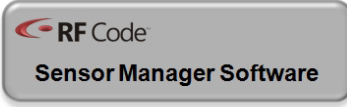
6SigmaDC is integrated with RF Code's Sensor Manager software using the Sensor Manager API specification and the 6SigmaDC XML based Exchange Data Import format. This enables the publishing of sets of related sensor data (current and historical) as well as metadata for those sensors. At user configurable intervals, 6SigmaDC will connect to Sensor Manager via the HTTP protocol and retrieve the sets of sensor data. Once this data is received, 6SigmaDC utilizes the RF Code sensor information when modeling and visualizing the behaviors in the Virtual Facility.

The integration of wire-free real-time monitoring and simulation is the ultimate data center management of data center management solutions. RF Code and 6SigmaDC together offer a complete view of the past, present and future states of the data center environment in a unified system that will alert the data center manager to existing environmental or performance problems and help him steer clear of potential future problems.

Product Screenshots



Integrated Solution Components



Partner Contact Information

Future Facilities Limited
1 Salamanca Street
London
SE1 7HX
United Kingdom

Future Facilities Inc.
2025 Gateway Place, Suite 110
San Jose, CA 95110
USA

Website:

- www.futurefacilities.com

Phone:

- London: +44 (0) 20 7840 9540
- London: +44 (0) 20 7091 7171 (Fax)
- San Jose: 408.436.7701
- San Jose: 408.436.7705

Email:

- Sales: info@futurefacilities.com

RF CODE

9229 Waterford Centre Blvd. ♦ Suite 500
Austin, TX 78758

Tel: 512.439.2200 ♦ Fax: 512.439.2199
sales@rfcode.com ♦ <http://www.rfcode.com>

Copyright © 2015 RF Code, Inc. All Rights Reserved. RF Code and the RF Code logo are either registered trademarks or trademarks of RF Code Incorporated in the United States and/or other countries. All other trademarks are the property of their respective owners.