

# MAYA Datacenter Clarity LC Integration with RF Code



Datacenter Clarity LC's integration with RF Code enables customers to reduce operational costs and make better planning decisions by providing a fully automated inventory data feed with accurate and easily verifiable asset location within the data center. By integrating Datacenter Clarity LC's world leading lifecycle management solution and RF Code's wireless environmental monitoring sensors, customers are able to eliminate over-provisioning and get clarity and visibility in a high definition 3D virtual environment to avoid issues related to temperature, humidity, fluid detection, air pressure, and rack level power usage.



## MAYA Overview

MAYA is a leading developer and provider of CAE and DCIM solutions, author of a variety of software products within the Siemens PLM portfolio. MAYA's solutions are deployed worldwide across a wide array of industries to increase efficiency and deliver high quality performance insight.

## Integration Details

Datacenter Clarity LC provides the tools to accurately and efficiently manage data center infrastructure, with a complete, real-time picture of asset attributes in 3D, and powerful tools to determine the most efficient data center configuration possible. The integration at the Zone Manager level between RF Code and Datacenter Clarity LC allows a seamless way to integrate best-in-class wireless sensors into a 3D centric virtual data center environment. Together, Datacenter Clarity LC and RF Code's wireless sensors provide an equivalent to the "internet of things" within the data center. Both real-time environmental monitoring data and asset location data can be seamlessly integrated from RF Code sensors into Datacenter Clarity LC.

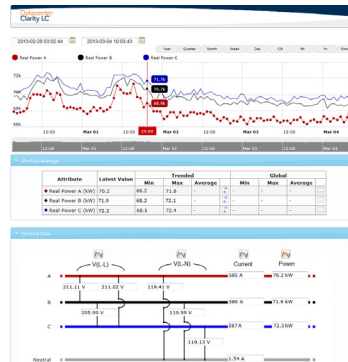
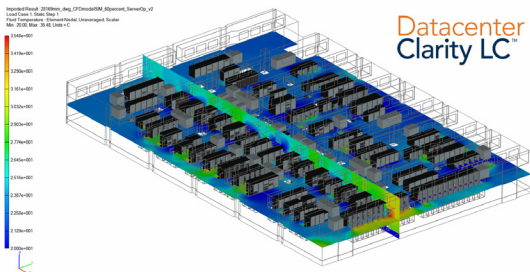
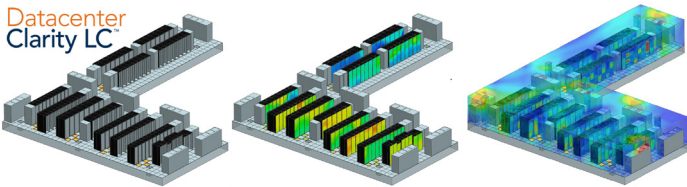
With our integration to RF Code, the data center decision makers will get an automated asset management framework, environmental monitoring and energy consumption in order to:

- Get clear insight into all your mission critical and interdependent systems
- Prevent problems by properly forecasting capacity issues before they happen
- Troubleshoot unforeseen events with access to real-time data
- Optimize your assets for greater efficiency and reduced cooling costs
- Support standard data center change management tasks and processes

# Integration Video



## Product Screenshots

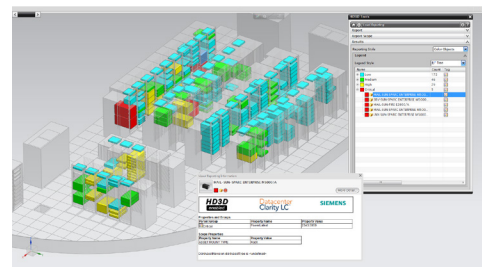


### Website:

- <http://datacenter.mayahtt.com>

### Contact iTRACS:

- Email: [info@mayahtt.com](mailto:info@mayahtt.com)
- Phone: +1 (800) 343 6292



**RF CODE**

9229 Waterford Centre Blvd. ♦ Suite 500  
Austin, TX 78758

Tel: 512.439.2200 ♦ Fax: 512.439.2199  
sales@rfcode.com ♦ <http://www.rfcode.com>

Copyright © 2015 RF Code, Inc. All Rights Reserved. RF Code and the RF Code logo are either registered trademarks or trademarks of RF Code Incorporated in the United States and/or other countries. All other trademarks are the property of their respective owners.