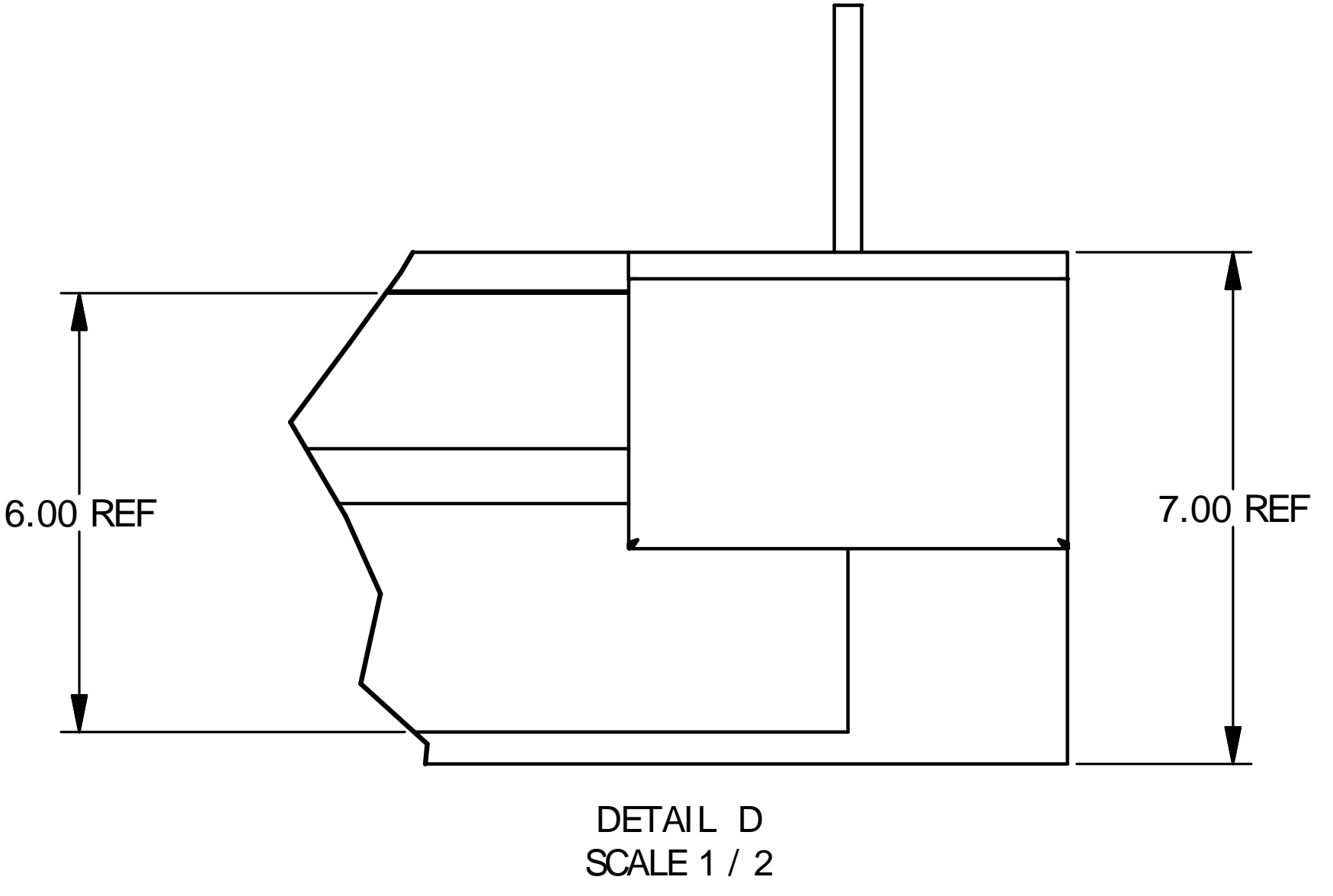


NOTES:

1. IMPRESSION STAMP DATE, SERIAL NO., ASSEMBLY NO. & OPENING NO.
2. APPROXIMATE WEIGHT OF EACH STOP LOG IS: 65 LBS, ASSEMBLY: 1014 LBS.
3. TOLERANCE MUST BE MAINTAINED AT INSTALLATION.
4. ALL TOLERANCES NON-ACCUMULATIVE.
5. SEAL SURFACE MUST BE SMOOTH, UNINTERRUPTED BY STEPS GREATER THAN .015 & FREE OF CRACKS FINISH LAY TO BE PARALLEL TO SEAL.
6. BRUSH-OFF BLAST CLEAN JAMBS, SILL & SHROUDS PER SSPC-SP7. PAINT FRAME ONE COAT: SHERWIN-WILLIAMS PRIMER # E61-R-26 OR EQUIVALENT.
7. LOGS TO BE FLAT 1/8 OVER ENTIRE LENGTH.
8. FOR INSTALLATION & OPERATION INSTRUCTION SEE PRESRAY MANUAL IM-CGSL-10XXX-XX.
9. FRAME & SILL TO BE STRAIGHT WITHIN 1/8 OVER ENTIRE LENGTH.
10. STOP LOGS TO BE SOLVENT CLEANED AT ASSEMBLY. JAMB COVERS TO BE ABRASIVE CLEANED AT ASSEMBLY AS REQUIRED.
11. APPLY 1/8" BEAD OF RTV SEALANT IN SEAL RETAINER GROOVE AT ASSY.
12. BARRIER DESIGNED FOR 72 INCH SEATING HEAD OF WATER.



THIS BLOCK MUST BE COMPLETED, SIGNED AND THE DRAWING RETURNED TO PRESRAY CORPORATION PRIOR TO FURTHER ACTION.

NO EXCEPTION TAKEN - RELEASE FOR PRODUCTION

REVISE AS INDICATED - RELEASE FOR PRODUCTION

REVISE AND RESUBMIT - DO NOT RELEASE FOR PRODUCTION

A RECORD COPY WILL BE PROVIDED BY PRESRAY FOLLOWING DETAIL GENERATION, CHECKING AND RELEASE TO PRODUCTION.

PRESRAY IS NOT RESPONSIBLE FOR OPENING SIZE VERIFICATION OR ANY OTHER ON SITE DESIGN VERIFICATION.

VARIATIONS FROM QUOTATION WILL BE SUBJECT TO PRICE CHANGE

BY _____ COMPANY _____

PRINT NAME _____ DATE _____

OVERNIGHT: PRESRAY CORPORATION PRESRAY CORPORATION
 32 NELSON HILL RD. P.O. BOX 200
 WASSAIC, NY 12592 WASSAIC, NY 12592
 (845) 373-9300 (845) 373-9300

| QTY | REV | DESCRIPTION | MATERIAL |
|-----|-----|-------------|------------------------------|
| 1 | 18 | Y-HB-FOAM | ADHESIVE TAPE |
| 1 | 17 | AL | DATA PLATE |
| 160 | 16 | SS | FLAT HD THRD CUT SCREW |
| 4 | 15 | ZPS | TRUSS HD SCREW |
| 2 | 14 | STL | CLAMP ASSY |
| 20 | 13 | ZPS | 3/8 FLAT HD EXPANSION ANCHOR |
| 28 | 12 | SS | HEX NUT |
| 24 | 11 | ALUM | JAMB CLIP |
| 28 | 10 | SS | FLAT WASHER |
| 12 | 09 | EPDM | LOG SEAL |
| 2 | 08 | NEOP | JAMB SEAL |
| 2 | 07 | STL | SHROUD COVER |
| 12 | 06 | AL | LOG SEAL RETAINER |
| 2 | 05 | AL | JAMB SEAL RETAINER |
| 1 | 04 | STL | SILL PLATE |
| 1 | 03 | STL | LEFT JAMB WELDMENT |
| 1 | 02 | STL | RIGHT JAMB WELDMENT |
| 12 | 01 | AL | STOP LOG |

| | | | | | |
|------------------------------|----------------|--------------------------|-------|------|-----------|
| DATE | APVD | TOLERANCE UNLESS NOTED | SCALE | DR | 3/22/2007 |
| BREAK ALL SHARP CORNERS 1/32 | | FRACTIONS ± 1/32 | | CHK | |
| DO NOT SCALE DRAWING | ©PRESRAY CORP. | 3 DECIMAL PLACES ± 0.001 | | APPD | |
| | | 2 DECIMAL PLACES ± 0.005 | | | |
| | | 1 DECIMAL PLACE ± 0.015 | | | |

PR30881 X 102.00
 PR19616 X 72.00
 CGSL-10XXX-XX-07 DETAIL
 CGSL-10XXX-XX-06 DETAIL
 CGSL-10XXX-XX-05 DETAIL
 CGSL-10XXX-XX-04 DETAIL
 CGSL-10XXX-XX-03 DETAIL
 CGSL-10XXX-XX-02 DETAIL

CGSL-10XXX-XX
 SHEET 1 OF 1

THE PRESRAY CORP.
 WASSAIC, NEW YORK
 STOP LOGS

CGSL-10XXX-XX
 SHEET 1 OF 1