



# Software Installation Guide

Version 10.0



**Page intentionally left blank**



<b>INTRODUCTION TO IQMFP</b>	<b>5</b>
<hr/>	
<b>IQMFP SERVER INSTALLATION</b>	<b>6</b>
<hr/>	
PREREQUISITES	6
GETTING STARTED	6
INSTALL USING SQL SERVER 2005 EXPRESS EDITION	9
INSTALL USING EXISTING SQL SERVER	12
IQMFP SERVER INSTALLATION NOTES	16
POST IQMFP SERVER INSTALLATION	17
<hr/>	
<b>IQMFP CLIENT INSTALLATION</b>	<b>18</b>
<hr/>	
PREREQUISITES	18
GETTING STARTED	19
NETWORK SERVER INSTALLATION METHOD	19
CD INSTALLATION METHOD	20

Page intentionally left blank

### Introduction to IQmfp

IQmfp is a simple electronic filing system for select models of HP LaserJet MFPs, HP Scanjet workgroup scanners and HP Digital Senders. Easy to use and install, the IQmfp document management solution is integrated with the MFP front panel and allows documents to be scanned into a SQL database for indexing and OCR processing for full-text search. There are connectors for storage and retrieval of MS Office documents and WordPerfect files, as well as MS Outlook email and attachments. The Windows Explorer connector allows indexing and retrieval of a wide range of electronic files, and IQmfp can be configured for easy integration with the HP SDSS software included with Scanjet workgroup series scanners.

Please contact us below for technical support and/or troubleshooting:

IQmfp Support

(407) 215-1291

[iqmfpsupport@informasoftware.com](mailto:iqmfpsupport@informasoftware.com)

<http://www.informasoftware.com/support>

## IQmfp Server Installation

### *Prerequisites*

***NOTE:*** Server refers to the IQmfp host computer, not necessarily a traditional server.

Before you install IQmfp, ensure that your host system has the minimum system installation requirements below:

- CD ROM Drive, and 80 GB Hard Drive.
- PC configured with P4 processor or higher, 1 GB RAM.
- Microsoft Windows XP SP2 or Microsoft Windows Server 2003 (non domain controller).
- Microsoft .Net 2.0 Framework (this will be installed for you if it has not been previously installed).

### *Getting Started*

***NOTE:*** Server refers to the IQmfp host computer, not necessarily a traditional server.

1. First, place your IQmfp Installation CD in the server's CD ROM drive.
2. The IQmfp autorun window launches as demonstrated on the next page in **Figure 1**. Click "Install IQmfp" as highlighted in red on the autorun menu, or browse the CD and double-click on setup.exe, and follow the procedures in the installation wizard.

## IQmfp Software Installation Guide 10.0

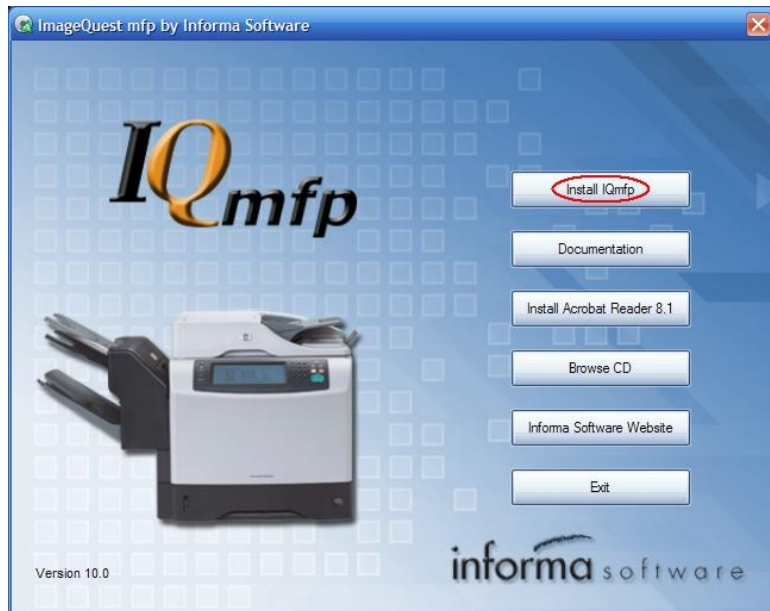


Figure 1

3. Next, you will be asked if you wish to reboot as illustrated below in **Figure 2**. Click “Yes” to proceed.

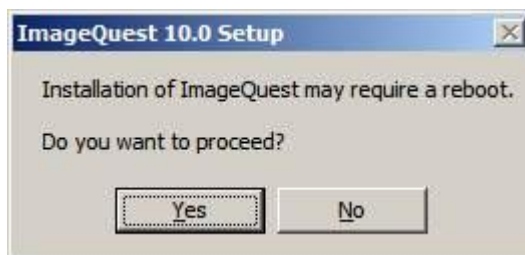


Figure 2

4. The window “Welcome to the ImageQuest 10.0 Setup Wizard” will appear as shown in **Figure 3** on the following page. Read the contents closely for your information and click “Next” to proceed.

## IQmfp Software Installation Guide 10.0



Figure 3

5. Next, you will come to the “License Agreement” window as displayed below in **Figure 4**. Read the terms provided carefully and click “I Agree” to proceed.

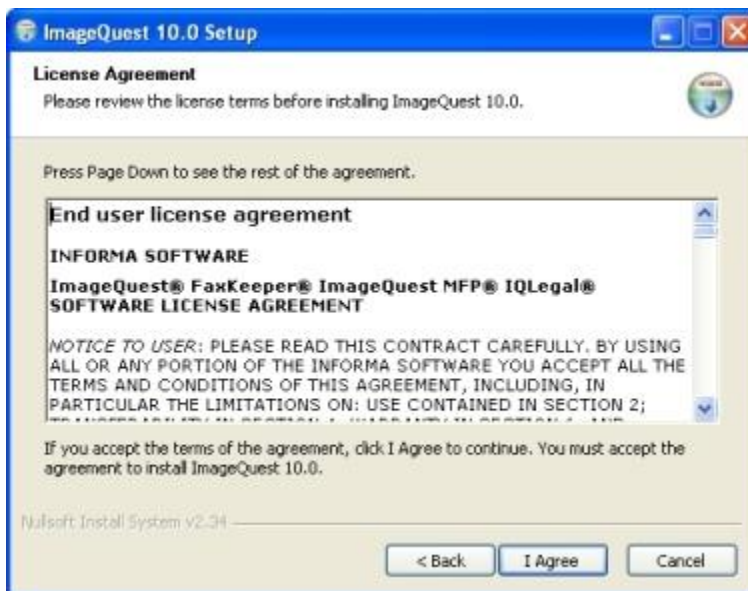


Figure 4



6. You will see the window, “Installation Type,” as illustrated below in **Figure 5**. Select “ImageQuest Server,” and then click “Next”.

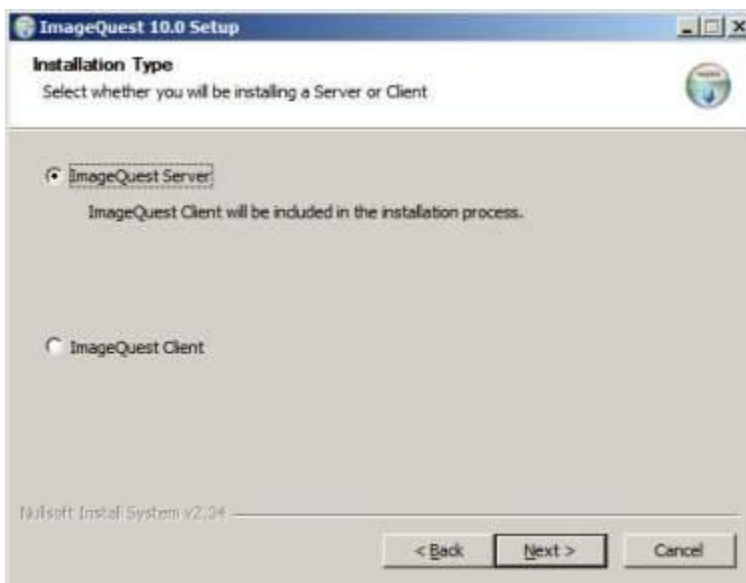


Figure 5

### *Install using SQL Server 2005 Express Edition*

7. Once you choose your installation type, you will then be asked to choose the “Setup Type” as displayed on the following page in **Figure 6**. If you don’t have an Existing SQL Server, you will need to choose Install SQL Server 2005 Express Edition and click “Next”.

***NOTE:*** *If you will be using an Existing SQL Server, skip to procedure 8 beginning on pg. 12 and review closely as shown in Figure 9.*



Figure 6

Be sure to confirm your settings as outlined in the window, “Confirm Settings” in **Figure 7** below and click “Install”.



Figure 7

## IQmfp Software Installation Guide 10.0

Once you click “Install” you will come to the window, “Microsoft SQL Server 2005 Setup” as illustrated in **Figure 8**. Installation of SQL Server may take 10 to 15 minutes to complete.



Figure 8

***Install using Existing SQL Server***

8. If you are using an Existing SQL Server database, then select Existing SQL Server, and click “Next” as shown in **Figure 9** below. Follow and apply the remaining server install procedures to complete this selected “Setup Type”.



Figure 9

See the window, “Database Server” as displayed in **Figure 10** where you will specify your database server name to use for ImageQuest. Use the default Login ID “sa” and type in and confirm your existing administrator password. Click “Next”.

***NOTE: When installing to an Existing SQL Server, any login that has appropriate permissions can create or manage a database on the server. The SQL Server needs to be configured for Mixed Mode authentication.***

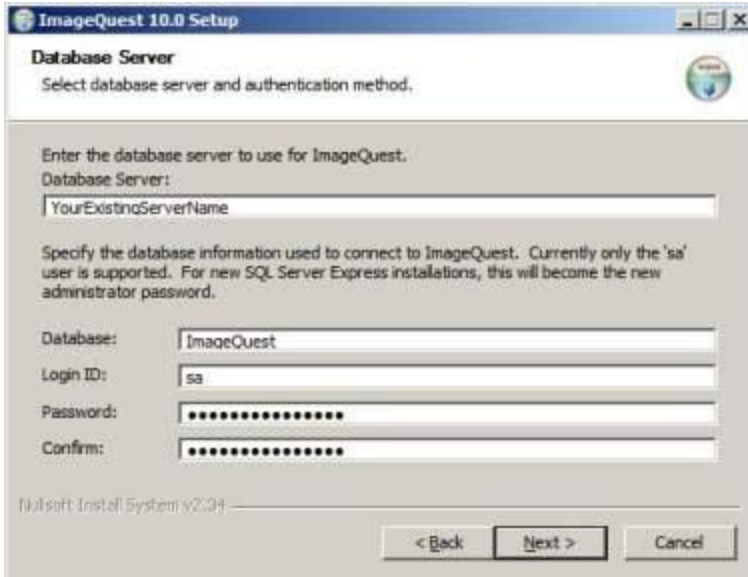


Figure 10

Be sure to confirm your settings as outlined in the window, “Confirm Settings,” **Figure 11**. Click “Install” if correct.

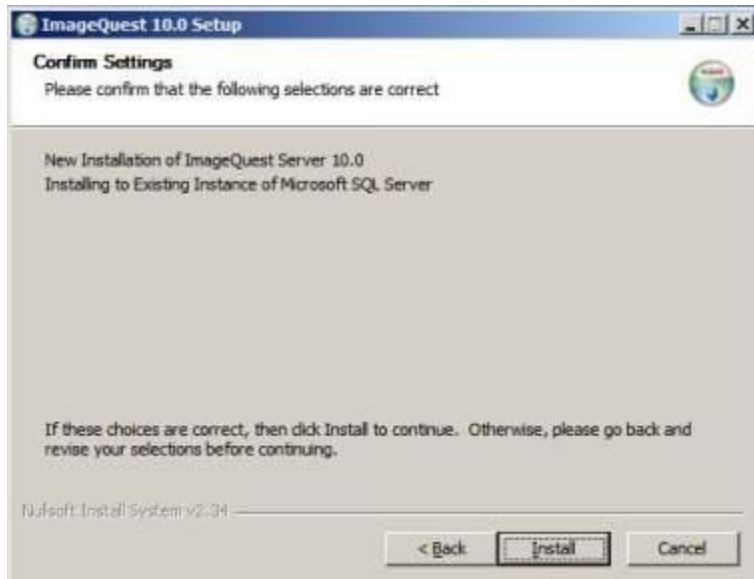


Figure 11

9. After clicking “Install”, the “Installing ImageQuest” window will appear. See **Figure 12**.

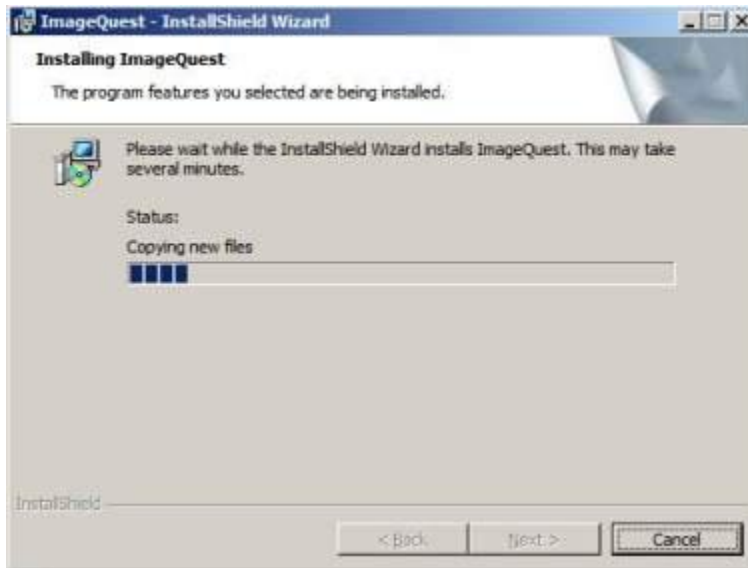


Figure 12

10. The window, “Installation Complete,” will appear once your ImageQuest Server Installation finishes as illustrated on the next page in **Figure 13**. Click “Next” to continue.

## IQmfp Software Installation Guide 10.0

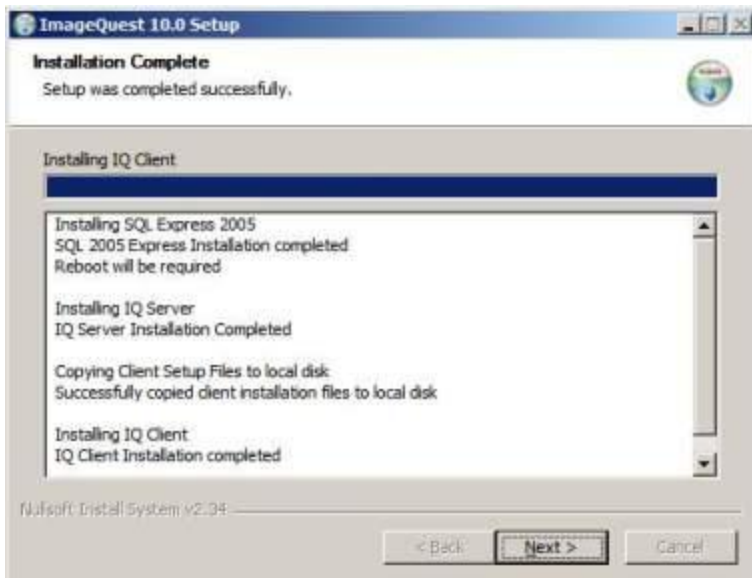


Figure 13

11. CONGRATULATIONS! Your IQmfp Server is now installed and you may click “Finish” as displayed below in **Figure 14**.



Figure 14

***IQmfp Server Installation Notes***

**Note:** If you chose to *Install SQL Server 2005 Express Edition*, you will be forced to reboot the server as illustrated in **Figure 15** after the installation has completed. Click “OK” to reboot.



Figure 15

**Note:** After *IQmfp Server* has been installed, the client installation can be launched from the installation CD or from the network by browsing to: **C:\Program Files\Informa**

**Software\ImageQuest\ClientSetup\iqclientsetup.exe;**

**Note:** TCP Port 32751 and UDP Port 2112 must be opened on the server if the Windows Firewall is enabled.

**Note:** A mail server address (i.e. SMTP server) needs to be setup manually after the server installation if email notifications are to be used when routing documents. The file to be modified is located on the server in the following directory: **C:\Program Files\Informa Software\ImageQuest\WebServices\Web.config.**

**Note:** For email notifications to work properly, the IQmfp server must be allowed to relay email through the SMTP server. Contact your network administrator for assistance.

**Note:** Contact **Technical Support** at Informa Software for troubleshooting concerning your *IQmfp Server* Installation at (407) 215-1291 or email [iqmfpsupport@informasoftware.com](mailto:iqmfpsupport@informasoftware.com).

**Note:** For more information see our website at <http://www.informasoftware.com/support>.



*Post IQmfp Server Installation*

1. You may now access your Informa Software, *IQadministrator* and *IQdesktop* programs from your Start Menu as demonstrated below in Figure 16. Click *IQadministrator*.

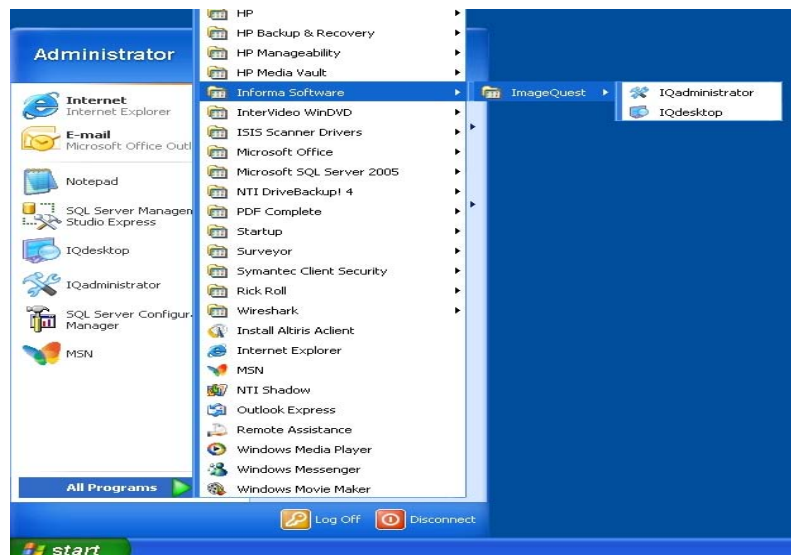


Figure 16

2. The first time you launch *IQadministrator*, you will see the “Set Administrator Password” dialog box. Establish and confirm your Administrator user password as illustrated below in Figure 17.



Figure 17

### IQmfp Client Installation

#### *Prerequisites*

Before you install your IQmfp Client, ensure that the client PC has the minimum prerequisites below:

- The IQmfp Server installation must have been completed prior to installing IQmfp Client.
- The client PC must be running Windows XP SP2 or Windows Vista.
- The client PC should be configured with at least a P4 Processor and 1GB RAM.
- The user logged into the workstation to perform this setup must have local administrator rights on the PC.
- Adobe Acrobat Reader version 6.0 or higher is required to view documents from the client workstations.
- Web Clients require Internet Explorer 6 or higher.
- Corel WordPerfect X3 is required for the IQ WordPerfect Connector.
- Microsoft Office 2003 or 2007 is required for the IQ Office Connector.
- The Microsoft Office applications (Word, Excel, Outlook) must have the .NET Programmability Support Tool installed in order to use the ImageQuest Office Add-in functionality. This additional Office tool can only be added after .NET 2.0 Framework has been installed on the client workstation and is added through Add or Remove Programs. The Microsoft .NET Framework will be added during the IQmfp Client installation if it was not installed previously. A reboot may be required.

### *Getting Started*

You may install the IQmfp Client using one of the following methods:

- From the ClientSetup share on the IQmfp server
- From the IQmfp Installation CD

### *Network Server Installation Method*

1. From your client PC, go to the Start menu and click “Run.” Type in [\\yourservername\clientsetup](http://\\yourservername\clientsetup) and click “OK”. **NOTE:** To find yourservername, launch the IQdesktop on the IQmfp server – the server name will be displayed in the status bar at the bottom of the IQdesktop screen.
2. Next, you will be directed to the window, “iqclientsetup.exe” as illustrated below in **Figure 18**. Double click the icon to launch the IQmfp Client Setup. Please see **pages 25 – 30** for next steps.

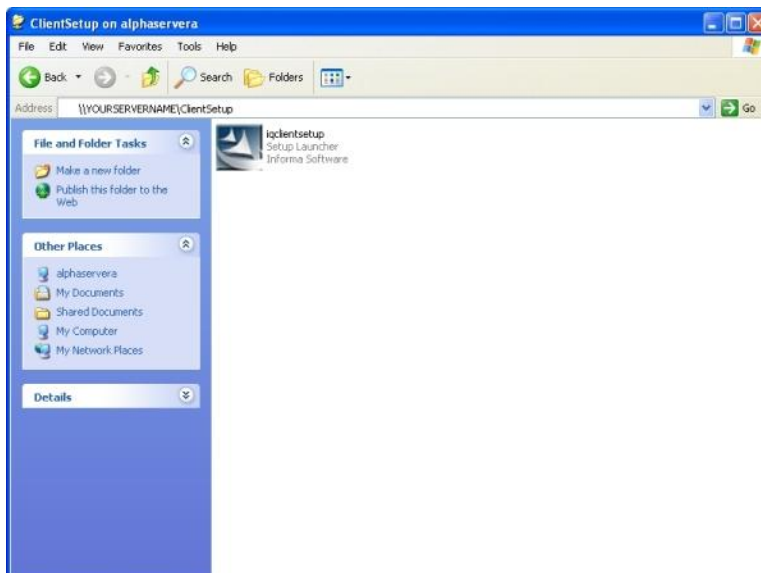


Figure 18

### *CD Installation Method*

1. First, insert your IQmfp CD in the client PC CD ROM drive.
2. The IQmfp autorun window launches as demonstrated below in **Figure 19**. Click “Install IQmfp” as highlighted in red on the autorun menu, or browse the CD and double-click on setup.exe, and follow the procedures in the installation wizard.



Figure 19

3. You will be directed to the window, “ImageQuest 10.0 Setup”, as seen in **Figure 20** on the next page.



Figure 20

Click "Yes" to proceed.

4. Next, you will be directed to the window, "Welcome to the ImageQuest 10.0 Setup Wizard" where you will be guided through installation. See **Figure 21**. Click "Next" to proceed.



Figure 21

5. Then, you will come to the window, "License Agreement." Prior to installing the IQmfp Client, it is necessary that you read the license terms carefully as shown in **Figure 22**. If you agree with the terms provided above, then click "I Agree" to continue with the installation process.

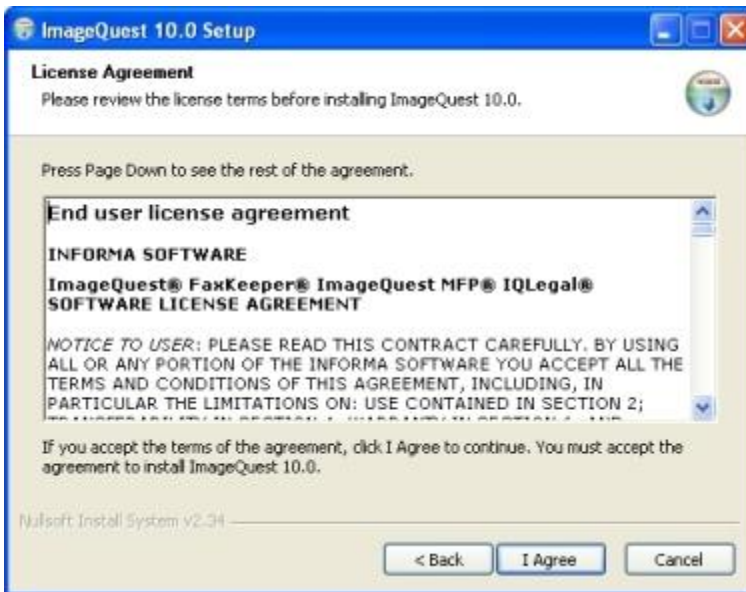


Figure 22

6. Now you will reach the next window, "Installation Type." Select "ImageQuest Client". See Figure 23 on the following page and click "Next".

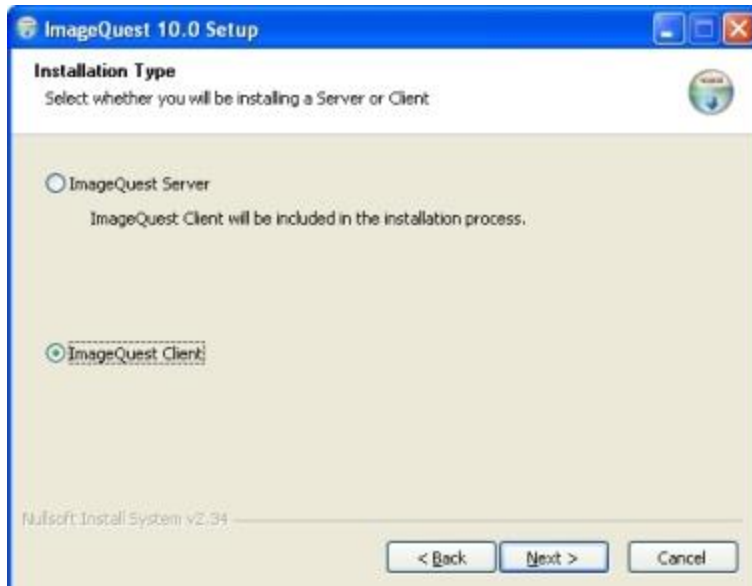


Figure 23

7. Read the contents in the window, “Confirm Settings,” as shown in Figure 24 and click “Install”.

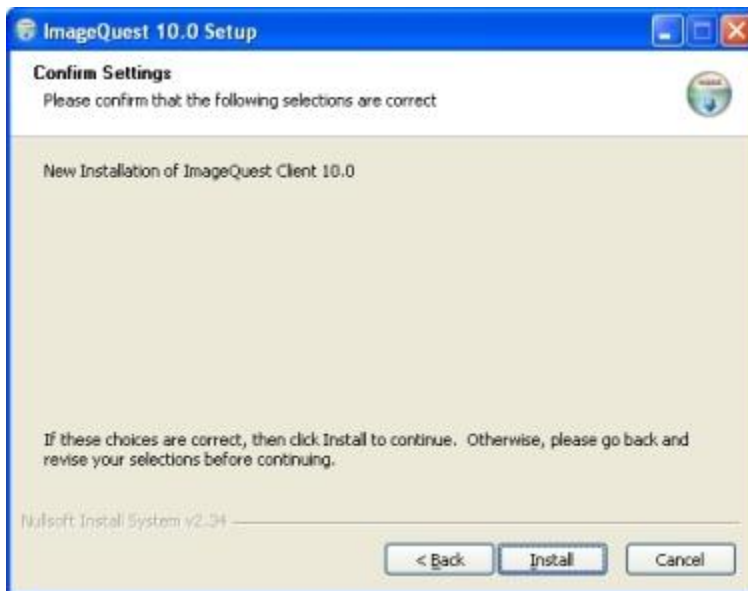


Figure 24

8. See the window, “Installing,” as the installation is processing as shown in **Figure 25** below.

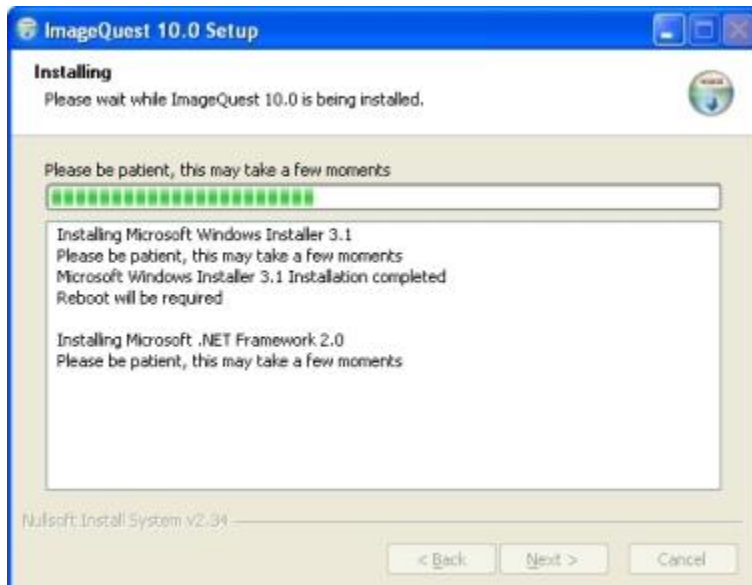


Figure 25

**Note:** If your system already has the software prerequisite Microsoft .NET Framework 2.0, then your wait time for installation will only take a few moments.

**Note:** If your system does not already have Microsoft .NET Framework 2.0, then be patient as your wait time for installation may take longer.



9. You will be directed to the window, “Welcome to the InstallShield Wizard for IQ Client,” once the installation process is complete as shown below in **Figure 26**. Click “Next”.

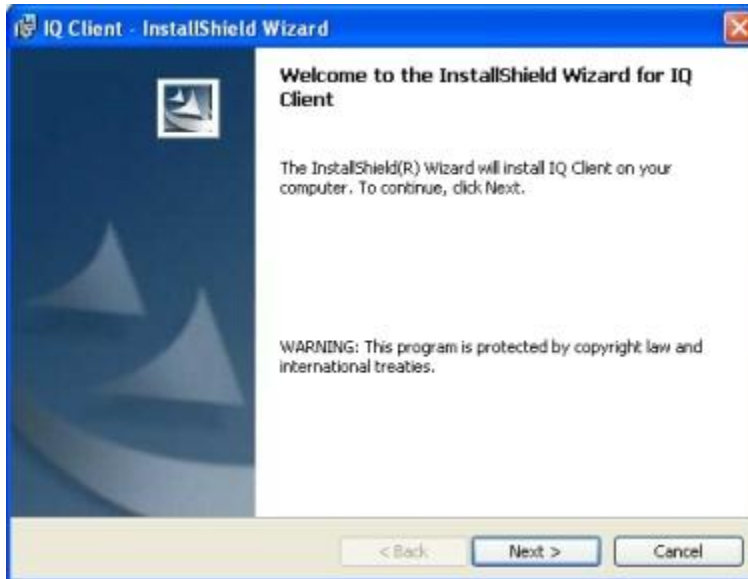


Figure 26

10. You will now find the window, “License Agreement,” as shown on the next page in **Figure 27**. Read the terms and select “I accept the terms in the license agreement.” Click “Next”.



Figure 27

11. Select your IQ Client, “Setup Type:” a) “Complete”; or, b) “Custom” as shown below in **Figure 28** to specify your program features.



Figure 28

Before you click “Next,” closely examine the purpose and functions available in the “Custom Setup” type in **Figure 29** below.

- a) If you select the “Custom Setup” type, you have the option to choose specific components or features. The “IQ Desktop” feature is automatically installed. The other features can be selected and installed using the dropdown arrow to the right of the red “X”. As you choose other features, notice its [Feature Description](#) to the right.

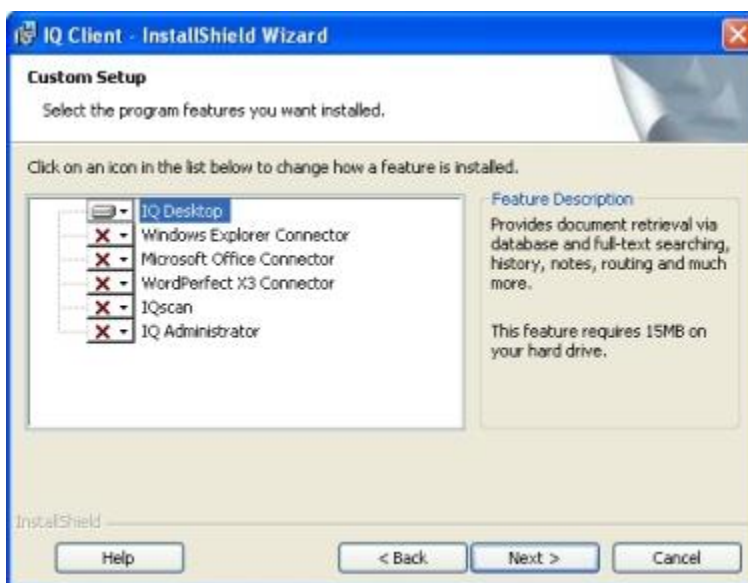


Figure 29

Once you select the features and the method of installation that applies to you, click “Next”. Click “Install” as shown in **Figure 30** on the following page.

- b) If you select the “Complete” setup type, then you will immediately bypass all feature options and come to the window, “Ready to Install the Program,” as shown below in **Figure 30**. Click “Install”.

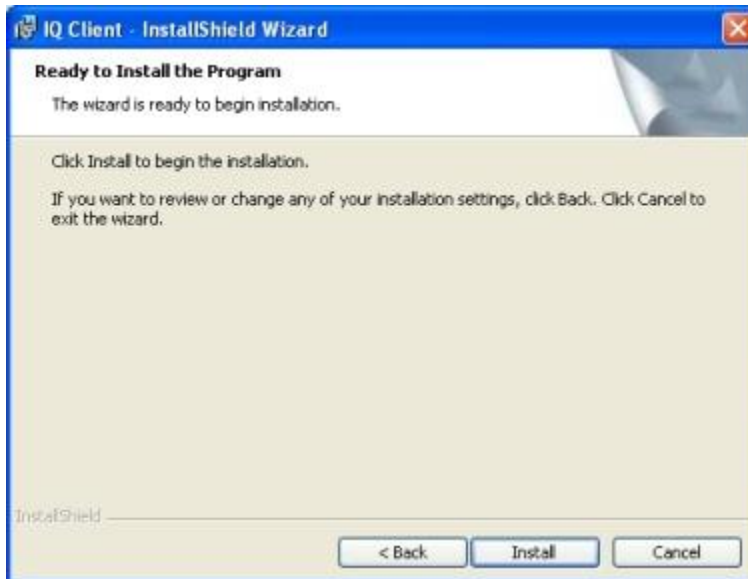


Figure 30

12. As illustrated in **Figure 31** on the next page, the installation of *IQ Client* will take a few minutes.

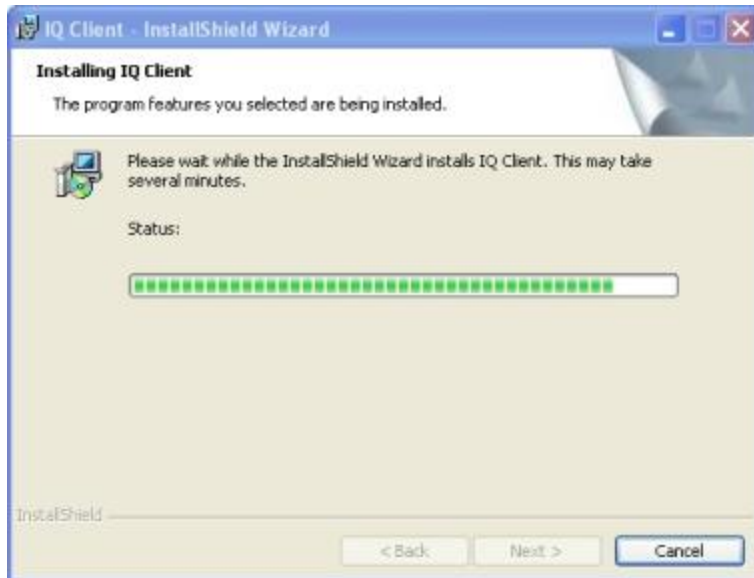


Figure 31

13. Once *IQ Client* is installed, see the window, “InstallShield Wizard Completed,” as illustrated in **Figure 32**. Click “Finish”.



Figure 32

14. To verify that the *IQmfp Client* has been installed successfully, you will find the window, “Installation Complete,” as displayed in Figure 33 below. Click “Next”.

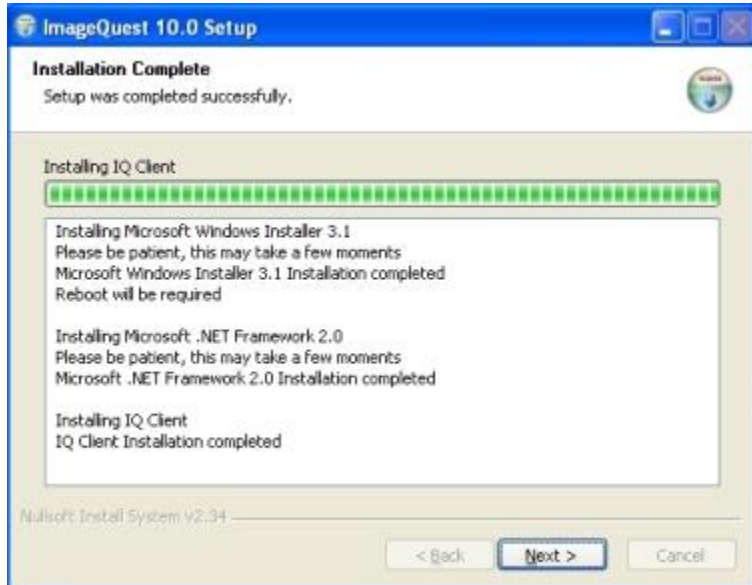


Figure 33

15. CONGRATULATIONS! You have reached the final step to conclude the installation process of the *IQmfp Client*. Click “Finish” to close.



Figure 34

Page intentionally left blank



informa  
software