



KONICA MINOLTA



bizhub C364e/C284e/C224e

MAKE YOUR WORK EASY WITH

ENHANCED MULTI-TOUCH CONTROL



The bizhub C364e series proudly joins the bizhub family – named 2013 A3 MFP Product Line of the Year by Buyers Laboratory Inc.

ENHANCED PERFORMANCE WITH AWARD-WINNING CONTROL

Take control of your workflow with powerful, high-performance bizhub color models for superior color and right-size cost-efficiency. A new enhancement of our award-winning INFO-Palette screen lets you touch, swipe, drag and drop to edit, save and share – it's as easy as operating a tablet PC. High-speed print/copy output keeps you ahead of rising document demands. And Konica Minolta is a world leader in the environmental initiatives that help you reduce pollution, conserve more energy and lower your operating expenses.

EnvisionIT: a new approach for business and professional applications.



EnvisionIT

In today's competitive business world, the challenge is managing documents, distributing information, integrating hardware with software – and doing it all in a networked environment with simple, intuitive control. The solution is Konica Minolta.

It begins with EnvisionIT: our total, end-to-end approach to general business as well as legal, educational and healthcare demands. EnvisionIT combines intelligent design, enhanced performance and proven reliability in a powerful vision that speeds your output, improves your images and reduces your costs. You'll have bizhub MFP performance. Seamless integration with Konica Minolta and 3rd-party software. And IT support from our All Covered division, including managed IT services, IT projects, cloud services and information security services.

EnvisionIT Legal solutions aim to help law firms and departments of all sizes "envision" ways to work smarter and more efficiently with managed services and integration solutions designed for their specific business requirements. EnvisionIT solutions for K-12 and Higher Education help cut costs and balance budgets with innovative technology, eco-friendly products, world-class support to improve student performance and increase teacher and administrator productivity. And Konica Minolta EnvisionIT solutions for healthcare are designed to meet the challenges facing today's healthcare facilities, including the protection of patient records with enhanced performance and security features that meet new standards of both the Health Insurance Portability and Accountability Act (HIPAA) and the Health Information Technology for Economic and Clinical Health (HITECH) initiative.



For right-size cost-efficiency, bizhub is a perfect fit.

It's easy to choose a bizhub® MFP device that suits your business needs: bizhub C364e for 36 ppm output in both color and B&W, bizhub C284e with 28 ppm output, or bizhub C224e with 22 ppm output. All three models can be equipped with either the DF-624 optional RADF for high-speed 80 opm scanning or DF-701 single-pass dual scanning for a top speed of 160 opm, to bring documents into your electronic workflow even faster.

Print control is built in, with Konica Minolta's exclusive Emperon® print system for immediate PCL6/PS3 emulation and native XPS functionality. And a universal print driver lets you manage your printing using familiar commands, so even first-time users and temps will be fully productive right from the start.

INFO-Palette design: an easier, faster way to move information.

Even the look of these three bizhub models is a step ahead. Sleek dark cabinet design and compact footprint lets you position them in the center of your workplace so everyone has access to fast color printing and scanning.

And your bizhub control panel is even more revolutionary. In 2012, Konica Minolta won a special award for control panel design from BLI (Buyers Laboratory LLC). The bizhub C364e, C284e and C224e incorporate the latest evolution of our award-winning INFO-Palette design: a 9" color screen with intuitive multi-touch functionality that's as easy to operate as familiar tablet PCs. You can swipe, drag & drop, tap & toggle, switch easily between map scroll and tab screen menus to control printing, copying, scanning and other functions. A quick flick of your finger across the screen brings you to the menu you want. Function screens put both standard and custom settings at your fingertips.

Enhanced editing operations provide an advantage in previewing your documents before you print. New preview screen capabilities include pinch in & pinch out to enlarge or reduce image size and image rotation operations for smooth confirmation of document details. Long tap displays the next set of operating menus. Transparent menus let you see through to a lower level, so you always know where you are. You can simply touch a file stored in a User Box, drag it and release it in the print, send or edit processing area.

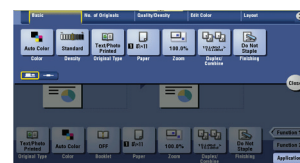
Your enhanced control panel has soft keys that can be called up and displayed in any screen position. An optional 10-Key Pad provides hard keys to make numerical entry quick and sure. The control panel tilts and adjusts from 23° to 55° for accessibility from any position for Section 508 compliance. Orange, blue and white LEDs are easier to see for the vision-impaired and illuminate device status at a glance while printing. Also new reaction sounds give operators sound cues to verify that functions have been completed, commands deleted or authentication accepted. There's even an optional Voice Guidance system to provide audible control instructions.

Simitri color: superior imaging that also protects the environment.

The bizhub C364e/C284e/C224e are unsurpassed in their ability to deliver high-quality, low-cost color documents without slowing down your workflow. Konica Minolta's next-generation Simitri® HD toner formulation creates sharp, clear images with improved fine detail and more legible text. Simitri toner also uses plant-based biomass material to reduce environmental impact – just one of Konica Minolta's leadership initiatives to protect the planet for future generations.

All three bizhub models consume less power, with energy-saving modes including an Optimize Power Consumption mode that automatically sets correct on/off/standby status for workdays, weekends and holidays. The control panel features an Eco-indicator screen that allows you to monitor paper, toner and energy usage by device, account or end-user. Energy-efficient LED lamps reduce energy consumption during scanning – and blank page removal during scanning or copying saves more paper. And thanks to one-watt power consumption in sleep mode your bizhub isn't burning your budget when it isn't in use.

Our Eco Vision 2050 project is committed to reducing CO₂ emissions by 80% over 2005 levels, minimizing greenhouse gases that may contribute to global warming. And our Clean Planet program also provides cost-free recycling for all Konica Minolta consumables, including toner cartridges and bottles, imaging units, developer and drums – with prepaid shipping labels and cost-free packaging.



Enhanced panel operation supports new gesture operations for navigation such as flick, long tap, drag & drop, transparent layers and you can also toggle between a Map Scroll Screen or Tab Screen to access functions needed and enabling customers to execute functions in a highly intuitive manner.



With three models to choose from the bizhub C364e series can provide the right document solution for any size business.



The bizhub C364e series offers an unsurpassed array of scanning features and benefits to bring information into your workflow with greater speed and flexibility.

EVOLUTIONARY PERFORMANCE IN COLOR PRINTING AND SCANNING

Konica Minolta continues to drive the evolution of digital imaging technology – and in general business as well as healthcare, education, legal and other specialized applications, bizhub gives you easy ways to boost your productivity. Along with high-speed printing in color or B&W, you can speed your workflow with fast scanning to multiple destinations – and add auto finishing options to create full-color reports, brochures, flyers, and graphical presentations in-house and on-demand. Count on Konica Minolta to make it all look easy.



Direct Print supports the newly adopted document format Office Open XML – saving you time by allowing drag-and-drop printing of many popular file formats.

High-speed document scanning to multiple destinations.

In addition to the high-speed scanning capabilities of your bizhub C364e/C284e/C224e, Distributed Scan compatibility with Windows servers lets you automate the scanning process by sending documents directly to a “Scan Server” set up to follow your instructions – another bizhub enhancement to speed your workflow.

You can scan to email, FTP, SMB and perform TWAIN scanning using simple command icons on your bizhub touch-screen panel. Scan-to-Me and Scan-to-Home capabilities let you move documents quickly to secure locations. You can also scan directly to convenient User Boxes for individuals, departments, workgroups and projects. Scan to PowerPoint, Word and Excel lets you convert hard-copy documents to highly versatile Office Open XML files easily and automatically – and Scan to PDF/A and Linearized PDF capabilities optimize documents for display or archiving.

Modular finishing options for low-cost in-house printing.

Printing in-house and on-demand saves time and money – and also lets you keep control of sensitive information, including business plans, patient records, student files and legal documents. But stapling, folding or saddle-stitching by hand can be tedious – so the bizhub C364e/C284e/C224e makes things easy with auto-finishing options for producing color and B&W reports, presentations, case files, newsletters, records and marketing or training materials.

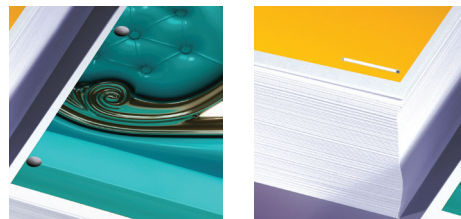
The compact FS-534 Staple Finisher performs 50-sheet 3-position stapling and sorting. There is also an FS-534 Finisher + SD-511 Saddle-Stitcher Kit version for creating up to 80-page booklets with support for tri-fold sheets. Crisp creases in booklets and tri-fold sheets improve the look of your finished product. Both finishers also accept the optional PK-520 2/3 Hole Punch Kit.

The FS-533 Internal Finisher provides a second finishing option for corner stapling or 2-position stapling. You can add the optional PK-519 Punch Kit to your FS-533 for 2/3-hole punching. And the JS-506 Job Separator Tray option helps you sort prints, copies or faxes more easily. With all these modular options, you can easily build a system that serves your needs today – and grows with your business tomorrow.

Powerful, networkable printing to make everyone more productive.

The bizhub C364e, C284e and C224e all incorporate many of our latest enhancements to speed your print workflow. Faster warm-up time of 20 seconds or less and first-copy output in 7 seconds or less can eliminate those unproductive waiting lines – and high-speed internal processing reduces RIP time to keep color jobs moving. Built-in PostScript 3 emulation features Auto Trapping and Black Overprint modes as well as a more versatile ICC profile for specialized or detailed color settings. To enhance your color printing and scanning, sophisticated color conversion imaging and a scanner with enhanced dynamic range are provided to capture vivid dark colors and accurate light greens.

Support for Microsoft Office Open XML lets you perform fast drag-and-drop printing of the latest Microsoft Office files, including docx, xlsx, and pptx. Using downloadable apps, you can take advantage of Cloud storage services – and a convenient USB port on each bizhub lets you print and save documents to/from flash memory devices.



Maximum print/copy flexibility in more paper sizes and weights.

For easy handling of all your document needs, you'll have support for a wide array of media sizes and weights – from thin 14 lb. bond paper (52 gsm) to thick 100 lb. cover stock (300 gsm), including the ability to print 11" x 17" full-bleed originals on 12" x 18" paper to preserve margins and crop-marks. Two standard paper drawers and a 150-sheet multiple bypass tray can be augmented by a Large Capacity Tray to raise maximum paper capacity to 3,650 sheets – enough to handle document traffic on busy days with less reloading. All three models let you print tabbed pages from the multiple bypass tray and insert tabs into healthcare records, legal case files, student information binders, human resource packets and other tabbed documents. And Watermark mode lets you apply transparent marks to print/copy output to identify or restrict access to documents.

You'll have standard 100% duplex productivity at rated engine speed, producing two-sided prints and copies without the need to re-insert originals. Blank page removal during scanning or copying saves more paper. Proof Copy/Print lets you run off a test page to check your settings before starting your entire print run. Carbon Copy printing saves time by outputting the same data continuously from multiple paper trays in different paper weights or colors – for example, white for immediate distribution, yellow for forwarding, green for filing.

EXTENDING YOUR OPTIONS WITH SEAMLESS SOFTWARE INTEGRATION

In today's fast-moving digital world, needs keep changing – and Konica Minolta's EnvisionIT approach extends your power to take advantage of emerging business and professional opportunities. You'll have all the options you need: downloadable productivity apps, high-speed fax, i-Option kits and PageScope software to manage documents and devices. You'll also benefit from bEST integration with 3rd-party business software for specialized solutions – including variable-data printing, account tracking, cost recovery and more.



An optional 10-Key Pad provides hard keys to make numerical entry quick and sure.

All the options you need for all-in-one productivity.

Our evolutionary bizhub models incorporate a wide array of extended functions – including direct access to downloadable apps from the bizhub Marketplace.* These apps, specifically designed for use on our MFPs, allow you to display corporate announcements on your control panel, access a library of business forms and templates, check on the status of your MFP's security settings, scan to Microsoft SharePoint, order Clean Planet recycling boxes, print Clean Planet shipping labels and much more – all without ever leaving the MFP.

Along with downloadable productivity apps and scalable options for auto finishing and paper handling, you'll have access to innovative i-Options for the specialized capabilities required by your business or profession. The new i-Option LK-110 makes it easy to convert User Box data to Compact PDF files and transform incoming faxes to searchable PDF. LK-110 lets you create or convert documents to the various Office Open XML file formats you need. You can also direct-print files attached to email messages. And you can quickly encrypt PDF files – an important security enhancement to safeguard confidential information.

Another new i-Option, LK-111, provides ThinPrint support – enabling the bizhub C364e, C284e and C224e to print in ThinPrint environments without additional hardware. ThinPrint can speed your printing by performing data compression and controlling broadband network traffic when print jobs are sent from ThinPrint engine to ThinPrint client. You can also add more i-Option kits for your bizhub MFP: LK-101 v3 for web-browser support, LK-102 v3 for PDF/A, Linearized PDF and AES 128-bit PDF encryption support, LK-104 v3 for Voice Guidance operation, LK-105 v3 to create searchable PDF files, LK-106 for Barcode Font support, LK-107 for Unicode Font support, and LK-108 with support for OCR Font printing.

The bizhub C364e, C284e and C224e all incorporate Konica Minolta's IWS (Internal Web Server) – a simple, convenient web browser solution for all-in-one functionality. And all models allow you to add our Super G3 fax, with dual-line option for high-volume transmission and reception. Scan/Fax Destination List speeds your distribution by filtering searches by criteria you determine – and you'll have selectable fax file formats including PDF, compact PDF, TIFF, JPEG and XPS, plus Color Internet Faxing, PC Faxing and IP Address Faxing for maximum flexibility to speed information to destination.

*May not be available at time of launch.

The PageScope® Mobile App enables busy professionals to print from smartphones and other portables directly to networked bizhub devices.

The optional IC-414 Fiery Image Controller brings office workgroups high-quality color control, and automated workflows.



Seamless integration of PageScope and 3rd-party software.



Hardware and software, working together – that's a key advantage of Konica Minolta's bizhub Extended Software Technology (bEST). Your bizhub control panel can give you direct

access to commands for standard business software as well as specialized document handling capabilities for legal, educational and healthcare applications.

Konica Minolta's own PageScope Enterprise Suite provides a powerful set of bizhub productivity tools for server-based authentication and account tracking – including a MyPanel Manager utility to customize the interface that appears at each bizhub MFP and disappears when users log out.

The PageScope Mobile app allows you to print or scan documents on the go from multiple mobile platforms – an important advantage for medical, legal and educational professionals who work from widely separated workplaces or collaborate from home.

PageScope software utilities do even more. PageScope Web Connection gives each bizhub its own internal website for fast access to device status information. PageScope Net Care Device Manager provides fast, simple IT management of multiple devices from a single point. PageScope Print Status Notifier provides automatic alerts to speed your workflow. PageScope Data Administrator™ handles addresses, passwords, and accounts with ease – and PageScope Box Operator lets you download and access scanned User Box data from your PC.

Advanced color management tools for graphics solutions.

For graphics-intensive applications in marketing, advertising, design and communications, the bizhub C364e and C284e accept the optional IC-414 Fiery Image Controller from EFI – the industry leader in advanced color management.

The IC-414 provides standard EFI Command Workstation functionality, Fiery Remote Scan, and EFI WebTools to help you get the job done better. Fiery Graphic Arts Options include Auto Trapping, Hot Folder printing with embedded job ticket settings, job setup with finishing options and imposition attributes for drag-and-drop printing. An optional Color Profiler suite allows you to create customized ICC profiles with CMYK devices.

Standard Fiery VUE software orchestrates all these elements into a professional solution for high-impact results – giving you the ability to handle specific Pantone color requirements, manage print queues more effectively, and fine-tune color output to suit the needs of any job.

Enhanced security to protect sensitive business data.

Security isn't an option it's a necessity, especially for specialized legal, educational and healthcare applications that must comply with JSOX, FERPA, HIPAA and other government requirements for the protection of sensitive client, student and patient information.

Your bizhub C364e, C284e and C224e come with enhanced security protections. With bizhub SECURE, your service provider can initiate a powerful array of lock-down protections that guard your bizhub from unauthorized operation. You can initiate encrypted PDF workflow to protect information passing from PCs to networked bizhub devices. IP filtering registers IP addresses of the PCs on your network.

All models are currently in evaluation to meet strict ISO 15408 security standards and all accept a wide array of specialized options to fit the needs of your application, including Biometric Authentication, input for HID Proximity Cards, iClass Cards and Magnetic Stripe Cards, CAC/PIV Card support (available summer 2013), even an optional built-in IC card reader for fast, simple ID card authorization. An optional Copy Guard system can require password access to make copies. HDD Lock can apply password protection to your bizhub hard disk drive.

For environments that demand the highest level of security, the bizhub C364e, C284e and C224e also comply with the higher level IEEE 2600.1 international standard for MFP and printer information security. To protect information once stored on your bizhub hard disk drive, their Job Erase function automatically overwrites your HDD up to three times meeting the criteria of DoD 55220.22-M (Department of Defense) and NAVSO P-5239-26 (US Navy). And when your bizhub is reassigned to another location or removed from service, HDD Sanitizing can overwrite data in eight different modes so no sensitive information is compromised.



For all your document needs, you can count on Konica Minolta. Konica Minolta Business Solutions U.S.A., Inc. is a leader in advanced document management technologies and IT Services. The company focuses on complete business solutions including production print systems, digital presses, multifunctional products (MFPs), managed print services, vertical application solutions and related services and supplies. Konica Minolta has won numerous awards and recognition including being recognized as the #1 Brand for Customer Loyalty in the MFP Office Copier Market by Brand Keys for six years in a row. For the third consecutive year, Buyers Laboratory LLC (BLI) has named Konica Minolta the winner of its "A3 MFP Line of the Year" award. In 2012, Konica Minolta also received "Document Imaging Solutions Line of the Year" recognition from BLI – and has been named to the Dow Jones Sustainability World Index in recognition of the company's economic, environmental and social performance. We are proud of our record of achievement – and we invite you to learn first-hand why you can always count on Konica Minolta. For more information, visit: www.CountOnKonicaMinolta.com



bizhub C364e/C284e/C224e

FULL COLOR PRINTER/COPIER/SCANNER/FAX



bizhub C364e



bizhub C284e



bizhub C224e

SPECIFICATIONS

Type / Toner System / Print Method	Full-Color Printer/Copier/Scanner with Stationary Platen / Simitri HD Toner with Biomass / Tandem Process		
Monthly Duty Cycle (pages)	125,000	100,000	80,000
Print / Copy Speed (Letter, portrait)	Full Color & B&W: 36ppm	Full Color & B&W: 28ppm	Full Color & B&W: 22ppm
• DF-701 Dual Scanner Document Feeder	Full Color/B&W Duplex Speed: 160 opm, Full Color/B&W Simplex Speed: 80 opm, Paper Capacity: 100 Sheets, Paper Size: 5.5" x 8.5" to 11" x 17"		
• DF-624 Single Rev. Scanner Document Feeder	Full Color/B&W Duplex Speed: 37 opm, Full Color/B&W Simplex Speed: 80 opm, Paper Capacity: 100 Sheets, Paper Size: 5.5" x 8.5" to 11" x 17"		
Power Requirements / Consumption	120V 12A (60 Hz) / 1500W or less		
Dimensions / Weight	24.2"(W) x 27"(D) x 31"(H) / 185.18 lbs		

COPY

Warm-up Time / First Copy Time	≤ 20 sec. / Full Color: ≤ 6.9 sec., B&W: ≤ 5.3 sec.	≤ 18 sec. / Full Color: ≤ 7.7 sec., B&W: ≤ 5.9 sec.	≤ 18 sec. / Full Color: ≤ 8.3 sec., B&W: ≤ 6.9 sec.
Copy Resolution/Quantity	600 x 600 dpi / 1-9,999		
Magnification	Zoom range: 25% - 400%, 0.1% increments, Preset reduction: 78.5%, 73.3%, 64.7%, 50.0%, Preset enlargement: 121.4%, 129.4%, 154.5%, 200%		
Copy Exposure Modes	Text (legible text), Text/Photo (clear text and halftones), Photo (optimized for gradations), Map (fine edges and legible text), Dot Matrix (dot matrix or pencil originals), Copied Paper		

PRINT: Emperon Print System with bizhub Extended Solution Technology / Open API

Processor / Memory / Hard Disk Drive	800 MHz / 2GB / 250GB (Shared with the copier)		
Print Resolution	600 x 600 dpi (1800 dpi equivalent x 600 dpi) or 1200 x 1200 dpi / Grayscale Gradations: 256 shades per pixel		
Page Description Language / Fonts	PCL5e/c, PCL6 (XL v.3.0) Emulation, PS3 (v.3016) Emulation, XPS v. 1.0 (XML Paper Specification) / PCL: 80 Roman fonts, PostScript 3 Emulation: 137 Roman fonts		
Operating System Compatibility	PCL6/PS3: Windows XP Home (SP1), Windows XP Professional (x32, x64), Windows Vista (x32, x64), Windows 7 (x32, x64), Windows 8 (x32, x64), Windows Server 2003 Standard & Enterprise (x32, x64), Windows Server 2003 Standard & Enterprise R2 (x32, x64), Windows Server 2008 Standard & Enterprise (x32, x64), Windows Server 2008 Standard & Enterprise R2, Windows Server 2012 Datacenter & Standard; XPS: Windows Vista (x32, x64), Windows 7 (x32, x64), Windows 8 (x32, x64), Windows Server 2008 Standard & Enterprise (x32, x64), Windows Server 2008 Standard & Enterprise R2, Windows Server 2012 Datacenter & Standard; Mac (PS-PPD): OS 9.2 or later, OS X 10.2 or later, OS X 10.4 (Intel) or later; Linux: Red Hat Enterprise		
Interface	10 Base-T/100 Base-TX/1000 Base-T, USB 1.1, USB 2.0, USB Host		
Network Protocols	TCP/IP (IPv4/IPv6), BOOTP, ARP, ICMP, DHCP, DHCPv6, BOOTP, SMB, IPP, HTTP, POP, SMTP, LDAP, NTP, SSL, IPX, AppleTalk, Bonjour, NetBEUI, WebDAV, DPWS, S/MIME, IPsec, DNS, DynamicDNS, LLNMR, LLTD, SSSD, SOAP		

COPY / PRINT FUNCTIONS

Features	Account Track (1,000 accounts), Administration Mode, Auto Duplex, Auto Tray Switching, Card Shot, Copy Guard, Encrypted Network Password Printing, Energy Save Mode, Enlarge Display, Erase (Border, Frame, Edge) Mode, Finishing (Group, Sort, Staple, Punch, Half-Fold, Tri-Fold, Center Staple and Fold), Form Overlay, Glossy Mode, HDD Encryption, HDD Job Overwrite, HDD Sanitizing, Image Preview (Job Finishing Image Display, Engine Configuration Display), Interrupt, Job List, Job Reserve, Job Skip, LDAP, Mixplex, Mix-Media, MyTab, Non-Image Area Erase, OHP Interleaving, Password Copy, Program/Recall Jobs, Print from USB, Proof Copy, Secure Printing, Separate Scan, Tab Printing, User Authentication (Up to 20 Authentication Servers)(Synchronize w/Account Track), User Box Function, Utility (Meter Count, Environment Settings, Default Settings, One-Touch Settings, Check Consumable Life), Watermark, Zoom Selection
----------	---

SCAN

Scan Resolutions	200 dpi, 300 dpi, 400 dpi, 600 dpi
Scan File Formats / Color Modes	TIFF, PDF, Compact PDF, JPEG, XPS, Compact XPS, PPTX / Auto Color, Full Color, Black & White, 2-Color, Single Color
Scan Functions	Scan-to-Email, Scan-to-FTP, Scan-to-HDD (Scan-to-User Box), Scan-to-Me/Scan-to-Home, Scan-to-SMB (Scan-to-Desktop), Scan-to-USB, Scan-to-WebDAV, Distributed Scan Management, Network TWAIN, WS-Scan, Color Internet Fax

• FK-508 / FK-511 FAX KIT (OPTIONAL)

Compatibility / Compression	Super G3 compatibility, 33.6 Kbps modem speed / MH, MR, MMR, JBIG data compression
Fax Transmission Speed / Fax Memory	Less than 3 seconds per page (JBIG, standard resolution) / 2 GB (shared print, copy, scan, fax memory)
Fax Line Mode / Fax Exposure Mode	PSTN, PBX, G3 / Text, Text/Photo, Photo, Dot Matrix
Fax Functions	Autodialing (2,000 addresses), Auto Memory Reception, Broadcasting (maximum 600 locations), Duplex Transmission/Reception, F-Code Support, Group Dialing (up to 500 addresses per group / up to 100 groups), Password Transmission/Reception, PC-Fax, IP Address Fax, Polling Transmission/Reception, Program Dialing (400 programs), Timer Transmission, TSI Routing
Fax Options	MK-728 Fax Mount Kit, Spare TX-Marker Stamp 2, SP-501 Fax Stamp Unit

PAPER HANDLING

Original Size	Up to 11" x 17" (scanning/copying), Up to 11" x 17" full bleed on 12" x 18" paper (printing)
Paper Trays	Tray 1: 500-sheet (universal cassette) / 5.5" x 8.5" to 11" x 17" / 14 lb. bond to 140 lb. index Tray 2: 500-sheet (universal cassette) / 5.5" x 8.5" to 12" x 18" / 14 lb. bond to 140 lb. index Bypass Tray: 150-sheet bypass/4" x 6" to 12" x 18", 8" x 13" / Banner Paper / 16 lb. bond to 100 lb. cover up to 300 gsm
• PC-110 Paper Feed Cabinet	500-sheets / 8.5" x 11", 8.5" x 14", 11" x 17" / 14 lb. bond to 140 lb. index / Foolscap: 8.5" x 13.5", 220mm x 330mm, 8.5" x 13", 8.25" x 13", 8.12" x 13.25", 8" x 13"
• PC-210 Paper Feed Cabinet	500-sheets (x2) / 8.5" x 11", 8.5" x 14", 11" x 17" / 14 lb. bond to 140 lb. index / Foolscap: 8.5" x 13.5", 220mm x 330mm, 8.5" x 13", 8.25" x 13", 8.12" x 13.25", 8" x 13"
• PC-410 Paper Feed Cabinet	2,500-sheets / 8.5" x 11" / 14 lb. bond to 140 lb. index
Maximum Paper Capacity	3,650-sheets (total with options)

APPLICATIONS

Network & Device Management	PageScope Data Administrator, Driver Packaging Utility, HDD Back-Up Utility, Download Manager (ICC Color Profile Utility), Log Management Utility
User Tools	PageScope Web Connection, PageScope Direct Print, PageScope Box Operator, PageScope Print Status Notifier, Copy Protect Utility, Print Utility for Unix
Management Tools	bizhub vCare support
• PageScope Enterprise Suite	PageScope Account Manager, PageScope Authentication Manager, PageScope MyPrint Manager, PageScope MyPanel Manager, PageScope Net Care Device Manager (standard)

• ADDITIONAL OPTIONS

• Authentication / Security Options	AU-102 Biometric Authentication Unit, AU-201H HID Proximity Card Authentication Unit, AU-202H HID iClass Card Authentication Unit, AU-204H Magnetic Stripe Card Reader, AU-211P CAC/PIN Solution*, SC-508 Copy Guard Kit, WT-506 Working Table to support Authentication Devices, MK-735 Internal Mount Kit
• External Keyboard	KH-102 Keyboard Mount Kit, KP-101 10-Key Pad, EK-606 USB Interface for External Keyboard and Voice Guidance, EK-607 USB Interface for External Keyboard, Bluetooth Support and Voice Guidance
• i-Option	LK-101 v3 i-Option, LK-102 v3 i-Option, LK-104 v3 i-Option, LK-105 v3 i-Option, LK-106 i-Option, LK-107 i-Option, LK-108 i-Option, LK-110 i-Option, LK-111 i-Option, UK-204 i-Option Memory Upgrade Kit
• Finishing	FS-534 50-Sheet Staple Finisher, FS-534 50-Sheet Staple Finisher + SD-511 Saddle Stitcher Kit, PK-520 Punch Kit (FS-534), FS-533 50-Sheet Inner Staple Finisher, PK-519 Punch Kit (FS-533), JS-506 Job Separator
• Others	DK-510 Copy Desk, MK-730 Banner Paper Guide, OC-511 Original Cover

• FIERY IC-414 EMBEDDED IMAGE CONTROLLER (OPTIONAL)**

Processor / Memory / Hard Disk Drive	Intel Pentium E5300 2.6 GHz / 2 GB (standard/max) / 160 GB HDD
Page Description Language / Fonts	PCL5, PCL6, Adobe PostScript 3 (version 3019) / PCL: 80 fonts, Adobe PS3: 138 fonts
Operating System Compatibility	PCL6, PS3: Windows XP (x32, x64), Windows Vista (x32, x64), Windows 7 (x32, x64), Windows 8 (x32, x64), Windows Server 2003, Windows Server 2008 (x32, x64), Windows Server 2012 (x64); Mac: OS X 10.4.x, Intel-based: 10.4.x (print driver), 10.5.x, 10.6.x, 10.7.x, 10.8.x; Unix/Linux:
Interface / Protocols	10 Base-T/100 Base-TX/1000 Base-T, USB 1.1, USB 2.0 / TCP/IP, IPX/SPX, AppleTalk (EtherTalk), LPR, SMB, LPD, Netware (5.x, 6.x), Pserver, Nprinter, NDPS, IPP, SMTP/POP3, LDAP, SSL/TLS, SNMP, HTTP/HTTPS, IPv6, DPWS (WSD)
Standard Software	Fiery Command Workstation, ColorWise Tools, Fiery Spot-On™, Fiery WebTools, Fiery VUE, Secure Erase
Optional Software / Hardware	Fiery Productivity Package, Hot Folders/Virtual Printers, Auto Trapping, SeeSequence Impose, SeeSequence Compose, Impose+Compose Suite, Color Profiler Suite W/ES-2000, ES-2000 Spectrophotometer / VI-506 Video Interface Kit for IC-414

● OPTIONAL ● STANDARD

*Anticipated availability Summer 2013
**Fiery not available for the bizhub C224e



QLS SOLUTIONS GROUP, INC.
701 Seneca Street Suite #600
Buffalo, NY 14210
800-859-2203

www.QLS.com
www.QLS.com.Blog



KONICA MINOLTA

Konica Minolta Optimized Print Services offers a full suite of device output services and workflow solutions that increase efficiency and control costs. Please contact QLS, an authorized Konica Minolta sales representative for details.

© 2013 KONICA MINOLTA BUSINESS SOLUTIONS U.S.A., INC. All rights reserved. Reproduction in whole or in part without written permission is prohibited. Konica Minolta, Count on Konica Minolta, bizhub, PageScope and Simitri are trademarks of KONICA MINOLTA, INC. Fiery and the Fiery logo are trademarks of EFI. All other brands and product names are registered trademarks or trademarks of their respective owners. Design & specifications are subject to change without notice. Some functions may require options, which may or may not be available at time of launch.



Item #: C364eBRO
7/17/13