

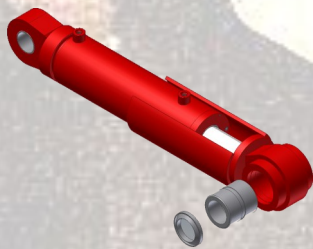


5 TINE HYDRAULIC SCRAP GRAPPLE - MODEL H5T

THE ANVIL ADVANTAGE

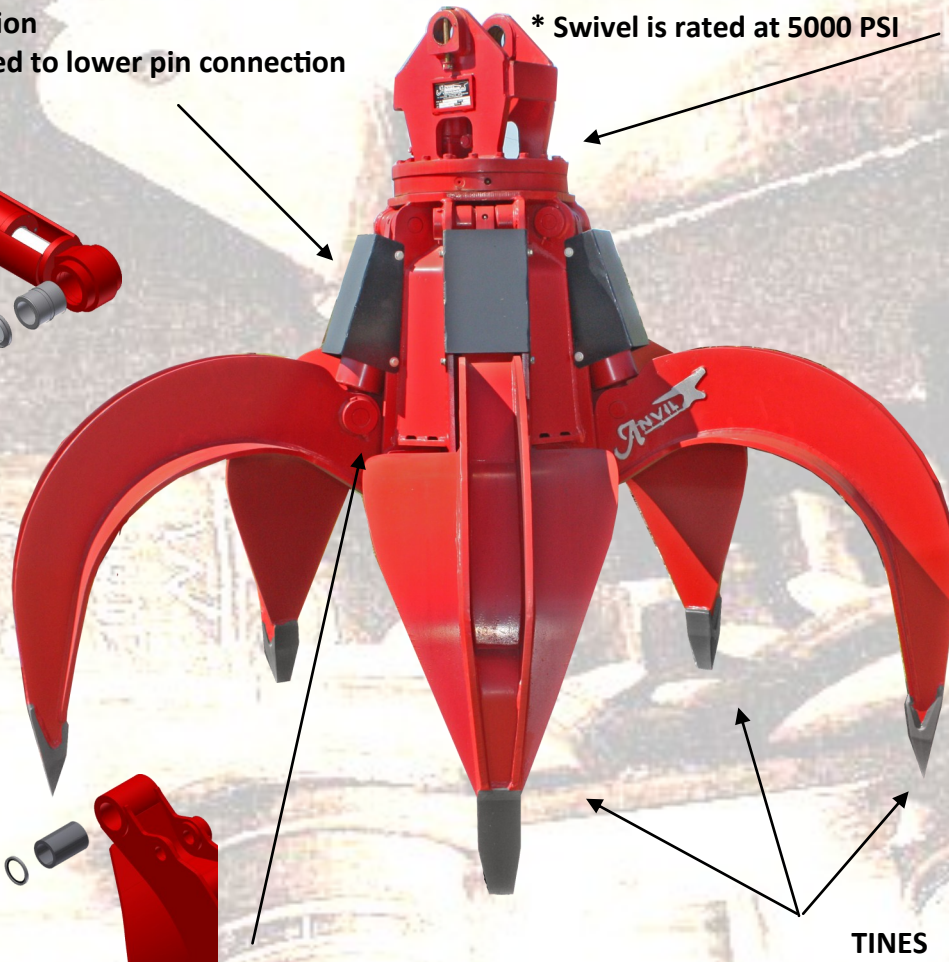
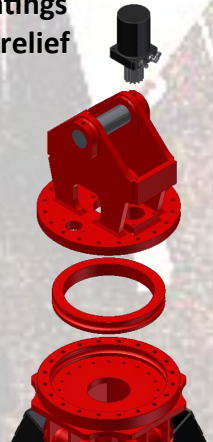
CYLINDER FEATURES

- * Updated design to increase performance and reliability
- * Inertia welded rod eye
- * 35% Increased surface area at lower cylinder pin connection
- * Grease seals added to lower pin connection



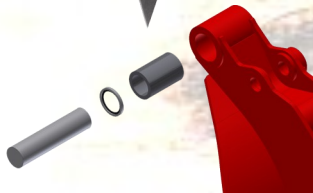
ROTATION

- * Separate components allowing for maximum durability
- * Bearings have 30% Higher Load Ratings
- * Motor features built in cross over relief
- * Swivel is rated at 5000 PSI



TINE PIN CONNECTION

- * Improved design offers 2X longer life
- * 35% Increased surface area at tine pin connection
- * Sealed connection retains grease



TINES

- * Proven modular design to decrease stress while increasing structural integrity
- * High strength wear resistant alloy steel
- * In house Finite Element Analysis and 3D design

1 YEAR WARRANTY AGAINST MANUFACTURER DEFECTS

P.O. Box 216/261 Highway 19
SLAUGHTER, LOUISIANA 70777
USA

225-654-8222

WWW.ANVILATTACHMENTS.COM
SALES@ANVILATTACHMENTS.COM



5 TINE HYDRAULIC SCRAP GRAPPLE - MODEL H5T

CAPACITY (HEAPED)	LENGTH OPEN	LENGTH CLOSED	HEIGHT OPEN	HEIGHT CLOSED	STANDARD WEIGHT	CYLINDER PRESSURE (MAX-PSI)	CYLINDER FLOW RATE (MAX-GPM)	ROTATION PRESSURE (MAX-PSI)	ROTATION FLOW RATE (MAX-GPM)
3/4 CU YD	6' 5"	4' 8"	6' 8"	8' 1"	3800	5000	50	1500	5
1 CU YD	7' 0"	5' 3"	6' 10"	8' 2"	4000	5000	50	1500	5
1 1/4 CU YD	7' 6"	5' 4"	7' 0"	8' 7"	4300	5000	50	1500	5
1 1/2 CU YD	8' 0"	5' 5"	7' 3"	8' 9"	4700	5000	50	1500	5
1 3/4 CU YD	8' 5"	5' 7"	7' 4"	8' 11"	4900	5000	50	1500	5
2 CU YD	8' 8"	5' 11"	7' 7"	9' 5"	5400	5000	50	1500	5
2 1/2 CU YD	10' 8"	6' 10"	8' 3"	10' 6"	5900	5000	50	1500	5
3 CU YD	11' 1"	7' 3"	8' 11"	11' 0"	6800	5000	75	1500	5
3 1/2 CU YD	11' 7"	7' 9"	9' 1"	11' 2"	7300	5000	75	1500	5
4 CU YD	13' 0"	9' 0"	9' 4"	11' 4"	7800	5000	100	1500	5
4 1/2 CU YD	13' 3"	9' 2"	9' 6"	11' 6"	8300	5000	100	1500	5
5 CU YD	13' 6"	9' 4"	9' 8"	11' 8"	9000	5000	100	1500	5

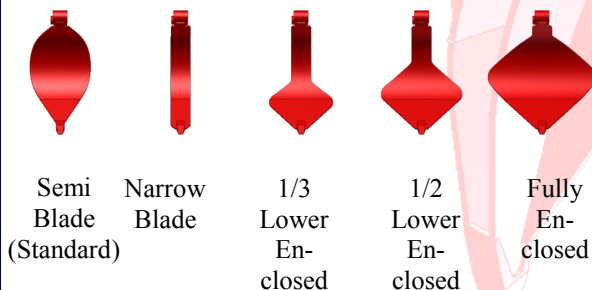
* **Flow should be set for an opening of 3 seconds or greater, rotation should be set at 2 GPM or 5 RPMs**

SPECIFICATIONS: In accordance with our established company policies of constantly improving our products, we reserve the right to change or modify our product or specifications at any time without notice.

- * **PINS AND BUSHINGS ARE OVERSIZED AND HEAT TREATED FOR MAXIMUM WEAR LIFE**
- * **TINES ARE T-1 (A514) ALLOY STEEL FOR LONGER WEAR LIFE**
- * **TINE POINTS ARE REPLACEABLE 400 BHN WEAR RESISTANT ALLOY STEEL**
- * **CYLINDERS ARE OVERSIZED AND PRESSURE TESTED FOR BOTH HIGH AND LOWER PRESSURE APPLICATIONS**
- **ROD COVERS PROTECT CYLINDER ROD AGAINST DAMAGE**

REV. 2.13.13

AVAILABLE TINE LINERS CONFIGURATION



AVAILABLE OPTIONS

- * **ROTATION**
360 POWERED OR 360 KNOCK AROUND
270 POWERED OR 270 KNOCK AROUND
FIXED (NO ROTATION)
- * **CYLINDER COVERS**
PROTECT CYLINDER HOSES AGAINST DAMAGE
- * **TINE LINERS**
MATERIAL UPGRADE TO AR400