

BasicPlus

CPR, AED, and
First Aid for Adults

MEDIC First Aid

BasicPlus

CPR, AED, and First Aid For Adults

Student Book

Version 8.0

Purpose of this Guide

This MEDIC First Aid *BasicPlus Version 8.0 Student Book* is solely intended to facilitate certification in a MEDIC First Aid BasicPlus CPR, AED, and First Aid training class. The information in this book is furnished for that purpose and is subject to change without notice.

MEDIC First Aid certification may only be issued when a MEDIC First Aid–authorized Instructor verifies a student has successfully completed the required core knowledge and skill objectives of the program.

Notice of Rights

No part of this MEDIC First Aid *BasicPlus Version 8.0 Student Book* may be reproduced or transmitted in any form or by any means, electronic or mechanical, including photocopying and recording, or by any information storage and retrieval system, without written permission from MEDIC FIRST AID International, Inc.

Disclaimer

HSI has used reasonable effort to provide up-to-date, accurate information that conforms to generally accepted treatment recommendations at the time of publication. These recommendations supersede recommendations made in previous MEDIC First Aid® programs. Science and technology are constantly creating new knowledge and practice. Like any printed material, this publication may become out of date over time. Guidelines for safety and treatment recommendations cannot be given that will apply in all cases/scenarios as the circumstances of each incident often vary widely. Signs and symptoms may be incomplete and can vary from person to person. Do not use the information in this program as a substitute for professional evaluation, diagnosis, and treatment from an appropriately qualified physician or other licensed healthcare provider. Local or organizational physician-directed practice protocols may supersede treatment recommendations in this program. Alert emergency medical services (EMS) or activate your emergency action plan immediately if you are not sure an emergency exists or when any person is unresponsive, badly hurt, looks or acts very ill, or quickly gets worse.

Trademarks

MEDIC First Aid and the MEDIC First Aid logo are registered trademarks of MEDIC FIRST AID International, Inc.

MEDIC FIRST AID International, Inc.
1450 Westec Drive ■ Eugene, OR 97402
800-447-3177 ■ 541-344-7099

E-mail: response@hsi.com ■ Visit our website at hsi.com/medicfirstaid

Copyright © 2016 MEDIC FIRST AID International, Inc.
All Rights Reserved. Printed in the United States of America

First Edition—2016



We Make Protecting and Saving Lives Easy™

MEDIC First Aid is a member of the HSI family of brands.

ISBN 978-1-936515-62-2

5080

Table of Contents

May 2016

PREPARING TO HELP

First Aid Provider	1
First Aid	1
Recognizing an Emergency	2
Personal Safety	2
Deciding to Help	3
Protecting Yourself	4
Infectious Bloodborne Diseases	4
Standard Precautions	4
Personal Protective Equipment	5
Skill Guide 1 — Removing Contaminated Gloves	6
Legal Considerations	7
Consent	7
Implied Consent	7
Abandonment	7
Good Samaritan Laws	8
Calling for Help	9
Emergency Medical Services (EMS)	9
Emergency Action Plans	10
Poison Help Line	11
Emergency Moves	12

CPR AND AED

Cardiac Arrest	13
Oxygen and the Human Body	13
Sudden Cardiac Arrest	14
Cardiopulmonary Resuscitation (CPR)	14
Early Defibrillation	14
Chain of Survival	15
Secondary Cardiac Arrest	16
Opioid Overdose	16
Chest Compressions	18
Skill Guide 2 — Chest Compressions	20

Rescue Breaths	21
Establishing an Airway	21
Using Barrier Devices	22
Delivering Breaths	22
Skill Guide 3 — Rescue Breaths — CPR Mask	24
Skill Guide 4 — Rescue Breaths — CPR Shield	25
Automated External Defibrillation	26
AED Operation	26
AED Troubleshooting & Considerations	27
Skill Guide 5 — Using an AED	30
Primary Assessment — Unresponsive Person	31
Recovery Position	32
Skill Guide 6 — Primary Assessment — Unresponsive Person	33
Skill Guide 7 — Recovery Position	34
Caring for Cardiac Arrest	35
Skill Guide 8 — Caring for Cardiac Arrest	38
Multiple Provider Approach to CPR	39
Skill Guide 9 — Multiple Provider Approach to CPR	40
Choking	41
Mild Obstruction	41
Severe Obstruction	42
Skill Guide 10 — Choking	43
 ASSESSMENT	
Primary Assessment — Responsive Person	44
Skill Guide 11 — Primary Assessment — Responsive Person	46
Secondary Assessment	47
Skill Guide 12 — Secondary Assessment	49
 SUDDEN INJURY	
Control of Bleeding	50
Tourniquets	51
Hemostatic Dressings	51
Skill Guide 13 — Control of Bleeding	52
Using a Tourniquet	53
Skill Guide 14 — Using a Commercial Tourniquet	55
Skill Guide 15 — Using an Improvised Tourniquet	56
Using a Hemostatic Dressing	57
Skill Guide 16 — Using Hemostatic Dressings	58

Shock	59
Internal Bleeding	60
Amputation	61
Impaled Objects	62
Impaled Object in the Eye	63
Open Chest Injury	64
Open Abdominal Injury	65
Head, Neck, or Back Injury	66
Spinal Injury	66
Brain Injury	67
Concussion	67
Skill Guide 17 — Manual Spinal Motion Restriction	69
Swollen, Painful, or Deformed Limb	70
Skill Guide 18 — Manual Stabilization of a Limb	72
Burns	73
Thermal Burns	73
Electrical Burns	74
Chemical Burns	75
Chemicals in the Eye	76
Minor Injuries	77
Nosebleed	77
Injured Tooth	77
 SUDDEN ILLNESS	
Sudden Illness	79
Altered Mental Status	80
Fainting	81
Stroke	81
Hypoglycemia	82
Seizure	83
Breathing Difficulty, Shortness of Breath	85
Asthma and Inhalers	85
Severe Allergic Reaction	86
Pain, Severe Pressure, or Discomfort in Chest	87
Poisoning	89
Ingested Poisoning	89
Inhaled Poisoning	90
Severe Abdominal Pain	92

ENVIRONMENTAL EMERGENCIES

Heat Emergencies	94
Heat Exhaustion	94
Heat Stroke	96
Cold Emergencies	97
Hypothermia	97
Frostbite	98

BITES AND STINGS

Stinging Insects	100
Snakebites	102
Pit Viper	102
Coral Snake	103
Spider Bites	104
Tick Bites	105
Marine Animal Stings	106
Jellyfish	106
Stingray	107
Animal and Human Bites	108

ADDITIONAL CONSIDERATIONS

Emotional Considerations	109
--------------------------------	-----

ADDITIONAL INFORMATION

Glossary	111
Sources	117
Endnotes	117
Knowledge Check Answers	118
Class Evaluation	123

Cardiac Arrest

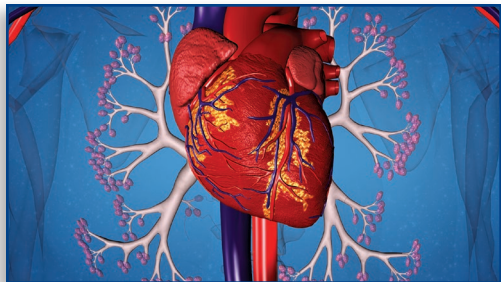


Because the human body cannot store oxygen, it must continually supply tissues and cells with oxygen through the combined actions of the respiratory and circulatory systems.

Oxygen and the Human Body

The respiratory system includes the lungs and the airway, the passage from the mouth and nose to the lungs. Expansion of the chest during breathing causes suction, which pulls outside air containing oxygen through the airway and into the lungs. Relaxation of the chest increases the pressure within and forces used air to be exhaled from the lungs.

The circulatory system includes the heart and a body-wide network of blood vessels. Electrical impulses stimulate contractions of the heart to create pressure that pushes blood throughout the body. Blood vessels in the lungs absorb oxygen from inhaled air. The oxygen-rich blood goes to the heart, then out to the rest of the body.



Large vessels called arteries carry oxygenated blood away from the heart. Arteries branch down into very small vessels that allow oxygen to be absorbed directly into body cells so it can be used for energy production. Veins return oxygen-poor blood back to the heart and lungs, where the cycle repeats.

The brain is especially sensitive to a lack of oxygen. When oxygen is cut off to the brain, brain cell damage, and death, can occur within a matter of minutes.

Sudden Cardiac Arrest (SCA)

Cardiac arrest is the loss of the heart's ability to pump blood to the body. The most dramatic occurrence, sudden cardiac arrest, can happen with little or no warning. Victims abruptly become unresponsive and collapse. Abnormal gasping can occur. Breathing may stop completely.

The most likely cause of sudden cardiac arrest is an unexpected disruption to the heart's electrical system, in which normally organized electrical pulses within the heart become disorganized and a chaotic quivering condition known as ventricular fibrillation occurs. Blood flow to the body, along with the oxygen it carries, stops. Without blood flow, brain damage occurs rapidly and quickly leads to death.

Cardiopulmonary Resuscitation (CPR)

Cardiopulmonary resuscitation (CPR) is the immediate treatment for a suspected cardiac arrest. CPR allows a bystander to restore limited oxygen to the brain through a combination of chest compressions and rescue breaths. However, CPR alone is not enough.

Early Defibrillation

The most effective way to end fibrillation is defibrillation, using a defibrillator and electrode pads applied to the chest. A controlled electrical shock is sent through the heart to stop ventricular fibrillation, allowing the heart's normal electrical activity to return and restore blood flow.



Successful defibrillation is highly dependent on how quickly defibrillation occurs. For each minute in cardiac arrest, the chance of survival goes down by about 10%. After as few as 10 minutes, survival is unlikely.

Simply activating EMS will not help. Even in the best EMS systems, the amount of time it takes from recognition of the arrest to EMS arriving at the side of the injured or ill person is usually longer than 10 minutes.

An automated external defibrillator (AED) is a small, portable, computerized device that is simple for anyone to operate. Bystander use of AEDs has been growing steadily, with common placements of the devices in public locations such as airports and hotels, and workplaces in general.



Turning on an AED is as simple as opening a lid or pushing a power button. Once it is on, an AED provides voice instructions to guide you through its attachment and use.

An AED automatically analyzes the heart rhythm, determines if a shock is needed, and charges itself to be ready to defibrillate. An operator simply pushes a button to deliver the shock when prompted by the AED.

Chain of Survival

The chain of survival is often used to describe the best approach for treating sudden cardiac arrest. Each link in the chain is essential for a person to survive. If a single link is weak or missing, the chances for survival are greatly reduced. The greatest chance for survival exists when all the links are strong:

- Early recognition of cardiac arrest and activation of EMS
- Immediate CPR with high-quality chest compressions
- Rapid defibrillation, or electrical shock, to the heart
- Effective basic and advanced EMS care and transport
- Effective post-cardiac arrest care at a hospital



Secondary Cardiac Arrest

Unlike sudden cardiac arrest, in which the heart is the primary problem, cardiac arrest can also be the end result of the loss of an airway or breathing. This is secondary cardiac arrest.

Problems such as hazardous breathing conditions in a confined space, drowning, and drug overdoses can result in secondary cardiac arrest. With no incoming oxygen, the heart progressively becomes weaker until signs of life become difficult or impossible to assess.



If the heart is simply too weak to create obvious signs of life, immediate CPR, with an emphasis on effective rescue breaths, may be the only chance to restore them.

Opioid Overdose

The abuse of opioid drugs to get a euphoric high is a serious and growing health problem. Increasing prescriptions for opioid pain relievers, such as hydrocodone and oxycodone, have made them more commonly available. The use of heroin, a highly addictive opioid, also contributes to the problem.

As a result, the number of overdoses and deaths from prescription opioids and heroin has increased dramatically. Opioids, taken in excess, can depress and stop breathing. Opioid overdose is a clear cause of secondary cardiac arrest.



Naloxone, also known as Narcan, is a medication that can temporarily reverse the life-threatening effects of opioids. It is easy to administer, either through an auto-injector device or through an aerosol that is sprayed into the nose. Naloxone is becoming more readily available to lay providers.

It is reasonable to provide education and training on responding to suspected opioid overdoses, including the administration of naloxone, to those most likely to be involved with this type of emergency. Laws regarding first aid administration of naloxone vary by city and state. As with Good Samaritan laws, know the laws in your area.



Knowledge Check

The chain of survival is often used to describe the best approach for treating sudden cardiac arrest. The first three links of the chain are typically the responsibility of a trained first aid provider. Describe those links.

Preview

Chest Compressions



There is a set of basic CPR skills used to provide the most effective approach to cardiac arrest.

External compression of the chest increases pressure inside the chest and directly compresses the heart, forcing blood to move from the chest to the lungs, brain, and the rest of the body.

Quality matters. The better you compress, the greater the influence on survival. Focus on high-quality techniques:

- Compress deeply, more than 2 inches. It is likely you will not compress deep enough. While injury could occur from deeper compressions, do not let the fear of this affect compression depth.
- Compress fast, between 100 and 120 times per minute. Do not let a higher compression speed result in shallower compression depth.
- Allow the chest wall to fully recoil, or rebound, between compressions. Avoid leaning on the chest at the top of each compression.



When compressing properly, you may hear and feel changes in the chest wall. This is normal. Forceful external chest compressions may cause chest injury, but are critical if the person is to survive. Reassess your hand positioning and continue compressions.



Knowledge Check

What are the 3 measures of high-quality chest compressions?

Preview

Chest Compressions



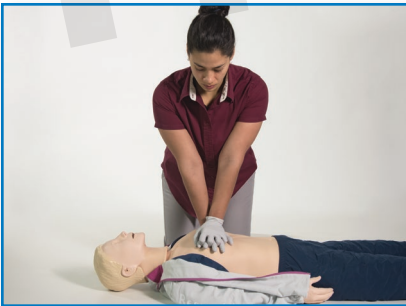
Position Your Hands

- Position person face up on a firm, flat surface. Kneel close to chest.
- Place heel of one hand on center of chest, on lower half of breastbone.
- Place heel of your other hand on top of and parallel to first. You can interlace your fingers to keep them off chest.



Position Your Body

- Bring your body up and over chest so your shoulders are directly above your hands. Straighten your arms and lock your elbows.



Compress

- Bending at the waist, use upper body weight to push straight down at least 2 inches.
- Lift hands and allow chest to fully return to its normal position. Move immediately into downstroke of next compression.
- Avoid leaning on chest at the top of each compression.
- Continue compressions at a rate of 100–120 times per minute.

Primary Assessment — Unresponsive Person



The primary assessment is a simple way to quickly identify if a life-threatening condition is present. It is the initial approach to anyone suspected of being ill or injured.

The steps of the primary assessment are always the same:

- If it is safe to provide care, check for responsiveness.
- If unresponsive, activate EMS and get an AED, if one is available.
- Check for normal breathing.
- If normal breathing is found, place an uninjured person in a recovery position.
- If the person is not breathing or only gasping, perform CPR.



If you determine a person is unresponsive, send a bystander to activate EMS and get an AED. If you are alone, do this yourself and quickly return to the person.

If you have a mobile phone, use it to activate EMS. The speaker function will allow you to follow instructions from an EMS dispatcher while providing care.

To check for normal breathing, quickly look at the face and chest. Take no longer than 10 seconds. Normal breathing is effortless, quiet, and regular. If you are unsure, assume breathing is not normal.

Weak, irregular gasping, snorting, or gurgling sounds can occur early in cardiac arrest. These actions provide no usable oxygen. This is not normal breathing.

If the person is not breathing, or only gasping, perform CPR, beginning with compressions.

When an unresponsive person is breathing normally, and uninjured, place him or her in a side-lying recovery position to help protect the airway.

Recovery Position

The recovery position helps protect the airway by using gravity to drain fluids from the mouth and keep the tongue from blocking the airway.

Frequently assess the breathing of anyone placed in the recovery position. The person's condition could quickly become worse and require additional care.



Knowledge Check

A fellow employee collapses near you during a staff meeting. As a trained first aid provider, you move to help. You kneel next to him, squeeze his shoulder, and loudly ask, "Are you all right?" He is unresponsive, so you direct other employees to activate EMS and get the company's AED. You look closely at the face and chest for breathing; he makes a brief gasping snort, but then remains still. What do you do next?

Primary Assessment — Unresponsive Person



Assess Scene

- Pause and assess scene for safety.
- If unsafe, or if it becomes unsafe at any time, GET OUT!



Check for Response

- Tap or squeeze shoulder and ask loudly, "Are you all right?"
- If unresponsive, have someone activate EMS and get an AED.



Look for Normal Breathing

- Position person face-up on a firm, flat surface.
- Look at face and chest for normal breathing. Take no longer than 10 seconds. If unsure, assume breathing is not normal.
- Weak, irregular gasping, snorting, or gurgling is not normal breathing.



Provide Indicated Care

- If person is not breathing, or only gasping, perform CPR, beginning with compressions.
- If normal breathing is found, place an uninjured person in recovery position.

Recovery Position



Prepare

- Place arm nearest you up alongside head.
- Bring far arm across chest and place back of hand against cheek.
- Grasp far leg just above knee and pull it up so the foot is flat on ground.



Roll

- Grasping shoulder and hip, roll person toward you in a single motion, keeping head, shoulders, and body from twisting.
- Roll far enough for face to be angled toward ground.



Stabilize

- Position elbow and legs to stabilize head and body. Ensure there is no pressure on chest that restricts breathing.
- Make sure head ends up resting on extended arm and head, neck, and body are aligned.
- If person has been seriously injured, do not move unless fluids are in airway, or you need to leave to get help.

Pain, Severe Pressure, or Discomfort in the Chest



Acute coronary syndrome (ACS) occurs when there is reduced blood flow to the tissues of the heart. Often described as a heart attack, ACS is a serious condition that can result in significant damage to the heart.

Someone with ACS will generally experience pain, pressure, or discomfort in the chest, although women often do not experience chest pain and may describe indigestion, weakness, or fatigue. Shortness of breath, nausea, and lightheadedness can also occur. The person may experience pain in the arms or back. The person's skin may become pale, cool, and sweaty.

A person who has had previous heart problems is at risk for reoccurrence. Ask the person or any bystanders about prior problems, or medications being taken.

If you suspect a heart-related problem, do not try to transport the person to a hospital yourself. Activate EMS immediately, even if the person does not want you to. While waiting for EMS to arrive, follow these guidelines:

- If an AED is available, have someone get it so that it's nearby if needed.
- Allow the person to find the most comfortable position in which to breathe.
- Loosen tight clothing.
- Calm, comfort, and reassure the person.

- A person who is having a heart attack may deny it. This is a common occurrence in this situation. Accept it, but never let this alter your approach to care.
- The early administration of aspirin can be life-saving for a person having a heart attack. Encourage the person to chew and swallow 1 adult (325 mg), or 2 to 4 low-dose (81 mg) “baby” aspirin.
- Do not encourage aspirin use if the person has an allergy to aspirin, evidence of a stroke, a recent bleeding problem, the pain does not appear to be related to the heart, or if you are uncertain or uncomfortable with giving the aspirin.
- Someone with a heart condition may carry a prescribed medication known as nitroglycerin. If so, assist the person in the self-administration of it.



Whenever a heart attack is suspected, be prepared for the possibility of sudden cardiac arrest, and the need for CPR and the use of an AED. Continue to reassure the person until another provider or EMS personnel take over.

HEART DISEASE

Heart disease, through heart attacks and strokes, is the leading cause of death for men and women in the United States. Statistics indicate more than 1 in 4 deaths was related to heart disease; half of the deaths were women.

A healthy lifestyle can lower the risk of heart disease:

- Follow a healthy diet to prevent or reduce high blood pressure and high blood cholesterol
- Maintain a healthy weight
- Control alcohol intake
- Don't smoke
- Exercise regularly



Knowledge Check

True or false? A person who is having a heart attack may deny it.

MEDIC First Aid

MEDIC FIRST AID International, Inc.
1450 Westec Drive
Eugene, OR 97402 USA
800-447-3177 ■ 541-344-7099 ■ 541-344-7429 fax
hsi.com/medicfirstaid

BasicPlus

CPR, AED, and
First Aid for Adults



Health & Safety Institute
We Make Protecting and Saving Lives Easy™
MEDIC First Aid is a member of the HSI family of brands.