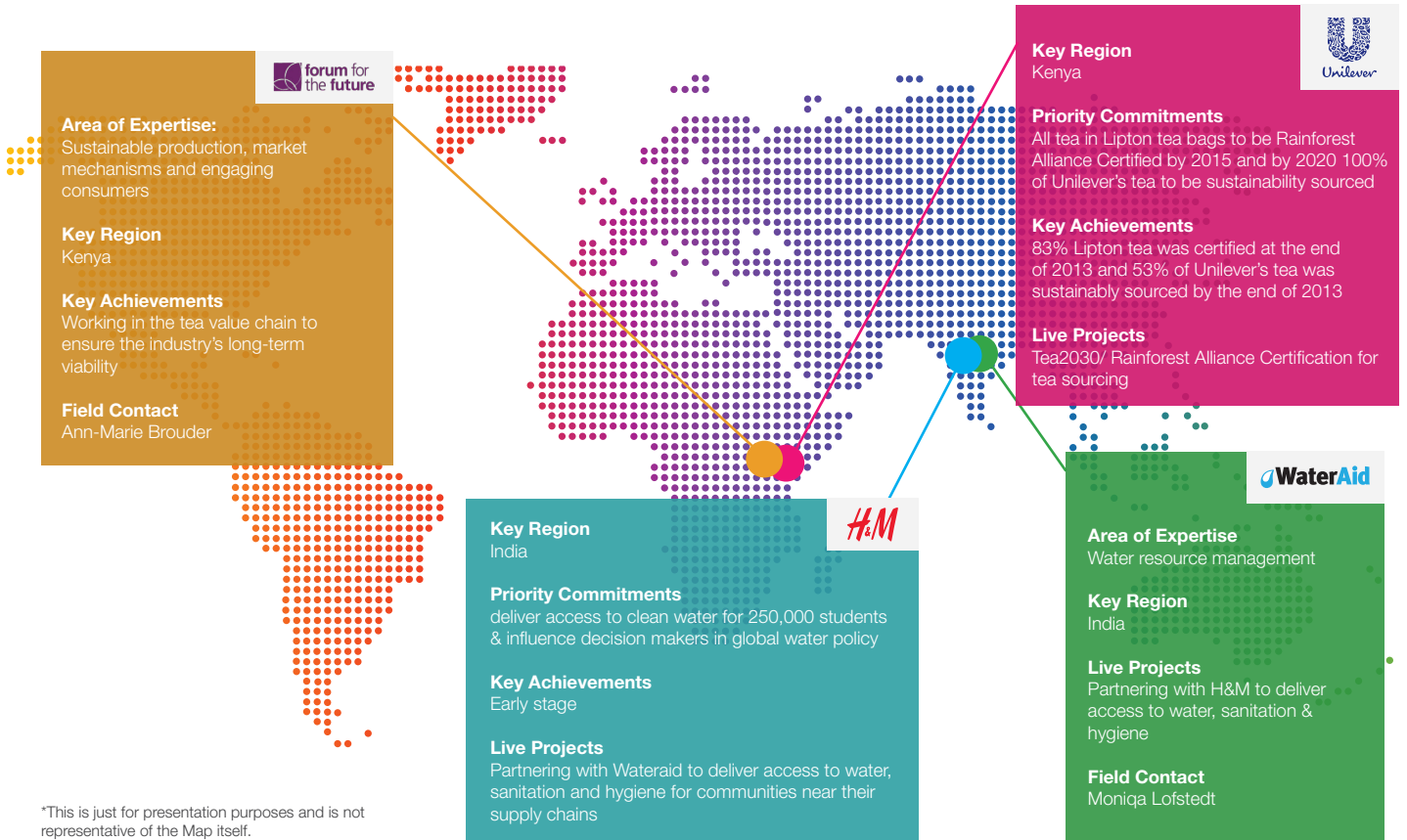


THE 2DEGREES GLOBAL COLLABORATION MAP



WHAT IS IT AND WHO IS IT FOR?

We all know that there are a wealth of sustainability focused initiatives happening across the world, both not for profit and commercial, in multiple sectors.

And yet, the speed at which things happen, and the global scale of many initiatives, makes it difficult and time consuming to locate potential collaboration opportunities and to identify the right partners to share your efforts and work with.

With this in mind, 2degrees has designed The Global Collaboration Map - a home for all the sustainable business achievements and priorities of major corporates, NGOs and consultants, which will pin point and detail the nature and location of focus and expertise.

By using the Map you will know at a glance where the necessary resources and knowledge are for your business and supply chain, and be able to identify key collaboration projects available for you to work with.

The Map will provide a live, crowdsourced and interactive home for the world's leading sustainable business achievements and priorities and will become a critical tool for those looking to manage social and environmental risk within their business and across their supply chain.

TIMELINE FOR LAUNCH OF THE GLOBAL COLLABORATION MAP

- Recruitment of partners and data collection will begin in Q1 2015.
- We'll then use our powerful, global network to couple the information provided, with insight from NGOs and stakeholders operating at various levels of supply chains, to analyze the data and produce an initial map of key projects happening globally.
- The first phase of the Map will be launched at 2degrees Live: Supply Chain Summit (6th March 2015 in London).
- The Map will then be shared and promoted globally through 2degrees (45,000+ members) and via social media – reaching up to 250,000 others worldwide.
- The aim is to then continuously develop the Map, crowd-source and filter the data, and begin to run collaboration sessions to connect up the people and initiatives that should be working together.

RAISE YOUR PROFILE

To be distributed both through the 2degrees Community of 45,000 sustainable business professionals and influencers and, through our extensive social media channels and partnerships, the map is an exciting and unique opportunity for you to raise the profile of your organization's achievements, initiatives and priorities.



45,000 Members



30,200 Social members

HOW TO GET INVOLVED

Participating is easy, both in terms of time and resources required.

1

2degrees will provide a simple 3 question survey that will take a few minutes to complete. We would request that you confirm the level at which you'd like to participate at this stage (see below).

2

We will analyze & crunch all the data to produce an initial map of key sustainable business projects/priorities happening globally.

3

On the day of launch, 6th March 2015, your company will receive an update of what opportunities exist for you to collaborate with (providing they/you choose to reveal your identities). The cost of the report will be included in the delegate cost of the event (just £250 before the end of January). You will also receive alerts throughout the year should additional collaboration opportunities become available with new participants.

4

On your approval of the results, we will actively promote the Map and your achievements via our channels that include thousands of senior sustainable business stakeholders and influencers worldwide.

VALUABLE, EASY, SAFE

We are aware of how delicate and sensitive some operational information can be. For this reason, we designed the tool to be as safe as possible for those corporations who decide to participate.

Firstly, the Map will report only publically available information about your company's achievements or commitments and the general location of their impact.

Secondly, you can submit information anonymously. This will avoid your company logo appearing on the Map, but will allow you to still benefit from the private updates on possible collaborations, if you attend the 2degrees Live: Supply Chain Summit on the 6th March.

It is free to simply participate in the Map and you do not have to attend the event. However, only event attendees and partners will receive the insight updates.



To find out more about how you can get involved in The Global Collaboration Map please contact:

Will Fitzjohn
email: willfitzjohn@2degreesnetwork.com
tel: 01865 597 653

www.2degreesnetwork.com