

KORE

DRAUGHT PROOFING & VENTILATION



A Product of **AIRPACKS**

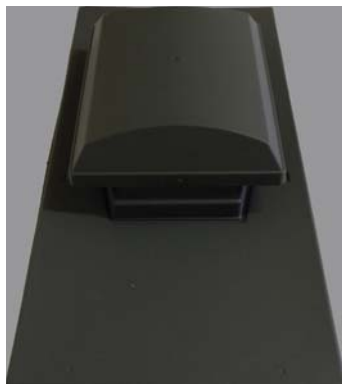
K7000 Circular Soffit Ventilator



Primarily designed as a refurbishment product, the K7000 when fitted at 250mm centres permits entry of airflow equivalent to a continuous opening of 10,000mm². Each ventilator is 70mm in diameter. Available in white, brown and black finishes, the K7000 provides a free ventilation area of 2,500mm².

K5 Slate Vent

The K5 slate vent features a low-profile, projecting only 85mm above the roof surface. Provides a free ventilation area of 20,000mm². Available in slate grey.



VENTILATION

KORE K20 Universal Tile Vent

For pitched roof ventilation. Suits most concrete interlocking roof tiles. Can be used to ventilate roof voids or as a terminal for soil and ventilation pipes. Also supports mechanical extraction systems. Provides a free ventilation area of 20,000mm².

KORE K15 Universal Tile Vent

Provides a free ventilation area of 15,000mm².

Available in grey and brown finishes.



K10 Slate Ventilator

Available in a slate grey finish, the K10 slate ventilator features a slimline design. The K10 provides a free ventilation area of 10,000mm² when spaced at 1 metre.

VENTILATION



PVC Hit & Miss Vent

Available in a 9" x 6" size (228mm x 152mm). Provides a free ventilation area of 9,000mm².

PVC Louvre Vent with Flyscreen

Available in a 9" x 6" size (228mm x 152mm) with or without flyscreen. Provides a free ventilation area of 8,000mm².



Circular Push in Vent

Available in 165mm size to fit 4", 5" and 6" tubes with self locking spring clips. For internal and external use. Removable flyscreen for gas appliance ventilation. Features a low-profile design. Provides a free ventilation area of 10,000mm².



VENTILATION

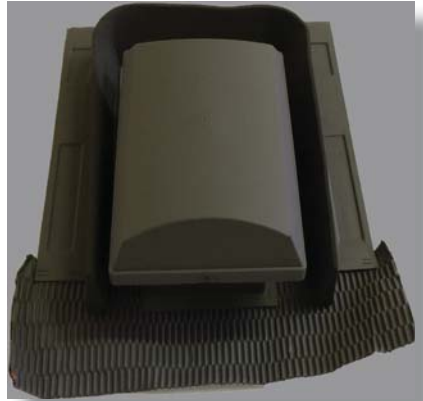
K5 Universal Tile Vent

The K5 universal tile vent is available in brown, terracotta or grey finishes.

Provides a free ventilation area of 20,000mm².

K3 Universal Tile Vent

K3 version also available providing a free ventilation area of 10,000mm².



KORE Drill Proprietary Vent 5"

The KORE Drill proprietary vent is available in brown, white and terracotta with a white internal grille 14" in length (350mm). Allows air to be pulled through by appliance while in operation. The vent provides a free ventilation area of 10,000mm² without baffle and 7,000mm² with baffle.



Letterbox Seal



Letterbox seals can be used in a vertical or horizontal application.

Options include:

- White or brown colour
- 2 and 4 hole
- Single and double brush

Door Bottom Draughtproofing

UPVC DBB for use on the bottom of timber doors. Available in:

- White and brown finishes
- Wide range of sizes



E Strip

For use on loft hatches, trap doors, wooden external doors and wooden casement windows. Available in white and brown finishes.



DRAUGHTPROOFING

P Strip

For use on loft hatches, trap doors, wooden external doors and wooden casement windows. Options include white and brown finishes.



Q-Lon Retro 21B

For use as a door and perimeter seal on external and internal doors, on badly warped timber and casement windows: Available in white and brown finishes. Guaranteed Q-Lon stamped and UV-stabilized material.

Q-Lon Retro B

For use on the perimeter of timber casement windows, vertical sliding sash timber windows, head and jamb of internal doors, loft hatches and trap doors. Available in white and brown finishes. Guaranteed Q-Lon stamped and UV-stabilized material.



DRAUGHTPROOFING



Hatch Door Hooks & Eyes

For use on hatches to fasten attic door to stop. Available in 2" and 3" sizes.

Advanced Silver Tape

For use on pipe insulation.



KORELOFT

KORE Loft is an insulated attic flooring system. The most popular thicknesses include:

Overall Thickness
1220mm x 450mm x 113mm
1800mm x 500mm x 113mm

*Other thicknesses available upon request



INSULATION

KORE

PIPE INSULATION

KORE pipe lagging is a durable and economical solution to reduce heat loss from pipes and prevent pipes from freezing during the winter months.

Pipe lagging is available in a range of sizes manufactured by extrusion of expanded polystyrene material:

- Class P fire rating
- Available in improved thermal conductivity 0.034 W/mK
- Relevant sizes exceed Water Byelaw 49 requirements
- BSI Approved Product: exceeds the requirements of BS 7523: 1991
- Ideal for thermal insulation of pipe work in domestic applications
- Rot-proof, odourless and non-hygroscopic
- Made for easy application

Pipe Dimension	You Need	Units Sold
12mm (1/2")	15mm x 25mm - 2m Lengths	100m/Box
12mm (1/2")	15mm x 19mm 2m Lengths	134m/Box
19mm (3/4")	22mm x 19mm - 2m Lengths	108m/Box
25mm (1")	28mm x 19mm - 2m Lengths	96m/Box

*Other sizes available upon request



Cold Water Tank Jackets

KORE cold water tank jackets are ideal for insulation of cold water tank of all types. Available in a range of sizes, the jacket is supplied with fitted lids as standard together with two lengths of heavy duty fixing tape for easy application. Approved by SEAI for use under the Better Energy Homes Scheme and the Better Energy Warmer Homes Scheme.



The cold water tank jacket's feature:

- 80mm nominal thickness fibre infill
- Heavy duty fixings of tensile strength not less than 40N
- 100 micron flame retardant covering material
- Complete fitting instructions with every jacket



Sizes Available	Unit of Sale
18" x 12" x 12" Jacket	20 per pack
29" x 22" x 22" Jacket	10 per pack
38" x 27" x 27" Jacket	5 per pack
48" x 24" x 24" Jacket	5 per pack

TANK JACKETS

Hot Water Tank Jackets



Ideal for insulation of heat water cylinder of all types and available in a range of sizes. Easy application with eyelet incorporated with one top tie cord and four lengths of heavy duty fixing tape.

Suitable for all types of cylindrical hot water storage tanks. Comes complete with fitting instructions.

Sizes Available	Unit of Sale
30" Height x 18" Diameter	6 per pack
36" Height x 18" Diameter	6 per pack
42" Height x 18" Diameter	6 per pack



KORE
Insulation & Energy Saving Solutions

T. +353 494336998

F. +353 494336823

E. info@kore-icf.com

W. www.kore-system.com

For more information on KORE products visit the website
or contact our sales team today



@KoreSystem

www.facebook.com/KOREIreland

Airpacks Ltd t/a KORE
The Green
Kilnaleck
Co. Cavan