



Helander Metal Spinning Company

All Spun Metal Products

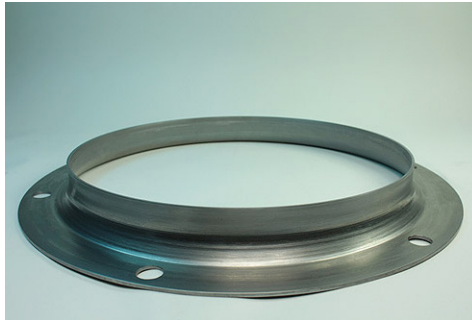
An ISO 9001:2008 & AS9100 Rev C. Registered Company

Steel Housings for Street & Sanitation Vehicles

In order to manufacture housings for street and sanitation vehicles, Helander Metal Spinning Company relies on a combination of spinning, welding, and machining processes. Steel housings made through these processes have the required structural integrity to handle the demanding environment and conditions found in the sanitation and trucking industry.

Working with steel and stainless steel in thicknesses ranging from 0.060" to 0.375", we use CNC turning and milling as our primary cutting methods. Housings made through spin forming are efficiently produced with minimal tooling costs. Our components meet the exacting standards of our clients as well as our own. Tolerances of ± 0.020 " are typical for these housings. Utilizing our top-quality capabilities enables us to provide the highest quality products.

As the leader in the metal spinning industry, Helander has the experience and skill to fabricate intricate metal components for a wide range of applications. The hardness, tensile strength, and resistance to fatigue make our components durable and reliable.



Flanged Steel ring used on a street sweeper. 24" diameter X 2.00" height X 0.170" thick steel.



Steel ring housing used on sewer cleaning equipment. 7.00" wide X 42.00" diameter X 0.154" thick steel.

Specifications for Steel Housings

Capabilities Applied/Processes	Spinning, Welding, Machining
Tightest Tolerance	(± 0.020 ")
Material Thickness	0.060" to 0.375"
Cutting Method	CNC Turning & Milling
Material Used	Steel and Stainless Steel
Industry for Use	Street Trucks
Typical Volume	100pcs to 5000pcs
Typical Delivery Time	4 to 12 weeks
Delivery Location	International
Typical Tooling Cost	\$500.00 to \$5000.00