



Delivering “Well-Rounded” Solutions

PRG is your partner in productivity

The Company

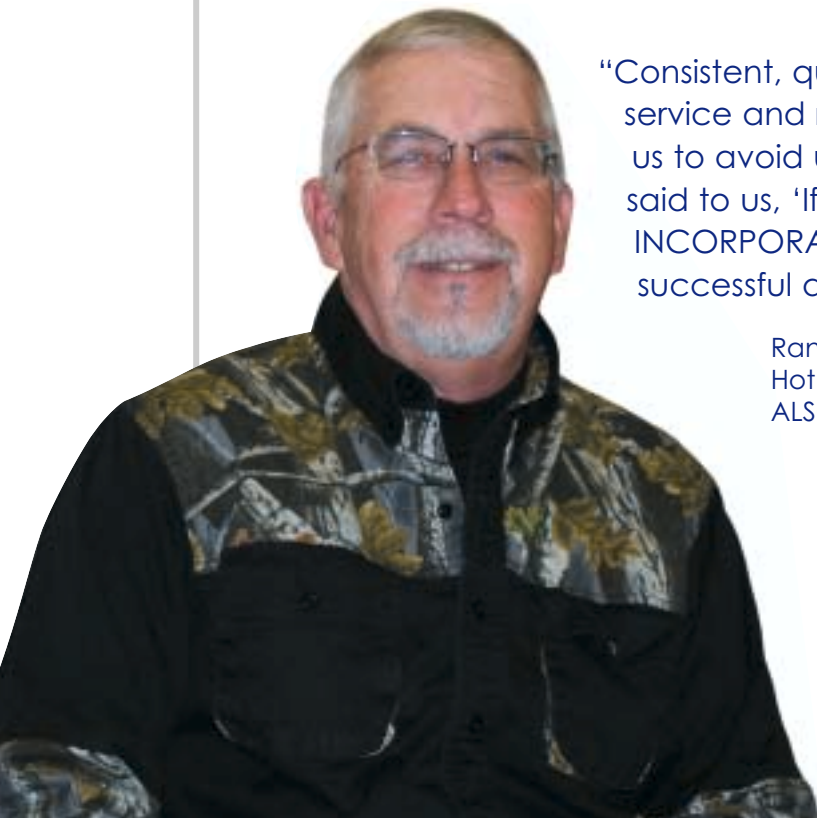
ALSCO METALS INCORPORATED, of Richmond, Virginia, services the building products industry with gutters and soffits, among other materials. Precision Roll Grinders grinds ALSCO's rolls from both the hot and cold mills.

The Problem

A variation in ALSCO's process reduced plant efficiency — and increased day-to-day operational costs.

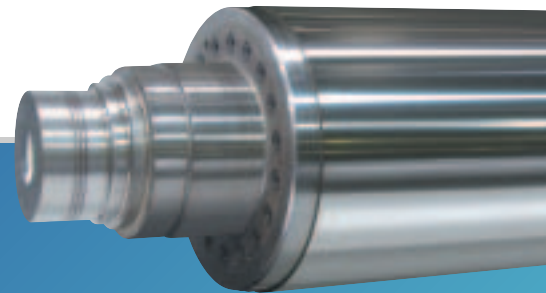
PRG's Solutions

PRG's eight-year relationship with ALSCO, constant interaction and attention to detail collectively led to the testing of the variation found in ALSCO's process. PRG's continued pro-activeness, regular on-site visits and problem-solving approach have helped ALSCO remain a leader in the building products industry.



“Consistent, quality grinds, emergency weekend service and remarkably quick turn-around times allow us to avoid unscheduled downtime. PRG has often said to us, ‘If we work hard to make ALSCO METALS INCORPORATED's business successful, PRG will be successful as a result.’”

Randy Lewis
Hot Mill Manager
ALSCO METALS INCORPORATED



For total roll care, no one else even comes close™

To learn more about how PRG can solve your problems — as well as help you achieve the highest levels of productivity, day after day, year after year — please call our nearest location or visit www.precisionrollgrinders.com

Industries served

- Aluminum
- Chocolate
- Flooring
- Food Processing
- Forest Products
- Ink
- Nonwovens
- Paper
- Plastic
- Rigid Film
- Rubber
- Metals
- Specialty Metals
- Steel
- Turbine & Compressor



The Range of Roll Materials:

- Brass
- Carbide Coated
- Ceramic
- Chilled Cast Iron
- Chrome
- Composite
- Copper
- Engraved
- Forged Steel
- Granite
- Polyurethane
- Rubber
- Stainless Steel
- Steel

Services:

- Custom Roll Grinding (straight, crowns, tapers)
- Chrome Plating
- Computer-Controlled Special Profiles
- Dynamic Balancing
- Dynamic Leak Testing
- Grooving or Regrooving of Rolls
- Honing
- Hot Grinding
- Journal Repair/Replacement
- Lathe/Machining
- Matte Blasting
- Metal Spraying
- New Carbide Coatings
- New Ceramic Coatings
- New Chilled Iron Rolls & Shells
- Nickel Electroplating
- Reshelling
- Roll Fabrication
- Roll Repair
- Suction Roll Rebuilding
- Superfinishing & Mirror Polishing
- Turning
- Variable Crown Roll Rebuilding
- Welding

PHYSICAL CAPABILITIES

Grinding Capacity

Diameter	2" to 144"	50 mm to 3,660 mm
Length	up to 600"	up to 15,240 mm
Weight	up to 240,000 lbs.	up to 109,091 kg

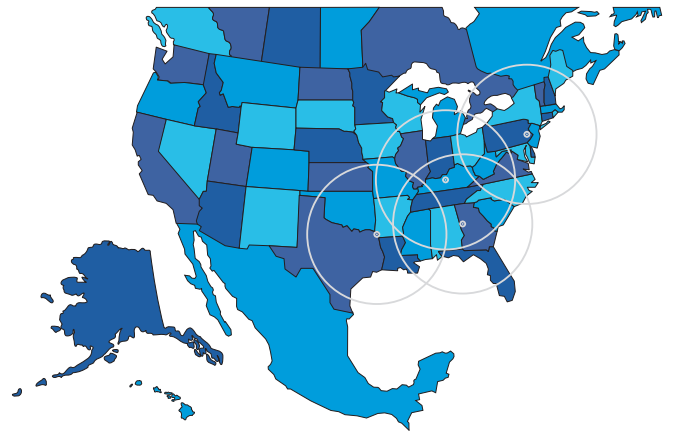
CNC Lathe Capacity

Diameter	66" over carriage 78.7" over ways	1,680 mm over carriage 2,000 mm over ways
Length	up to 840"	up to 21,336 mm
Weight	up to 200,000 lbs.	up to 90,910 kg

Tolerances:

Total indicated runout of face with respect to journals ± 20 millionths of an inch.
Surface finishes as fine as 1/4 micro inch Ra.

Multiple locations ...
to serve you better!



No one else even comes close™

6356 Chapmans Road
Allentown, PA 18106
Phone (610) 395-6966
Fax (610) 481-9130

400 Barnes Drive
Carrollton, GA 30117
Phone (770) 830-6323
Fax (770) 830-7024

200 Industrial Park Rd.
Lewisport, KY 42351
Phone (270) 295-4990
Fax (270) 295-4999

4000 East 19th Street
Texarkana, AR 71854
Phone (870) 216-4000
Fax (870) 774-6431

Authorized
Distributor for:



www.precisionrollgrinders.com