



Delivering “Well-Rounded” Solutions

PRG is your partner in productivity

The Company

Located in Ashland, Virginia, WHITE BIRCH PAPER's BEAR ISLAND DIVISION works directly with newspaper publishers. This fully integrated mill begins its process with wood chip inspection through production of high quality newsprint. The paper mill serves publishers including *USA Today*, *The Washington Post*, *DOW Jones' Wall Street Journal* and *The Richmond Times-Dispatch*.

The Problem

One year ago, BEAR ISLAND PAPER faced an internal emergency. In order to avoid a total shut-down, the mill needed six rolls serviced within a couple of weeks.

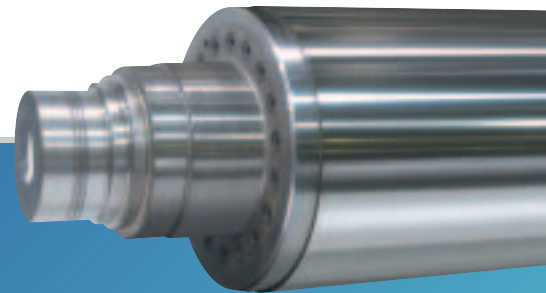
PRG's Solutions

Jim Manley, PRG's president, visited BEAR ISLAND PAPER, discussed the problem and situation, and promptly provided real solutions. PRG acted quickly, utilizing its four strategically located facilities, and finished the job in only one week.



“We require immediate service to ensure our clients are prepared to meet demanding deadlines. PRG delivers quite the turnover. They do such a fantastic job that we continue to do business with them year after year. I would recommend them to anyone.”

Jacques Beauchesne
Mill Manager
WHITE BIRCH PAPER — BEAR ISLAND DIVISION



For total roll care, no one else even comes close™

To learn more about how PRG can solve your problems — as well as help you achieve the highest levels of productivity, day after day, year after year — please call our nearest location or visit www.precisionrollgrinders.com

Industries served

- Aluminum
- Chocolate
- Flooring
- Food Processing
- Forest Products
- Ink
- Nonwovens
- Paper
- Plastic
- Rigid Film
- Rubber
- Metals
- Specialty Metals
- Steel
- Turbine & Compressor



The Range of Roll Materials:

- Brass
- Carbide Coated
- Ceramic
- Chilled Cast Iron
- Chrome
- Composite
- Copper
- Engraved
- Forged Steel
- Granite
- Polyurethane
- Rubber
- Stainless Steel
- Steel

Services:

- Custom Roll Grinding (straight, crowns, tapers)
- Chrome Plating
- Computer-Controlled Special Profiles
- Dynamic Balancing
- Dynamic Leak Testing
- Grooving or Regrooving of Rolls
- Honing
- Hot Grinding
- Journal Repair/Replacement
- Lathe/Machining
- Matte Blasting
- Metal Spraying
- New Carbide Coatings
- New Ceramic Coatings
- New Chilled Iron Rolls & Shells
- Nickel Electroplating
- Reshelling
- Roll Fabrication
- Roll Repair
- Suction Roll Rebuilding
- Superfinishing & Mirror Polishing
- Turning
- Variable Crown Roll Rebuilding
- Welding

PHYSICAL CAPABILITIES

Grinding Capacity

Diameter	2" to 144"	50 mm to 3,660 mm
Length	up to 600"	up to 15,240 mm
Weight	up to 240,000 lbs.	up to 109,091 kg

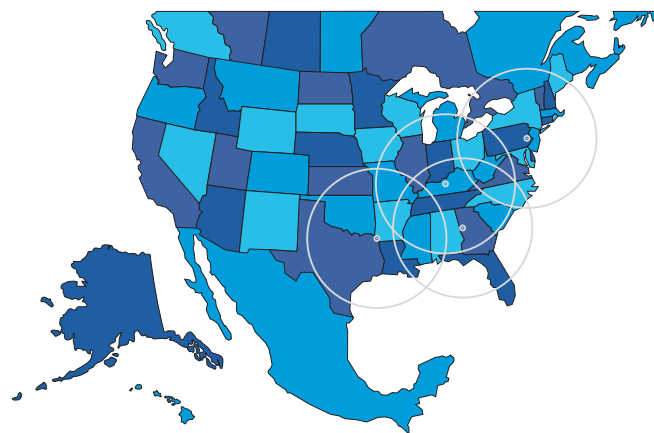
CNC Lathe Capacity

Diameter	66" over carriage 78.7" over ways	1,680 mm over carriage 2,000 mm over ways
Length	up to 840"	up to 21,336 mm
Weight	up to 200,000 lbs.	up to 90,910 kg

Tolerances:

Total indicated runout of face with respect to journals ± 20 millionths of an inch.
Surface finishes as fine as 1/4 micro inch Ra.

Multiple locations ...
to serve you better!



No one else even comes close™

6356 Chapmans Road
Allentown, PA 18106
Phone (610) 395-6966
Fax (610) 481-9130

400 Barnes Drive
Carrollton, GA 30117
Phone (770) 830-6323
Fax (770) 830-7024

200 Industrial Park Rd.
Lewisport, KY 42351
Phone (270) 295-4990
Fax (270) 295-4999

4000 East 19th Street
Texarkana, AR 71854
Phone (870) 216-4000
Fax (870) 774-6431



Authorized
Distributor for:

WALZEN
IRLE

www.precisionrollgrinders.com