

Origin

MAKING SENSE OF MEASUREMENT



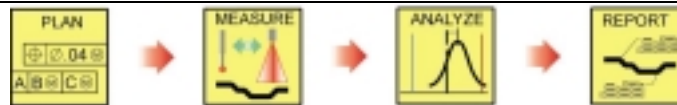
CheckMate Newsletter April 2007

Articles In This Newsletter

- Origin Webinar Session Scheduled April 26, 2007
- Customer Comments
- Print Multiple Layouts
- Technical Measures Inc. Hosting GD&T Course – April 23rd and April 24th

To print this newsletter, please go to <http://originweb.origin.com/public/newsletters.htm> and download the pdf version.

Please do NOT reply to this email. To Unsubscribe to this newsletter select Mailto and place **unsubscribe checkmate** in body of message. [Mailto:](mailto:)



Origin Webinar Session Scheduled April 26, 2007

Customer Comments

Origin International will be hosting a Webinar for customers with an annual support plan, Thursday, April 26th at 11:00am.

This Webinar will demonstrate a new application using the CMTHICK command that will be available in CheckMate 10.0.0035. Generating measurements on wall stock and channel openings are now made simple with CheckMate.

Topic: **Generating Measurements on Wall Stock Tabs, Channel Openings or Mating Parts**

Date: Thursday, April 26, 2007

Time: 11:00 am, Eastern Daylight Time (GMT -04:00, New York)

Session Number: 484 188 016

Registration password: This session does not require a registration password.

To attend this training session, you must first register for it.

Please click the following link to see more information about and register for this session.

Once you have registered for the session, you will receive an email message confirming your registration. This message will provide the information that you need to join the session.

<https://origin.webex.com/origin/k2/j.php?ED=96484922&UID=58833732>

For more information contact 1-800-269-2509 or send a message to this address:

sales@origin.com

Origin Support:

I wanted to thank each of you for the support today with the DMIS loader and the IGES outputs. This is exactly what we needed to get our project done. I should have some time tomorrow to update the patch and perform best-fit on the software. The Orlando group was all quite surprised by the support and especially the webex video that helped us with the project.

Ray Admire

Quality Engineering-Lead / CMM Programming
Lockheed Martin Missiles and Fire Control – Dallas

Dimensional Planner:

“We’re a long time CheckMate user and we’ve been using Dimensional Planner for months now” states Bob Stangane of Quality Model & Pattern in Grand Rapids, Michigan. “Our designers use it to specify the dimensional checks for gauge and fixture certifications. What we like most, besides the ease of use, is the ability to send the dimensional plans from CheckMate to our customers for re-use later. Our customers are able to re-use the dimensional checks for buy-off, as well as their annual re-certifications. We look at this as a value added service that increases customer satisfaction and gives us a competitive advantage.”

You have the ability to print multiple layouts in CheckMate. Use the Layout Wizard to create your layouts (**Label > Wizards > Create Layout**), this way you will be prompt for the printer type for the layout. The list of printers and plotters you have installed on your system will be listed.

Create your desired reports.

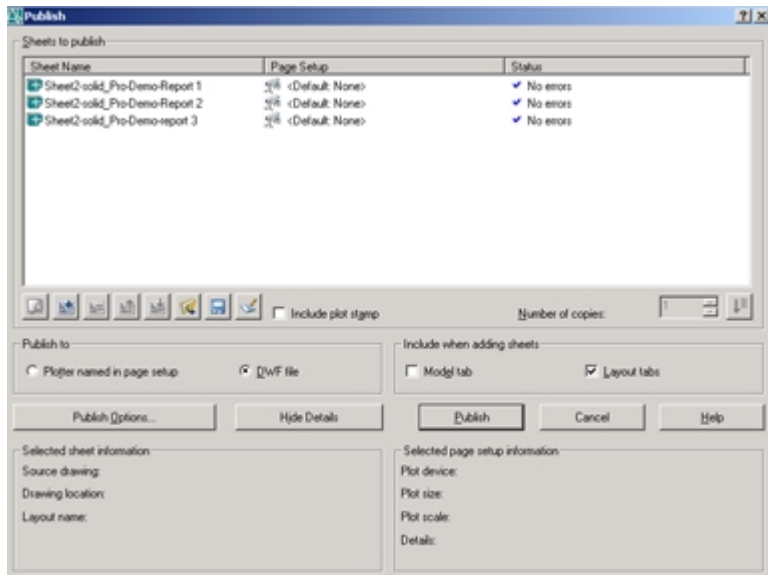
DWF – Each layout will print as individual file.

PDF – Each layout will print as individual file.

Printer – Each layout will print as individual file.

Once you get ready to publish your layouts, select **Output > Publish Multiple Layers**.

If you choose NOT to go with the “Plotter named in page setup”, you can select DWF file on the following page and all your layouts will print to one DWF file.



NOTE: When you are finished publishing your layouts, it is very important that you select **Output > Publish > Load CheckMate**.

Technical Measures and the International Institute of Geometric Dimensioning and Tolerancing will be hosting a course entitled “GD&T: Introduction and Fundamental Principles” on April 23rd and 24th in Oshawa, Ontario.

Dr. Greg Hetland who is the founder of the institute will be conducting the training. Dr. Hetland has 30+ years experience in the Aerospace, Defense and Commercial Industries with extensive expertise in the Mechanical and Precision Engineering fields as an Engineer, Manager, Consultant, Educator and Author.

This is an excellent opportunity to learn more about the effective and practical application of GD&T. The class size is limited so register early.

To find out more and to register for this training visit either www.iigdt.com or www.technical-measures.com