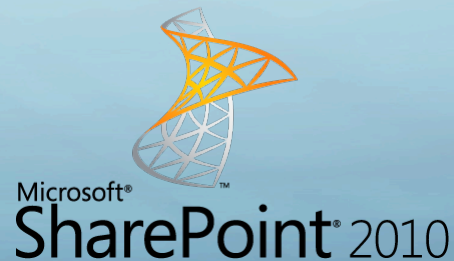




# KEEP CONTROL ON YOUR SHAREPOINT ENVIRONMENT WITH GSX SOLUTIONS



## Us

Created in 1996

Offices in the USA, UK, France and Switzerland

Specialized in Collaborative Environment supervision

One product to watch Microsoft SharePoint, Microsoft Exchange, and BlackBerry services at the same time



## Our Clients

200 Customers worldwide

Customers in more than 40 countries

Partner centric business model :

- Indirect channel (resellers, VARs and SIs)
- Strategic partners (Microsoft, RIM, IBM)



# SharePoint's Biggest Challenges

*Everything is about costs...*

**It has to Work!**

Any performance problem or worst, downtime problem can lead to dramatic business impact.

**Data must be under control!**

The uncontrolled development of its usage leads to an exponential increase of the data and serious problem of control and costs anticipation.

**Companies desperately need SharePoint experts...**

SharePoint usage have to be designed and optimized to reduce costs.

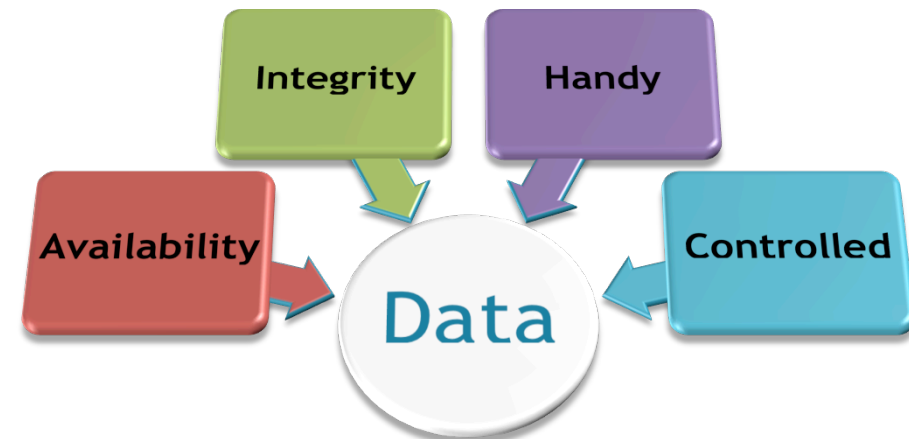
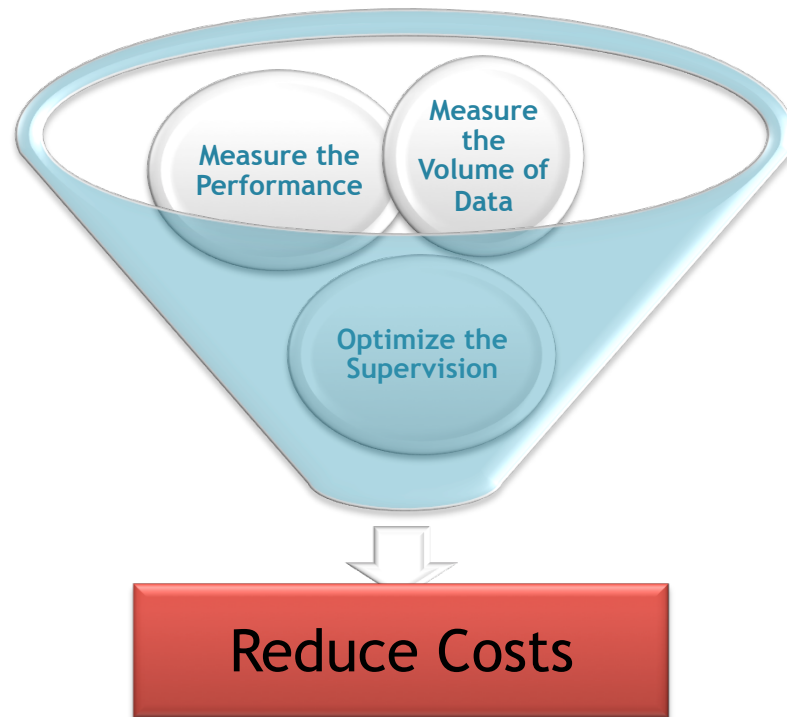
**...and should not use them for basic supervision tasks!**

Monitoring and Reporting are natively complex and required high administration time and skills.

# Avoid performance business impacts



GSX helps you optimize performance, costs and IT resources with its agentless solution GSX Monitor & Analyzer



Characteristics of the data to be trusted and cost effective



## Remote and Agentless Monitoring and Reporting Solution

- Manage easily the entire collaboration platform (SharePoint, Exchange, URLs, AD, BlackBerry servers and devices)
- Manage the performance and the capacity
- Manage the availability of the service delivered to the end user
- Manage volume and evolution of sites and data

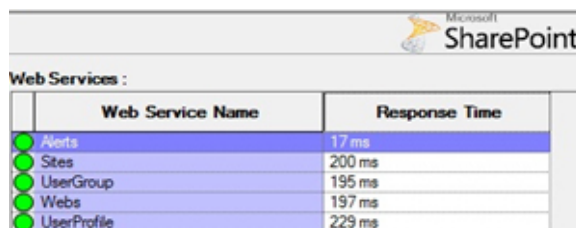
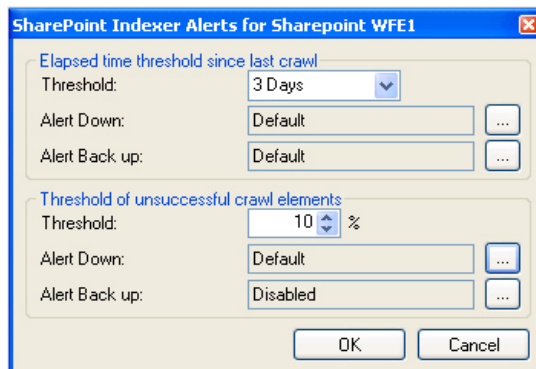
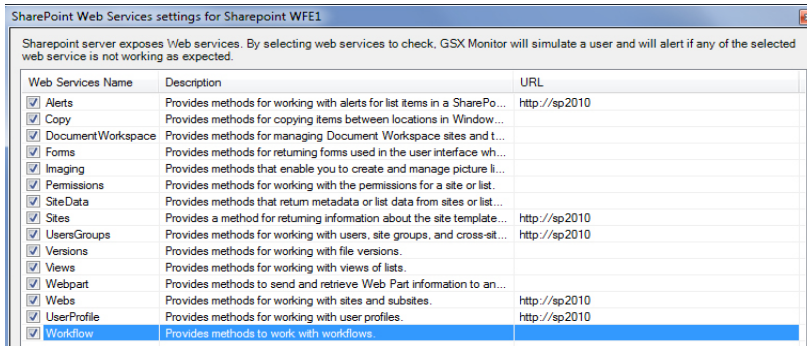
Let your SharePoint specialists use their time for high valuable tasks!

- Agentless
- Multiplatform
- Quick and easy to deploy, use and maintain
- Simulate users activities

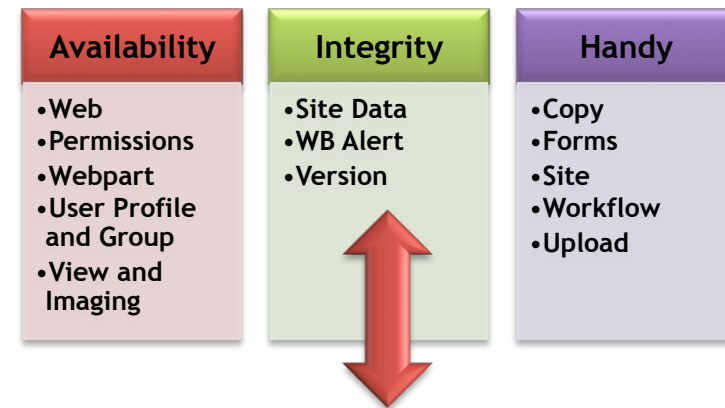
Microsoft Exchange, Microsoft SharePoint, BlackBerry Enterprise Server, BlackBerry Express, Lotus software

# Provide a secure and efficient service

*GSX performs user simulations to test the SharePoint functionalities that are responsible for an available, accurate and usable data.*



Web Service Name	Response Time
Alerts	17 ms
Sites	200 ms
UserGroup	195 ms
Webs	197 ms
UserProfile	229 ms



**Control the crawl of your documents to provide accurate data to your users**

**Manage the performance of each functionality in real time and anticipate user's issues**

# Simulate complex SharePoint Scenarios



GSX performs complex scenarios to test the real availability of the SharePoint functionality for your users.

Create a site  
Add blog post  
Add new Item  
Upload Document  
Create Meeting  
Search Services  
Resolve User Profile  
Test Excel Services

The screenshot shows the 'SharePoint Scenario Settings' window. On the left, a tree view lists scenarios: 'All Sharepoint Scenarios', 'Create site (1)', 'Add blog post (0)', 'Add new item (1)', 'Upload Doc (1)', 'Create Meeting (1)', 'Search Service (1)', 'Resolve User Profile (3)', and 'Test Excel Services (0)'. The main area displays a table of scenarios.

Configuration Alias	Domain	User name	Password	Scan Interval	Central Admin URL	Web Application
Create site on Central A	ent	admaud	*****	1 hour	http://gsxsp:555	http://gsxsp/site

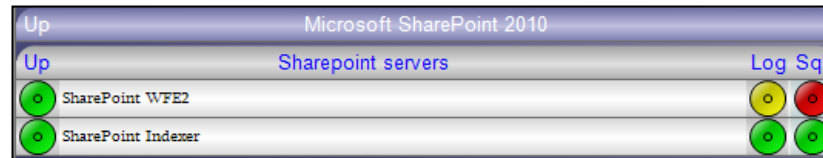
Below the settings table is a 'History' section with a table of execution results.

Scenario Date	Execution Time	Details
31.01.2012 10:43:04	n/a	Unable to connect to the SharePoint server.
30.01.2012 16:45:11	n/a	Unable to connect to the SharePoint server.
22.01.2012 03:02:21	10148 ms	The scenario completed successfully. The execution time exceeds the threshold.
22.01.2012 02:02:21	24478 ms	The scenario completed successfully. The execution time exceeds the threshold.
22.01.2012 01:02:20	11591 ms	The scenario completed successfully. The execution time exceeds the threshold.
22.01.2012 00:02:19	30044 ms	The scenario completed successfully. The execution time exceeds the threshold.
21.01.2012 23:02:19	23795 ms	The scenario completed successfully. The execution time exceeds the threshold.
21.01.2012 22:02:19	9583 ms	The scenario completed successfully.
21.01.2012 21:02:18	12005 ms	The scenario completed successfully. The execution time exceeds the threshold.
21.01.2012 20:02:18	10666 ms	The scenario completed successfully. The execution time exceeds the threshold.
21.01.2012 19:02:18	8545 ms	The scenario completed successfully.
21.01.2012 18:02:17	8364 ms	The scenario completed successfully.
21.01.2012 17:02:16	9026 ms	The scenario completed successfully.
21.01.2012 16:02:16	10233 ms	The scenario completed successfully. The execution time exceeds the threshold.
21.01.2012 15:02:15	8207 ms	The scenario completed successfully.
21.01.2012 14:02:15	8865 ms	The scenario completed successfully.
21.01.2012 13:02:15	9233 ms	The scenario completed successfully.
21.01.2012 12:02:14	10153 ms	The scenario completed successfully. The execution time exceeds the threshold.
21.01.2012 11:02:13	8326 ms	The scenario completed successfully.
21.01.2012 10:02:13	8649 ms	The scenario completed successfully.
21.01.2012 09:02:12	9704 ms	The scenario completed successfully.
21.01.2012 08:02:11	8909 ms	The scenario completed successfully.
21.01.2012 07:02:11	8707 ms	The scenario completed successfully.
21.01.2012 06:02:11	8251 ms	The scenario completed successfully.
21.01.2012 05:02:10	9064 ms	The scenario completed successfully.
21.01.2012 04:02:09	11512 ms	The scenario completed successfully. The execution time exceeds the threshold.

**Set your own threshold and be alerted in case of any performance issues!**

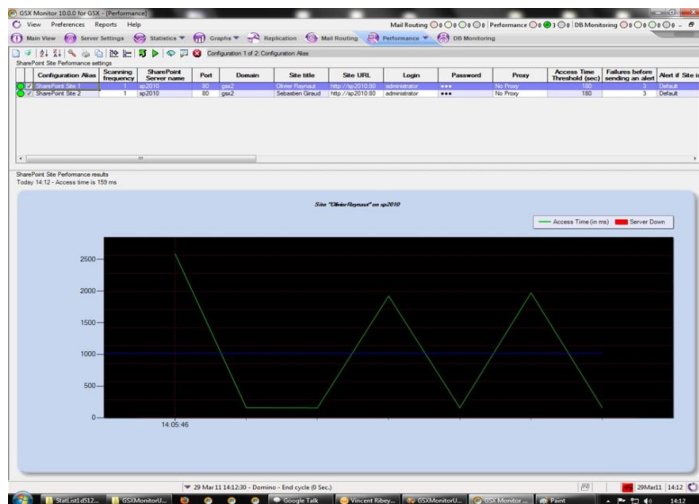
**Be aware of potential problem before your end users complain!**

# Avoid Performance Business Impacts



(from left to right: users simulation of the web services  
LED, log files LED, SQL connection LED)

GSX Monitor gives an instant view of all the critical indicators allowing administrators to prevent any Business Impact



GSX calculates and presents the Performance of the services delivered to the users on:

SharePoint functionalities (Web services)

SharePoint Sites



Compare the performance of your servers across multiple KPIs to define where to perform proactive actions



# Control the costs of your data

Content DB Information: ToCsv

Content DB name	Number of Sites	Size of Sites (MB)	Number of Docs	Size of Docs (MB)
SharePoint_AdminContent_9016b7da-9cf-4fa0-a51e-71e9bf04aeb8	2	55	124	7229
WSS_Content	13	598	302	284498
WSS_Content_10081	1	31	225	21725
WSS_Content_10086	1	106	57	83468
WSS_Content_10087	1	4	2	35
WSS_Content_10088	0	0	0	0
WSS_Content_220bf3172c2d4504bbfa76ffc1b3ea69	1	7	8	566
WSS_Content_d8fc4b3a7a7643b88a659cda4baa70e6	1	6	25	2054
WSS_Content_MultiSites	2	9	10	676

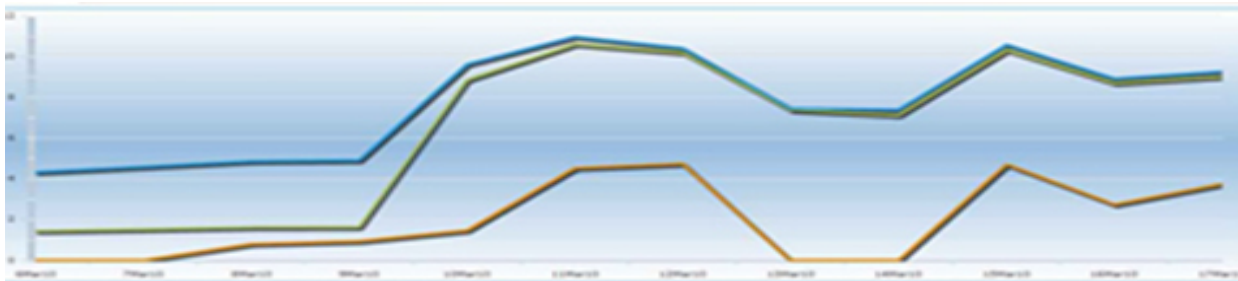
Find Next Find Previous

Real Time view of your Content DB to control the number of sites and their size

Sites Information for WSS\_Content: ToCsv

Site title	Description	Creation Date	Size (MB)	Number of Docs	Size of Docs (MB)
Mon site		26 May 10 15:24:4	6	0	0
Project Web App	Application Web Microsoft Project Server	31 May 10 09:47:0	12	35	0
TestFromCA		8 Jun 10 12:25:20	6	4	0
Jonathan Muller	Ceci est l'espace personnel de Jonathan Muller. Vous pouvez utiliser cet espace pour créer des	7 Sep 10 10:12:38	4	0	0
Sebastien Giraud	Ceci est l'espace personnel de Sebastien Giraud. Vous pouvez utiliser cet espace pour créer de	2 Jun 10 13:05:50	143	120	0
vincent ribeyrol	Ceci est l'espace personnel de vincent ribeyrol. Vous pouvez utiliser cet espace pour créer des l	1 Jul 10 15:42:01	4	0	0
Patrick Treve	Ceci est l'espace personnel de Patrick Treve. Vous pouvez utiliser cet espace pour créer des l	24 Sep 10 12:13:57	4	0	0
GSX2\ABuonaccorsi	Ceci est l'espace personnel de GSX2\ABuonaccorsi. Vous pouvez utiliser cet espace pour crée	21 Oct 10 09:58:58	49	21	0
Olivier Raynaud	Ceci est l'espace personnel de Olivier Raynaud. Vous pouvez utiliser cet espace pour créer des	14 Jun 10 10:40:06	5	7	0
GSX2\glandra	Ceci est l'espace personnel de GSX2\glandra. Vous pouvez utiliser cet espace pour créer des l	4 Jan 11 11:16:57	4	0	0
SharePoint Admin	Ceci est l'espace personnel de SharePoint Admin. Vous pouvez utiliser cet espace pour créer d	17 Sep 10 07:29:48	4	0	0

Real Time Picture of all the sites with critical volume of information



Make trends, and have a look to the expansion of data, sites, documents but also performance and availability of the service

# Platforms Real Time supervision

All your services  
at a glance!

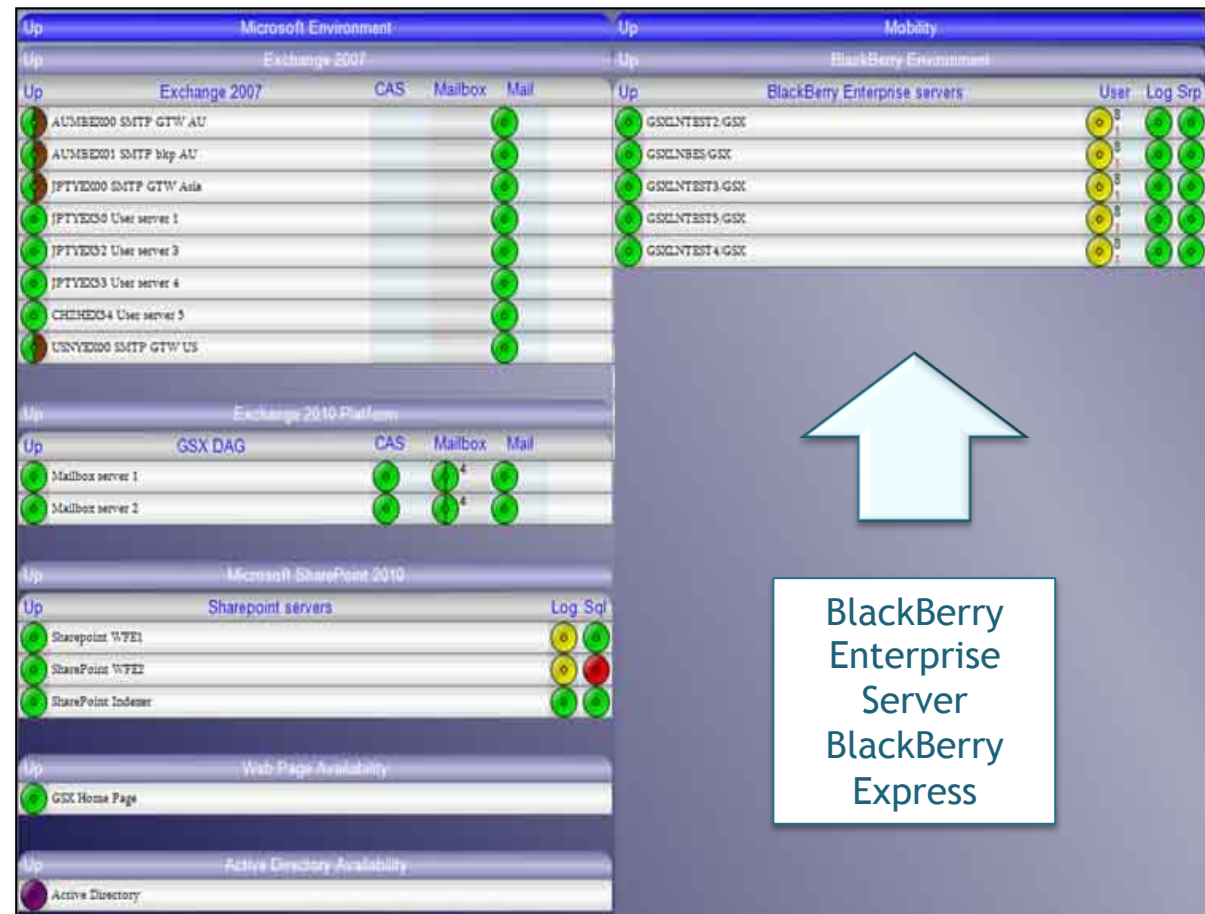
Exchange 2003  
and 2007

Exchange 2010

SharePoint  
2007 and 2010

URLs

Active  
Directory



BlackBerry  
Enterprise  
Server  
BlackBerry  
Express



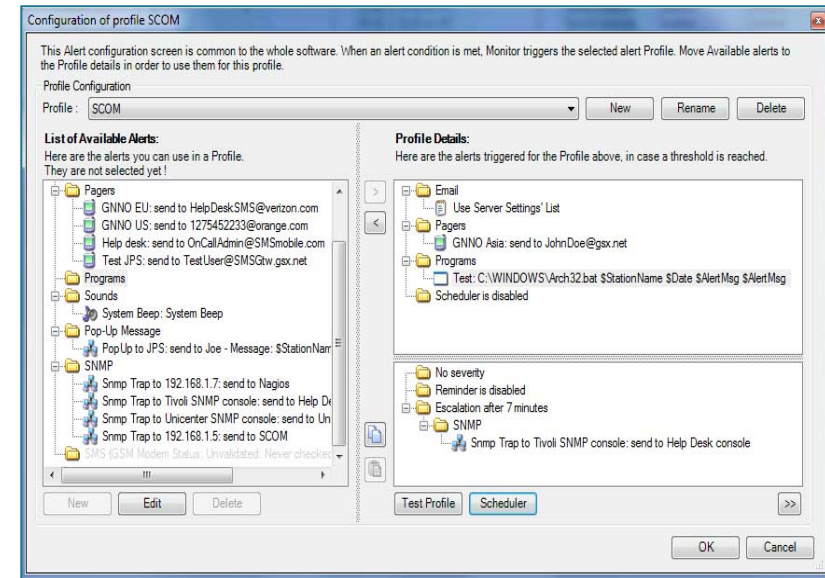


# Control and Manage your alerts!

Create as many alert profiles as you need and mix the way to be alerted!

Email, Pager, Popup, Program, Sound, SNMP traps, SMS

Alerts Dashboard, make easy reports on PDF or CSV



**GSX Analyzer**

Overview | Alerts | Statistics | Reports | Trends | Environment Health

Delimited period Start date: 02/03/2010 End date: 17/05/2011 Show: All Sort by: Date

	Arrival date	Date / Time	Event Name	Resource	First Down Time	Down For	Status	Status Details	Reminder	Escalation
T	15Apr10 14:58:26	15Apr10 14:58:25	BES up	GSXBES5-STANDBY	4Apr10 09:19:40	11d 5h 38m 45s	Resolved	GSX Admin On 17May11		
	15Apr10 14:57:45	15Apr10 14:57:44	Exchange Cluster down	Exchange Cluster 1	15Apr10 14:55:34	1m 9s	Opened	GSX Admin On 17May11		
	15Apr10 14:57:44	15Apr10 14:57:43	Exchange down	SVR_OUTBOUND	15Apr10 14:55:34	1m 9s	Resolved	GSX Admin On 17May11		
T	15Apr10 14:57:11	15Apr10 14:57:10	Network up	GSXLN206 - Domino BES	4Apr10 09:21:41	11d 5h 35m 29s	Opened	GSX Admin On 17May11		
T	15Apr10 14:57:11	15Apr10 14:57:10	Domino up	GSXLN206 - Domino BES	4Apr10 09:21:41	11d 5h 35m 29s	Resolved	GSX Admin On 17May11		
T	15Apr10 14:43:12	15Apr10 14:43:12	BES Carrier up	GSXLN901 - BlackBerry Ei	15Apr10 14:41:10	2m 2s	In Progress	GSX Admin On 17May11		
	15Apr10 14:41:14	15Apr10 14:41:13	BES Carrier down	GSXLN901 - BlackBerry Ei	15Apr10 14:41:10	0s	In Progress	GSX Admin On 17May11		
	15Apr10 14:40:12	15Apr10 14:40:11	BES Pending mail thresh	GSXLN901 - BlackBerry Ei	n/a	0s	Closed	GSX Admin On 17May11		
T	15Apr10 14:36:21	15Apr10 14:36:20	Network up	USBT0001 - Boston Clus1	15May09 10:30:28	335d 4h 5m 52s	Closed	GSX Admin On 17May11		
	15Apr10 14:35:24	15Apr10 14:35:23	Network down	USBT0001 - Boston Clus1	15May09 10:30:28	335d 4h 4m 33s	Closed	GSX Admin On 17May11		
T	15Apr10 13:11:10	15Apr10 13:11:10	No more BES Critical Use	GSXLN901 - BlackBerry Ei	n/a		Closed	GSX Admin On 17May11		
T	15Apr10 13:11:10	15Apr10 13:11:10	BES Carrier up	GSXLN901 - BlackBerry Ei	15Apr10 12:52:08	19m 2s	Closed	GSX Admin On 17May11		
	15Apr10 12:55:11	15Apr10 12:55:10	BES Pending mail thresh	GSXLN901 - BlackBerry Ei	n/a	0s	Closed	GSX Admin On 17May11		
	15Apr10 12:52:11	15Apr10 12:52:09	BES Critical User alert	GSXLN901 - BlackBerry Ei	n/a	0s	Closed	GSX Admin On 17May11		
	15Apr10 12:52:11	15Apr10 12:52:09	BES Carrier down	GSXLN901 - BlackBerry Ei	15Apr10 12:52:08	0s	Closed	GSX Admin On 17May11		

# Full Integration with SCOM



## GSX MONITOR Management Pack for SCOM

Instantly integrates GSX Monitor's capabilities straight into your SCOM Administration tab.

Communicate automatically with your centralized Incident Management Platform and Team

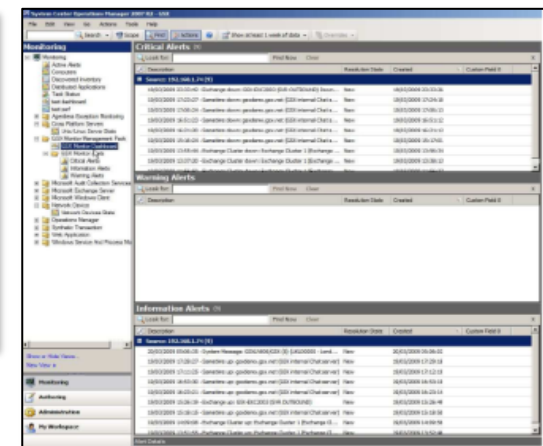
**Profile Details:**  
Here are the alerts triggered for the Profile above, in case a threshold is reached.

- Email
  - Default List: gsxmonitor@gsx.net
  - Scheduler is disabled
- SNMP
  - SNMP Trap: send to 192.168.1.6

Facilitate and unify your reporting in forwarding GSX Monitor information to your global monitoring console  
Provide scenarios and Response time threshold alerts on Web Service  
Easy reporting on any critical SharePoint KPIs and Size evolution

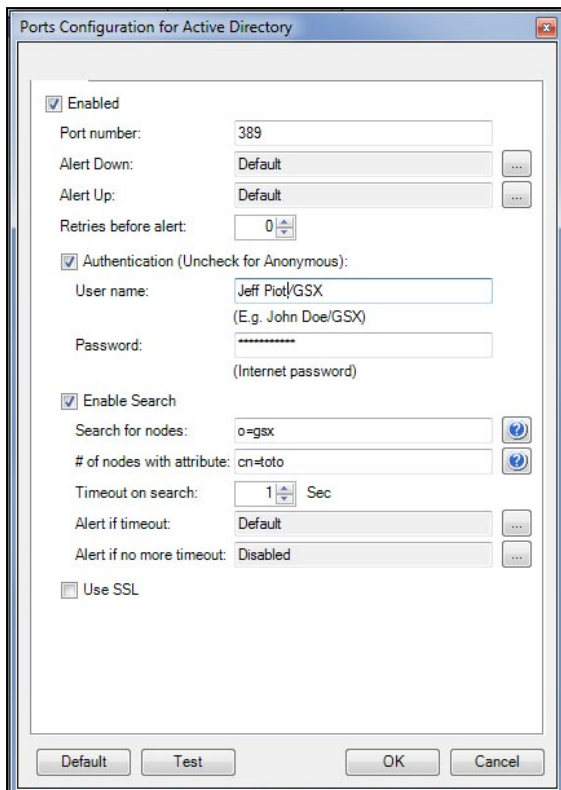
Capture GSX Monitor's SNMP traps and display them into SCOM monitoring window under:

- Critical Alerts
- Warning Alerts or



# Manage your entire environment: Active Directory and URLs

Check the availability, the response time and the redirection of your Webpages



Ports Configuration for Active Directory

☒ Enabled

Port number: 389

Alert Down: Default

Alert Up: Default

Retries before alert: 0

☒ Authentication (Uncheck for Anonymous):

User name: Jeff Piot/GSX  
(E.g. John Doe/GSX)

Password: \*\*\*\*\*  
(Internet password)

☒ Enable Search

Search for nodes: o=gsx

# of nodes with attribute: cn=toto

Timeout on search: 1 Sec

Alert if timeout: Default

Alert if no more timeout: Disabled

☐ Use SSL

Default Test OK Cancel



Check the availability of the Active Directory Service

GSX simulates a user connected on the Active Directory. GSX checks a node of the Active Directory and counts all the attributes in this node. If the results match with the reality, you know that your Active Directory is available for your users

# Control your entire environment: Exchange and BlackBerry



Because your Exchange servers are critical  
Because each role has its own monitoring needs  
Because the reporting is critical

Up Exchange 2007				
	CAS	Mailbox	Mail	
AUMBEX00 SMTP GTW AU				
AUMBEX01 SMTP bkp AU				
Up Exchange 2010 Platform				
	GSX DAG	CAS	Mailbox	Mail
Mailbox server 1			4	
Mailbox server 2			4	

Get easily performance and usage alerts and statistics for Hub, CAS Array, DAG, mailbox databases, mail routing scenarios, and all the protocols, volume, in order to prevent business issues

***For more information about Exchange and BlackBerry, check our dedicated Presentations!***

Because BlackBerry Servers and Devices have lots of connections with the Exchange Environment

Management of the service can be complicated natively or through dedicated management pack.

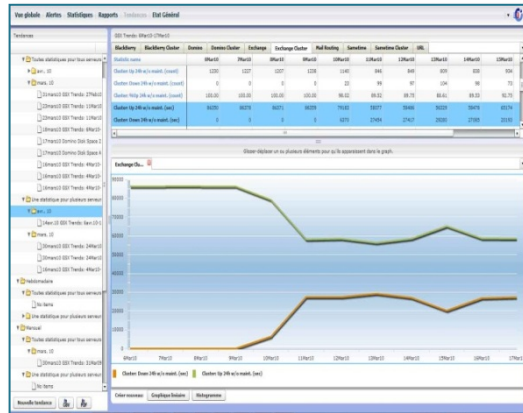
Up BlackBerry Environment				
Up BlackBerry Enterprise servers			User	Log Srp
	GSXLNTEST2/GSX		8 1	
	GSXLNBES/GSX		8 1	

From the same interface and still without any agent, be allowed to check Services, Users errors, Log file, SRP Connection, End to End tests from Exchange to devices, mail forward service, carriers, user management, etc.

Be alerted and trend the statistics you need to measure the performance of your services!



# Automate your Reporting



## Trends

Daily, weekly, monthly trends

On demand or automatic, per client, per servers, etc.

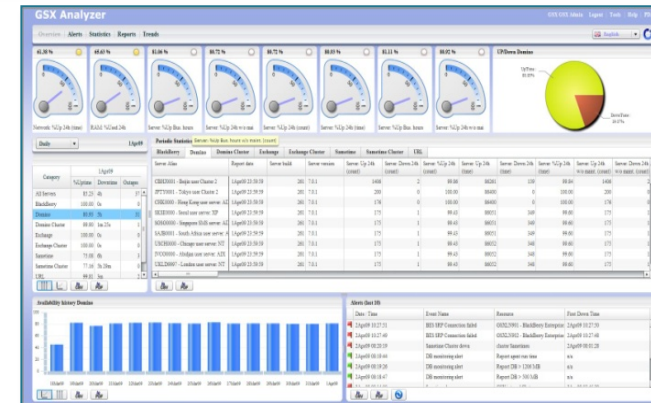
## Forecast your needs!



GSX makes your capacity planning predicting your needs and the health of your environment regarding your past statistics

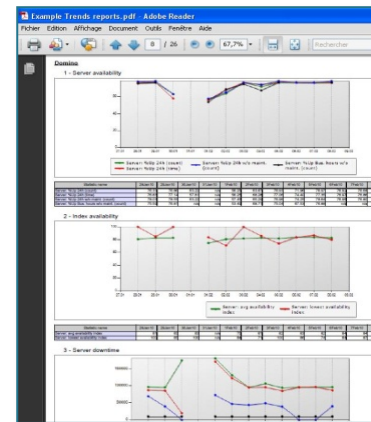
## Dashboard

Performance indicators, availability history, last statistics and alerts



## Automatic PDF

Less than 5 minutes to create fully customized reports to follow your SLAs and KPIs.





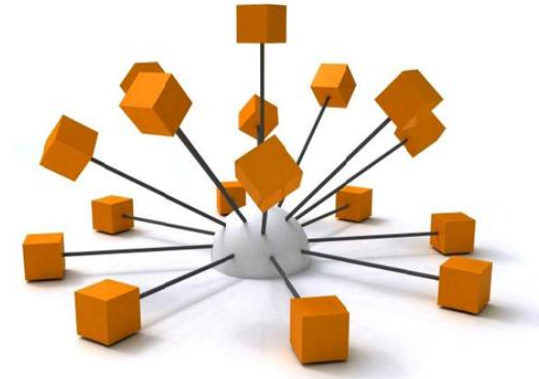


# GSX Customers



# Try it and keep it!

Download a free 60-day trial  
version on our Website.  
<http://support.gsx.com/>  
Full features and up to 15  
servers



Contact us if you need any  
support during the  
installation and  
configuration of your  
evaluation version

Your contact :

[sales@gsx.com](mailto:sales@gsx.com)

EMEA - ASIA

+ 41 22 735 82 40

+33 4 93 81 17 98

USA

+1 310 765 4139





## **GSX Solutions Headquarters**

36 Boulevard Helvétique  
1207 Genève, Switzerland

+41 22 735 82 40  
[sales@gsx.com](mailto:sales@gsx.com)

## **GSX Solutions North America**

240 Redtail Road  
Orchard Park, NY 14127

+1 310 765 4139  
[sales@gsx.com](mailto:sales@gsx.com)