



GSX Monitor & Analyzer

When end-users performance... ...Matters!



About GSX Solutions



- Founded 1996, Headquartered in Switzerland
- Offices in USA, UK, France, Switzerland, China
- Indirect channel across more than 40 countries

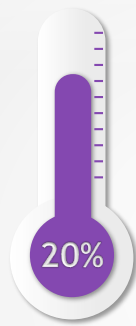


600 customers
In **40** countries

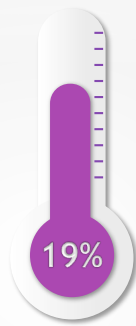
GSX Solutions at a Glance



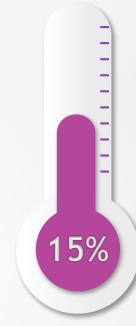
+ 30% of Fortune 500 are customers



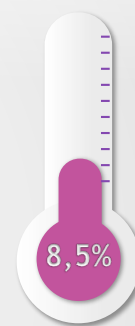
Banking Insurance



Manufacturing



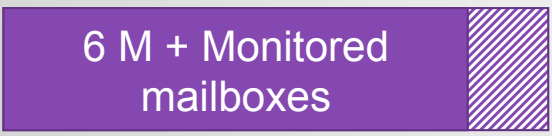
Consulting IT Services



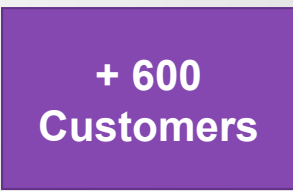
Consumer Goods and retail



Healthcare



6 millions mailboxes monitored By GSX Solutions



High customers satisfaction with over 90% maintenance renewal

Certifications and Recognitions



Customers References



The GSX Platform



GSX Agentless management platform
for unified collaboration applications



Reduces the TCO at both
CAPEX and OPEX levels



Fully exploit the productivity
benefits of collaboration



- Sits outside the server providing a simple to use solution
- Monitors entire collaboration infrastructure
- Analyses and identifies bottlenecks proactively
- Simulates traffic to enable preventive action
- Reports against business use SLAs

Consistent, high
quality end-user
experience

GSX For Microsoft Unified Communications



Microsoft Exchange & Exchange Online

Microsoft SharePoint

Lync (Summer 2014)



GSX for Microsoft Exchange



- Support for Exchange 2007, 2010, 2013 & Exchange Online
- Full Auto-discovery of your Exchange Online Organizations
- Discover and manage multiple organizations at multiple locations
- Simulate End-Users through End-User & Mail Routing Scenarios
- Manage the overall capacity of your Exchange Infrastructure in a Hybrid configuration
- Identify underutilized servers and load-balancing issues among servers and pinpoint bottlenecks in your organization in a Hybrid configuration
- Instantly detect and alert admins of bottlenecks across multiple locations



On-premise, Hybrid and Cloud Support

Advanced Synthetic Transactions

Services Availability and Server Statistics

Fully Integrated with SCOM, HP, Etc...

Forget Command Line Monitoring!



Exchange 2010 Real Time Overview

Exchange Overview for Small Hybrid Org

Mailbox Servers

- GSXMAIL
- GSXMAIL02
- GSXMAIL01

CAS Servers

- GSXMAIL
- GSXMAIL01
- GSXMAIL02

Hub Servers

- GSXMAIL
- GSXMAIL01
- GSXMAIL02

Scenarios

	On-Premises	Online
Mail Routing (5)	●	●
Open Mailbox (2)	●	●
Create Folder (2)	●	●
Create Task (2)	●	●
Create Email (2)	●	●
Create Meeting (3)	●	●
Download Attachment (2)	●	●
Search Item (2)	●	●
Resolve User (2)	●	●
Custom (3)	●	●

Spot Check Reports

	On-Premises
Mailboxes (2)	●
Public Folders (2)	●
ActiveSync Devices (1)	●

Exchange 2013 Real Time Overview

Exchange Overview for GSX 2013 LAB

Mailbox Servers

- 2013EXC01
- 2013EXC04

CAS Servers

- 2013EXC01
- 2013EXC02
- 2013EXC03

Scenarios

	On-Premises	Online
Mail Routing (3)	●	●
Open Mailbox (1)	●	●

Spot Check Reports

	On-Premises
Mailboxes (1)	●
Public Folders (1)	●
ActiveSync Devices (1)	●

Service Status Pop-up:

- **Protocols Service**
Last scanning was 7 Feb 14 08:56
Protocols service is Up
- **Mailbox Service**
Last scanning was 7 Feb 14 08:56
Mailbox service is Up
Number of Mailbox Database copies: 3
- **Transport Service**
Last scanning was 7 Feb 14 08:56
Transport service is Up
Queues in Active or Ready status:
2013EXC02\16690, 2013EXC02\Submission, 2013EXC02\Shadow\16678

Exchange 2010 Under the Hood!



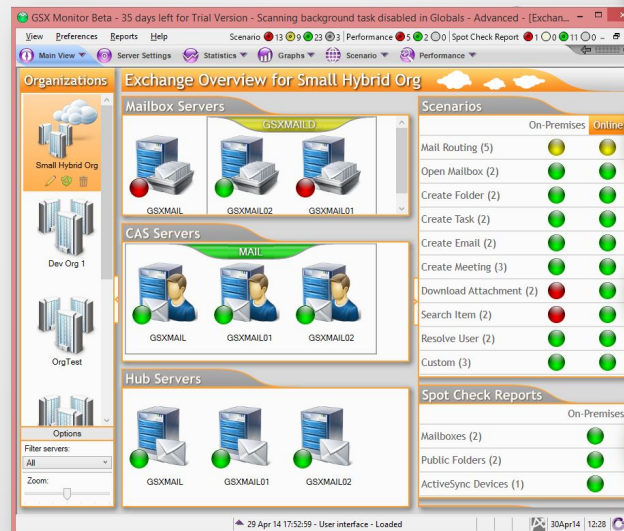
Discover and manage multiple Organizations at the same time

Mailbox Server, MAPI connectivity Mailbox Databases size and availability, DAG High Availability and Replication

End user Synthetic Connections (OWA, Active Sync, Outlook Anywhere, etc.), Exchange Autodiscover, CAS Array protocol latency and availability

Hub, Suspended and retry queue, threshold on delivery and unreachable queue, mail flow statistics reporting

Automatic monitoring of Windows services, Exchange Processes, Disk space, maintenance for any servers!



Mail Routing internal, external, hybrid tests and reports

End User Scenario on premise or online at the same time

Automatic reports on Mailboxes usage (Location, logon, size, quota and much more!)

Automatic reports on Public Folder (owner size, usage)

Automatic reports on Active Sync Devices: how many devices, what type, where, etc.

Exchange 2013 Under the Hood!



Discover and manage multiple Organizations at the same time

Mailbox Role server monitoring at the Service Level!

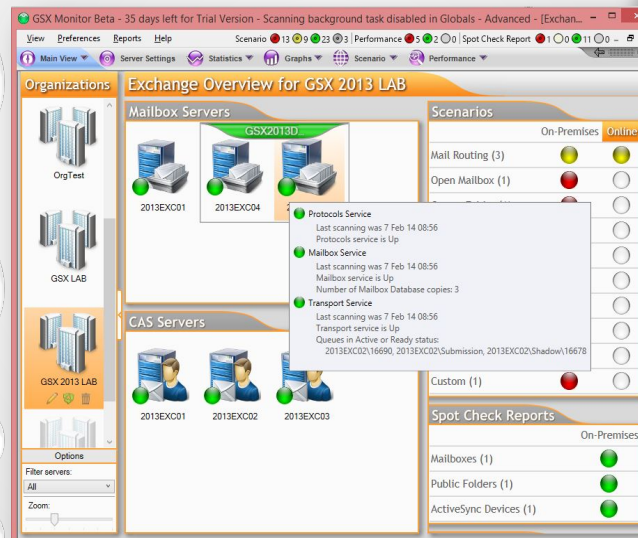
Checks and Report on Protocols connectivity (end user connections), Mailboxes Databases availability and size

Mailbox Transport Service Availability and Usage, be alerted on Suspended and retry queues, threshold on delivery and unreachable queue, mail flow statistics Reporting

Automate checks on DAG replication and high availability

Real Time monitoring of CAS proxy & Transport (SMTP) services!

Automatic monitoring of Windows services, Exchange Processes, Disk space, maintenance for any servers!



Mail Routing internal, external, hybrid tests and reports

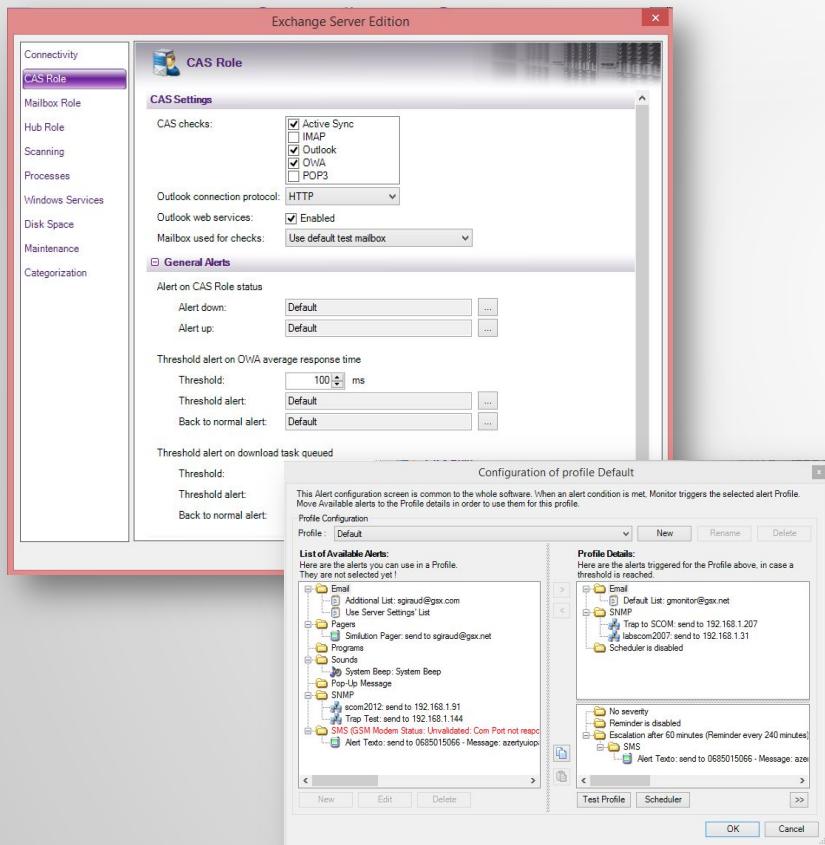
End User Scenario on premise or online at the same time

Automatic reports on Mailboxes usage (Location, logon, size, quota and much more!)

Automatic reports on Public Folder (owner size, usage)

Automatic reports on Active Sync Devices: how many devices, what type, where, etc.

Forget Your Script, Just Click!



- Totally Agentless
- Totally Out of the Box: Just click on what you want to check
- GSX automatically tests, collects the metrics and make it available for reporting
- Easy to install, maintain, use, one hour training is enough!
- Be alerted automatically per email, program, sound, pop-up, SCOM, etc.
- Setup reminder or automatic escalation profile in case of serious incident!
- No impact on server, GSX is one of your Users!

Collect Usage Statistics In a Click!



- Active Sync Reports
- Automatic, Simple, Easy
- Every Users, every Devices in one click!
- Who is using What??

Exchange 2010 ActiveSync Devices Results
34 ActiveSync Devices found for GSXMAIL01.ENT.GSX.COM - 18 Mar 14 18:54 - Processing time: 19 s 509 ms

User Name	Device Type	Device OS	Last Sync Attempt Time UTC	Last Success Sync UTC	First Sync Time UTC	Last Ping Heartbeat	Number Of Folders Synced	Device Mobile Operator	Device Active Sync Version	Device Friendly Name	Device OS Language	Device Phone Number	Device Policy Applied	Device Policy Application Status	Last Policy Update Time UTC	Is Remote Wipe Supported	Status
extest_fc0b7b3ec6914	TestActiveSy		18 Mar 14 16:54	18 Mar 14 16	11 Mar 13 16	60	1		12.0				Default	NotApplied	n/a	False	DeviceOk
extest_fc0b7b3ec6914	TestActiveSy		18 Mar 14 16:54	18 Mar 14 16	11 Mar 13 15	60	1		12.0				Default	NotApplied	n/a	False	DeviceOk
extest_fc0b7b3ec6914	TestActiveSy		18 Mar 14 16:52	18 Mar 14 16	17 Oct 12 10	60	1		12.0				Default	NotApplied	n/a	False	DeviceOk
Tim Book	iPhone	iOS 7.0.4	5 Dec 13 05:10:3	5 Dec 13 05	12 Dec 12 1	724	14		14.1	Black iPhone 4	en		Default	AppliedInFull	8 Nov 13 02:3	True	DeviceOk
Tim Book	SAMSUNGS	Android	17 Nov 13 00:06	17 Nov 13 0	29 Oct 13 20	0	6	Verizon Wire	14.1	iftvezw	English	*****3340	Default	AppliedInFull	29 Oct 13 20:5	True	DeviceOk
Tim Book	SAMSUNGS	Android	18 Mar 14 16:53	18 Mar 14 16	2 Dec 13 05	0	6	AT&T	14.1	ifteuc	English	*****6392	Default	AppliedInFull	2 Dec 13 05:5	True	DeviceOk
Tim Book	SAMSUNGS	Android	1 Dec 13 18:17:5	1 Dec 13 18	30 Nov 13 1	0	4	AT&T	14.1	ifteuc	English	*****6392	Default	AppliedInFull	30 Nov 13 19	True	DeviceOk
Tim Book	WindowsMail	WINDOW	11 Mar 14 19:48	11 Mar 14 19	10 Jun 13 23	3480	53		14.1	TIM-SURFACE	English		Default	AppliedInFull	10 Jun 13 23:2	True	DeviceOk
Tim Book	WindowsMail	WINDOW	21 Oct 13 21:22	21 Oct 13 21	11 Jun 13 17	180	52		14.1	TIM-SURFACE	English		Default	AppliedInFull	11 Jun 13 17:2	True	DeviceOk
Tim Book	WindowsMail	WINDOW	18 Mar 14 05:45	18 Mar 14 05	3 Nov 13 23	3480	52		14.1	TIM-SURFACE	English		Default	AppliedInFull	3 Nov 13 23:0	True	DeviceOk
Brian Apers	iPhone	iOS 7.0.4	18 Mar 14 14:08	18 Mar 14 14	28 Feb 13 12	1200	8		14.1	Noir iPhone 4	fr		Default	AppliedInFull	17 Feb 14 16	True	DeviceOk
User Monitor	TestActiveSy		20 Nov 13 10:50	20 Nov 13 1	25 Sep 13 07	60	1		12.0				Default	NotApplied	n/a	False	DeviceOk
User Monitor	TestActiveSy		20 Nov 13 10:47	20 Nov 13 1	12 Sep 13 05	60	1		12.0				Default	NotApplied	n/a	False	DeviceOk
User Monitor	TestActiveSy		20 Nov 13 10:49	20 Nov 13 1	12 Sep 13 10	60	1		12.0				Default	NotApplied	n/a	False	DeviceOk
Amaud Buonaccorsi	Android	Android 4	16 Mar 14 01:26	16 Mar 14 01	25 Aug 12 18	480	11		14.1				Default	AppliedInFull	16 Mar 13 08	True	DeviceOk
Amaud Buonaccorsi	Android	Android 4	18 Mar 14 14:59	18 Mar 14 14	20 Feb 14 09	1080	8	Orange F (2	14.1	Nexus 5			Default	AppliedInFull	20 Feb 14 09	True	DeviceOk
Amaud Buonaccorsi	htcace	Android 2	20 Feb 14 08:17	20 Feb 14 08	25 Jul 12 15	1200	8		12.1	htc_ace		*****able	Default	AppliedInFull	22 Aug 13 14	True	DeviceOk
Amaud Buonaccorsi	TestActiveSy		23 Aug 13 08:43	23 Aug 13 08	23 Aug 13 08	0	1		12.0				Default	NotApplied	n/a	False	DeviceOk
Amaud Buonaccorsi	WindowsMail	WINDOW	11 Jun 13 13:27	11 Jun 13 13	11 Jun 13 13	180	6		14.1	GUREN	English		Default	AppliedInFull	11 Jun 13 13:2	True	DeviceOk
Olivier Ravnaud	iPhone	iOS 7.0.4	18 Mar 14 15:10	18 Mar 14 15	26 Jul 12 11	900	11		14.1	Noir iPhone 4S	fr		Default	AppliedInFull	6 Jun 14 06:20	True	DeviceOk

Exchange 2010 Mailboxes Results

1006 Mailboxes found for GSXLAB Full report - 18 Mar 14 12:14 - Processing time: 28 s 988 ms

Name	Display Name	Alias	SMTP Address	Country	City	Company	Site	Server Name	DB Name	Type	Last login date UTC	Disconnect reason	Disconnect date UTC	Number of Items	Used size (in MB)	Issue Warning Quota		Prohibit Send Quota		Prohibit Send/Receive Quota	
																Quota (in MB)	%	Quota (in MB)	%	Quota (in MB)	% Use
gsx	gsx	gsx	gsx@gsx.la				gsx.lab/	LABMBX1	Mailbox D	UserMailbo	18 Mar 14 1	n/a	n/a	328434	1989.22	1945.00	1	2048.00	9	2355.00	84.47
gsxtest	gsxtest	gsxtest	gsxtest@g				gsx.lab/	LABMBX1	Mailbox D	UserMailbo	n/a	n/a	n/a	6	0.08	1945.00	0	2048.00	0	2355.00	0.00
Administrat	Administrato	Administr	Administrat				gsx.lab/	LABMBX1	Mailbox D	UserMailbo	19 Sep 13 0	n/a	n/a	27691	75.15	1945.00	3	2048.00	3	2355.00	3.19
DiscoveryS	Discovery S	Discover	DiscoverS				gsx.lab/	LABMBX1	Mailbox D	DiscoveryM	n/a	n/a	n/a	5	0.07	0.00	1	51200.00	0	51200.00	0.00
scom	scom	scom	scom@gsx				gsx.lab/	LABMBX1	Mailbox D	UserMailbo	n/a	n/a	n/a	5	0.07	1945.00	0	2048.00	0	2355.00	0.00
extest_727c	extest_727c	extest_7	extest_727				gsx.lab/	LABMBX1	Mailbox D	UserMailbo	18 Mar 14 1	n/a	n/a	7	0.09	1945.00	0	2048.00	0	2355.00	0.00
LABMBX2	LABMBX2	C77EF8F	C77EF8F5			TEST CO	gsx.lab/	LABMBX1	Mailbox D	UserMailbo	n/a	n/a	n/a	2	0.00	1945.00	0	2048.00	0	2355.00	0.00
LABMBX2	LABMBX2	C77EF8F	C77EF8F5			TEST CO	gsx.lab/	LABMBX1	Mailbox D	UserMailbo	n/a	n/a	n/a	2	0.00	1945.00	0	2048.00	0	2355.00	0.00
LABMBX2	LABMBX2	C77EF8F	C77EF8F5			TEST CO	gsx.lab/	LABMBX1	Mailbox D	UserMailbo	n/a	n/a	n/a	2	0.00	1945.00	0	2048.00	0	2355.00	0.00
LABMBX2	LABMBX2	C77EF8F	C77EF8F5			TEST CO	gsx.lab/	LABMBX1	Mailbox D	UserMailbo	n/a	n/a	n/a	2	0.00	1945.00	0	2048.00	0	2355.00	0.00
LABMBX2	LABMBX2	C77EF8F	C77EF8F5			TEST CO	gsx.lab/	LABMBX1	Mailbox D	UserMailbo	n/a	n/a	n/a	2	0.00	1945.00	0	2048.00	0	2355.00	0.00
LABMBX2	LABMBX2	C77EF8F	C77EF8F5			TEST CO	gsx.lab/	LABMBX1	Mailbox D	UserMailbo	n/a	n/a	n/a	2	0.00	1945.00	0	2048.00	0	2355.00	0.00
LABMBX2	LABMBX2	C77EF8F	C77EF8F5			TEST CO	gsx.lab/	LABMBX1	Mailbox D	UserMailbo	n/a	n/a	n/a	2	0.00	1945.00	0	2048.00	0	2355.00	0.00
LABMBX2	LABMBX2	C77EF8F	C77EF8F5			TEST CO	gsx.lab/	LABMBX1	Mailbox D	UserMailbo	n/a	n/a	n/a	2	0.00	1945.00	0	2048.00	0	2355.00	0.00
LABMBX2	LABMBX2	C77EF8F	C77EF8F5			TEST CO	gsx.lab/	LABMBX1	Mailbox D	UserMailbo	n/a	n/a	n/a	2	0.00	1945.00	0	2048.00	0	2355.00	0.00
LABMBX2	LABMBX2	C77EF8F	C77EF8F5			TEST CO	gsx.lab/	LABMBX1	Mailbox D	UserMailbo	n/a	n/a	n/a	2	0.00	1945.00	0	2048.00	0	2355.00	0.00
LABMBX2	LABMBX2	C77EF8F	C77EF8F5			TEST CO	gsx.lab/	LABMBX1	Mailbox D	UserMailbo	n/a	n/a	n/a	2	0.00	1945.00	0	2048.00	0	2355.00	0.00
LABMBX2	LABMBX2	C77EF8F	C77EF8F5			TEST CO	gsx.lab/	LABMBX1	Mailbox D	UserMailbo	n/a	n/a	n/a	2	0.00	1945.00	0	2048.00	0	2355.00	0.00
LABMBX2	LABMBX2	C77EF8F	C77EF8F5			TEST CO	gsx.lab/	LABMBX1	Mailbox D	UserMailbo	n/a	n/a	n/a	2	0.00	1945.00	0	2048.00	0	2355.00	0.00
LABMBX2	LABMBX2	C77EF8F	C77EF8F5			TEST CO	gsx.lab/	LABMBX1	Mailbox D	UserMailbo	n/a	n/a	n/a	2	0.00	1945.00	0	2048.00	0	2355.00	0.00
LABMBX2	LABMBX2	C77EF8F	C77EF8F5			TEST CO	gsx.lab/	LABMBX1	Mailbox D	UserMailbo	n/a	n/a	n/a	2	0.00	1945.00	0	2048.00	0	2355.00	0.00
LABMBX2	LABMBX2	C77EF8F	C77EF8F5			TEST CO	gsx.lab/	LABMBX1	Mailbox D	UserMailbo	n/a	n/a	n/a	2	0.00	1945.00	0	2048.00	0	2355.00	0.00
LABMBX2	LABMBX2	C77EF8F	C77EF8F5			TEST CO	gsx.lab/	LABMBX1	Mailbox D	UserMailbo	n/a	n/a	n/a	2	0.00	1945.00	0	2048.00	0	2355.00	0.00

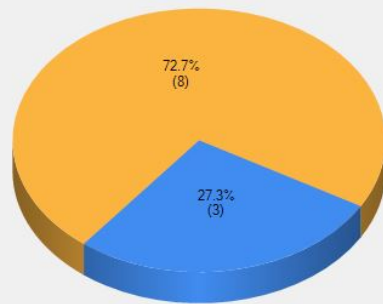
- Mailboxes Reports
- Automatic, Simple, Easy
- Every Users, every Mailboxes, every quota in one click!
- Who is using What??

Do You Need Infrastructure Statistics?



- Agentless
- Automatic
- Everything available for Trends and Capacity
- *In Just One Click!*

CAS Array Load Balancing (by number of connections)



2013EXC04.GSX2013.COM

Information

Operating system: Microsoft Windows Server 2012 Datacenter
 Exchange version: Version 15.0 (Build 775.38)

Services: Protocols
 Transport
 Mailbox

CPU Usage: 0.0 %
 RAM Available: 210 MB
 Performance counters: [\(Details\)](#)
 5 / 29 retrieved
 Scanned Processes: [\(Details\)](#)
 4 monitored processes

Critical Windows Services on:
 System [\(Details\)](#)
 Protocols
 Mailbox
 Transport

Protocols

No protocol were configured to be checked for this server.

Outlook Web Services [\(Details\)](#)

Availability Service
 Offline Address Book
 Outlook Anywhere
 Unified Messaging

Transport

SMTP Statistics	Daily	Weekly	Monthly
Inbound messages:	n/a	n/a	n/a
Outbound messages:	n/a	n/a	n/a
Inbound (MB):	0.0	0.0	0.0
Outbound (MB):	0.0	0.0	0.0

Queue Name	Status	Delivery Type	Message Count
2013EXC04\10336	Ready	SmartHostConnectorDelivery	0
2013EXC04\Poison	Ready	Undefined	9
2013EXC04\Submission	Ready	Undefined	0
2013EXC04\Shadow\10255	Ready	ShadowRedundancy	2

OWA Average Response Time (ms): 1
 OWA Current Unique users: 214748365
 FSDOAB Download Tasks Queued: n/a
 FSDOAB Download Tasks Completed: n/a
 RPC Client Access User Count: 0

Network Interface Name	Inbound traffic (KB/s)	Outbound traffic (KB/s)	Total traffic (KB/s)

Mailbox

DAG Replication: Health Status [\(Details\)](#)

Mailbox Database counts:
 Total copies: 3
 Mounted copies: 1
 Healthy copies: 2
 Copies on error: 0

Active connections: n/a
 Active user count: n/a
 Total Database Cache Size: 345.1 MB
 Session percent used: 3 %
 Client logons: n/a
 Messages queued for submission: 0

Mailbox Database List

Mailbox Database Name	Status	Content Index State	Size (MB)	Number of Mailboxes	Average Mailbox size (MB)	Last log inspected Date UTC	Last Full Backup Date UTC
Mailbox Database 1772514453	Healthy	Healthy	520	0	n/a	7 Feb 14 07:49:32	n/a
DB02	Mounted	Healthy	1032	11	43.53	n/a	n/a
DB01	Healthy	Healthy	10632	0	n/a	7 Feb 14 07:55:29	n/a

GSX for Exchange- Synthetic Transactions



End User Scenarios – Under the Hood!



End User Scenario are a Step by Step simulations that use Exchange On-Premises or Exchange Online exactly as a User

Mail Routing

- Exchange Online to Exchange Online
- Exchange on premise to Exchange Online
- Exchange Online Round trip to external service
- Exchange one way to External service
- External service one way to Exchange Online

Open Mailbox

- Connect to the Exchange organization
- Authenticate as a user
- Display the name of the Mailbox
- Count the number of items in that inbox
- Discover and count all folder into that inbox
- Check the number of unread item in this inbox

Create a meeting

- Create an appointment locally with all its characteristics
- Invite attendees
- Upload an attachment
- Save the meeting into the mailbox
- Send the meeting to all recipient



Monitoring

Creating Custom Linked Scenarios



Linking scenarios is the only way to measure complex interactions made by users-Exchange or Hybrid Environment

What is the Performance For a Complex End User Set of Actions?

What is the Performance of Exchange Online Complex Operations?

What is the Availability and Performance of Hybrid Environment?

● **Simulate actions of a 9am random user “Joe User”**

- “Joe User” first “Opens his mailbox”
- Then Joe “Resolves user” in order to “Create a meeting” with the user he just resolved
- Joe then “Searches” for mail in his mailbox
- Then he “Creates an email with an attachment” to notify the attendee of an upcoming meeting
- >>**What is the performance for a basic 9am set of actions? GSX constantly checks and reports on that!**

● **Manipulation of Exchange Objects**

- Open a mailbox
- Create task/folder/email with attachment
- Search this created item in the Mailbox
- Download the attachment of the searched Item
- >>**Is Exchange able to manipulate and use the items that are created?**

● **Interconnection of the Hybrid Infrastructure**

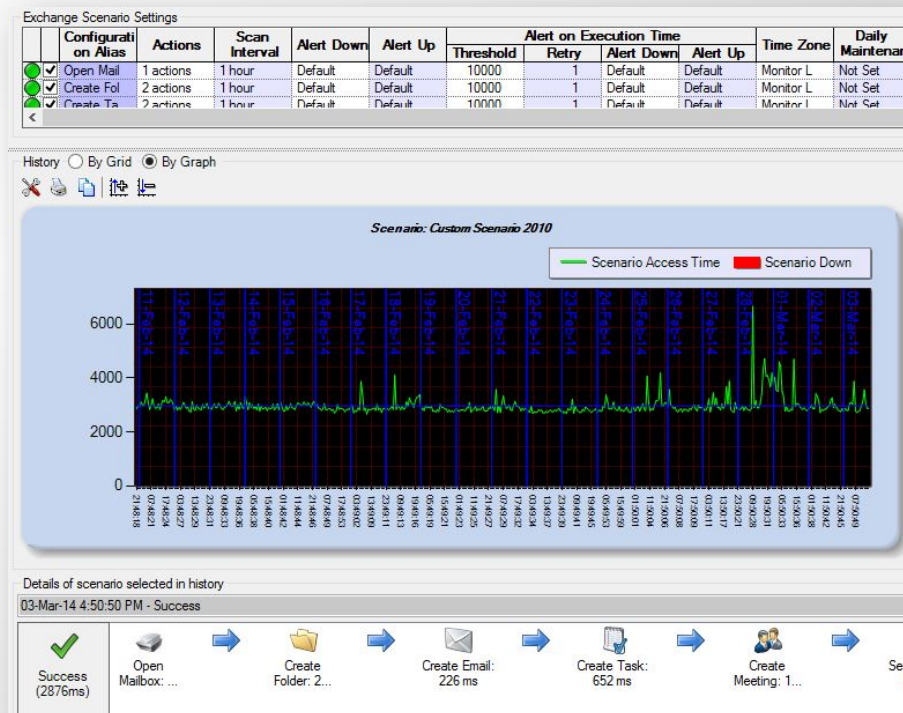
- Create a meeting Online
- Send the meeting to On-Premise users
- Symmetric resolving users between Online and the On-Premise Exchange
- Mail routing between Online to On-Premise & vice versa
- >>**Is Exchange Online able to connect and work with your On-Premise Environment?**

Detect Any End User Latency Issues!



Alerting

- Works on every version of Exchange: 2007, 2010, 2013 and Online
- Configure as many Scenarios as you want
- Simple or custom complex scenarios with real time latency monitoring
- Detect peak of charge or latency issues and be alerted instantly
- Set up multiple scanning engines and track each of your critical locations' end user performance
- Automatic, Simple & Easy to Use



Diagnostic Network/Internet Latency!

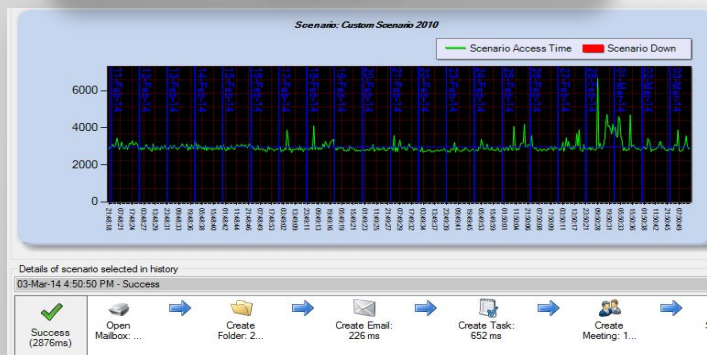


Compare Exchange Online or on-Premises Scenarios & Exchange Portal Latency

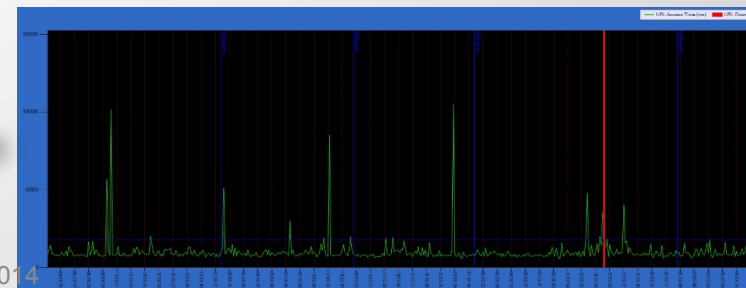
Test case examples

- Exchange Online Performance issue: Performance of Scenarios are dropping while the performance of the Exchange Online Portal remains stable
- Network issue: Increase of the latency of the Exchange Online Portal as well as Increase of Scenarios latency. To be crosschecked with an external website (like Bing) and if possible with an internal URL (intranet)
- Exchange Online Upload Bandwidth issue: Exchange Online Portal latency raises as well as Scenarios latency, in the same proportion and your second URL checks (like Bing) doesn't have any problems

Exchange Scenario Latency from Location A



Witness URL (Exchange Online Portal, Bing, etc.) Latency from Location A



End-User Scenarios Benefits



- **True End User Experience**

from multiple locations:
GSX is one of your users!

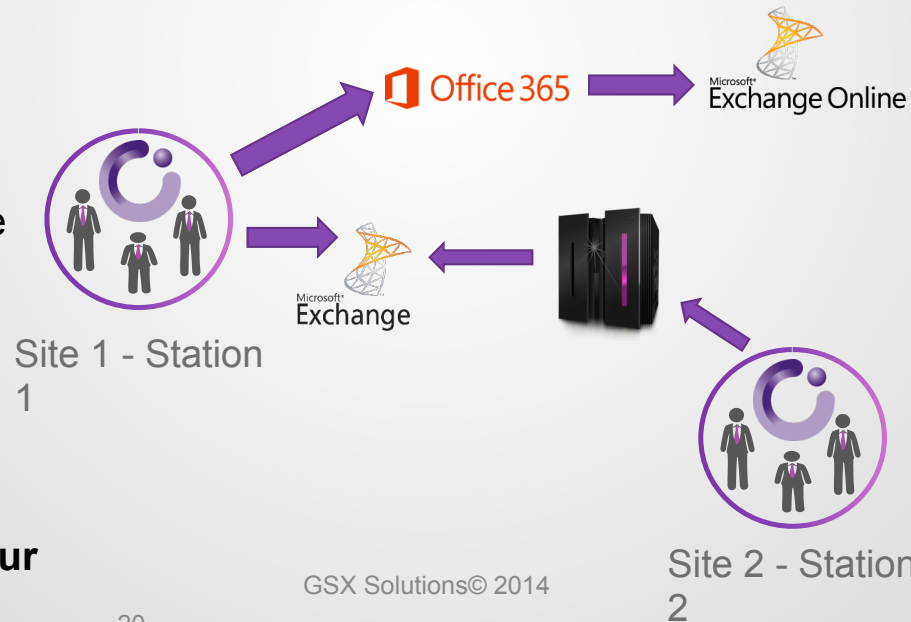
- **Detect Performance Issues**

from end-user locations before users are impacted: Reduce support calls and TCO

- **Mail Routing** tests to ensure email delivery from any location to:

- Any site
- External email services
- Roundtrip tests (echo)

- **Centralize GSX Alerts in your SCOM dashboard**



Scenarios		
	On-Premises	Online
Mail Routing (5)		
Open Mailbox (2)		
Create Folder (2)		
Create Task (2)		
Create Email (2)		
Create Meeting (3)		
Download Attachment (2)		
Search Item (2)		
Resolve User (2)		
Custom (3)		

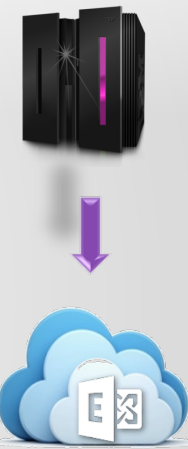
GSX Test Case Example



Health Checks & Migration Readiness Assessment

GSX is the only agentless tool, up and ready in minutes that **automatically:**

- **Discovers** the Exchange on premise environment
- **Collects** statistics about the usage of the mailboxes (size, quota, location, logon, etc.)
- **Measures** the performance of the service of the internal Exchange infrastructure
- **Assesses** the load of each server (CAS, DAG, Mailboxes, Hub, number of connections, inbound & outbound mail flow, etc.)
- **Evaluates** the level of services delivered to the end users (through the end user scenarios)
- **Alerts** in case of any performance issues
- **Reports** on the performance of multiple locations on the same web-based Dashboard



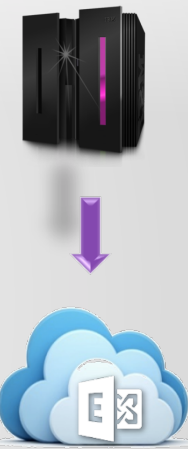
GSX Test Case Example



Check the result of the Migration to the Cloud before it really happens!

Pre Migration performance tests from any of your critical locations: Fix problems before they happen!

- Create 2 **monitored** test mailboxes, one in the current environment, one in the future one
- **Compare** with GSX the service delivered to these test mailboxes from your **critical locations**
- **Identify** any bottlenecks automatically
- **Checks** the ability of your current Infrastructure to work with the new one by running complex scenarios that involve both environments, for example:
 - Creation of a meeting with these two test mailboxes involved
 - Symmetric resolving users between the current and the new Exchange environment
 - Mail routing between both environments
- Constantly checks the performance of your **Executive VIP** Mailboxes!
- **Track** the performance of each location on every Exchange Environment!

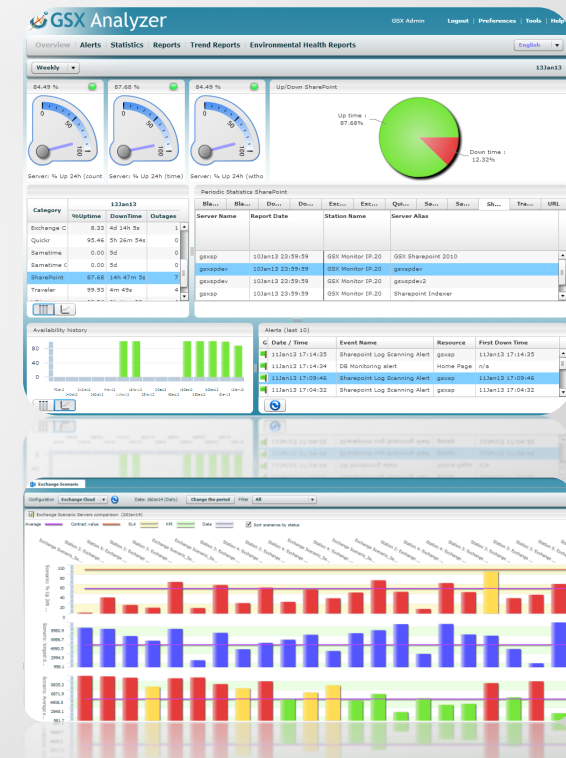


GSX Analyzer



One Reporting tool for all of your Exchange Locations

- Compare instantly the performance of your scenarios from your different locations
- Detect in seconds bottlenecks in your environment
- Access through profiles for instant Self-Service Reports
- Automatic PDF reports for management, service line & customers
- Trend and forecast System, Usage & Infrastructure Statistics



GSX for Exchange Benefits



- **Provide** real insight on the quality of service delivered to your end users to ensure **End User Satisfaction** and user adoption
- **Identify** the Exchange Infrastructure & network/internet **issue(s)** that impacted the service delivered to your users
- **Troubleshoot** easily any of the Exchange problems and be alerted in real time if there are any availability or performance issues
- **Secure** your migration to any environment by testing the results before you start from any critical location
- **Decrease** migration & support **Costs** by proactively pointing out any performance problems at any site and/or critical locations

GSX Monitor Integration with SCOM



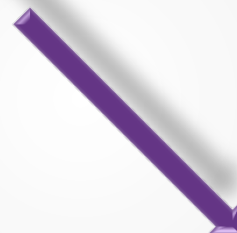
**GSX MONITOR
Management Pack for
SCOM**

**Instantly integrates GSX
Monitor's capabilities straight
into your SCOM Administration**

**Facilitate and unify your reporting by forwarding GSX
Monitor information to your global monitoring console**

**Provide End User Scenarios, Server, Usage Alerts
directly in the SCOM Console**

Easy reporting on any critical KPIs and SLAs



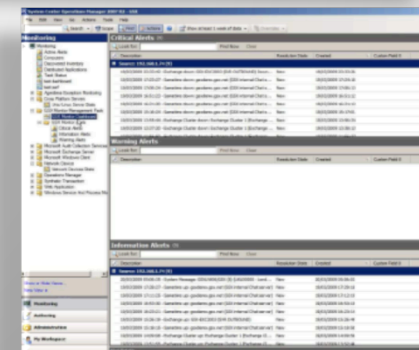
**Communicate automatically with
your centralized Incident
Management Platform and Team**

Profile Details:
Here are the alerts triggered for the Profile above, in case a threshold is reached.

- Email
 - Default List: gsxmonitor@gsx.net
 - Scheduler is disabled
- SNMP
 - SNMP Trap: send to 192.168.1.6

**Capture GSX Monitor's SNMP
traps and display them into
SCOM monitoring window
under:**

- Critical Alerts
- Warning Alerts
- Information Alerts



GSX Monitor & Analyzer - Trial



FREE TRIAL AVAILABLE

- 30-day
- Full features
- Unlimited users

30-Day
Free Trial
Start Now!

GSX Monitor & Analyzer



Contact us



GSX Solutions
sales@gsx.com

@GSX_Solutions GSX Solutions Friends of GSX www.gsx.com/blog

