



IceZone® X Owner's Manual

Automated Ice Machine Sanitation System

IceZone® X inhibits the growth of mold, slime, and other contamination in ice machines, extending the life of the ice maker and lowering maintenance costs. IceZone® X delivers cleaner and healthier ice.



IMPORTANT!

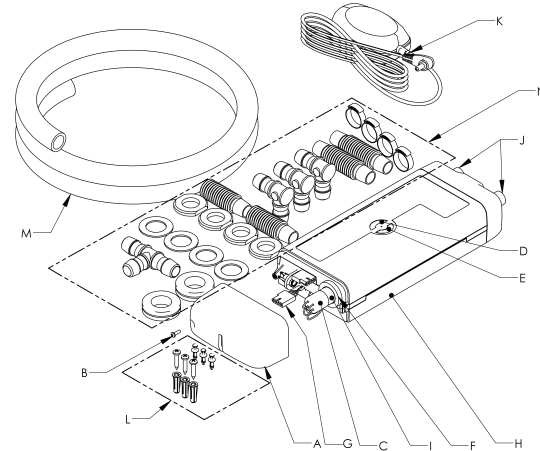
- Only qualified technicians should install this product
- Install in accordance with relevant building codes
- Read instructions carefully including safety warnings

WARNING

PROTECT EYES FROM UV LIGHT TURN OFF UNIT OR DISCONNECT BEFORE SERVICING



IceZone® X COMPONENTS



- | | |
|--------------------------------|------------------------------------|
| A. Service Cover | H. Main Body |
| B. Service Cover Screw | I. UV-Lamp |
| C. Lamp Connector | J. Plasma Ports |
| D. Status Indicator | K. 12V DC 25W Power Adapter |
| E. Lamp Life Reset Port | L. Mounting Screws / Rivets |
| F. Lamp Seal | M. PlasmaProtect® Tubing |
| G. Power Connection | N. PlasmaProtect® Fittings |

SPECIFICATIONS

Dimensions: 11.93 in (L) x 4.25 in (W) x 2.05 in (H)

Electrical: Input: 100-240 V, 50/60 Hz
Output: 12 V, 0.8 A (transformer rated to 2.0 A)
Includes 8 ft cord and plug (2.5 m)

Ambient Air: Operating temperature range: 40° F to 104° F (5° C to 40° C)
0-90% non-condensing humidity

Water Supply: No requirements (IceZone® is not integrated into the water system)

Certifications: HACCP, NSF (standard 169), UL (standards 507, 935), CE, RoHS WEEE, FCC part 15



RoHS



US EPA Est No. 08795-FL-001

IceZone® X INSTALLATION INSTRUCTIONS

How IceZone® X Works

IceZone® X creates an environment that inhibits the growth of contamination by disinfecting the air and surfaces in the treated area.

Tools Needed For Installation

- 8 Foot Ladder
- Knife or Hose Cutter
- Power Drill
- Phillips Head Screwdriver

Prior To Installation

- For best results, clean and sanitize the ice machine and all attached ice bins and dispensers thoroughly before installing IceZone® X
- Only a maintenance mechanic or appropriately qualified person may install the appliance
- Turn power off to the ice machine
- Do not connect IceZone® X to water supply under any circumstances
- Verify the availability of a wall plug within 8 ft. of the IceZone® X installation

There are many different types of ice machines so there is no single “right” IceZone® X installation. However to achieve maximum effectiveness, the correct placement of the IceZone® X is very important.

Below are a couple typical examples of IceZone® X installations.

Typical IceZone® X Installations



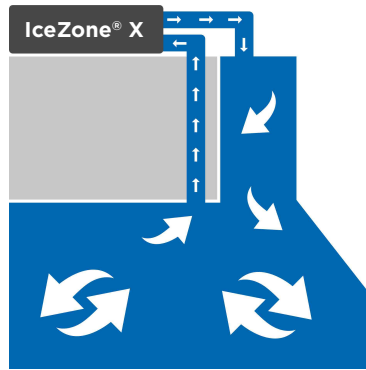
Ice Machine Cuber Mounted on Beverage Dispenser



Ice and Water Dispenser



Ice Machine Cuber Mounted on Ice Bin



BioZone Scientific provides ice machine specific instructions for many styles of ice machines. Please download these instructions from the IceZone® X installation page on BioZone Scientific's website: <http://biozonescientific.com/icezone-installation-maintenance>

The following steps outline general guidelines for IceZone® X installation on cuber style ice machines.

STEP 1: IDENTIFY INSTALLATION LOCATION

To determine the best location for your ice machine, start by looking for areas of mold growth and choose a position for IceZone® X that will provide maximum treatment to that area.

It is recommended that the IceZone® X be mounted on top of the ice machine. To avoid condensation, do not mount IceZone® X with the supply and return ports pointing up.

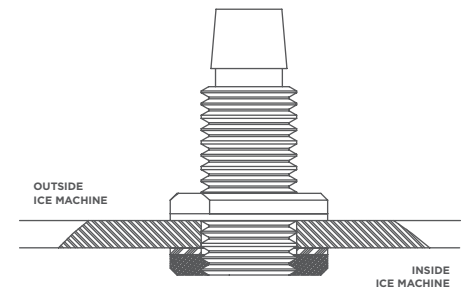


STEP 2: DRILL SUPPLY & RETURN PORTS

Mark the location for the supply and return ports on the ice machine according to these steps:

- Supply and return fittings and tubing should be installed above the ice levels
- Supply should be positioned to target areas that are vulnerable to slime buildup with photoplasma
- Supply and distribution lines should be positioned as far apart as possible to maximize distribution of photoplasma
- Photoplasma is heavier than air, so install the supply line relatively high, and the return line relatively low

Remove top panel or cover to be drilled. Drill the 1" (25mm) holes for the bulkhead fittings. Clean the drilling debris from the holes in the ice machine. Install the fittings for the supply and return ports.



EXPANDED VIEW OF SUPPLY FITTING

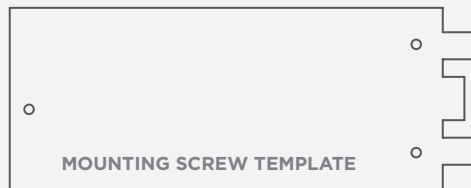
STEP 3: MOUNT IceZone® X

Mark the location on the ice machine for the 5/32" (4mm) holes for the IceZone® X plastic mounting rivets. These holes should be located above/near the mechanical area of the ice machine and not the ice making area (food zone).

Drill the three (3) 5/32" (4mm) holes to mount the IceZone® X. Attach IceZone® X to the ice machine with mounting screws.

A scaled diagram of the IceZone® X mounting screw template is provided below.

To download a printable 8.5" x 11" full-scale version of the template, please visit the IceZone® X installation page on BioZone Scientific's website: <http://biozonescientific.com/icezone-installation-maintenance>.



STEP 4: CONNECT FITTINGS & TUBING

Arrange the tubing and fittings on the ice machine to connect to the IceZone® X output and return ports. Attach the internal return tube and ensure it does not come in contact with the ice curtain through its range of motion.

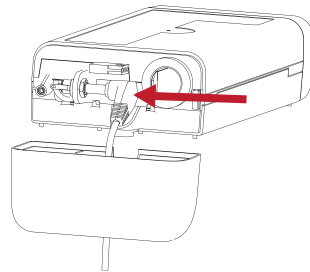
Note: Hot water can be used to make the food-grade tubing more pliable to bend or receive fittings, as needed.

STEP 5: CONNECT POWER & PLUG IN IceZone® X

Insert the power-supply cord through the service cover slot and into the DC power socket.

Place the service cover over the end of the IceZone® X and install the cover screw.

Plug the IceZone® X power adapter in to the wall and observe that status light on top of the IceZone® X. The status light should show a blue circle indicating normal operation.



The IceZone® X is now operating and keeping your ice machine clean!

LAMP REPLACEMENT

UV Replacement Lamp Part Numbers

- IceZone® X 10: 10-08025
- IceZone® X 20: 10-08050
- IceZone® X 30: 10-08100

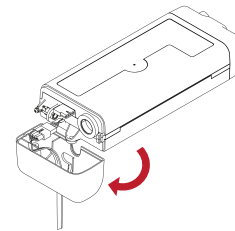
UV Replacement Lamp Instructions

The UV lamp in IceZone® X needs to be replaced every year.

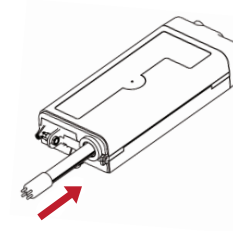
UV lamps continue to emit visible light but lose effectiveness over time.

Note: Avoid touching the lamp surface with fingers.

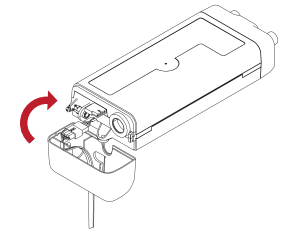
1. Remove Service Cover



2. Remove/Replace Lamp



3. Replace Service Cover



Note: Use of non-BioZone Scientific-supplied replacement UV lamps voids the warranty.

Caution: UV lamps contain small amounts of mercury. Dispose of lamps in accordance with local environmental regulations. For more information visit <http://lamprecycle.org>.



Important!

Reset the lamp life counter by holding down the reset tool in the reset hole at the center of the LED Indicator Status ring. If the reset tool is not available, a paperclip can be substituted.



LAMP RESET TOOL

IceZone® X LED INDICATOR STATUS



Steady Blue
Operation Normal



Steady Red
Replace Lamp



Flashing Red
Service Required



Flashing Blue/Red
Lamp ID Incorrect

TROUBLESHOOTING

| TROUBLE | CHECK |
|---|--|
| Flashing Red Light (Fan works) | Open the IceZone® X service cover and check that the lamp connectors are properly installed. Replace lamp. |
| Steady Red Light (Fan works) | Lamp time expired. Replace lamp to maintain effective ice machine cleaning. Reset lamp timer after installing new lamp. |
| Flashing Blue & Red Light (Fan works) | Replace lamp. Confirm lamp part number. Non-BioZone Scientific lamp may be in use; replace with BioZone Scientific lamp. |
| No Light (Fan does not work) | Make sure (1) power supply is plugged in, (2) power outlet is working properly, and (3) power cord is undamaged. |
| Weak Airflow | Clean lamp. Check for blocked hose or fittings. |

OZONE HAZARD

IceZone® X generates ozone from oxygen found in the ambient air. Occupational Safety and Health Administration (OSHA) limits for ozone are as follows:

- Long term exposure limit: 0.10 ppm for 8 hours
- Mid term exposure limit: 0.20 ppm for 2 hours
- Short term exposure limit: 0.30 ppm for 15 minutes

IceZone® X is designed to produce ozone below the above listed limits when installed, used and maintained as instructed. Ozone is approved by the US FDA for food service use and is categorized as “generally regarded as safe” (GRAS).

WARRANTY

| ITEM | COVERAGE | PERIOD | ACTION |
|--------------|----------|-----------------------|--|
| IceZone® X | Parts | 3 Years | Repair or replacement at BioZone Scientific's discretion |
| UV Lamp | Parts | 1 Year (Pro-rated) | Balance of lamp warranty coverage period credited towards purchase of replacement lamp |
| Installation | None | None | None |
| Shipping | None | None | None |

See warranty card in box for more details about applicable warranty terms and conditions.

SIZING

Follow these guidelines for proper IceZone® X model selection:

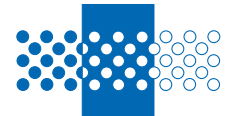
| ICE MACHINE CLEANING INTERVAL* | ICE & WATER DISPENSER DAILY ICE PRODUCTION (IN LBS) | | | |
|--------------------------------|---|----------------|--------|--------|
| | < 400 | >400 to < 1000 | ≥ 1000 | |
| 180 Days | IZ-X10 | IZ-X20 | IZ-X30 | |
| 120 Days | IZ-X10 | IZ-X20 | IZ-X30 | |
| 90 Days | IZ-X10 | IZ-X20 | IZ-X30 | |
| 60 Days | IZ-X10 | IZ-X20 | IZ-X30 | IZ-X30 |
| ≤ 30 Days | IZ-X10 | IZ-X20 | IZ-X30 | IZ-X30 |

*Ice Machine Cleaning Interval: The time from the last ice machine cleaning and sanitation to the appearance of visible organic growth. Note that this is not the same as the frequency that the ice machine is being cleaned, but rather the frequency that the ice machine should be cleaned.

BioZone Scientific International

For service or warranty questions contact BioZone Scientific Customer Service department:

Phone: +1 (407) 876-2000
Email: customerservice@biozonescientific.com
Address: 7616 Southland Blvd.
 Suite 114
 Orlando, FL 32809 USA



BIOZONE®
SCIENTIFIC INTERNATIONAL