

80' X 136' X 16'-6" MACHINE SHED

Building Special



*Some restrictions apply. Photo shown with additional optional features.

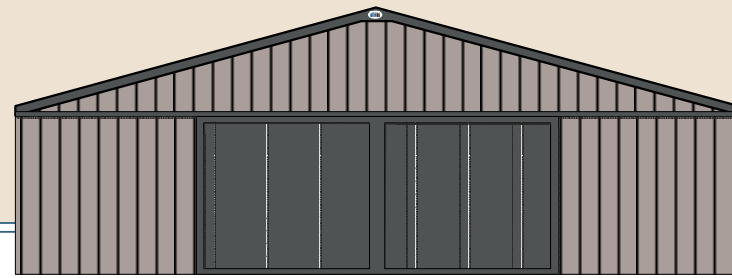
\$84,992*

Includes Sales Tax, Builders Risk
Insurance, & Trash Removal

SPECIAL PRICE EXPIRES 2/19/2015

 **FBI Buildings**
Maximize the Value of Your Building Investment

80' x 136' x 16'-6" Floor Plan



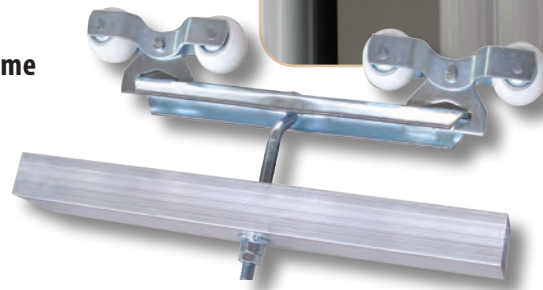
80' End Elevation

Structural Integrity/Longevity

- **Trusses Built with Machine Stressed Rated Lumber (MSR)**
 - Press plate truss construction
 - MSR = machine stress rated vs visual rated ensures consistency in the best strength quality
- **Steel Siding & Roofing with Premium Steel Substrates**
 - For long lasting corrosion resistance
 - Full hard 80,000 psi steel panels to maximize strength and impact resistance
- **Kynar 500 Paint**
 - Virtually fade proof
- **Stainless Steel Cap Screws**
 - Specially designed umbrella cap protects the washer to minimize leaks

Access Doors

- **40' x 16'-6" (endwall) & 24' x 16'-6" (sidewall) EasyMotion Split-Siding Door**
 - With StepSaver Latch
 - All aircraft-grade aluminum alloy girts and frame for outstanding strength-to-weight ratio
- **3' x 6'-8" Aluminum Frame Steel Entry Door**
 - Stainless steel ball bearing hinges



Ventilation

- **Vented-Ridge Cap**
 - Continuous vented ridge offers improved ventilation

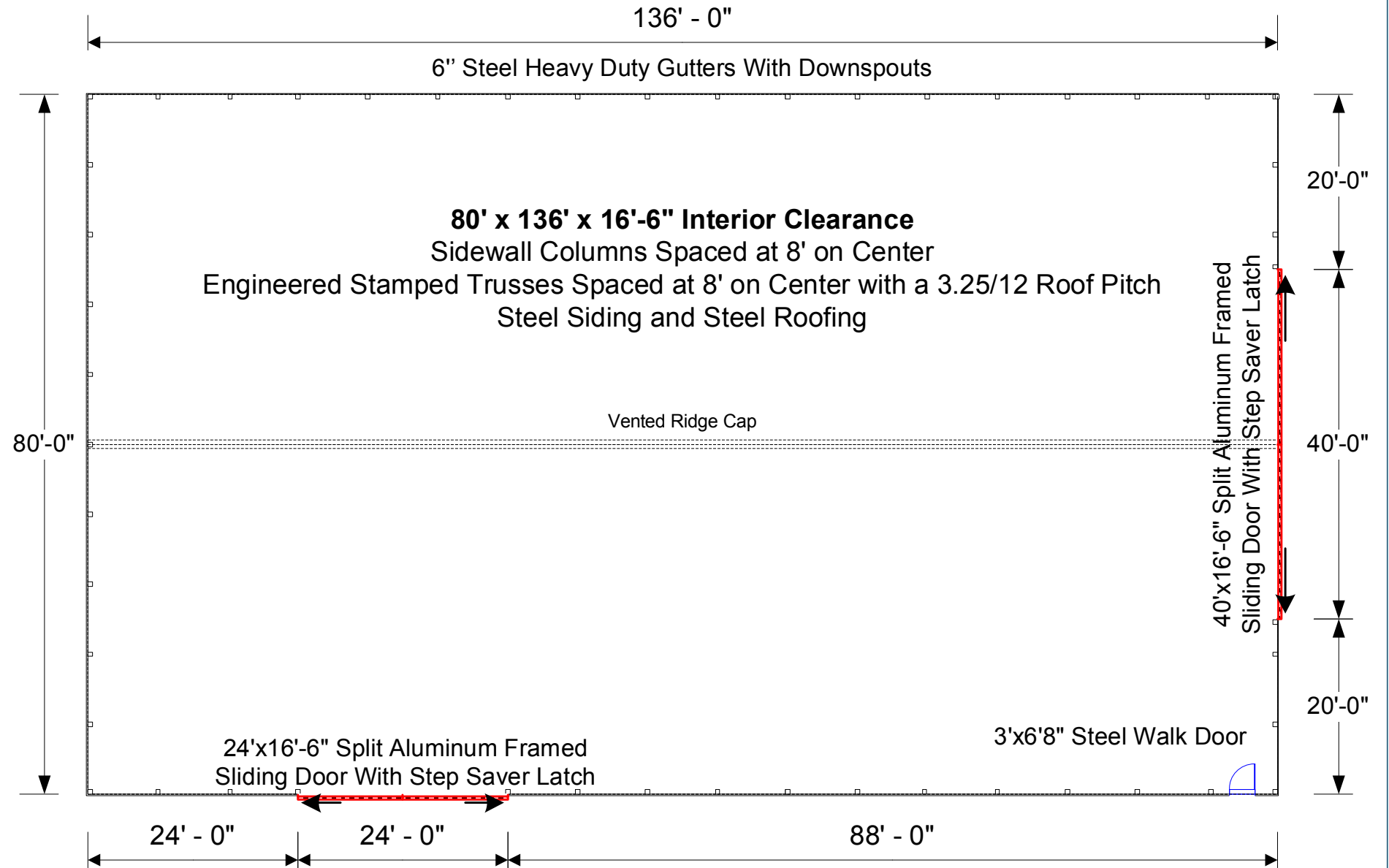
Drainage

- **Gutters & Downspouts**
 - 6" heavy-duty steel gutters; color matched to your building

Additional Options Available

- **Ability to Add Additional Features such as:**
 - Perma-Columns, Overhangs, Windows, Additional Doors & Much more!

*Buildings must be purchased by February 19, 2015. Prices include delivery, materials, FBI Buildings employed crew labor, sales tax, builders risk insurance, and trash removal. Prices are estimated with delivery within 70 miles of Remington, Indiana. Prices may vary from price shown above based upon local code requirements, travel/delivery distance, purchaser's requested options, and/or other particulars. Prices contingent upon the following being done by March 31, 2015 at the latest: site work completed with approved site conditions optimizing crew efficiency, material staging area, equipment usage, and proper construction zone drainage, as well as all necessary permits secured and customer approval to start construction. Building construction to start between January 31, 2015 and March 31, 2015 with substantial completion by April 30, 2015.



136' Side Elevation

**Note: Building specials cannot be combined with any other offer or rebates.

Maximize Your Building Value

CREW POWER: Company Employed

- Experience, quality workmanship, and a safe work environment
- The right equipment, tools, and work ethic
- Respect for you and your property
- Protection for your investment during construction



SLIDING DOOR: EasyMotion

Strength - High strength aluminum alloy with EasyMotion Interlocking Frame gives you a fully engineered lightweight door system to protect your investment.



Ease of Use - Posi-Guide Track offers weatherproofing for year-round, hassle-free operation (eliminating the need to clean debris from the lower track).

EASY ACCESS: StepSaver Door Latch

Save Time - The easy access StepSaver door latch allows you to open and close, lock and unlock your sliding door from outside the building without running around disengaging cam latches and snigger chains.



FBi Buildings

3823 W 1800 S
Remington, IN 47977
800-552-2981
www.fbibuildings.com