

REPLICATOR

FOR MICROSOFT DYNAMICS NAV[®]

COMMAND CENTER GUIDE 4.30

Neither the documentation nor the software may be copied, photocopied, reproduced, translated or reduced to any electronic medium or machine-readable form; in whole or in part; without the prior written consent of Data Backbone Software A/S, except in the manner described in the documentation.

Usage of information in this document is the users' own responsibility; Data Backbone Software A/S can not be held responsible for any damage that may arise from using this document or the software described herein, even if Data Backbone Software A/S has been notified of such.

Navision[®], Navision[®] Financials, Navision[®] Attain, MBS-Navision[®], Microsoft Dynamics NAV[®], Windows 7 and Windows 2000 are registered trademarks of Microsoft Corporation.

All other registered trademarks are the property of their respective holders.

The MetaPlus font was used.

© Copyright 1996-2009 Data Backbone Software A/S, Sdr. Tingvej 10,

DK-6630 Rødding, Denmark. All Rights Reserved.

Printed in Denmark.

PREFACE

If you want to use the Replicator Command Center in order to run Replicator Specifications, start Replicator in Scheduler mode or start Replicator as a Server, you will find this guide a helpful tool.

It is assumed that you are familiar with the basics of Replicator including terms such as “`replicat.ini`”, “Replicator INI Editor”, “Specifications”, “Scheduler” and “Replicator Server”. If not, we recommend that you read the Replicator Administrator’s Guide 4.30 first.

This guide is made up of four chapters and one appendix. In the first chapter you learn what the Replicator Command Center is and what happens when entering it for the first time. In chapter two you learn how to specify the tab “Configuration”. In chapter three you learn how to run Specifications. In chapter four you learn how to start/activate a Replicator Server and Replicator Scheduler. Appendix A offers troubleshooting solutions.

Each chapter or appendix starts with a brief description of the contents in it. This will help you decide if this is where the information you need is located.

Preface

TABLE OF CONTENTS

CHAPTER 1 INTRODUCING REPLICATOR COMMAND CENTER 1

What is the Replicator Command Center? 2

Entering the Replicator Command Center for the first time 3

CHAPTER 2 CONFIGURATION 5

The tab Configuration 6

Navision 3.56 9

MS Dynamics NAV 11

CHAPTER 3 SPECIFICATIONS 13

Specifications 14

CHAPTER 4 OPERATION MODES 21

Operation mode 22

Server 23

Scheduler 24

APPENDIX A TROUBLESHOOTING 25

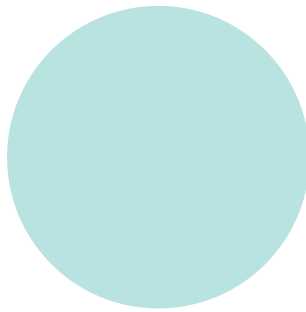
Troubleshooting 26

.

Chapter 1

Introducing Replicator Command Center

This chapter is an introduction to the Replicator Command Center – describing the possibilities it offers.



1.1 WHAT IS THE REPLICATOR COMMAND CENTER?

The Replicator Command Center is a graphical application you can use for the following tasks:

- Run Specifications.
- Run Replicator as a server (i.e. starting/activating a Replicator Server).
- Run the Replicator Scheduler (i.e. starting/activating Scheduler jobs of the type Replicator).

Before you can execute any of these tasks from the Replicator Command Center, you have to specify which Replicator Configuration you want to work with (i.e. which database contains the required Replicator setup information).

Notice that...

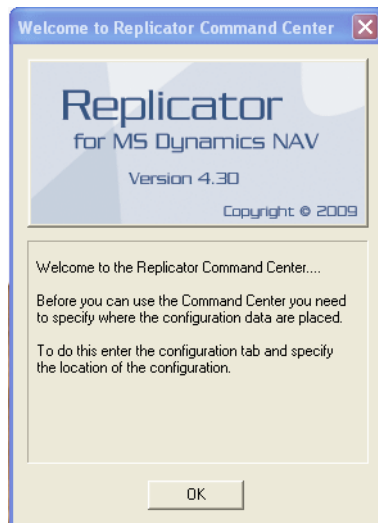
.....

First time users, please read section 1.2 before using the Replicator Command Center.

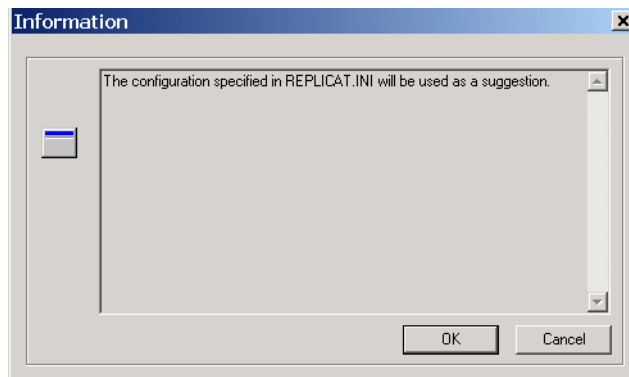
.....

1.2 ENTERING THE REPLICATOR COMMAND CENTER FOR THE FIRST TIME

When you enter the Replicator Command Center for the first time, you have to specify which Configuration you want to work with (see picture below).



As default, the Configuration information specified within the Replicator INI Editor (`replicat.ini`) will be suggested (see picture below).



By pressing the “OK”, you will see that the fields of the Configuration tab now have been specified in accordance with the Replicator INI Editor (`replicat.ini`). To accept this, you simply press “Apply” and then “Load”.

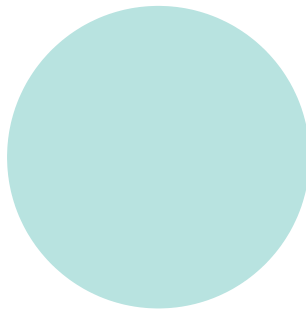
If you want to use another Configuration than the one suggested or if you did not specify the tab “Configuration” within the Replicator INI Editor (`replicat.ini`), you can press the button “Cancel”. Then you set up which Configuration you want to apply and load instead. For further information about how to specify the Configuration tab, please refer to the next chapter, “Configuration”.

The tab “Configuration” within the Replicator INI Editor (`replicat.ini`) is covered in the Replicator for Microsoft Dynamics NAV Administrator’s Guide 4.30, section 2.7.

Chapter 2

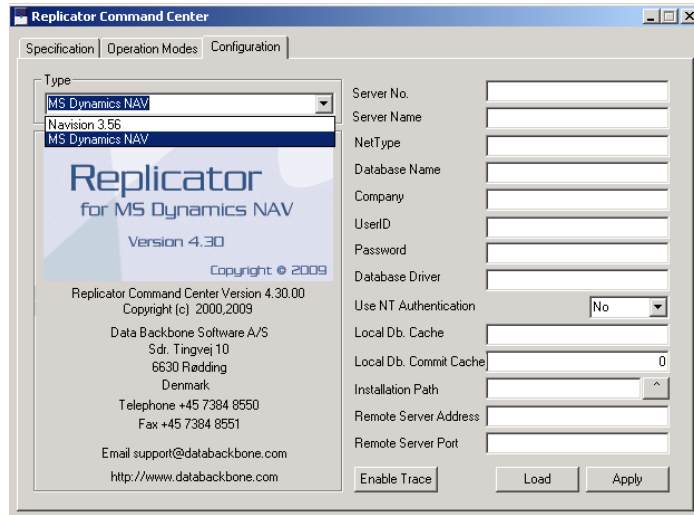
Configuration

This chapter describes how to apply and load a Configuration.



2.1 THE TAB CONFIGURATION

By choosing the tab “Configuration” you enter the following window:



Here you specify where the requested Configuration resides (the location of the Specifications etc. that you want to work with).

Currently, you can load a Configuration from the following databases:

- Navision 3.56.
Described in section 2.2
- MS Dynamics NAV.
Described in section 2.3

When you have “applied” a Configuration, you have to press the button “Load”. All the Specifications etc. will now be available within the Replicator Command Center.

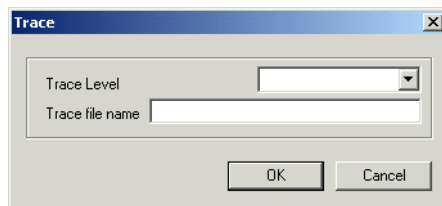
Whenever you edit a “parameter”, you have to press the “Apply” button in order to save the changes.

The next time you open the Command Center, the Configuration you applied earlier will automatically be loaded.

Enable Trace

If you want to create a Trace file which contains information about what happens while Replicator is running, you can press the button “Enable Trace”.

The following window appears:



Here you choose how detailed the information should be (Trace Level) and specify the name (<name>.txt) of the Trace file (Trace file name).

Trace levels:

- Default:
Shows common program information and error messages. The information is of less technical character.
- Program Flow:
Shows the same as Default plus function headers.
- Level 2:
Shows the same as Program Flow plus the position within a function.
- Level 3:
Shows the same as Level 2 plus more detailed information about the position within a function as well as technical information about how your program manages the data process.
- Wild:
Shows all the information available.

The file will be placed in the main directory of Replicator (for example, “C:\Program Files\Data Backbone Software\REPNT”).

Chapter 2. Configuration

If you want to place the Trace file somewhere else, you can include a path in the Trace file name (for example, “c:\Replicat\trace.txt”).

When you have enabled the Trace facility, the button “Enable Trace” changes to “Disable Trace” and by pressing “Disable Trace”, information will no longer be saved in the Trace file.

For more information about the Trace facility, please refer to the Replicator for Microsoft Dynamics NAV Administrator’s Guide 4.30, section A.1.

2.2 NAVISION 3.56

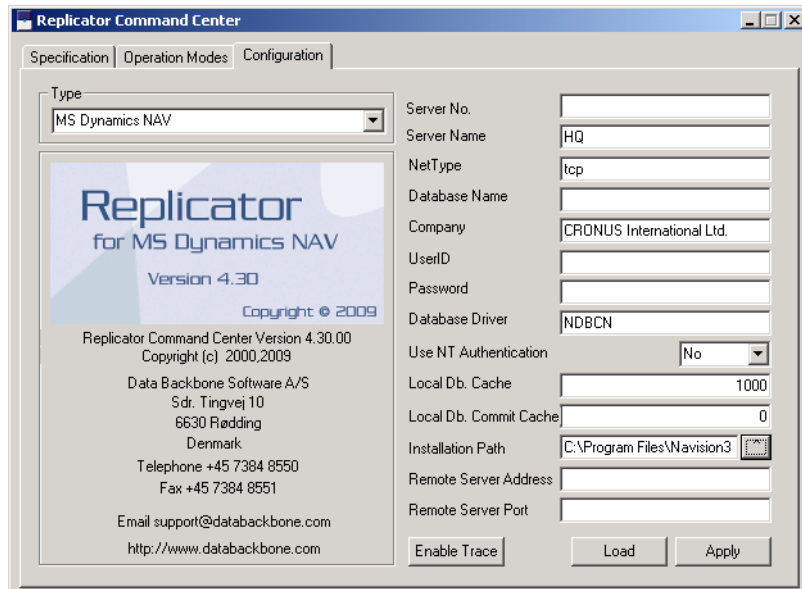
If the Configuration you want to use resides in a Navision 3.56 database, you choose “Navision 3.56” in “Type” and specify the following parameters:

Parameter	Description
Server No.	If the database is hosted by a Navision 3.56 server, the server number is specified here.
NetType	If the database is hosted by a server, you specify what type of network protocol that should be used (“netb” if using NetBios or “tcp” if using TCP/IP).
Database Name	If the database is a local database you leave the parameters “Server No.” and “NetType” blank and specify the exact location of the database (path and name).
Company	Specify the name of the Account that keeps the Configuration data (the Specifications etc.). PLEASE NOTE: Account name is case sensitive!

Chapter 2. Configuration

Parameter	Description
UserID	If the database is protected by UserID, you specify a UserID here.
Password	Apply the Password for the UserID here, if any.
Local Db. Cache	If the database is a local database you can specify a size for cache settings.
Local Db. Commit Cache	If the database is a local database you can specify a size for commit cache settings.
Installation Path	Specify the path to the main directory of your Navision 3.56 Client.

2.3 MS DYNAMICS NAV



If the Configuration you want to use resides in a Navision Financials, Navision Attain, MBS Navision or MS Dynamics NAV database, you choose “MS Dynamics NAV” in “Type” and specify the following parameters:

Parameter	Description
Server Name	If the database is running on an MS Dynamics NAV server or on an MS-SQL Server, you specify the name of the server here.
Net Type	If the database is hosted by an MS Dynamics NAV server, you specify what type of network protocol that should be used (“netb” or “tcp”). If the database is hosted by an MS-SQL Server, this parameter is specified differently. Please refer to the MS Dynamics NAV for MS-SQL Server on-line help.

Parameter	Description
Database Name	If the database is hosted by an MS-SQL Server, you specify the name of the database here. If the database is a local database you leave the parameters “Server Name” and “NetType” blank and specify the exact location of the database instead (path and name).
Company	Specify the name of the Company containing the Configuration data (the Specifications etc. you want to work with). PLEASE NOTE: Company name is case sensitive.
UserID	If access to the database requires a UserID, you specify the UserID here.
Password	If you enter a UserID the corresponding Password is applied here.
Local Db. Cache	If the database is a local database you can specify a size for cache settings.
Local Db. Commit Cache	If the database is a local database you can specify a size for commit cache settings.
Installation Path	Specify the path to the main directory of your MS Dynamics NAV Client.

Notice that...

.....

If the Configuration is accessed through a Replicator Server, you have to specify the field “Installation Path” with the path to the MS Dynamics NAV client installed on the computer where the Replicator Server runs.

.....

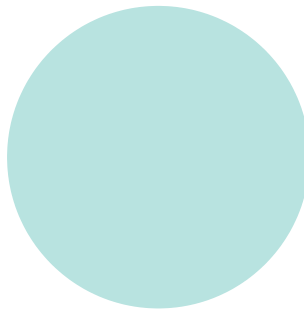
Chapter 3

Specifications

This chapter describes the tab “Specification”.

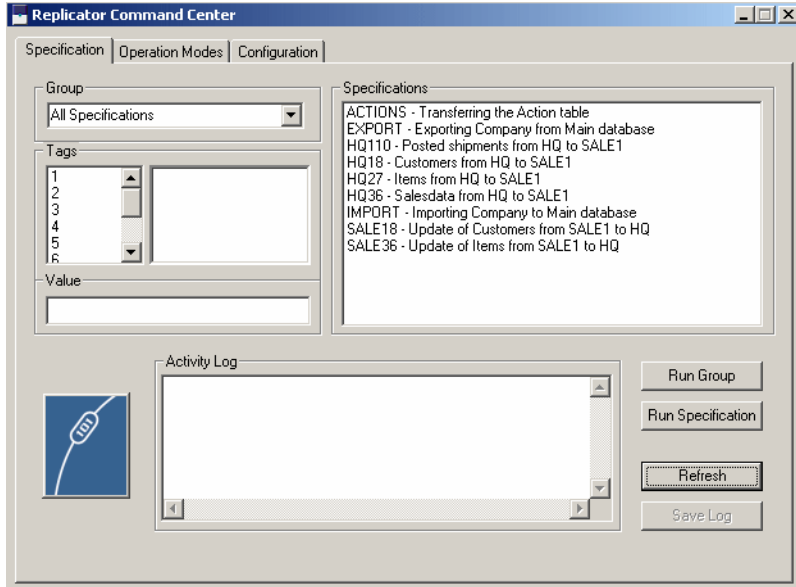
The following topics will be covered:

- The Activity Log window.
- Running one or several selected Specifications.
- Running a group of Specifications.
- Running Specifications that include Tags.



3.1 SPECIFICATIONS

By choosing the tab “Specification” you enter the following window:



When the Configuration has been loaded, the Specifications this Configuration contains will be listed in the “Specifications” window. They will be displayed with their “No.” and if a description has been specified, this will be shown too.

You can run one specific Specification, several Specifications or a group of Specifications.

If a Specification includes Tags you can define what they should mean before running the Specification.

In addition, information about what happens while Specifications are running is included in the “Activity Log” window.

Notice that...

.....

If you have created a new Specification or Group within the Replicator Setup Application database and a Command Center using this Configuration is open, you must press the button “Refresh” in order to get the new Specification or Group to appear in the Command Center.

.....

Activity Log

Information about what Replicator is doing while running Specifications is written to the Activity Log window.

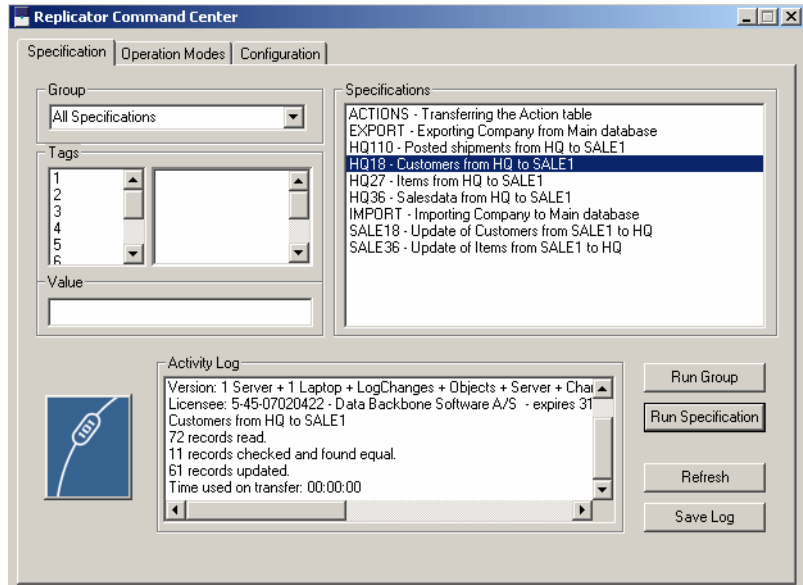
This way you will be able to follow if the Specification is executed correctly.

If you want to save the information shown in the Activity Log window to a file, you can press the “Save Log” button. A window appears where you can save the file as a Replicator Log File (*.txt).

Running one or several selected Specifications

If you want to run a specific Specification, you simply mark the Specification and press the button “Run Specification”.

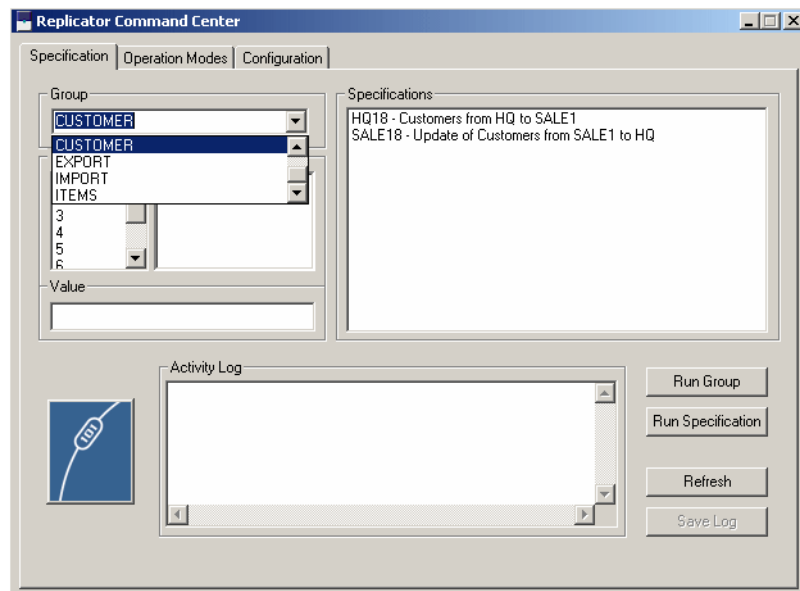
Chapter 3. Specifications



As you can see, information about what takes place during replication is written to the “Activity Log” window.

You can also mark several Specifications at the same time and have them run by pressing the “Run Specification” button.

Running a group of Specifications



If Specifications have been arranged in groups by using the Groups facility, these will be shown in the “Group” drop-down list.

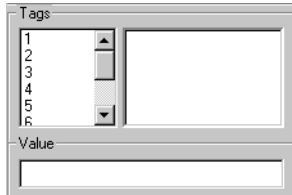
When choosing a Group in the drop-down list, the Specifications in that Group are shown in the “Specifications” window. To run these Specifications, press the button “Run Group”.

Another option available in the “Group” drop-down list is “All Specifications”. By choosing this, all Specifications available will be listed in the “Specifications” window.

For further information about Groups, please refer to the Replicator for Microsoft Dynamics NAV Administrator’s Guide 4.30, section 4.1.

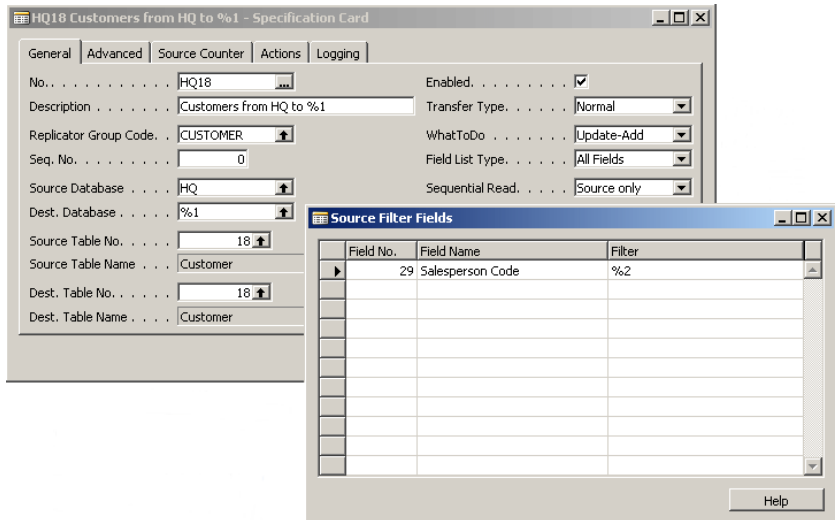
Running a Specification with Tags

If a Specification includes Tags, you can define their value here (see picture below) before running the Specification.



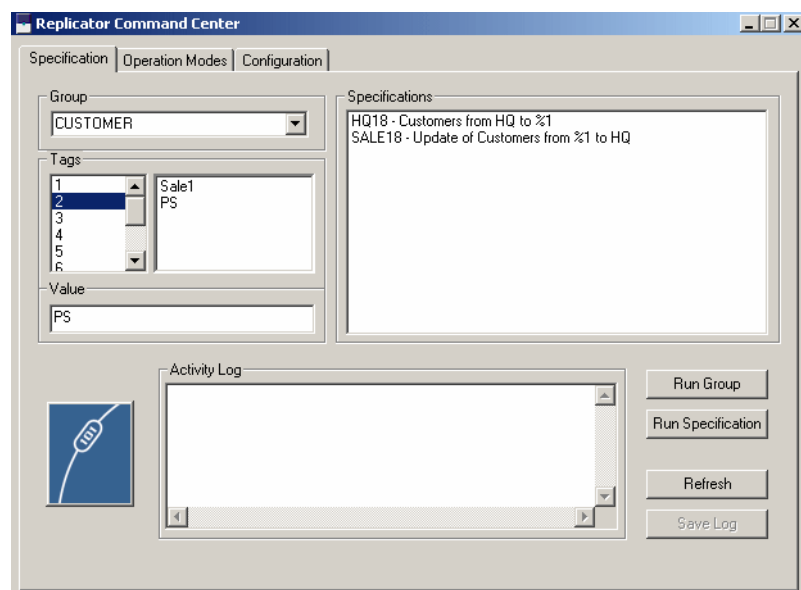
To define Tags you must know in advance which Tags (numbers) have been specified within the Specification selected. Then, you simply mark the specific Tag number in the left column and specify the required value for it on the "Value" line.

For example, in the Replicator Setup Application there is a Specification that includes the following Tags:



This Specification handles replications of customer data from the headquarters to a given salesman.

Now we want to replicate customers to salesman 1, who is set up with the Database Code “SALE1” and has Salesperson Code “PS” from the Command Center. Therefore, we first mark the Specification “HQ-18” and before pressing the button “Run Specifications”, we mark Tag number 1 where we specify “Sale1” and Tag number 2 where we specify “PS”.



By pressing “Run Specifications”, customers will now be replicated from the headquarters to salesman 1 as defined.

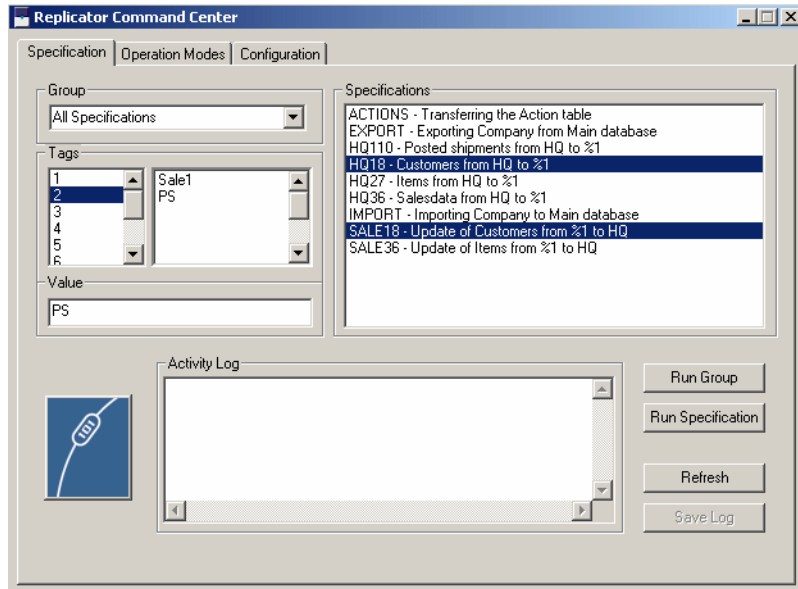
For further information about Tags, please refer to the Replicator for Microsoft Dynamics NAV Administrator’s Guide 4.30, section 4.6.

Selecting several Specifications with Tags

If you select several Specifications that include Tags, the values you define will apply to all the Specifications selected.

For example, continuing the previous example, we now mark both Specification “HQ-18” and “SALE-18”. The Specification “SALE-18” handles replication of customers from a given salesman to the headquarters.

Then we define the following Tags:



All the places (within the range of the Specifications selected) where the Tag “%1” has been specified, “SALE1” will be used. All the places (within the range of Specifications selected) where the Tag “%2” has been specified, “PS” will be used.

If we press the button “Run Specifications”, customers will now be replicated in both directions (from the headquarters to salesman 1 and from salesman 1 to the headquarters).

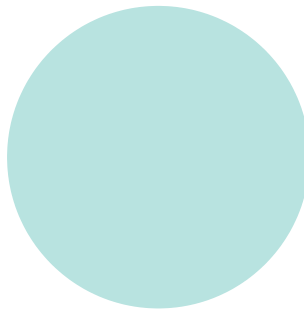
Chapter 4

Operation Modes

This chapter describes the tab “Operation Modes”.

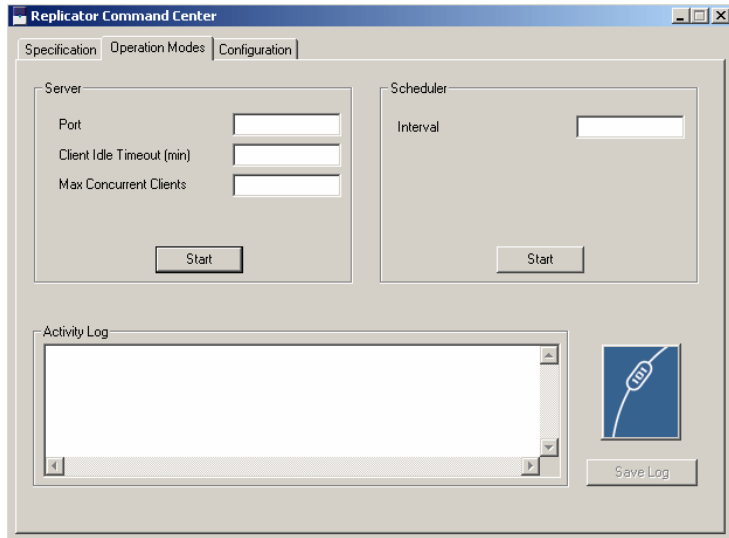
The following topics will be covered:

- The Activity Log window.
- Run Replicator as a server.
- Run the Replicator Scheduler.



4.1 OPERATION MODE

By choosing the tab “Operation Modes” the following window appears:



Here the following options are available:

- Server:
Run Replicator as a server (i.e. starting/activating a Replicator Server)
- Scheduler:
Run the Replicator Scheduler (i.e. starting/activating Scheduler jobs of the type Replicator).

Activity Log

In the Activity Log window you can follow what is taking place while Replicator is running.

If you want to save the information written to the Activity Log window to a file, you can press the “Save Log” button.

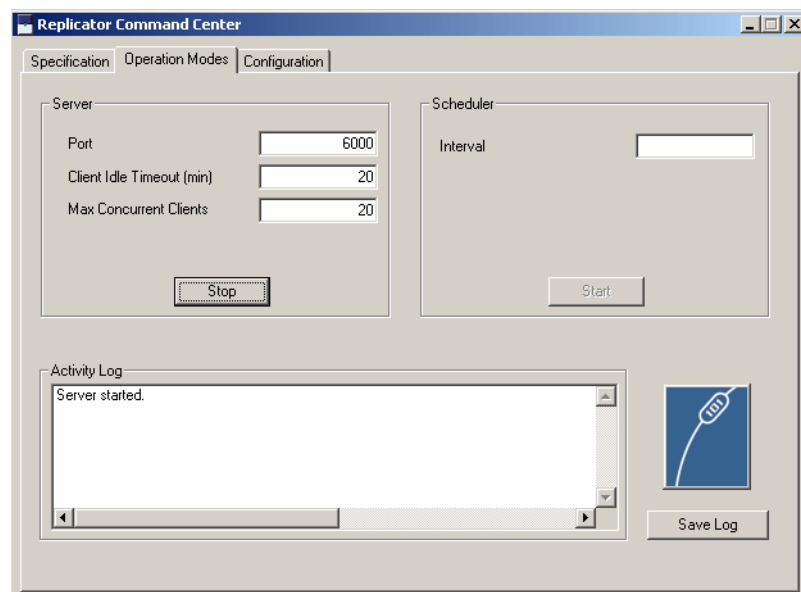
A window appears where you can save the file as a Replicator Log File (*.txt).

4.2 SERVER

If you want to start a Replicator Server from the Command Center, you have to specify the following before pressing the “Start” button:

- Port:
Specify which TCP/IP port number the Replicator Server should use.
- Client Idle Timeout (min):
Specify how long time (minutes) an idle client may be logged on to the Server before being disconnected.
- Max Concurrent Clients:
Specify the maximum number of clients allowed to log on.

When pressing the “Start” button, the Replicator Server will start running. If you want to stop the Server, you simply press the “Stop” button.



For more information about Replicator Server, please refer to the Replicator for Microsoft Dynamics NAV Administrator's Guide 4.30, chapter 5.

4.3 SCHEDULER

If the Configuration loaded contains a fully configured Scheduler, you can start the Scheduler from here.

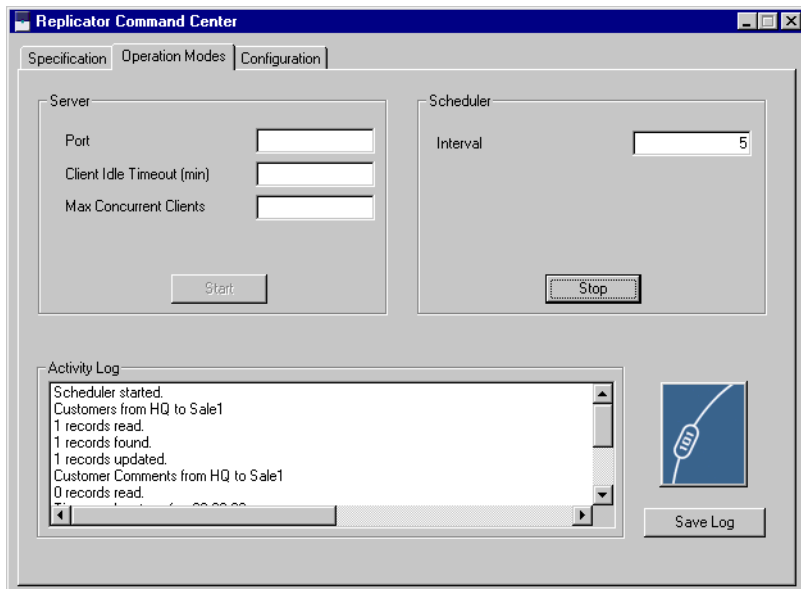
Notice that...

Only Scheduler jobs of the type “Replicator” will be run.

All you need to specify before pushing the “Start” button is:

- Interval:
Specify how long time (seconds) the Scheduler should “sleep” before checking for Scheduler jobs.

If you want to stop the Scheduler again, you simply press the “Stop” button.

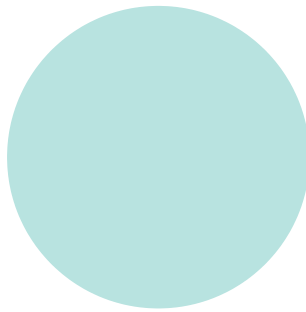


For more information about the Scheduler, please refer to the Replicator for Microsoft Dynamics NAV Administrator’s Guide 4.30, section 4.12.

Appendix A

Troubleshooting


This appendix offers troubleshooting solutions.



A.1 TROUBLESHOOTING

This section contains possible troubleshooting solutions concerning the Replicator Command Center.

Some Specifications are not loaded into the Command Center

 You know that a specific Specification or Specifications have been created within the Configuration that you have loaded, but they do not appear within the Command Center application.

Cause:

Within the Setup Application where you set up and maintain the Configuration the Specification has not been enabled (the field “Enabled” is not marked).

Solution:

Enter the Setup Application and mark the field “Enabled” on the Specification or Specifications in question. Enter the Command Center and load the Configuration once again.

INDEX

A

Activity Log (Specification) 15
Activity Log window (Operation Modes)
22

All Transfers 17
Apply a Configuration 6

C

Command Center
Scheduler 24
Configuration, the tab 6
Apply 6
Enable Trace 7
How to specify 6
Load 6

E

Enable Trace 7

G

Group, the drop down list 17

L

Load a Configuration 6

M

Max Concurrent Clients 23
MBS Navision
Load Configuration from 11
MS Dynamics NAV database 11
Load Configuration from 11
Parameter
Company 12
Database Name 12
Installation Path 12
Local Db. Cache 12
Local Db. Commit Cache 12
Net Type 11
Password 12
Server Name 11
UserID 12

N

Navision 3.56 database 9
Load Configuration from 9
Parameter
Company 9
Database Name 9
Installation Path 10
Local Db. Cache 10
Local Db. Commit Cache 10
NetType 9
Password 10
Server No. 9
UserID 10
Navision Attain
Load Configuration from 11

Navision Financials
Load Configuration from 11

O

Operation mode
Command Center 22
Operation Modes, the tab 22
Activity Log window 22
Save Log 22
Scheduler 24
Server 23

P

Parameters
MS Dynamics NAV database, see
MS Dynamics NAV da-
tabase
Navision 3.56 database, see Navi-
sion 3.56 database

R

Refresh 15
Replicator Scheduler 24
Replicator Server 23
Running Specifications 14

S

Save Log 15
Save Log (Operation Modes) 22
Scheduler (Operation Modes) 24
Server
Command Center 23
Operation Modes 23
Specification, the tab 14
Activity Log window 15
Group drop-down list 17
Run Specification 15
Save Log 15
Specifications window 14

T

Tags (Specification) 18
Trace facility 8
Trace, enable 7
Troubleshooting 26
Type
MS Dynamics NAV database, see
MS Dynamics NAV da-
tabase
Navision 3.56 database, see Navi-
sion 3.56 database

V

Value (Specification) 18