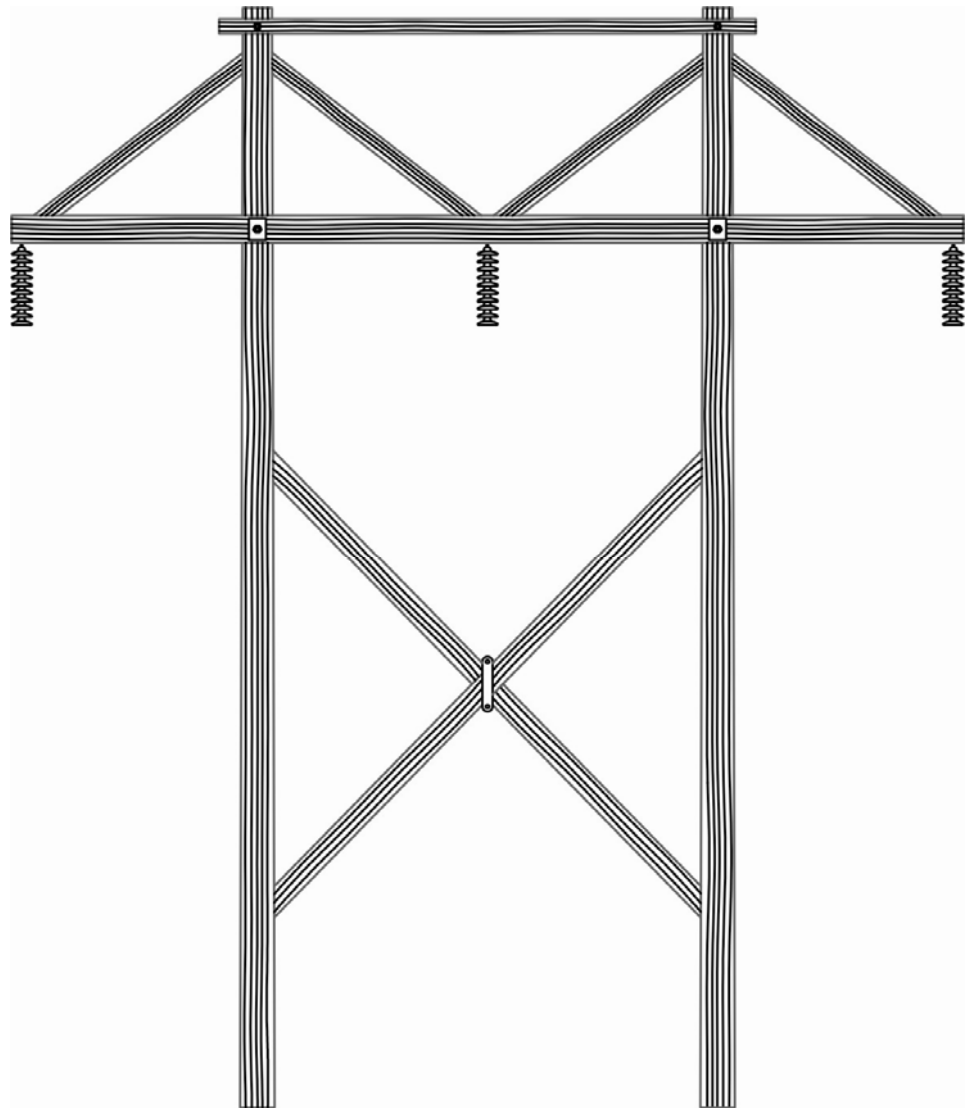




DIS-TRAN
Wood Products, LLC

Transmission Assemblies



Sales & Engineering Office

4725 Hwy 28 E • Pineville, LA 71360
Phone: 318-448-0274 • Fax: 318-487-8234

www.distran.com



DIS-TRAN Wood Products, LLC

Table of Contents

Section 1.....Spacer Assembly
Crossarm Brace

Section 2.....X-Bracing

Section 3.....Vee or Knee Bracing

Section 4.....Miscellaneous Fittings

Section 5.....Swinging Angle Bracket

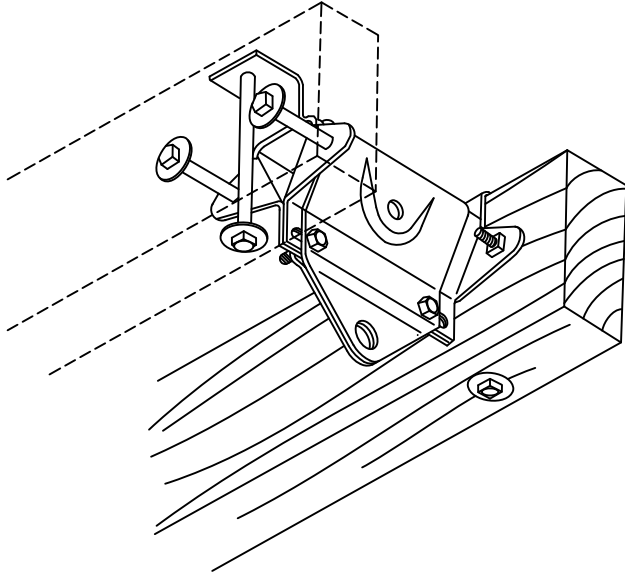
Section 6.....Contact Information



DIS-TRAN
Wood Products, LLC

CROSSARM SPACER ASSEMBLY

**Adjustable Spacer Assembly
for H-Frame Double Arm
Assemblies - 5000 Series**

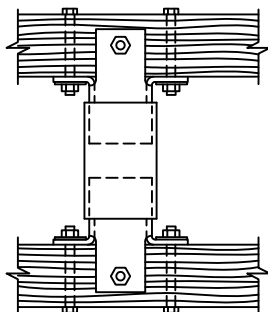
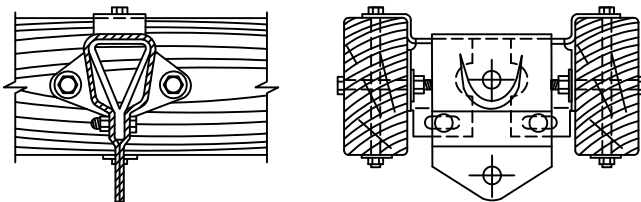


DIS-TRAN's Adjustable Spacer Fittings are used to facilitate double arm H-Frame transmission arm construction.

The distance between side arms can be varied to accommodate different pole diameters. This adjustability also greatly eases field framing operations. The double arm assemblies can be spread wide and slipped down the poles into position where the side arms can then be tightened against the poles.

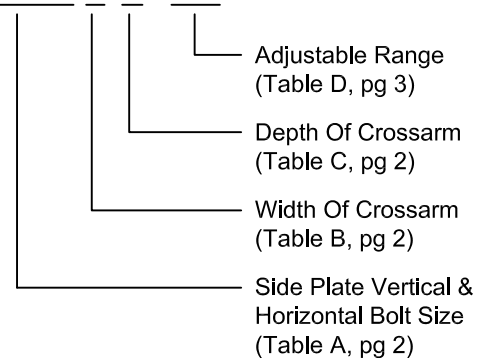
The 5000 allows for brace and insulator attachment while properly transferring loads to side arms.

High quality solid sawn or glued laminated Douglas Fir and tubular steel crossarms are available to order.



ORDERING EXPLANATION:

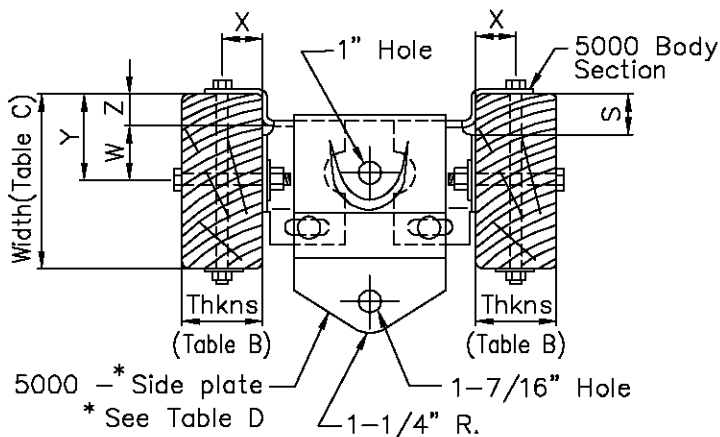
5000.X F L - 100



Also available, are the 5005 Series spacers that are constructed from $\frac{5}{16}$ " plate.

EXPLANATION AND USE OF TABLES:

In ordering a 5000 Spacer Fitting, a code made up from the tables is used to identify the arm size, their spacing, and bolt sizes with which they will be used. For example: a 5000.6FL-100 would indicate a spacer for a 3 3/4" X 8 3/4" arm 8 1/2" to 12 1/2" to adjustment, and tapped 5/8" vertical and horizontal bolts. Table "A" gives the bolt sizes for which the spacer is to be tapped. Tables B & C gives the various dimensions of the finished spacer. Table D (page 3) gives range of adjustment.


TABLE A

Stock No.	Vertical Bolt	Horizontal Bolt
5000.2	1/2"	5/8"
5000.4	5/8"	3/4"
5000.6	5/8"	5/8"
5000.8	3/4"	5/8"
5000.10	1/2"	3/4"
5000.12	3/4"	3/4"
5000.14	5/8"	7/8"
5000.16	TAP 5/8"	PUNCH 15/16"
5000.18	7/8"	7/8"
5000.20	1/2"	PUNCH 1 1/16"
5000.22	PUNCH 13/16"	TAP 3/4"
5000.24	PUNCH 15/16"	TAP 5/8"

TABLE B

Code	Thickness	"X"
A	2 5/8"	1 5/16"
B	2 3/4"	1 3/8"
C	2 7/8"	1 7/16"
D	3 1/2"	1 3/4"
E	3 5/8"	1 13/16"
F	3 3/4"	1 7/8"
G	3 7/8"	1 15/16"
H	4"	2"
J	4 1/2"	2 1/4"
K	4 5/8"	2 5/16"
L	4 3/4"	2 3/8"
M	4 7/8"	2 7/16"
N	5 1/2"	2 3/4"
P	5 3/4"	2 7/8"
Q	3 3/8"	1 11/16"
R	4 3/8"	2 3/16"
S	6"	3"
T	5 1/4"	2 5/8"
U	3 1/4"	1 5/8"
V	7 3/4"	3 7/8"
W	5 1/8"	2 9/16"
X	4 1/8"	2 1/16"
Y	3 1/8"	1 9/16"
Z	6 3/4"	3 3/8"
AA	2"	1"

TABLE C

Code	Width	"Y"	"W"	"Z"	"S"
A	4 3/4"	2 3/32"	2 3/32"	0"	-
B	5"	2 3/32"	2 3/32"	0"	-
C	5 3/4"	2 3/32"	2 3/32"	0"	-
D	6 1/2"	3 1/4"	2 3/32"	1 5/32"	1 5/16"
E	6 3/4"	3 3/8"	2 3/32"	1 9/32"	1 7/16"
F	7 1/2"	3 3/4"	2 3/32"	1 21/32"	1 13/16"
G	7 5/8"	3 13/16"	2 3/32"	1 23/32"	1 7/8"
H	7 3/4"	3 7/8"	2 3/32"	1 25/32"	1 15/16"
J	8 1/2"	4 1/4"	2 3/32"	2 5/32"	2 5/16"
K	8 5/8"	4 5/16"	2 3/32"	2 7/32"	2 3/8"
L	8 3/4"	4 3/8"	2 3/32"	2 9/32"	2 7/16"
M	8 7/8"	4 7/16"	2 3/32"	2 11/32"	2 1/2"
N	9 1/2"	4 3/4"	2 3/32"	2 21/32"	2 13/16"
P	5 3/8"	2 3/32"	2 3/32"	0"	-
Q	10 1/4"	5 1/4"	2 3/32"	3 5/32"	3 5/16"
R	4 1/2"	2 3/32"	2 3/32"	0"	-
S	11 1/2"	5 3/4"	2 3/32"	3 21/32"	3 13/16"
T	6"	2 3/32"	2 3/32"	0"	-
U	9 3/4"	4 7/8"	2 3/32"	2 25/32"	2 15/16"
V	9"	4 1/2"	2 3/32"	2 13/32"	2 9/16"
W	7 1/4"	3 5/8"	2 3/32"	1 17/32"	1 11/16"
X	8"	4"	2 3/32"	1 29/32"	2 1/16"
Y	8 1/4"	4 1/8"	2 3/32"	2 1/32"	2 3/16"
Z	10"	5"	2 3/32"	2 29/32"	3 1/16"
AA	6"	3"	2 3/32"	2 9/32"	1 1/16"

RANGE OF ADJUSTMENT

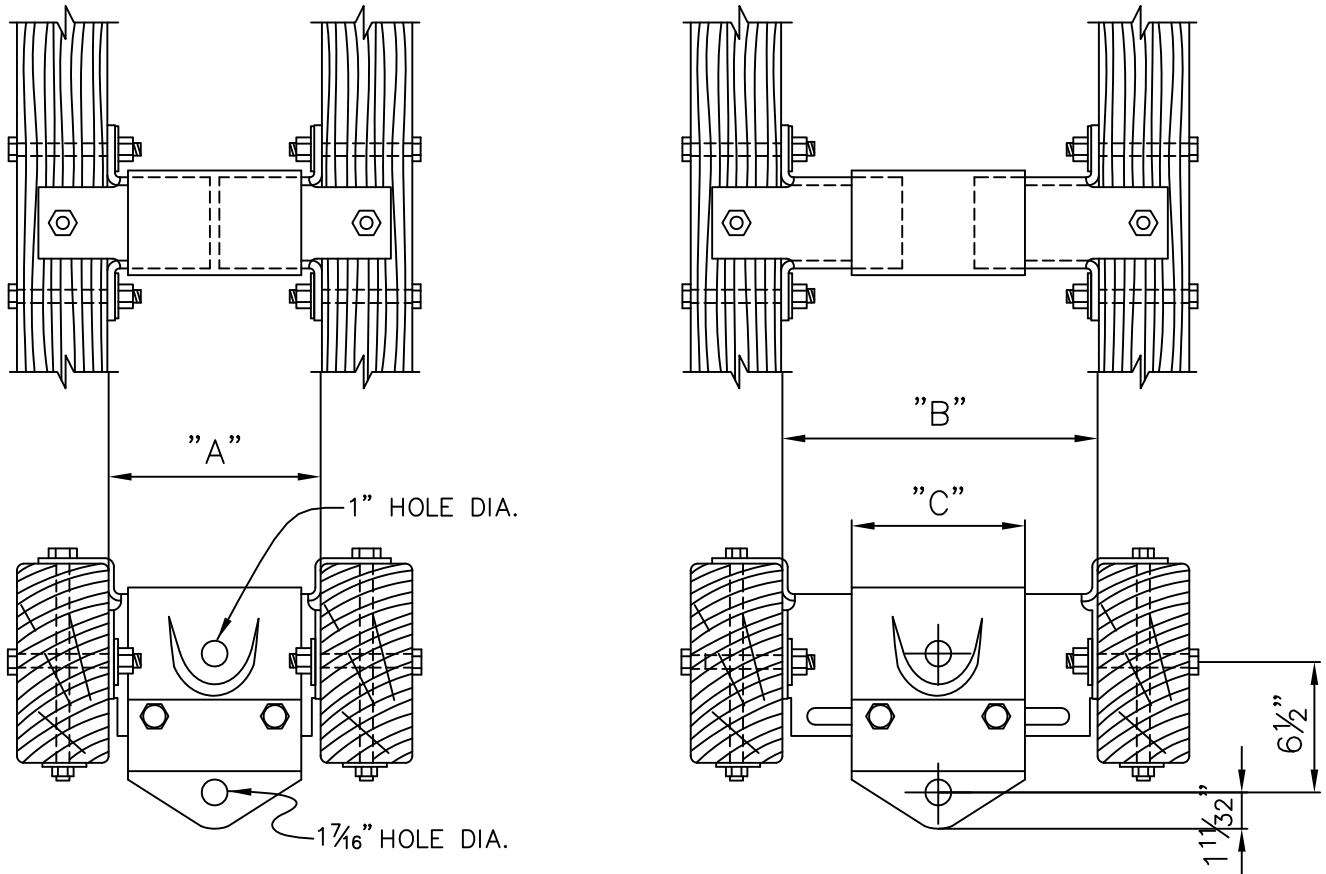
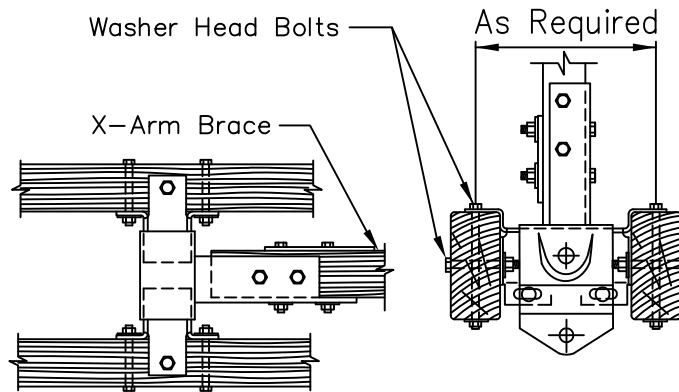
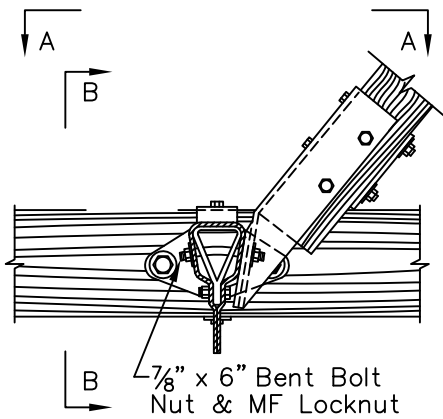
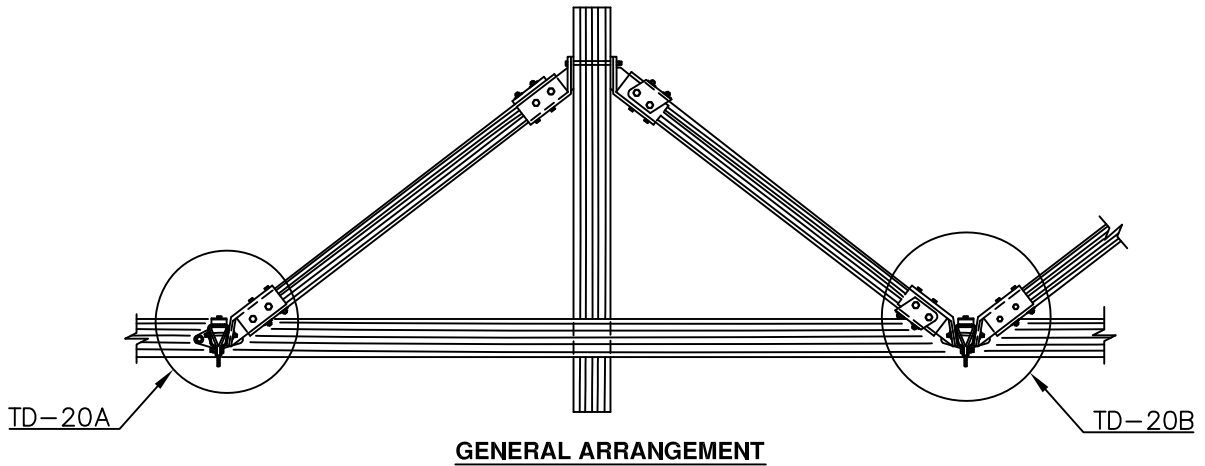


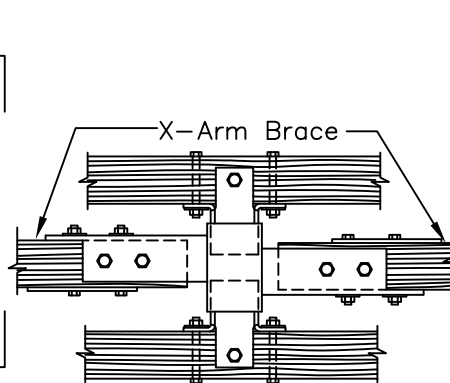
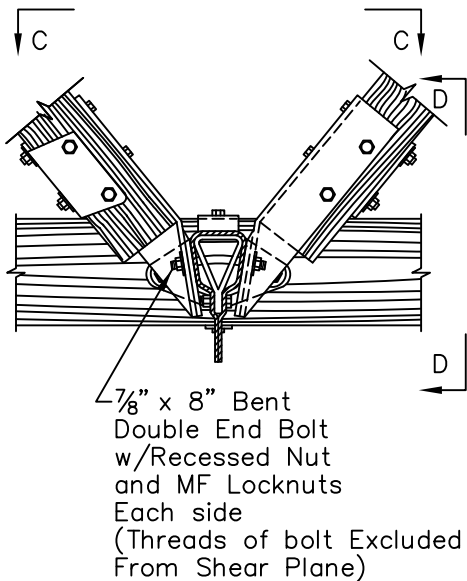
TABLE D

Stock No.	ADJUSTABILITY			Total Adj.
	A	B	C	
5000-100	8 1/2"	12 1/2"	7 3/4"	4"
5000-200	10 1/2"	14 1/2"	9 1/4"	4"
5000-300	12 1/2"	16 1/2"	11 1/4"	4"



SECTION A-A
TD-20A

SECTION B-B



SECTION C-C
TD-20B

SECTION D-D

X-BRACING

MODELS

D2110A

D2110B

D2110C

D2350

D2360

D2510

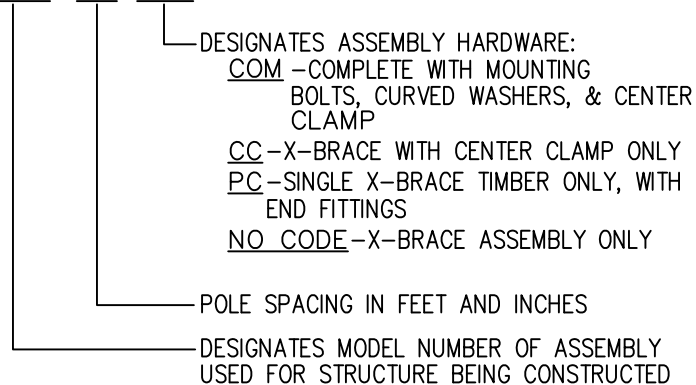
D2610

D2810

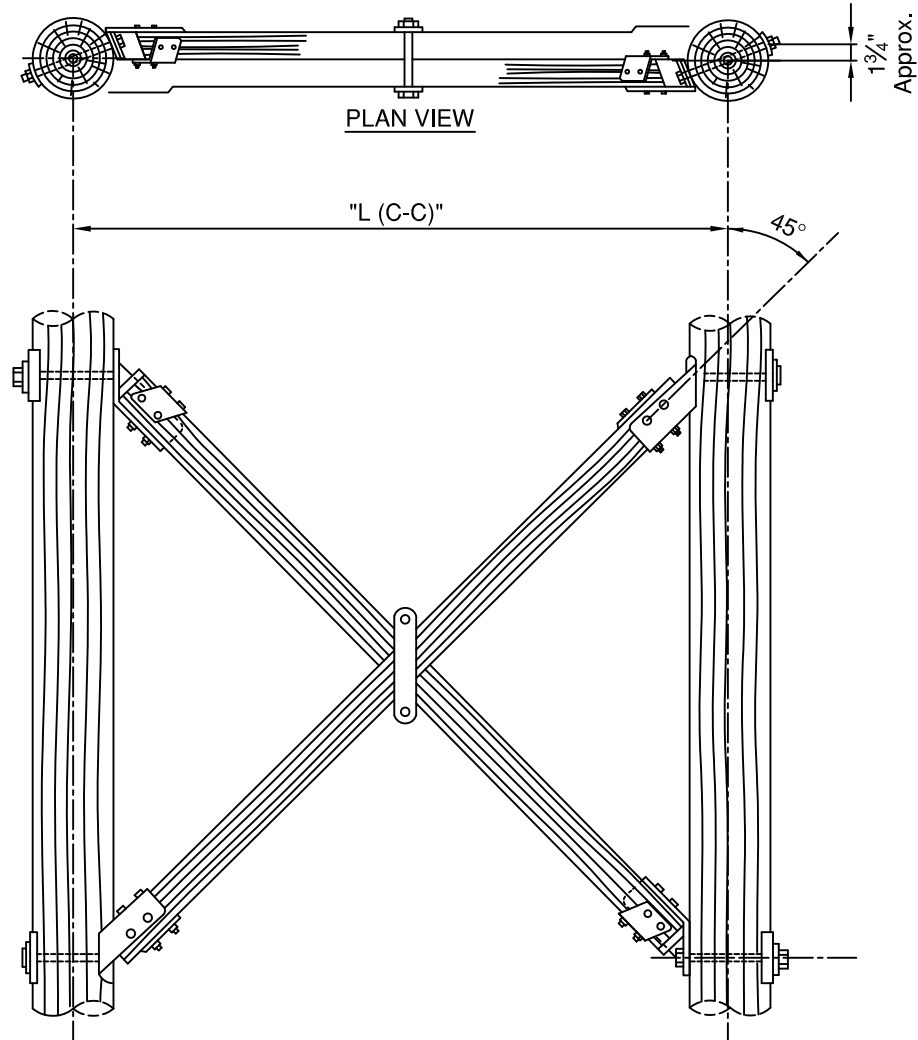
ORDERING CODES

EACH X-BRACE TO BE ORDERED SHALL BE SPECIFIED ACCORDING TO DESIGNATION BELOW:

D2110A . 106 . COM



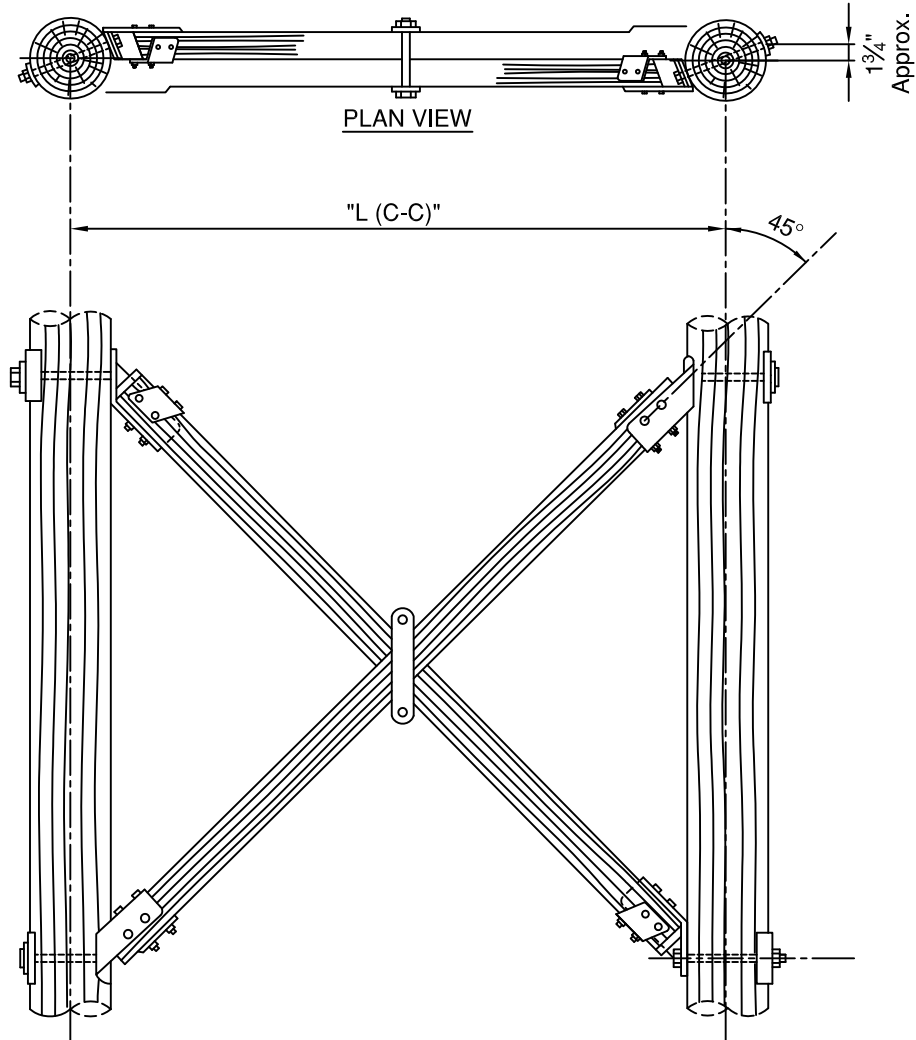
*ALL POLE SPACINGS ARE MOVED IN 6" INCREMENTS ONLY.



D2110A SERIES:

1. $\frac{7}{8}$ " SINGLE BOLT POLE CONNECTION
2. $3\frac{3}{8}$ "W X $4\frac{3}{8}$ "H WOOD SECTIONS
3. $\frac{1}{4}$ " END FITTING THICKNESS
4. MINIMUM NUMBER OF POLE MOUNTING BOLTS ARE SHOWN. IF BOLT SIZE IS NOT SPECIFIED, EACH COMPLETE ASSEMBLY WILL BE SHIPPED WITH (2) 50%-14"x $\frac{7}{8}$ " & (2) 50%-16"x $\frac{7}{8}$ "

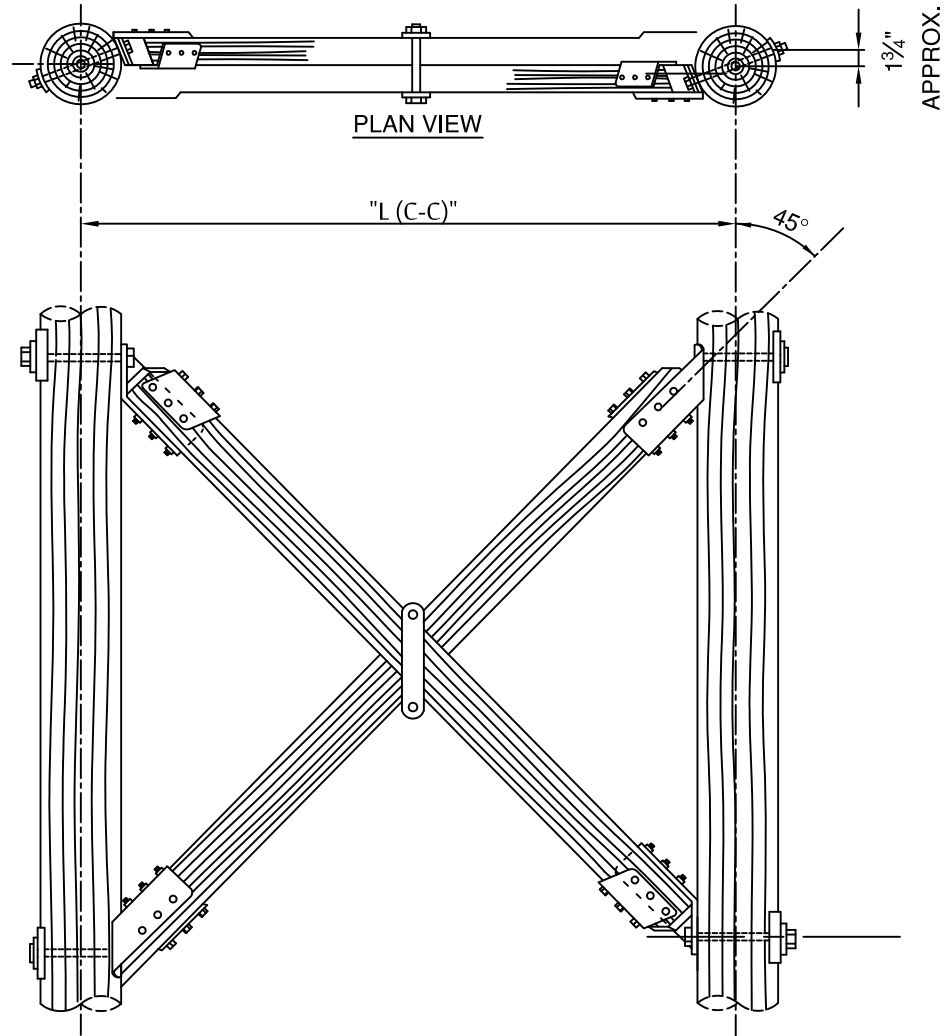
<u>X-BRACE</u>	<u>(L) MAX. POLE SPACING</u>
D2110A	14'-0"



D2110B SERIES:

1. $\frac{7}{8}$ " SINGLE BOLT POLE CONNECTION
2. 3 $\frac{3}{4}$ "W X 5 $\frac{3}{4}$ "H WOOD SECTIONS
3. $\frac{1}{4}$ " END FITTING THICKNESS
4. MINIMUM NUMBER OF POLE MOUNTING BOLTS ARE SHOWN. IF BOLT SIZE IS NOT SPECIFIED, EACH COMPLETE ASSEMBLY WILL BE SHIPPED WITH (2) 50%-14"X $\frac{7}{8}$ " & (2) 50%-16"X $\frac{7}{8}$ "

<u>X-BRACE</u>	<u>(L) MAX. POLE SPACING</u>
D2110B	18'-0"



D2110C SERIES:

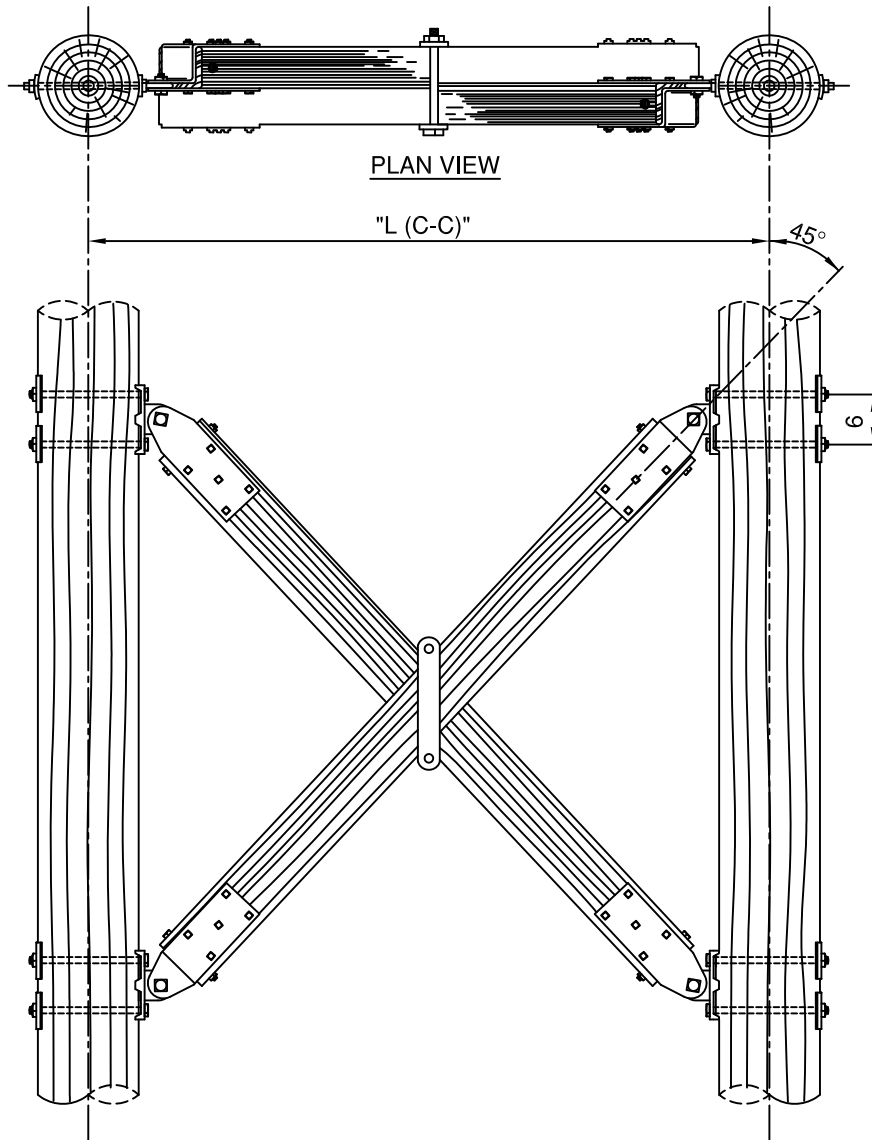
1. 1" SINGLE BOLT POLE CONNECTION
2. $3\frac{5}{8}$ "W X $7\frac{1}{2}$ "H WOOD SECTIONS
3. $\frac{1}{4}$ " END FITTING THICKNESS
4. MINIMUM NUMBER OF POLE MOUNTING BOLTS ARE SHOWN. IF BOLT SIZE IS NOT SPECIFIED, EACH COMPLETE ASSEMBLY WILL BE SHIPPED WITH (2) 50%-14"x1" & (2) 50%-16"x1"

<u>X-BRACE</u>	<u>(L) MAX. POLE SPACING</u>
D2110C	19'-6"

D2110D:

USES SAME TIMBER AND HARDWARE CONFIGURATIONS ONLY WITH $\frac{7}{8}$ " MOUNTING BOLTS.

*TO PLACE ORDERS:
REFER TO ORDERING CODES AT BEGINNING OF SECTION.

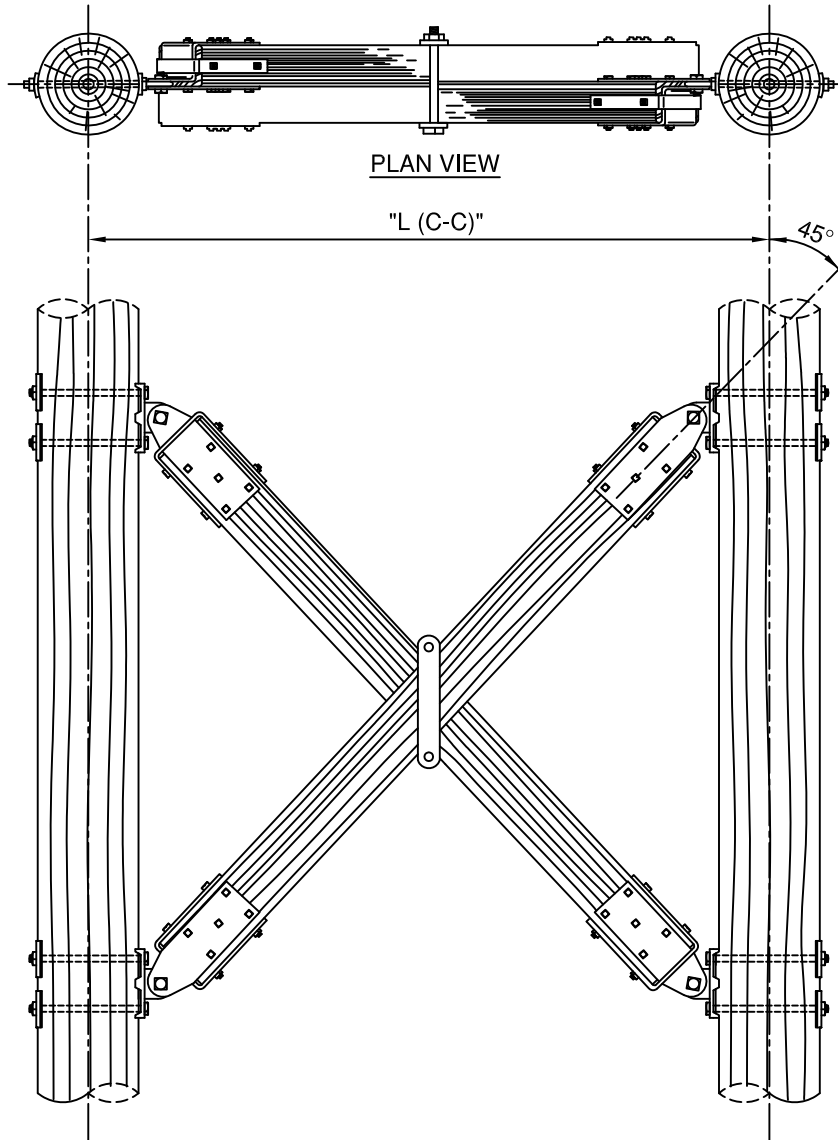


D2350 SERIES:

1. $\frac{7}{8}$ " SINGLE BOLT POLE CONNECTION
2. $\frac{1}{4}$ " END FITTING THICKNESS
3. MINIMUM NUMBER OF POLE MOUNTING BOLTS ARE SHOWN. IF BOLT SIZE IS NOT SPECIFIED, EACH COMPLETE ASSEMBLY WILL BE SHIPPED WITH (2) 50%-14"X $\frac{7}{8}$ " & (2) 50%-16"X $\frac{7}{8}$ "
4. MAX. POLE SPACING (L): 30'-0"

X-BRACE	WOOD X-SECTION
D2350	5 $\frac{1}{8}$ "x6"
D2351	6"x6 $\frac{3}{4}$ "
D2352	5 $\frac{1}{8}$ "x7 $\frac{1}{2}$ "

*TO PLACE ORDERS:
REFER TO ORDERING CODES AT BEGINNING OF SECTION.



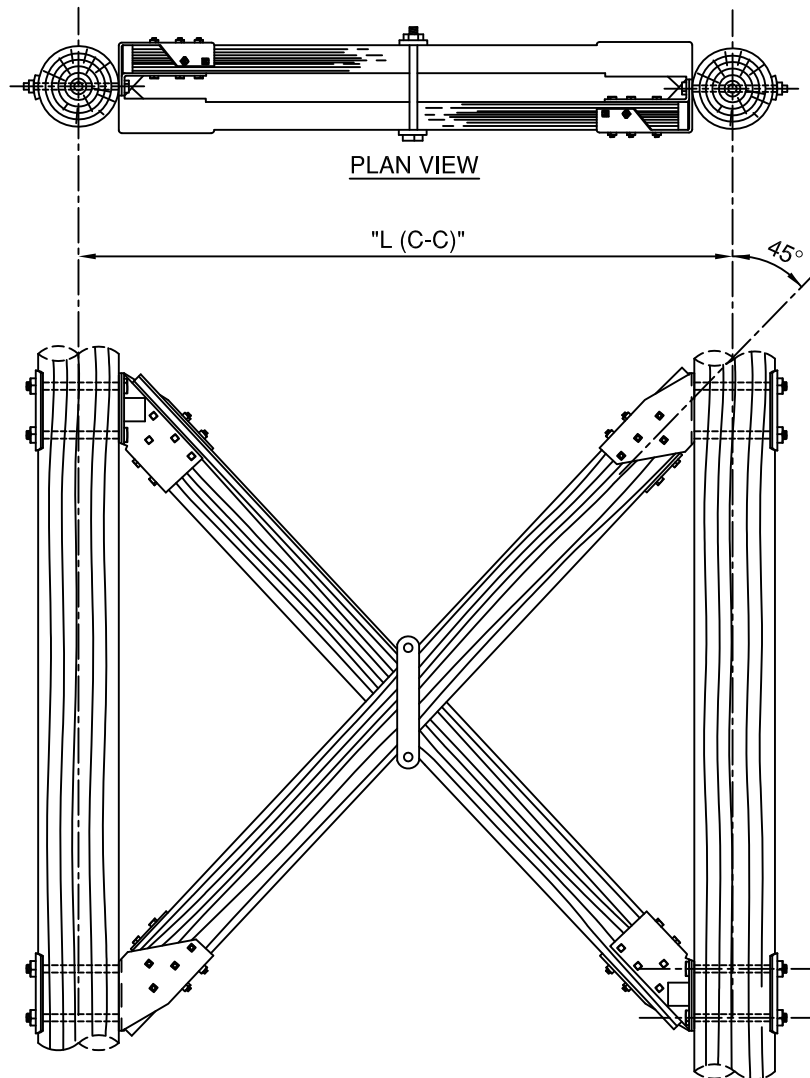
D2360 SERIES:

1. 1" TWO BOLT POLE CONNECTION
2. 6"W X 6³/₄"H WOOD SECTIONS
3. ³/₈" END FITTING THICKNESS
4. MINIMUM NUMBER OF POLE MOUNTING BOLTS ARE SHOWN. IF BOLT SIZE IS NOT SPECIFIED, EACH COMPLETE ASSEMBLY WILL BE SHIPPED WITH (2) 50%-14"x1" & (2) 50%-16"x1"

X-BRACE
D2360

(L) MAX. POLE SPACING
30'-0"

*TO PLACE ORDERS:
REFER TO ORDERING CODES AT BEGINNING OF SECTION.

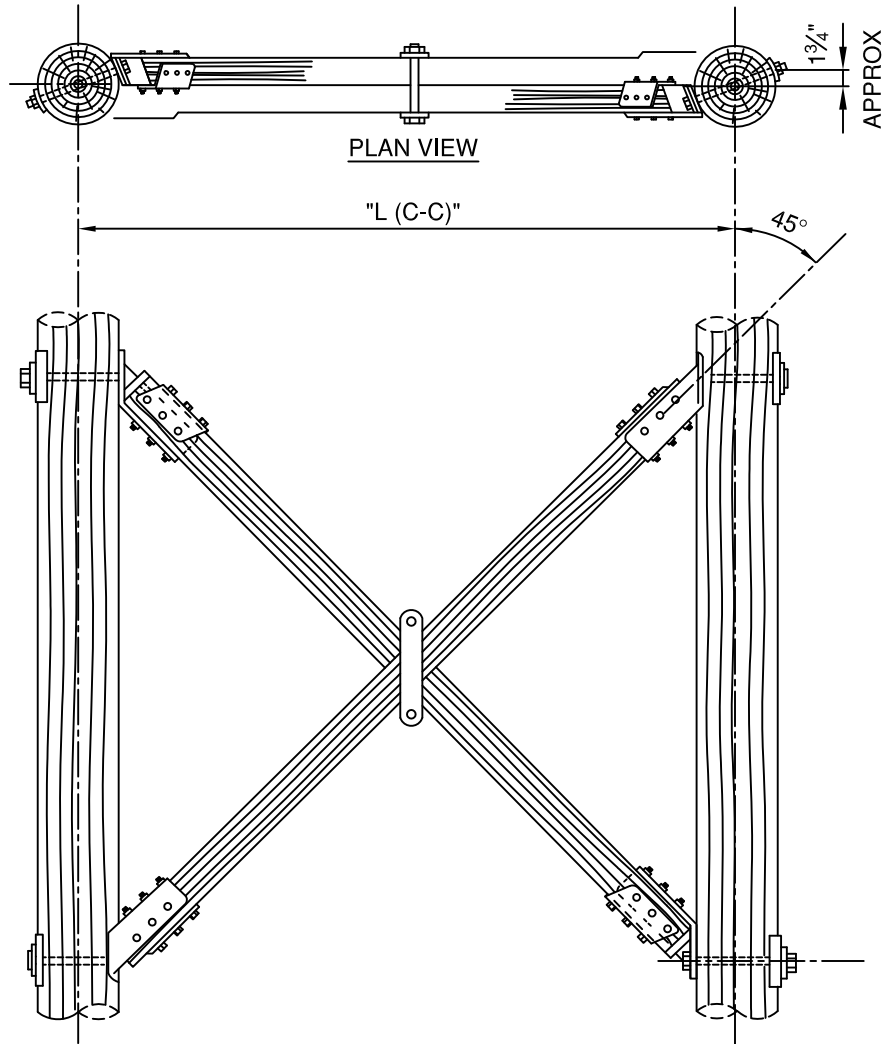


D2510 SERIES:

1. $\frac{7}{8}$ " TWO BOLT POLE CONNECTION
2. $3\frac{1}{16}$ "W X $8\frac{1}{2}$ "H WOOD SECTIONS
3. $\frac{1}{4}$ " END FITTING THICKNESS
4. MINIMUM NUMBER OF POLE MOUNTING BOLTS ARE SHOWN. IF BOLT SIZE IS NOT SPECIFIED, EACH COMPLETE ASSEMBLY WILL BE SHIPPED WITH (2) 50%-14"X $\frac{7}{8}$ " & (2) 50%-16"X $\frac{7}{8}$ "

<u>X-BRACE</u>	<u>(L) MAX. POLE SPACING</u>
D2510	25'-0"

*TO PLACE ORDERS:
REFER TO ORDERING CODES AT BEGINNING OF SECTION.



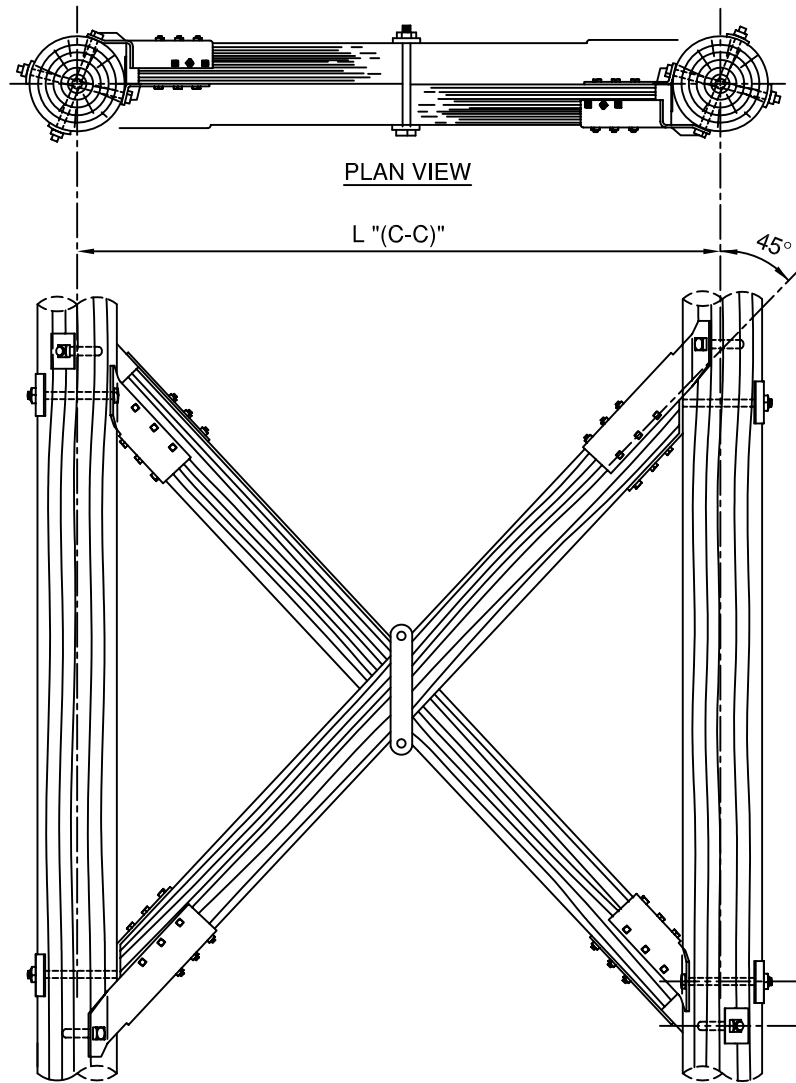
D2610 SERIES:

1. $\frac{7}{8}$ " SINGLE BOLT POLE CONNECTION
2. 3 $\frac{3}{4}$ "W X 5 $\frac{3}{4}$ "H WOOD SECTIONS
3. $\frac{3}{8}$ " END FITTING THICKNESS
4. MINIMUM NUMBER OF POLE MOUNTING BOLTS ARE SHOWN. IF BOLT SIZE IS NOT SPECIFIED, EACH COMPLETE ASSEMBLY WILL BE SHIPPED WITH (2) 50%-14"X $\frac{7}{8}$ " & (2) 50%-16"X $\frac{7}{8}$ "

X-BRACE	(L) MAX. POLE SPACING
D2610	20'-0"

D2610A: USE SAME TIMBER AND HARDWARE CONFIGURATIONS ONLY WITH 1" MOUNTING BOLTS.

*TO PLACE ORDERS:
REFER TO ORDERING CODES AT BEGINNING OF SECTION.



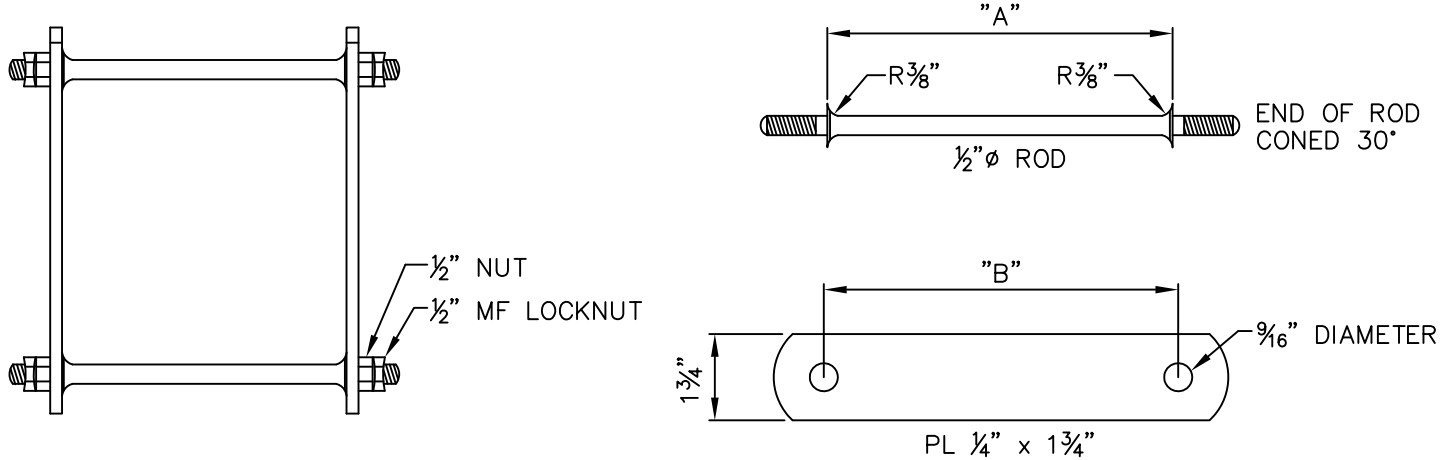
D2810 WRAP AROUND:

1. 7/8" TWO BOLT POLE CONNECTION
2. 4⁵/₈"W X 5⁵/₈"H WOOD SECTIONS
3. 3/8" END FITTING THICKNESS
4. MINIMUM NUMBER OF POLE MOUNTING BOLTS ARE SHOWN. IF BOLT SIZE IS NOT SPECIFIED, EACH COMPLETE ASSEMBLY WILL BE SHIPPED WITH (4) 50%-14"X7/8" & (4) 50%-16"X7/8"

X-BRACE
D2810

(L) MAX. POLE SPACING
30'-0"

*TO PLACE ORDERS:
REFER TO ORDERING CODES AT BEGINNING OF SECTION.



MATERIAL REQ'D FOR ASSEMBLY	
QTY.	DESCRIPTION
2	1/2" ϕ RODS THREADED ON EACH END GRADE A36
2	1/4" X 1 3/4" PL. HOLDING STRAP GRADE A36
4	1/2" ϕ NUTS
4	1/2" ϕ MF LOCKNUTS

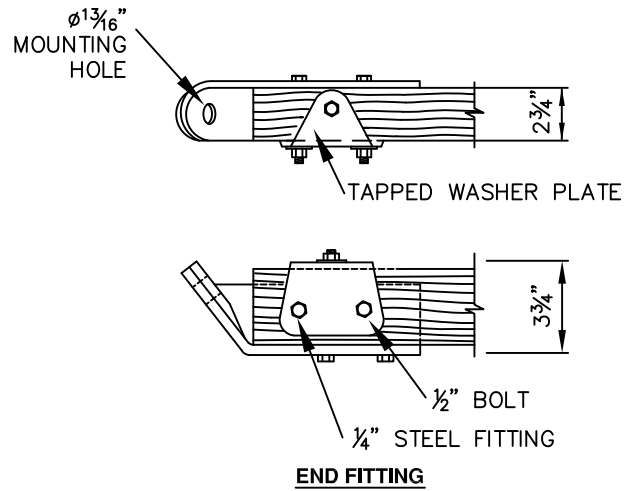
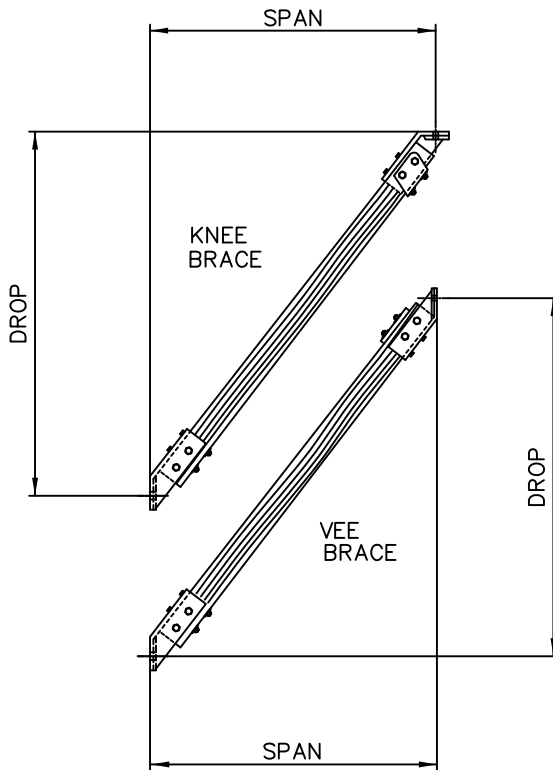
CATALOGUE ORDERING CODES			
Cat. #	X-BRACE WOOD DIMENSIONS	"A" ROD SHOULDER WIDTH	"B" HDG STRAP
6201	3 3/8" x 4 3/8"	6 3/4"	7 5/8"
6202	3 3/4" x 5 3/4"	7 5/8"	9 3/4"
6203	3 5/8" x 5 5/8"	7 1/4"	9 5/8"
6204	3 5/8" x 7 1/2"	7 1/4"	12"
6205	3 5/8" x 8 1/2"	7 1/4"	13 1/2"
6206	4 5/8" x 5 5/8"	9 1/4"	9 3/8"
6207	5 1/8" x 6"	10 1/4"	9 7/8"
6208	5 1/8" x 7 1/2"	10 1/4"	12"
6209	5 1/8" x 9"	10 1/4"	14 1/4"
6210	5 5/8" x 7 1/2"	11 1/4"	12"
6211	4 1/2" x 6 3/4"	9"	11"
6212	6" x 6 3/4"	12"	11"
6213	2 3/4" x 3 1/2"	5 3/4"	6"



DIS-TRAN

Wood Products, LLC

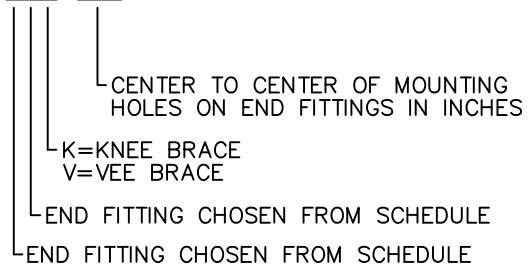
CROSSARM VEE &
KNEE BRACES



END FITTING SCHEDULE	
13/16 HOLE SIZE	FITTING ANGLE
D	30°
B	35°
C	37.5°
E	45°
G	52.5°
H	55°
J	58°
A	25°
L	65°
M	68°

MODEL NUMBER CODE DESCRIPTION:

D1000 * . TCK . C-C



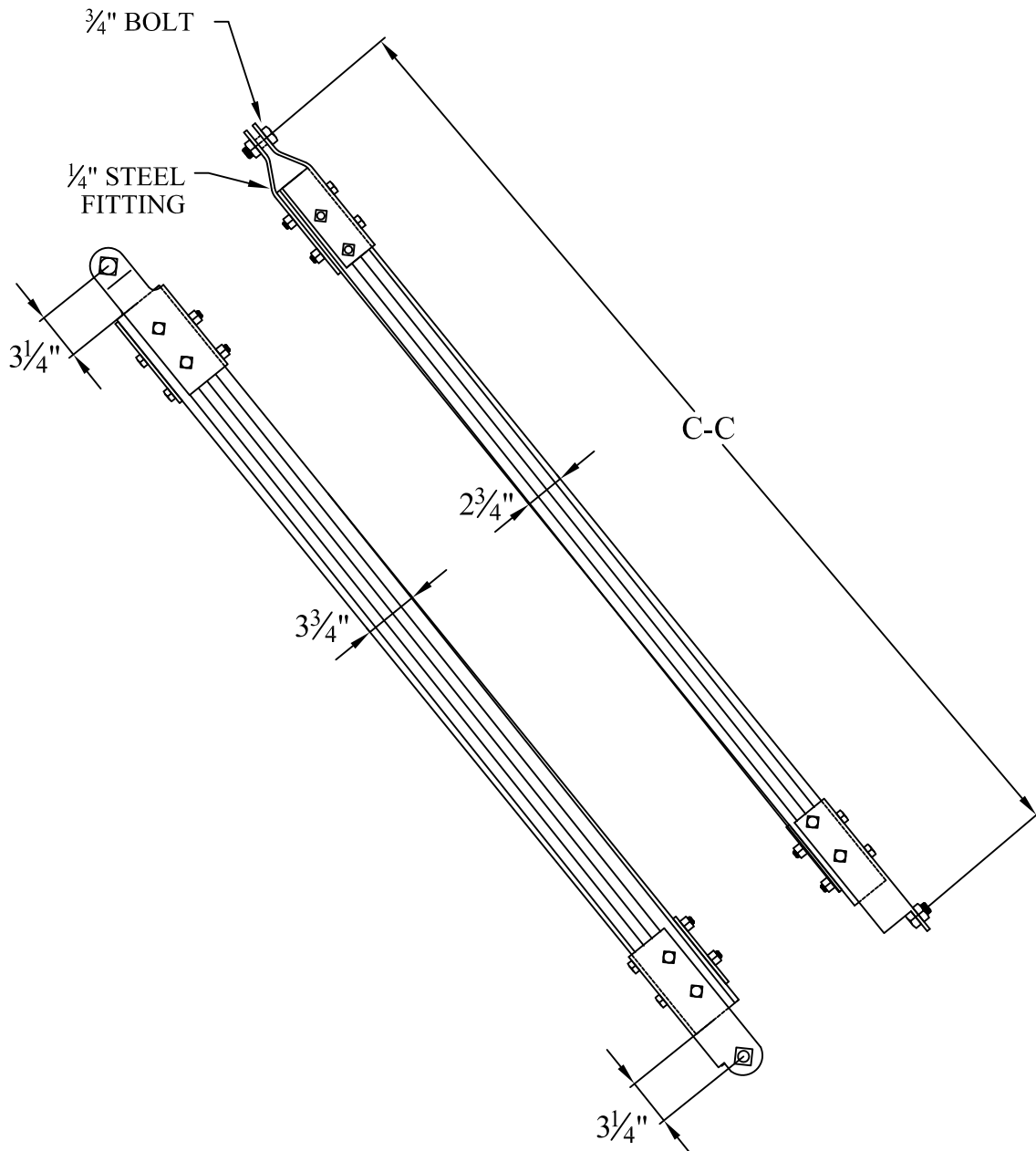
DIS-TRAN's Vee or Knee braces are manufactured from high quality Douglas Fir. Fittings are galvanized per ASTM-A123, punched and tapped for 1/2" bolts. When ordering, please specify fitting angles and C-C length. All braces are quoted individually with a price per each brace, and are quoted without pole mounting hardware.

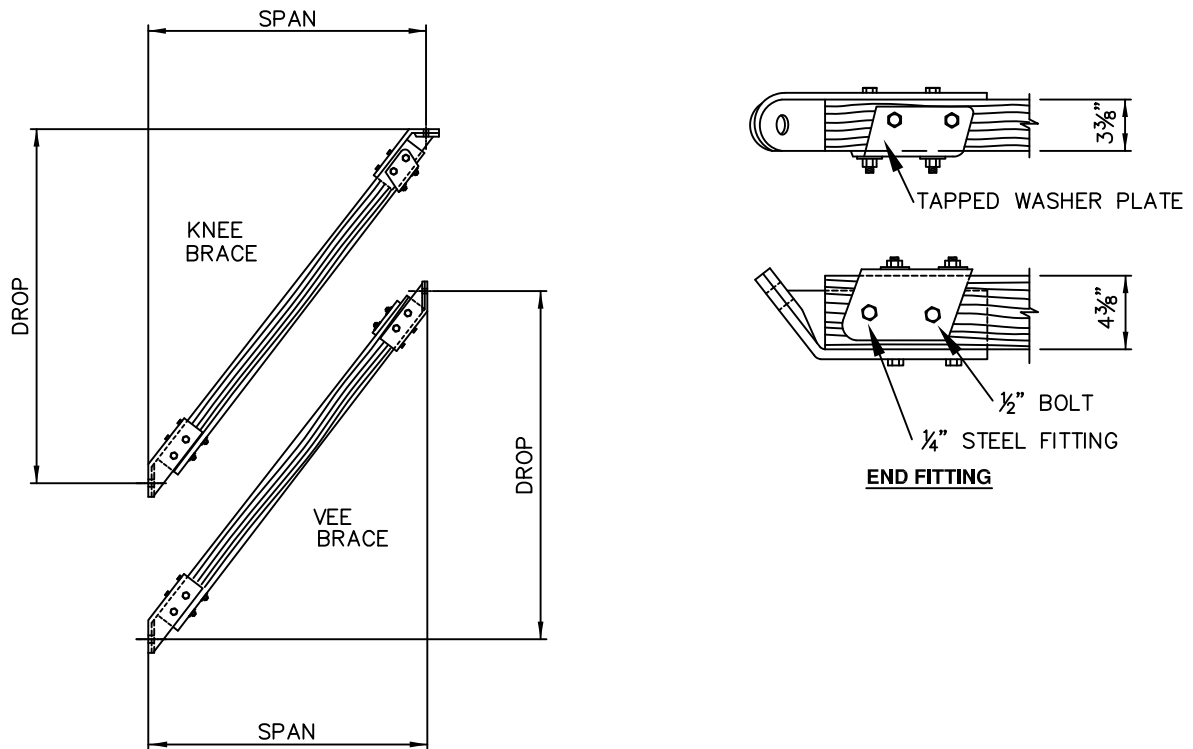


DIS-TRAN's D1010 Vee Braces are made from 2³/₄" x 3³/₄" wood braces and 1/4" hot dip galvanized end fittings. All end fittings are hot dip galvanized per ASTM-A123 with standard holes for 3/4" mounting bolts.

Ordering Example:
D1010 . 95

└ C-C length in inches.

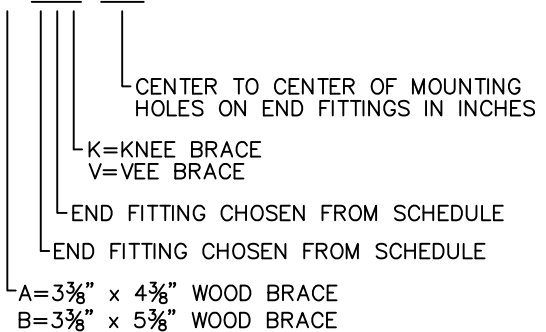




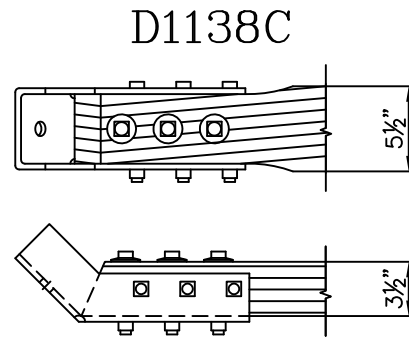
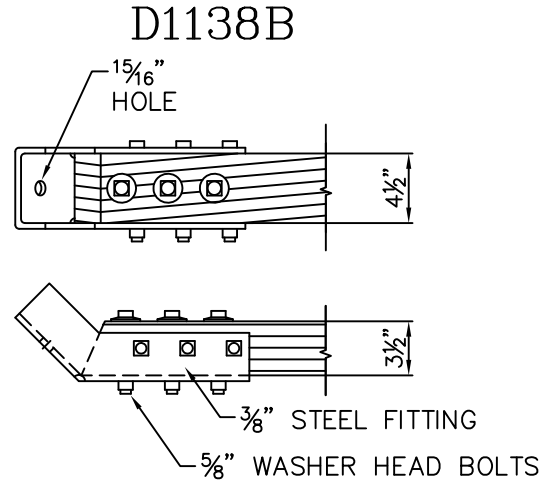
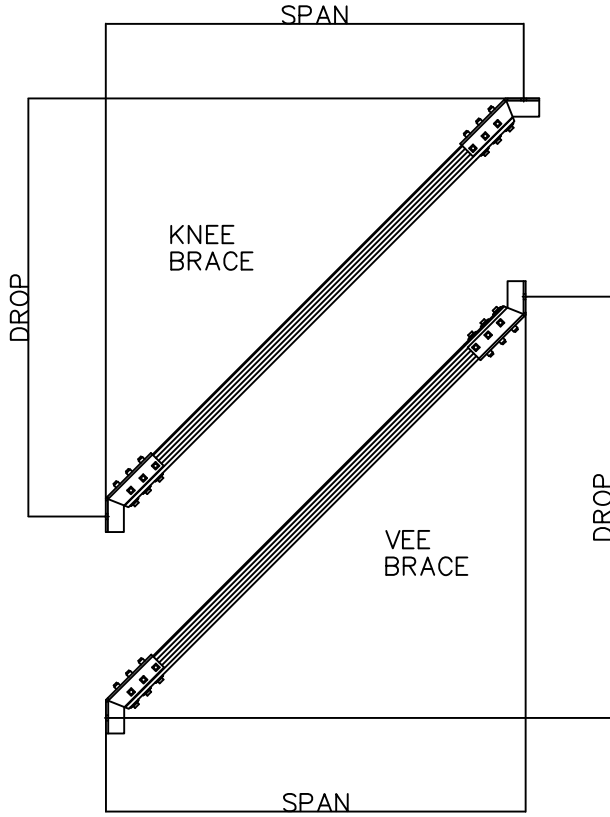
END FITTING SCHEDULE		
13/16 HOLE SIZE	15/16 HOLE SIZE	FITTING ANGLE
	D	30°
R	B	35°
T	C	37.5°
U	E	45°
W	G	52.5°
X	H	55°
	J	58°
	A	25°
	L	65°
	M	68°

MODEL NUMBER CODE DESCRIPTION:

D1100 * . TCK . C-C



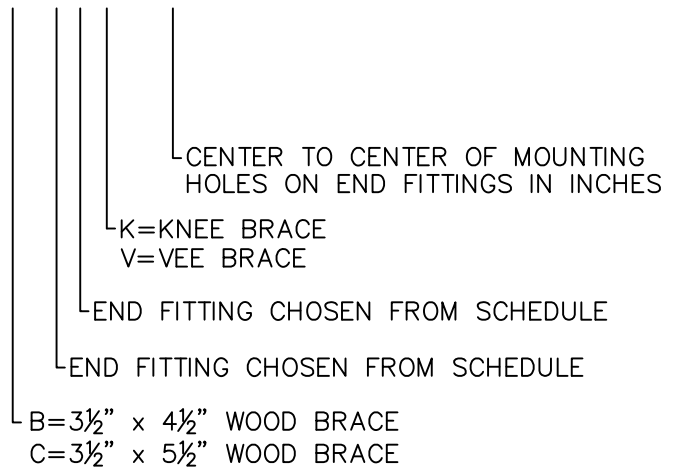
DIS-TRAN's Vee or Knee braces are manufactured from high quality Douglas Fir. Fittings are galvanized per ASTM-A123, punched and tapped for 1/2" bolts. When ordering, please specify fitting angles, C-C length and mounting bolt sizes. All braces are quoted individually with a price per each brace, and are quoted without pole mounting hardware.



SCHEDULE	
15/16" HOLE SIZE	FITTING ANGLE
D	30°
B	35°
C	37.5°
E	45°
G	52.5°
H	55°
J	58°
A	25°
L	65°
M	68°

ORDERING CODE DESCRIPTION:

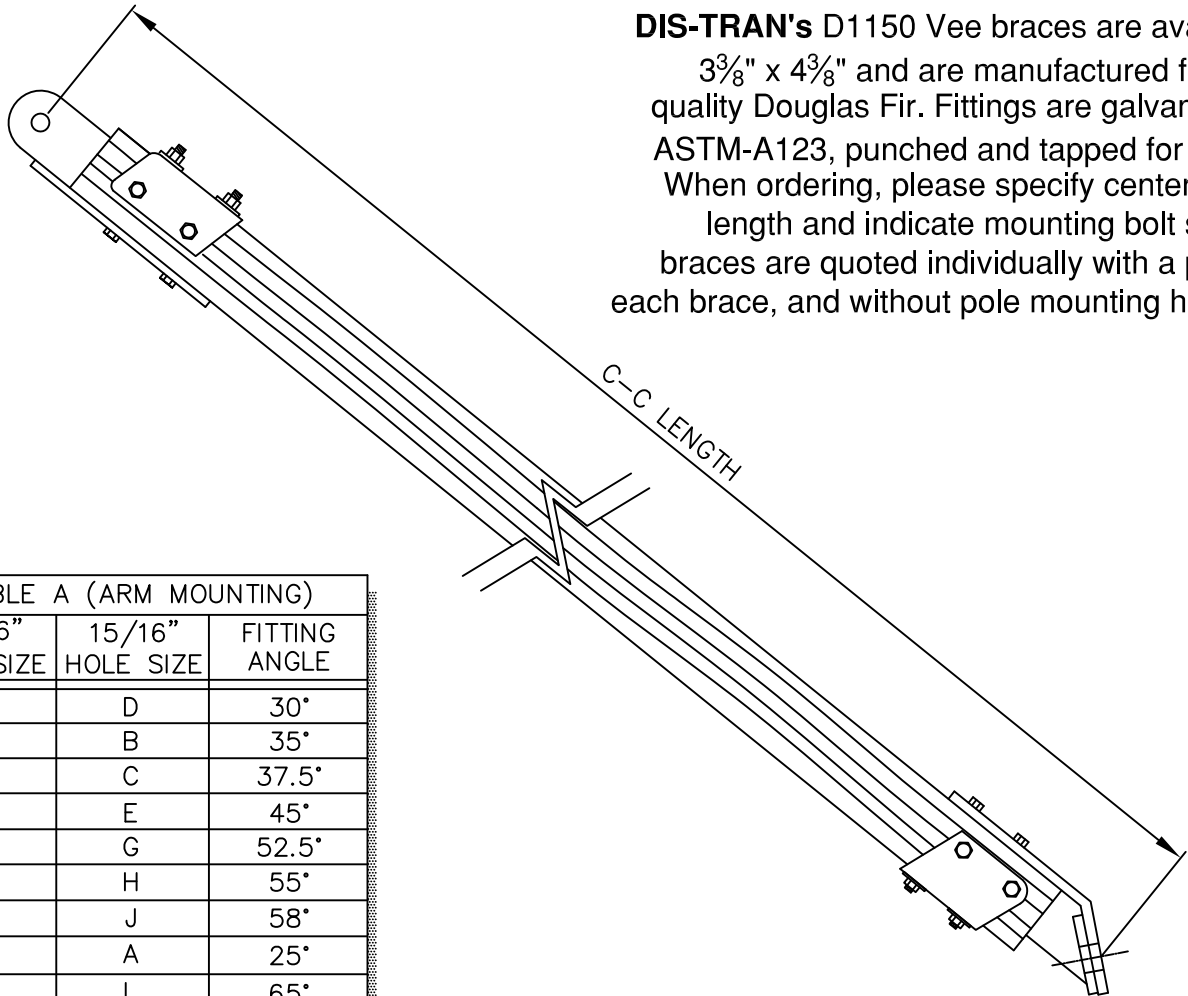
D1138 * . ACK . 116



DIS-TRAN's D1138B/C Vee/Knee braces are manufactured from high quality Douglas Fir. Fittings are fabricated from 3/8" steel, galvanized per ASTM-A123, punched and tapped for 5/8" bolts. 15/16" mounting holes are standard. When ordering, please specify center - center length. All braces are quoted individually with a price per each brace, and are quoted without pole mounting hardware.



DIS-TRAN's D1150 Vee braces are available in 3³/₈" x 4³/₈" and are manufactured from high quality Douglas Fir. Fittings are galvanized per ASTM-A123, punched and tapped for 1/2" bolts. When ordering, please specify center - center length and indicate mounting bolt sizes. All braces are quoted individually with a price per each brace, and without pole mounting hardware.



13/16" HOLE SIZE	15/16" HOLE SIZE	FITTING ANGLE
	D	30°
R	B	35°
T	C	37.5°
U	E	45°
W	G	52.5°
X	H	55°
	J	58°
	A	25°
	L	65°
	M	68°

13/16" HOLE SIZE	15/16" HOLE SIZE
B	C

ORDERING CODE DESCRIPTION:

D1150 AC . 116 . P

- P-PAIR
- LH-LEFT HAND
- RH-RIGHT HAND
- CENTER TO CENTER OF MOUNTING HOLES ON END FITTINGS IN INCHES
- (POLE SIDE) END FITTING CHOSEN FROM TABLE B
- (ARM SIDE) END FITTING CHOSEN FROM TABLE A



D1200 & D1200T TENSION BRACE

DIS-TRAN's D1200 Tension Braces are made from 3³/₈" x 4³/₈" wood braces and 1/4" galvanized end fittings. All end fittings are hot dip galvanized per ASTM-A123 standards with 1⁵/₁₆" standard mounting holes for 7/8" mounting bolts.

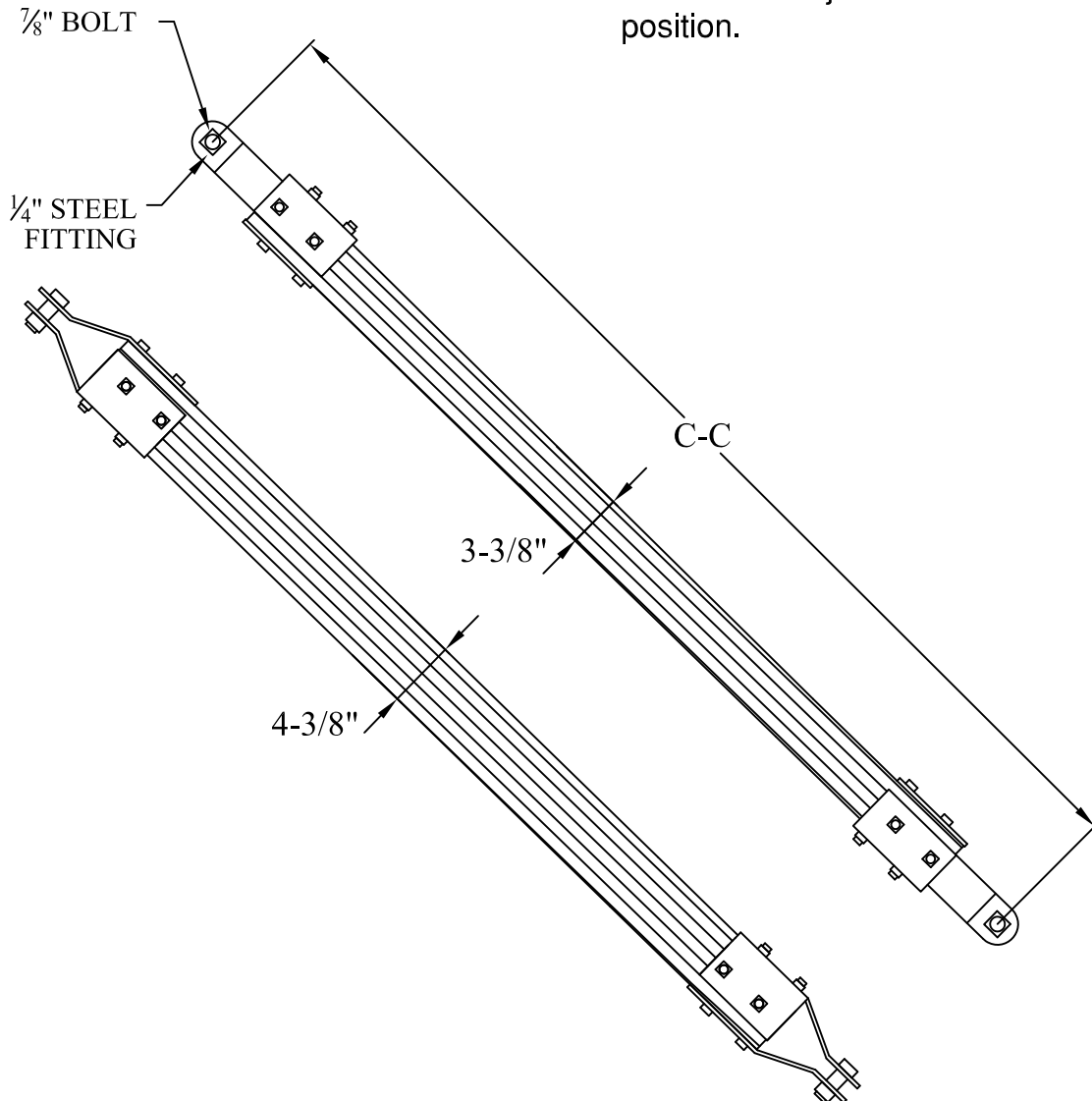
Ordering Example:

D1200 . 130

└ C-C length in inches.

D1200T . 130

The D1200T Tension Brace includes a 7/8" x 12" Turnbuckle resulting in a plus or minus 6" of adjustment from the center position.



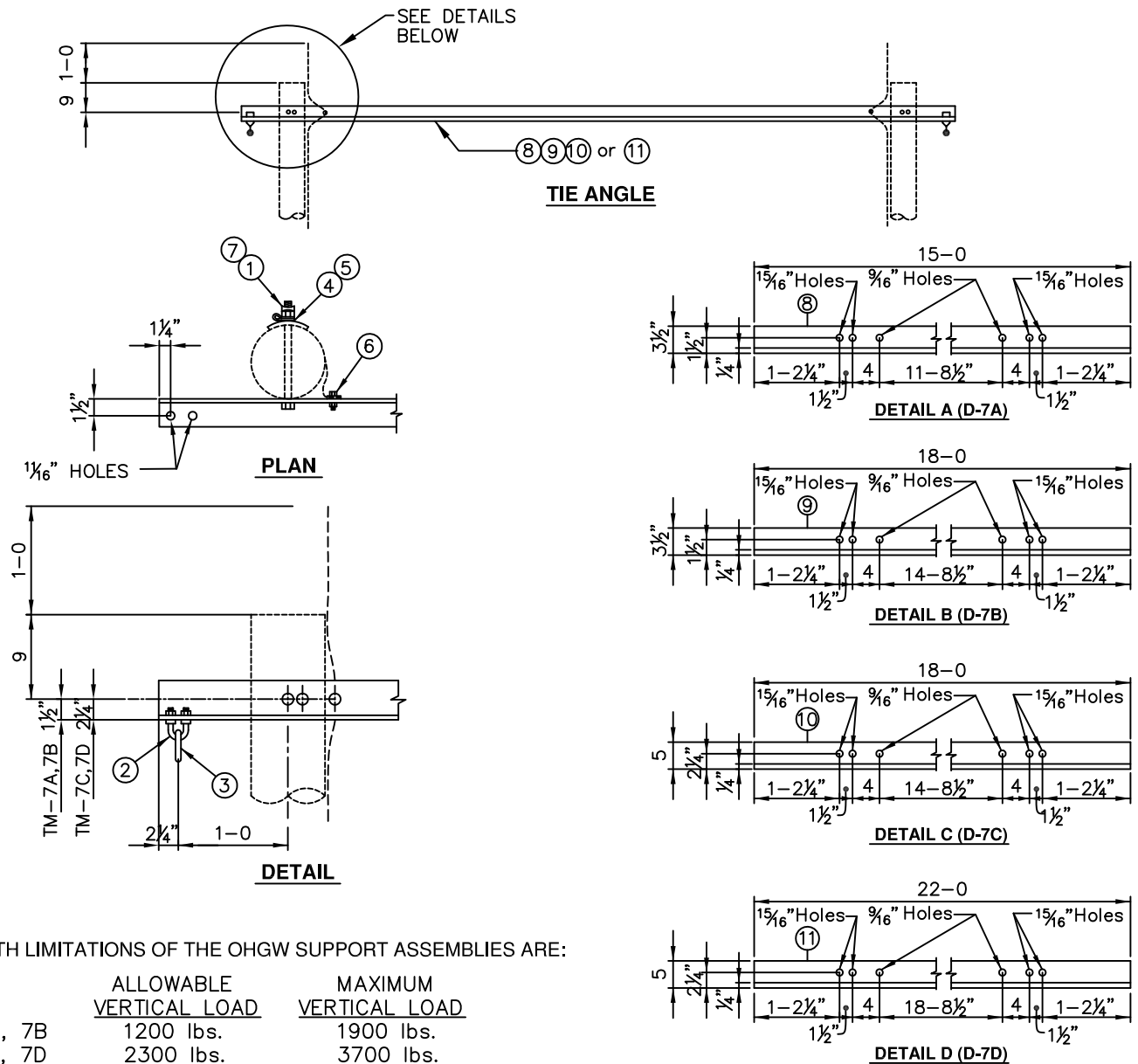


DIS-TRAN
Wood Products, LLC

MISCELLANEOUS FITTINGS



DRG. REF.	D-7				LIST OF MATERIALS				
	A	B	C	D	DESCRIPTION	ITEM	DET.	CODE No.	
1	2	2	2	2	7/8" BOLT, MACHINE, BY REQ'D LENGTH	c			
2	2	2	2	2	5/8" U-BOLT, WITH 4 NUTS				
3	2	2	2	2	CHAIN LINK, 5/8" X 2 1/4"	br			
4	2	2	2	2	WASHER, CURVED, 4" SQ. X 1/4" X 1 5/16" HOLE	d			
5	2	2	2	2	WASHER, SPRING, 1 5/16" HOLE	aw			
6	2	2	2	2	CLAMP, GROUNDWIRE, 1/2"	db			
7	2	2	2	2	7/8" LOCKNUT, MF TYPE	ek			
8	1	-	-	-	ANGLE, TIE, 3 1/2" X 3" X 1/4" X 15-0	-	A		
9	-	1	-	-	ANGLE, TIE, 3 1/2" X 3" X 1/4" X 18-0	-	B		
10	-	-	1	-	ANGLE, TIE, 5" X 3" X 1/4" X 18-0	-	C		
11	-	-	-	1	ANGLE, TIE, 5" X 3" X 1/4" X 22-0	-	D		



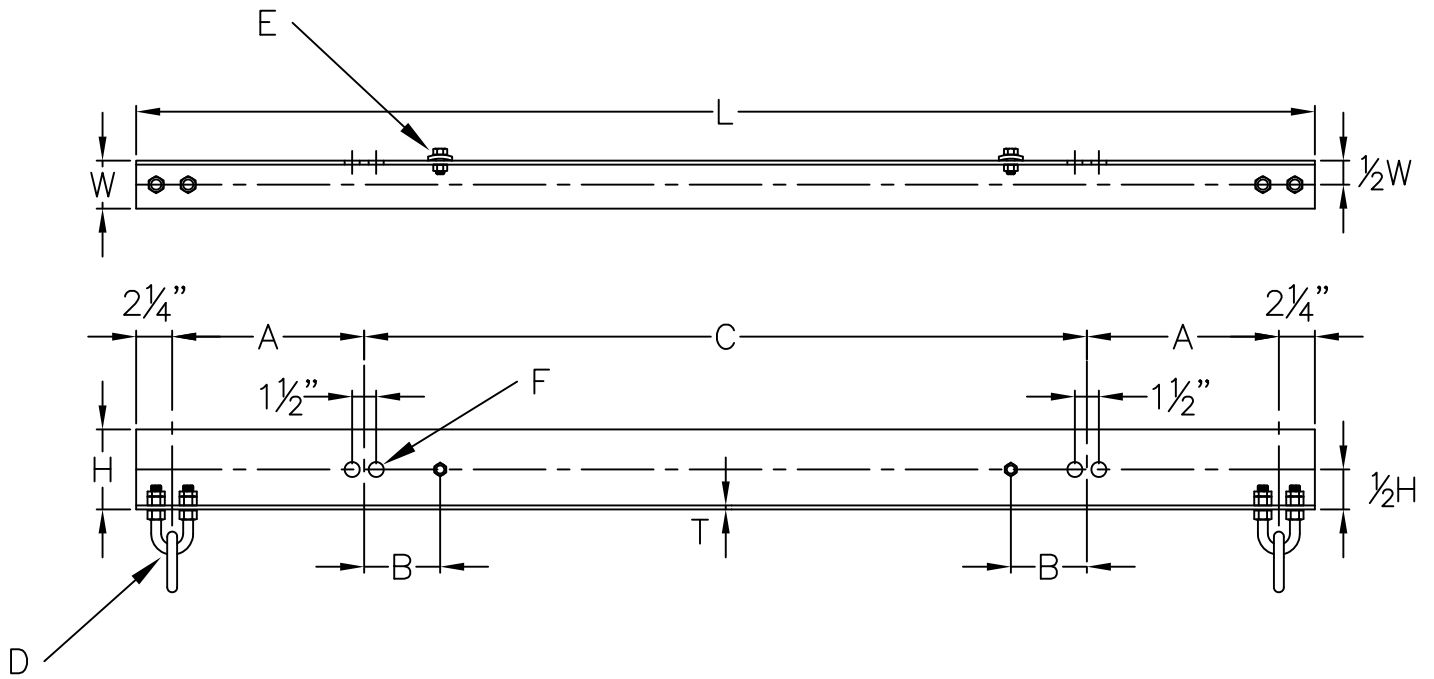
NOTES:

1. THE STRENGTH LIMITATIONS OF THE OHGW SUPPORT ASSEMBLIES ARE:

	ALLOWABLE VERTICAL LOAD	MAXIMUM VERTICAL LOAD
D-7A, 7B	1200 lbs.	1900 lbs.
D-7C, 7D	2300 lbs.	3700 lbs.

2. TIE ANGLE STEEL SHALL CONFORM TO ASTM A36. ANGLE SHALL BE HOT DIP GALVANIZED PER ASTM A123.

3. SUBSTITUTE D-7C FOR D-7B WHEN SPECIFIED ON D3010 OR D3011.



A	CANTILEVER LENGTH, INCHES & NUMBER OF 1/8" INCREMENTS
B	GROUNDWIRE BOLT LOCATION, INCHES & NUMBER OF 1/8" INCREMENTS
C	POLE SPACING, FEET & INCHES
D	5/8" U-BOLT AND CHAIN ASSEMBLY
E	1/2" X 1 1/2" GROUNDWIRE BOLT
F	POLE MOUNTING HOLE DIAMETER (TABLE 2)

ORDERING EXAMPLE:

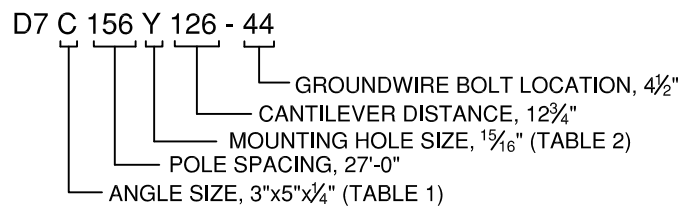
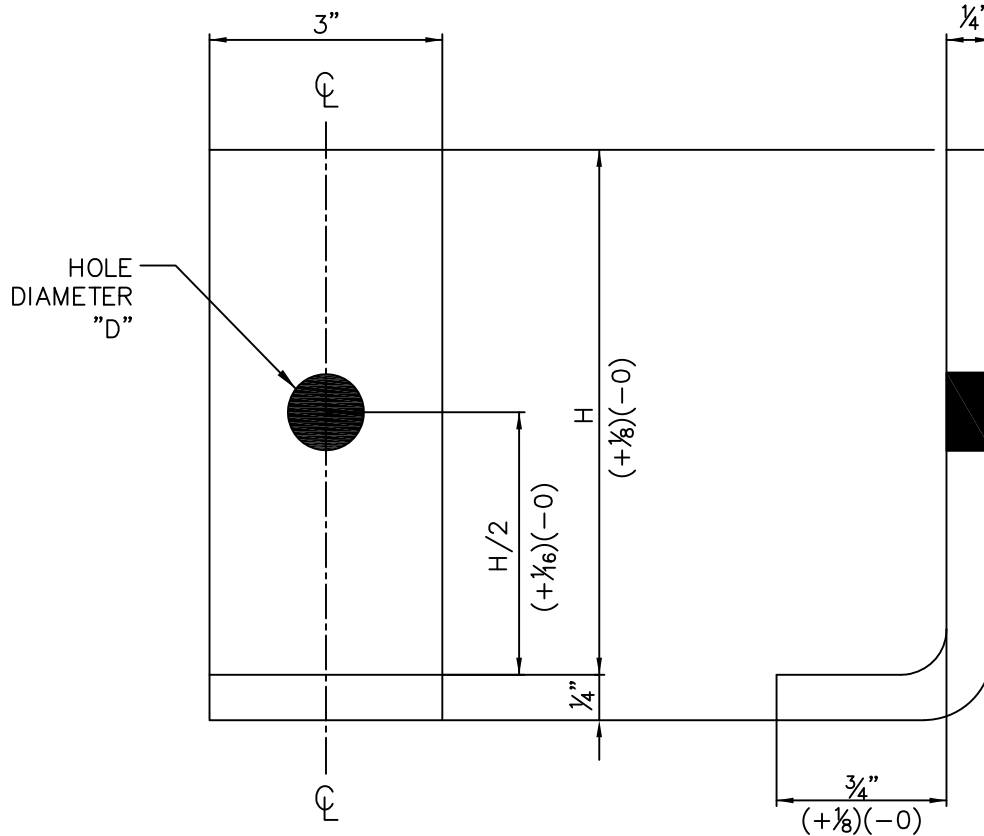


TABLE 1:
ANGLE SIZE

CODE	W	H	T
A	3	3	1/4"
B	3	3 1/2"	1/4"
C	3	5	1/4"
D	3	5	5/16"
E	3	4	1/4"

TABLE 2:
MOUNTING HOLE DIAMETERS

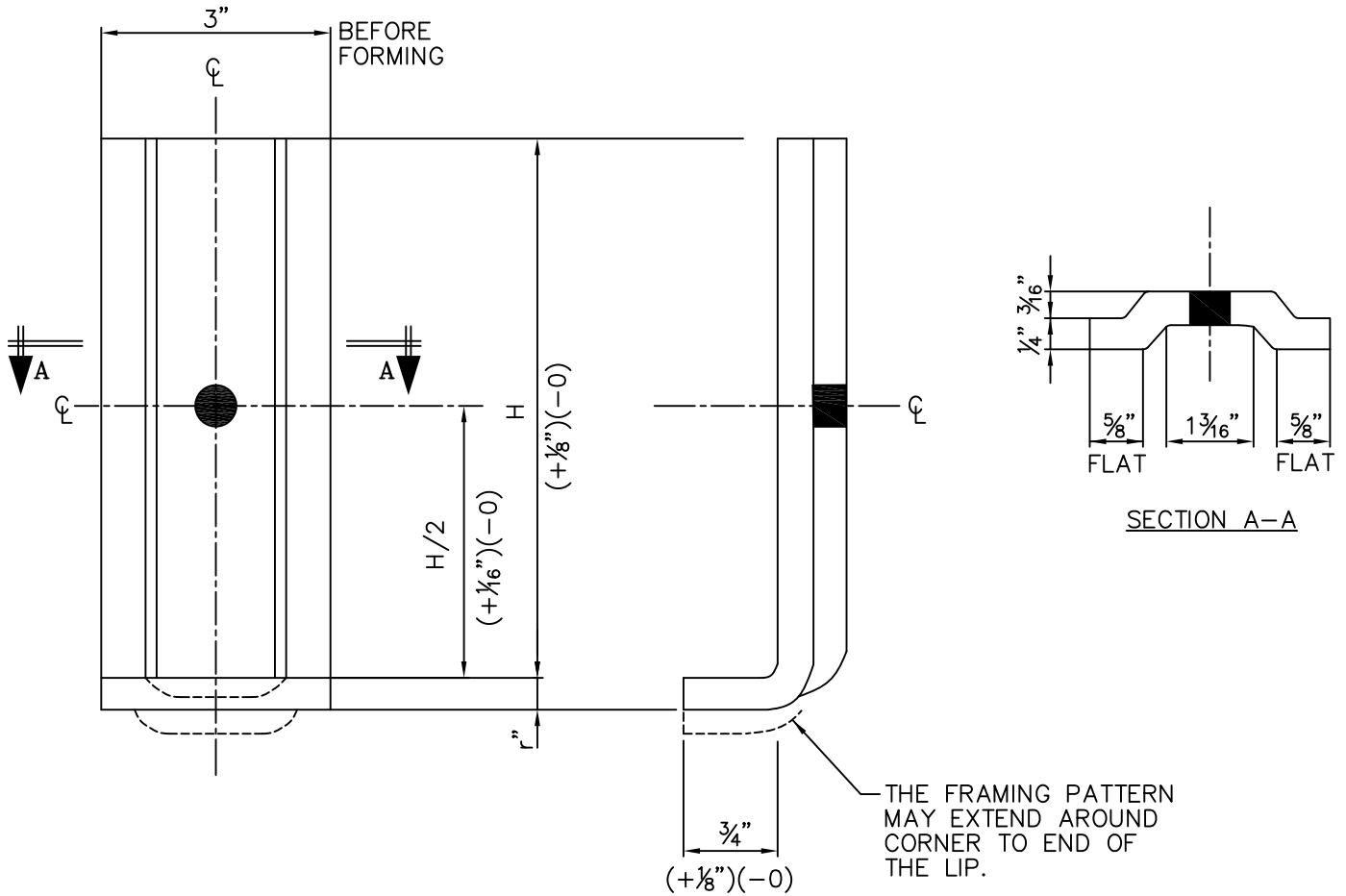
CODE	SIZE
X	1 3/16"
Y	1 5/16"



NOTES

1. MATERIAL PER ASTM-A36.
2. BEND ON 1/8" RADIUS.
3. HOT DIP GALVANIZED ASTM A-123.

EXPLANATION OF STOCK NUMBERS			
ARM DEPTH	HOLE SIZES		
	13/16"	15/16"	1"
5 3/4"	6001.13.6	6001.15.6	6001.18.6
7 1/2"	6001.13.8	6001.15.8	6001.18.8
9"	6001.13.9	6001.15.9	6001.18.9
9 1/2"	6001.13.10	6001.15.10	6001.18.10
11 1/2"	6001.13.12	6001.15.12	6001.18.12

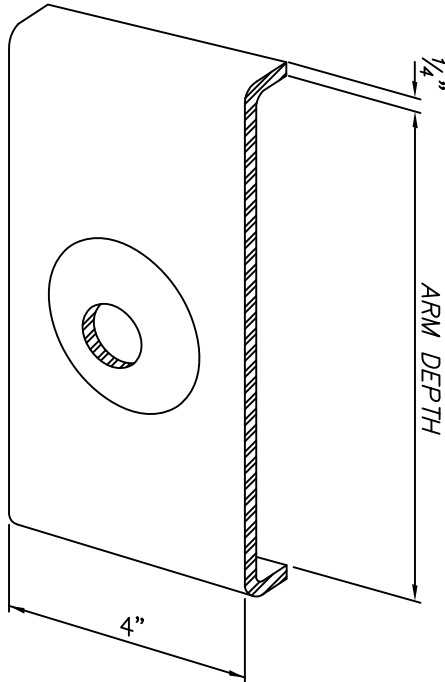


NOTES

1. MATERIAL PER ASTM-36.
2. BEND ON 1/8" RADIUS.
3. HOT DIP GALVANIZED ASTM A-123.

EXPLANATION OF STOCK NUMBERS			
ARM DEPTH	HOLE SIZES		
	1 3/16"	1 5/16"	1 7/8"
5 3/4"	6002.13.6	6002.15.6	6002.18.6
7 1/2"	6002.13.8	6002.15.8	6002.18.8
9"	6002.13.9	6002.15.9	6002.18.9
9 1/2"	6002.13.10	6002.15.10	6002.18.10
11 1/2"	6002.13.12	6002.15.12	6002.18.12

6010 EMBOSSED TIE PLATE

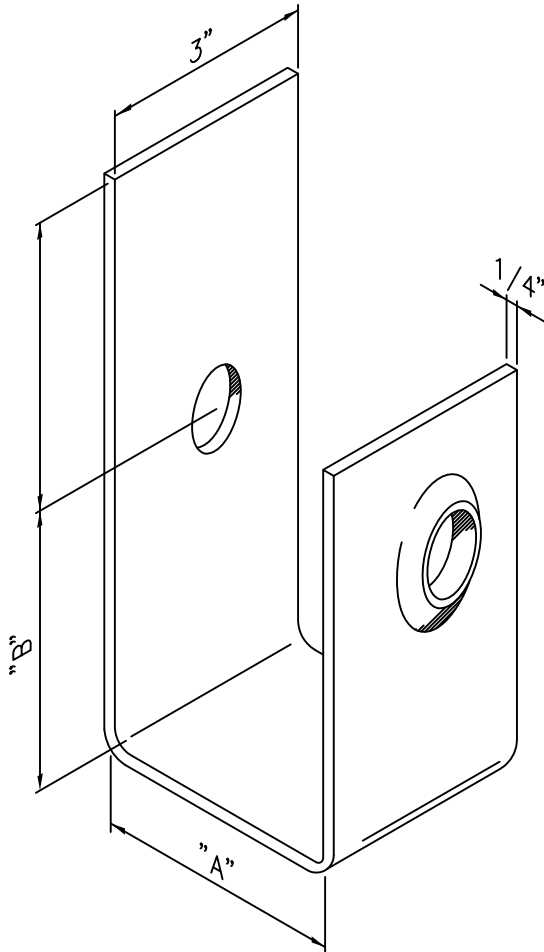


The 6010 Embossed Tie Plate is similar in function to the 6002 Ribbed Tie Plate. The 6010 Embossed Tie Plate maintains the integrity of the mounting bolt connection at the crossarm.

All 6010 Embossed Tie Plates are hot dip galvanized per ASTM A-123. The standard packaged quantity is 25.

HOLE SIZE / STOCK NUMBER

ARM DEPTH	$\frac{9}{16}$ "	$\frac{1}{4}$ "	$\frac{13}{16}$ "	$\frac{15}{16}$ "	$\frac{15}{16}$ "	UNIT WT.
4 $\frac{3}{4}$ "	6010.950	6010.1150	6010.1350	6010.1550	————	1.8 lbs
5 $\frac{3}{4}$ "	6010.960	6010.1160	6010.1360	6010.1560	6010.2160	2.1 lbs
7 $\frac{1}{2}$ "	6010.980	6010.1180	6010.1380	6010.1580	6010.2180	2.6 lbs
8 $\frac{1}{2}$ "	6010.990	6010.1190	6010.1390	6010.1590	————	2.9 lbs
9 $\frac{1}{2}$ "	6010.910	6010.1110	6010.1310	6010.1510	————	3.2 lbs
10 $\frac{1}{2}$ "	6010.911	6010.1111	6010.1311	6010.1511	————	3.3 lbs
11 $\frac{1}{2}$ "	6010.912	6010.1112	6010.1312	6010.1512	————	3.7 lbs



6020 POLE GAIN FITTING

DIS-TRAN's 6020 Pole Gain Fittings are mounted around the bottom of the crossarm over the mounting hole to ensure the integrity of the crossarm mounting bolt connections to the pole.

6020 Pole Gain Fittings are formed from $\frac{1}{4}$ " mild steel and are hot dip galvanized per ASTM A-123.

Ordering Example:

6020.1-B

└─ Mounting Hole Size (Table 2)

└─ Assembly Part No. (Table 1)

TABLE 1: PART CODE DESCRIPTION				
STOCK NO.	WOOD SIZE (INCHES)	"A" (INCHES)	"B" (INCHES)	UNIT WEIGHT
6020.1	3 $\frac{3}{4}$ " X 9 $\frac{1}{2}$ "	3 $\frac{3}{4}$ "	4 $\frac{13}{16}$ "	4.3
6020.2	4 $\frac{3}{4}$ " X 5 $\frac{3}{4}$ "	4 $\frac{3}{4}$ "	2 $\frac{15}{16}$ "	3.4
6020.3	3 $\frac{1}{8}$ " X 9"	3 $\frac{1}{8}$ "	4 $\frac{9}{16}$ "	4.1
6020.4	5 $\frac{1}{8}$ " X 7 $\frac{1}{2}$ "	5 $\frac{1}{8}$ "	3 $\frac{13}{16}$ "	4.1
6020.5	6" X 9"	6"	4 $\frac{9}{16}$ "	4.5
6020.6	3 $\frac{5}{8}$ " X 9 $\frac{1}{2}$ "	3 $\frac{5}{8}$ "	4 $\frac{13}{16}$ "	4.3

TABLE 2: HOLE SIZE	
CODE NO.	HOLE SIZE
B	1 $\frac{5}{16}$ " DIA.
C	1 $\frac{1}{16}$ " DIA.

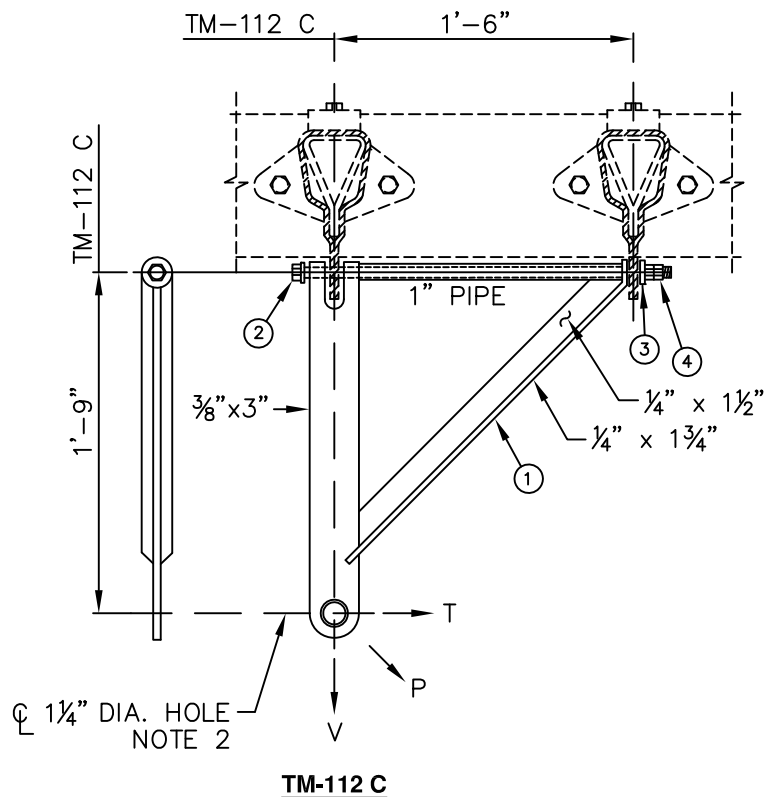
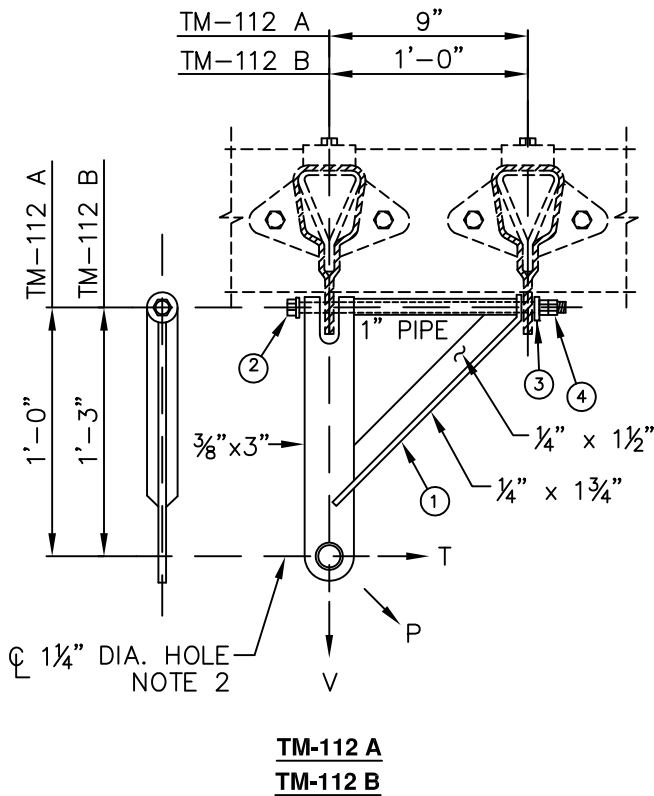


DIS-TRAN
Wood Products, LLC

SWINGING ANGLE BRACKET

SPECIFICATIONS & STRENGTH LOADS

LIST OF MATERIALS				
DRG. REF.	DESCRIPTION	ITEM	DET.	CODE No.
1	BRACKET, WELDED ASSEMBLY			
2	$\frac{3}{4}$ " BOLT, WASHER HEAD			
3	WASHER NUT, OR STD. NUT			
4	$\frac{3}{4}$ " LOCKNUT			



NOTES:

- THE ABOVE BRACKETS ARE USED WITH 5000 SERIES SPACER ASSEMBLIES.
- THE $\frac{1}{4}$ " DIAMETER HOLE SHALL BE REAMED ON BOTH SIDES SUITABLE FOR SELF-LOCKING BALL HOOK.
- LOADS "P" AND "T" ALSO ACT TO THE LEFT.
- STRENGTH LIMITATION OF SWINGING ANGLE BRACKET ASSEMBLY:
 - Maximum vertical load-----V=10,000 lbs.
 - Maximum transverse load-----T=5,000 lbs.
 - Maximum oblique load-----P=12,000 lbs.



DIS-TRAN Wood Products, LLC

DIS-TRAN Wood Products, LLC Contact Sheet

Jennifer Wahlmeier – Estimator/Business Development

Phone: 318-767-5681

Mobile: 318-446-3077

Email: jennifer.wahlmeier@distran.com

Melissa Hines – Estimating/Business Development

Phone: 318-641-4236

Mobile: 318-447-6608

Email: melissa.hines@distran.com

Chris Roshto – Sales Specialist

Phone: 318-427-9313

Mobile: 318-613-7696

Email: chris.roshto@distran.com

Wendy Roberson – Sales Specialist

Phone: 318-767-5658

Mobile: 318-729-1706

Email: wendy.roberson@distran.com

Scott Olsen – Materials Manager

Phone: 360-735-9700 ext. 215

Mobile: 503-720-4815

Email: scott.olsen@distran.com

Jess Courtright – Operations/Sales Manager

Phone: 318-767-5627

Mobile: 318-201-5382

Email: jess.courtright@distran.com

Davie Bryant - Production Supervisor Vancouver Plant

Phone: 360-735-9356

Mobile: 360-901-7477

Email: davie.bryant@distran.com

Accounts Receivable Remittance Address

DIS-TRAN Wood Products, LLC

P.O. Box 5109

Alexandria, LA 71307-5109

Please send all Requests for Quotes and Purchase Orders to dtwood@distran.com.

Pineville, LA Plant
529 Cenla Drive • Pineville, LA 71360
Phone: (318) 640-6892 • Fax: (318) 640-8770

Vancouver, WA Plant
1810 W. 39th Street • Vancouver, WA 98660
Phone: (360) 735-9356 • Fax: (360) 597-0038