

# MéCour Temperature Control - Precise Solutions for Your Sample Handling Needs

All MéCour thermal blocks incorporate a patented thermal technology with the significant advantages over conventional heating or cooling systems:

- Temperature range from -120°C to +250°C
- Temperature precision to within  $\pm 0.1^\circ\text{C}$
- Units sealed to eliminate hazards and coolant contamination
- Heating or cooling within the same thermal block
- Designs compatible with existing lab equipment (chillers/heaters, stir plates, and modular shakers)
- Standard components are fully integrateable with a wide range of LC and automation systems Including Agilent, Waters, Tomtec, Perkin Elmer, (CTC) LEAP, GERSTEL and Eksigent
- User defined solutions available for retrofitting to standard and nonstandard applications

MéCour will work with you to provide stable sample and component temperature control to meet or exceed your needs.

MéCour produces a wide range of standard format and design specific cooling or heating thermal systems for applications dedicated to sample handling, LC/MS systems and automation processes.

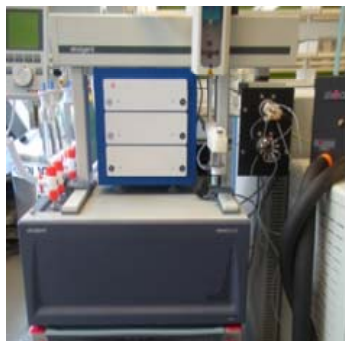
MéCour's patented heating and cooling solutions maintain consistent temperatures for your sample storage, handling and equipment needs. MéCour's process flexibility offers application specific designs and standardized off the shelf formats. Our solutions can be used as stand-alone units or be integrated into virtually any sample handling and automation platform. We can accommodate most consumables, cryovials and tubes. We also offer specialized component units for accurate control of injection valves, columns, plates and trays. For more information, contact us or visit our website.



Standard autosampler platform



Same platform integrated with MéCour temperature control solutions for sample storage, valve and column temperature control



All MéCour thermal units are connected to circulating baths for total uniform and stable temperature.



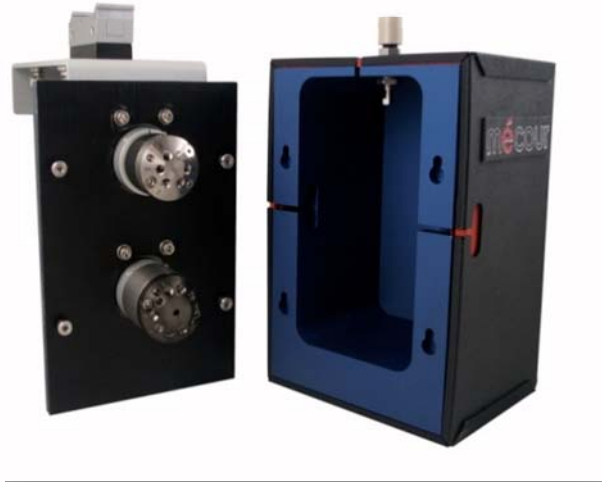
MéCour thermal hotel for cryovials & tubes



MéCour thermal hotel for sample plates

# MéCour Temperature Control - Precise Solutions for Your Components

Syringe unit for extended sample stability

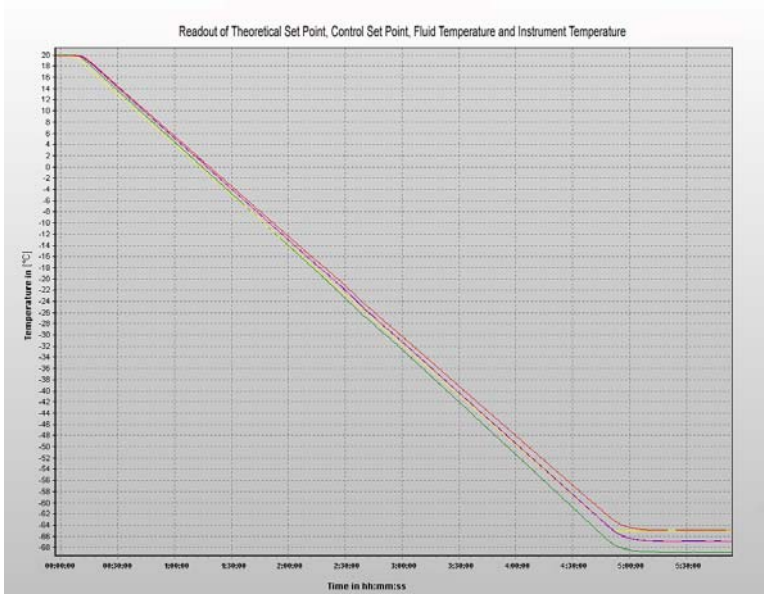


MéCour's valve & column chambers allow precise temperature control of your LC components.

We offer superior temperature stability within a compact and cost effective platform.



MéCour can accommodate your multi-valve and specific application requirements.



Our patented fluid control systems offer unparalleled control over a wide range of temperatures.

This chart demonstrates the close relationship between set point, unit readout and control fluid temperature.

Gain full control over sample and component temperatures with standard or user defined systems from MéCour.