

Innovators from across the nation are using **DARTFISH CUTTING EDGE DIGITAL VIDEO TECHNOLOGY**, including 400 Olympic medalists worldwide at the London Summer Games!



**WHY INTEGRATE DARTFISH VIDEO ANALYSIS SOLUTIONS INTO YOUR SPORT AND EXERCISE PROGRAM?**



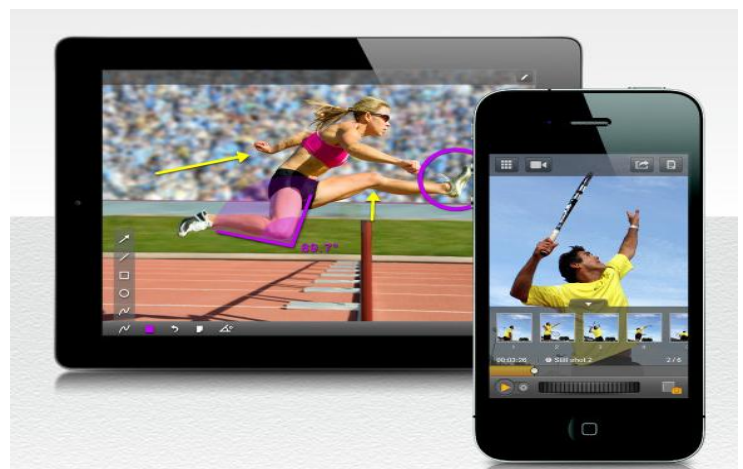
We provide an affordable, scalable, and total solution for your program with prices starting below \$1K.

100's of other universities use Dartfish for an authentic visual learning experience, making difficult concepts understandable (Texas A&M, U. of AZ, Ball State, U. of WI, U. of Sioux Falls, etc.)

Check out multiple areas of use at SUNY Cortland, by clicking on this link: [Dartfish Technology is Incorporated into Multiple Programs at SUNY Cortland - Kinesiology, AT, Sport Management, PE, Athletics, Research.](#)

You can analyze movement, capture data and track skill development with drawing tools, measure distance, time, and angles, etc. for your classroom, clinic, and research projects.

**Outline your program's needs** and we'll develop a customized solution for you with our Dartfish Cloud, including the following tools : video analysis software, apps, your own Dartfish TV channel, a video embedded biomechanics e-text teamed with our software. Check out our new app, **DARTFISH EXPRESS** by clicking here.



**TO JOIN THE SES LEARNING ELITE WITH AFFORDABLE VIDEO INNOVATION** please call 1.888.655.3850 or contact us at [info@dartfish.com](mailto:info@dartfish.com).