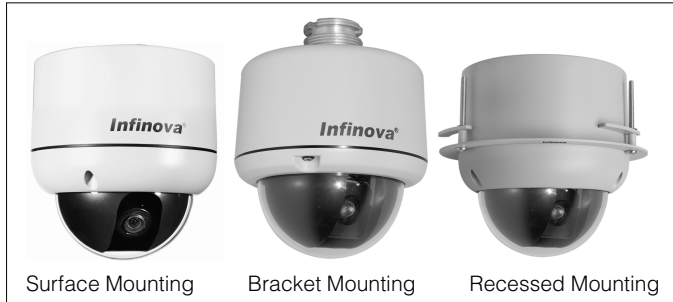


# Indoor, Vandal Resistant, Compact, Light Weight 10X Mini PTZ Dome with 360° Rotation



## DESCRIPTION

Infinova's V1731A series indoor vandal resistant 10X mini PTZ dome is compact and light weight with an inner step motor, slip ring, rotation bearing, timing PCB board and transmission gear. The V1731 series 10X mini PTZ dome features continuous 360° rotation, with super sensitivity, auto focus, auto iris, and backlight compensation. These cameras provide quality images under any lighting conditions. The OSD menu allows for the ease of installation and maintenance.

## FEATURES

- Internal SONY CCD, for clear imaging and natural color
- 10X12 zoom available
- High-precision drive motor for smooth and quick movement
- 360° continuous pan travel, auto flip vertically
- No surveillance blind area
- Dome address setting via software or DIP switch
- Preset speed at 350°/s for real-time, prompt surveillance
- Ease of installation
- 254 presets
- 4 patterns
- 4 autopans
- 6 tours
- Auto flip, autoscan and home position
- Motion detection function associated with relay alarm
- 2 alarm inputs
- 1 relay output
- Presets can be associated with alarm via signals
- Power failure protection for preset parameters
- Zoom selected area (supported by management software)
- Support remote update
- Surge and lightning protection
- 2 privacy masking modes, 16 video blanking sectors and 24 spherical privacy zones
- Motor speed adjustable
- Compass coordinate
- IP66 protection rating (nor for recessed mount domes)
- Bracket, recessed and surface mount

## ORDERING INFORMATION

V1731A-C0C3B5 PTZ Camera, 10X, NTSC, Bracket, Clear, 12VDC  
 V1731A-C0S3B5 PTZ Camera, 10X, NTSC, Bracket, Smoke, 12VDC  
 V1731A-C0C3S5 PTZ Camera, 10X, NTSC, Surface, Clear, 12VDC  
 V1731A-C0S3S5 PTZ Camera, 10X, NTSC, Surface, Smoke, 12VDC  
 V1731A-C0C3C5 PTZ Camera, 10X, NTSC, Recessed, Clear, 12VDC  
 V1731A-C0S3C5 PTZ Camera, 10X, NTSC, Recessed, Smoke, 12VDC  
 V1731A-C1C3B5 PTZ Camera, 10X, PAL, Bracket, Clear, 12VDC  
 V1731A-C1S3B5 PTZ Camera, 10X, PAL, Bracket, Smoke, 12VDC  
 V1731A-C1C3S5 PTZ Camera, 10X, PAL, Surface, Clear, 12VDC  
 V1731A-C1S3S5 PTZ Camera, 10X, PAL, Surface, Smoke, 12VDC  
 V1731A-C1C3C5 PTZ Camera, 10X, PAL, Recessed, Clear, 12VDC  
 V1731A-C1S3C5 PTZ Camera, 10X, PAL, Recessed, Smoke, 12VDC

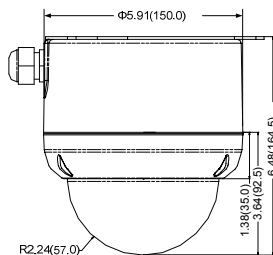
**Note:** For 24VDC/24VAC power input, replace the last number "5" with "3".

## Optional Bracket Models

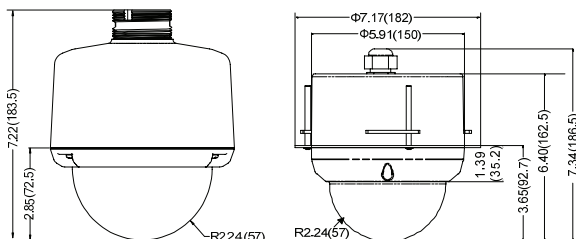
V1761MS: Wall mount, 6" horizontal  
 V1762MS: Corner mount, 6" horizontal  
 V1763MS: Pole side, 6" horizontal  
 V1764: Indoor pendant, 15" long vertical

For detailed information, refer to V1760 series indoor/outdoor dome mounts.

## DIMENSION (Unit: inch, in the parentheses is mm)



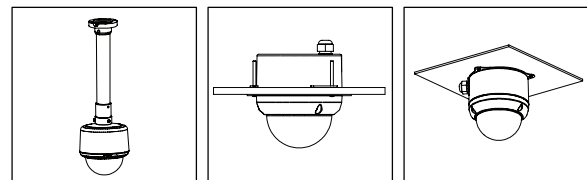
Surface



Bracket

Recessed

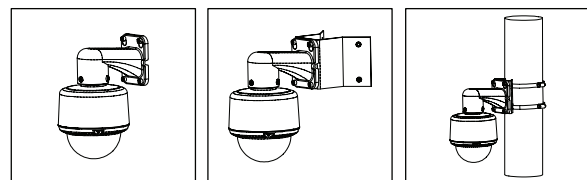
## MOUNTING



Pendant Mount

Recessed Mount

Surface Mount



Wall Mount

Corner Mount

Pole Mount

**SPECIFICATIONS**

**General**

Optical zoom: 10X  
Digital zoom: 12X

**Operation**

Programmable Presets: 254  
Programmable Patterns: 4  
Programmable Autopans: 4  
Programmable Areas: 16  
Privacy Mask Modes: 2  
Tours: 6  
Alarm Inputs: 2  
Relay Output: 1  
Motion Detection Function: Yes  
Home Position: Yes  
Autoscan: Yes  
Image Mirror: Yes  
Menu Language: English  
Protocols: INFINOVA, PELCO-P/D self-adaptable  
Address Setting: software or DIP switch  
Number of Address: 1~254  
Baud Rate: 2400 / 4800 / 9600 bps selectable

**Synchronization**

Internal: Built-in sync generator

**Mechanical**

Manual Speed: 1° ~ 200° per second  
Maximum Preset Speed: 350° per second  
Pan Travel: 360° continuous  
Tilt Travel: 0° ~ 90°  
Preset Accuracy: ±0.3°

Motor: Stepping motor  
Dimension (H×Φ):  
Bracket: 7.22"×Φ5.91" (183.5 mm×Φ 150 mm)  
Ceiling: 6.40"×Φ 7.17" (162.5 mm×Φ 182 mm)  
Surface: 6.48"×Φ 5.91" (164.5 mm×Φ 150 mm)  
Box (L×W×H): 8.66"×8.66"×11.22" (220 mm×220 mm×285 mm)  
Net Weight:  
Bracket: 3.46lbs(1.57 kg)  
Recessed: 3.86lbs(1.75 kg)  
Surface: 4.23lbs(1.92 kg)  
Gross Weight:  
Bracket: 4.63lbs (2.1 kg)  
Recessed: 5.07lbs(2.3 kg)  
Surface: 5.51lbs(2.5 kg)

**Electrical**

Input Voltage: 24 VAC / 24 VDC self- adaptable or 12 VDC  
Power Consumption: 12 VDC: 8 W (w/fan)  
24 VDC: 12 W (w/fan)  
24 VAC: 15 W (w/fan)  
Power Surge Protection: Yes

**Environmental**

Operating Temperature: 14°F ~104°F (-10°C ~+40°C)  
Operating Humidity: 0~90% RH (non-condensing)

**Certifications**

ISO 9001:2000 FCC, CE

**Protocols Supported:**

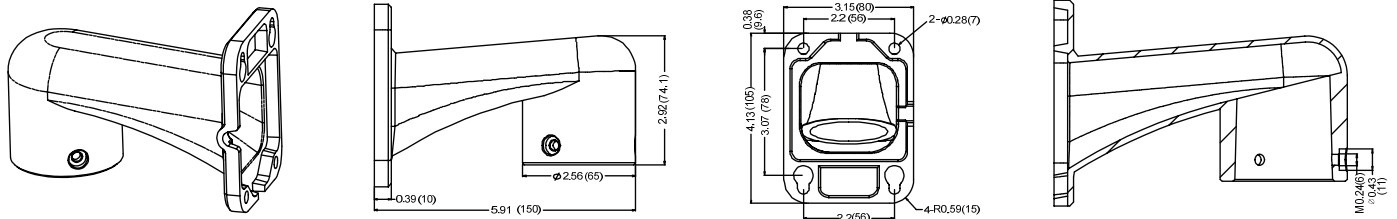
INFINOVA, PELCO-P/D

**CAMERA PARAMETERS**

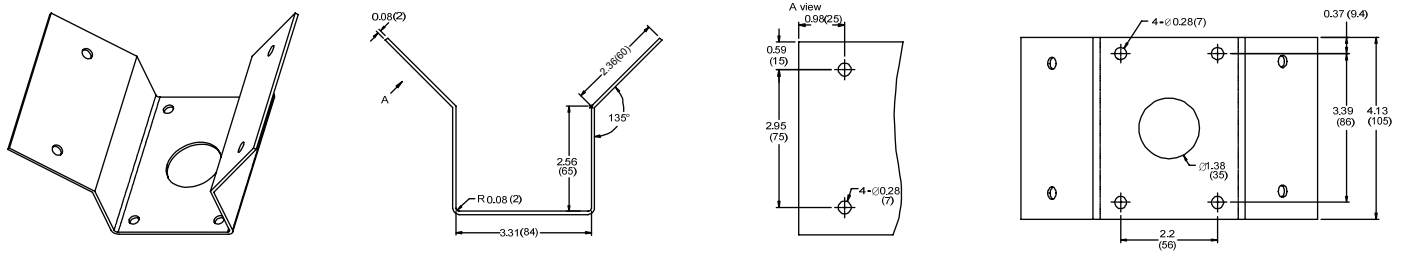
Function		
CCD	Image Sensor	SONY 1/4-type EXview HAD CCD
	Resolution	PAL/440K: 752 x582; NTSC/380K:768 x 494
Optic Feature	Optic Zoom	10X optical zoom, f=4.2 mm (Wide) to 42.0 mm (Tele), F1.8 to F2.9
	Focal Range	0.2m (Wide) ~1m (Tele)
	Digital Zoom	12X
	Angle of View	46.0° (Wide end) to 4.6° (Tele end)
Function	Horizontal	530 TVL
	S/N Ratio	50 dB
	Sensitivity	1.0 lux (typical) (F1.8, NTSC: 1/60s, PAL: 1/50s)
	AGC	Manual / Auto
	White Balance	AUTO, MANU, ATW, INDOOR, OUTDOOR
	BLC	ON/OFF
	Shutter Speed	NTSC: 1/4~1/10,000s; PAL: 1/3~1/10,000s.
	DSS	ON/OFF
	External Control	VISCA (TTL signal level)
	Focus	Auto, Manual, M/A
	Mirror	ON/OFF
Sync System	Internal Sync	

**MOUNTS & ADAPTERS DIMENSIONS (Unit: inch, in the parentheses is mm)**

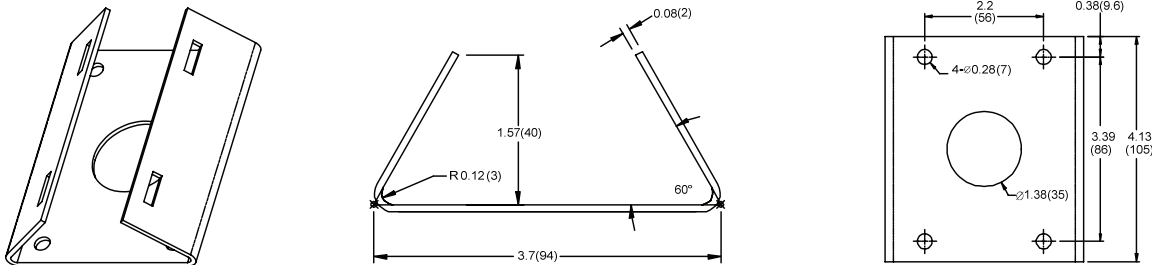
**Bracket:**



**Corner Mount Adapter:**



**Pole Mount Adapter:**



**Pendant Mount Bracket:**

