

# CPI FIBER MANAGEMENT For TeraFrame™ Family of Cabinets

## KEY FEATURES

- CPI Fiber Management utilizes the 0 RMU space between the cabinet frame and side panel in the N-Series TeraFrame™ Network Cabinet and F-Series TeraFrame™ Cabinet
- Supports Corning Cable Systems Plug & Play™ Universal Systems; a pre-terminated optical fiber cabling system that is easy to install and provides a scalable solution for future moves, adds and changes
- CPI Fiber Management provides superior slack management, especially the ability to secure and maintain proper bend radius for Plug & Play Universal Systems trunk cables
- The Universal Accessory Rail supports unique high-density MTP® adapter panels that align fiber connections in the 0 RMU space with RMU spaces on the cabinet's mounting rails so connections on high-density Cisco and Brocade SAN directors are easier to trace
- The Swivel Cable Spools organize customized MTP-to-LC cable harness assemblies which reduce the bulk cabling inside the cabinet and the cable congestion in the director backplane

## APPLICATIONS

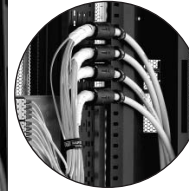
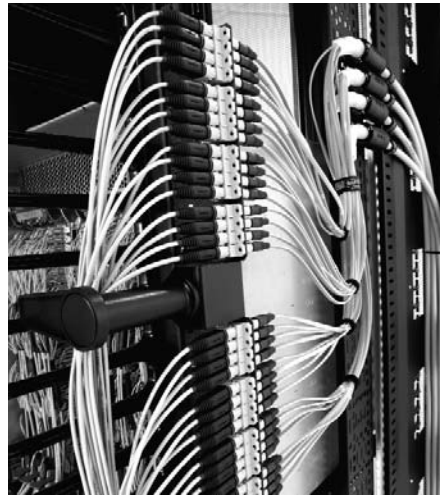
- Organize fiber cables to support Fibre Channel connections for Storage Area Networks (SANs) in N-Series TeraFrame Network Cabinets and F-Series TeraFrame Cabinets

## USE WITH

- N-Series TeraFrame™ Network Cabinet
- F-Series TeraFrame™ Cabinet
- Plug & Play™ Universal Systems, part of Corning Cable Systems LANscape® Pretium™ Solutions

## RELATED ACCESSORIES

- Saf-T-Grip® Cable Management Straps
- Jumper Trays



### CPI Fiber Management

Fiber Trunk Cable Manager and Vertical Furcation Bracket secure Plug & Play Universal Systems trunk cables as the cables enter the cabinet.



### Swivel Cable Spools

Swivel Cable Spools manage fiber jumpers and harnesses.

CPI Fiber Management for the TeraFrame™ Family of Cabinets is designed to manage Corning Cable Systems LANscape® Pretium™ Solutions Plug & Play™ Universal System products to support Fibre Channel connectivity in Storage Area Networks (SANs).

One of the fundamental challenges for SANs is the large volume of optical fiber cable and patch cords that must be managed in cabinets that store large modular (core) switches. When individual jumper cables are used to make each port connection, densities of several hundred cables concentrate along the sides of the cabinets blocking airflow and making it difficult to administer moves, adds and changes. CPI and Corning Cable Systems have partnered to solve this problem with a solution that maximizes available cabinet rack space.

Part of its LANscape® Pretium™ Solution, Corning Cable Systems Plug & Play Universal Systems include pre-terminated optical fiber trunk cables, modules and harness assemblies that greatly reduce the amount of space occupied by the cabling infrastructure within a cabinet. The factory-terminated trunk cables provide TIA-942 compliant connectivity to cabinets containing switches and cabinets housing servers and storage devices via cross-connections in the data center's Main Distribution Area (MDA). Each end of the high fiber count trunk cable is furcated into multiple 12-fiber legs, factory-terminated with MTP® connectors. In lower density applications for servers and data storage equipment, the MTP trunks attach to Plug & Play Universal Systems CCH modules. In high-density applications with Brocade 48000 and Cisco MDS 9513 SAN Directors, Corning Cable Systems offers customized, space-saving harness assemblies that are factory-terminated with an MTP connector on one end and six LC duplex connectors on the other end. The harness assemblies mate to trunk cables via high-density MTP adapter panels mounted in CPI's N-Series TeraFrame™ Cabinet using the CPI Fiber Management System. The harnesses require less physical space inside the cabinet than individual fiber optic patch cords making it easier to trace and manage connections.

The CPI Fiber Management System is comprised of five main support components: the Fiber Trunk Cable Manager, Vertical Furcation Bracket, Horizontal Furcation Bracket, Universal Accessory Rail and Fiber Module Bracket, as well as two accessories for the Universal Accessory Rail: the Fiber Module Adapter and the Swivel Cable Spool. The system supports and provides for attachment and strain-relief of the Plug & Play Universal Systems trunk cables, as well as mounting of Plug & Play Universal Systems Modules and/or high-density MTP adapter panels in the 0 RMU space between the cabinet frame and side panel. The CPI Fiber Management System will work in the N-Series TeraFrame Network Cabinet and the F-Series TeraFrame™ Cabinet. The N-Series TeraFrame Network Cabinet is designed to support high-density cabling and thermal management for modular switches, such as the Cisco 9500 series SAN Director and Brocade 48000 SAN Director. Use the Fiber Trunk Cable Manager, Vertical Furcation Bracket, Horizontal Furcation Bracket, Universal Accessory Rail, Fiber Module Adapter and/or Swivel Cable Spool to manage fiber in the N-Series TeraFrame Network Cabinet. The F-Series TeraFrame Cabinet is designed to support server and data storage equipment. Use the Fiber Module Bracket, Vertical Furcation Bracket and/or Horizontal Furcation Bracket to manage fiber in the F-Series TeraFrame Cabinet.

See inside for product details. A detailed applications guide is available on the CPI Website ([www.chatsworth.com/fibersolutions](http://www.chatsworth.com/fibersolutions)). Contact CPI Technical Support or visit the CPI Website ([www.chatsworth.com/configurator](http://www.chatsworth.com/configurator)) for configuration assistance.

ORDERING INFORMATION

Patent Pending

**Fiber Trunk Cable Manager**

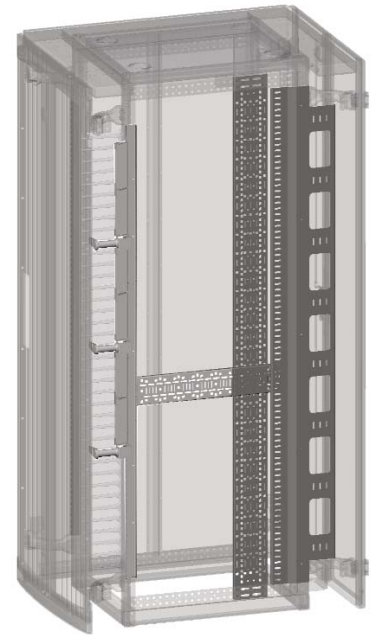
The Fiber Trunk Cable Manager attaches to the side of the N-Series TeraFrame Network Cabinet and supports Corning Cable Systems Plug & Play Universal Systems trunk cables.

- Supports Plug & Play Universal Systems trunk cables as the cables transition from vertical to horizontal orientation to make connections inside the cabinet
- Attaches to the rear frame upright on the N-Series TeraFrame Network Cabinet; it is used in combination with the Vertical Furcation Bracket
- Provides critical strain relief so that the furcation plug on the trunk cable can mount properly to the Vertical Furcation Bracket
- Sized to support connections for two fully populated Cisco 9513 series or Brocade 48000 SAN Directors
- C-shaped, 9.7" wide x 0.5" deep (246 mm x 12.7 mm), made from steel, and includes installation hardware



Part Number	Description	Shipping Weight
34719-C02	For 42 RMU Cabinets, 69.6"H (1768 mm)	16 lb (7.3 kg)
34719-C03	For 43 RMU Cabinets, 71.4"H (1814 mm)	16 lb (7.3 kg)
34719-C04	For 44 RMU Cabinets, 73.1"H (1857 mm)	17 lb (7.7 kg)
34719-C05	For 45 RMU Cabinets, 74.9"H (1902 mm)	16 lb (7.3 kg)
34719-C06	For 46 RMU Cabinets, 76.6"H (1946 mm)	17 lb (7.7 kg)
34719-C07	For 47 RMU Cabinets, 78.4"H (1991 mm)	17 lb (7.7 kg)
34719-C08	For 48 RMU Cabinets, 80.1"H (2035 mm)	17 lb (7.7 kg)
34719-C09	For 49 RMU Cabinets, 81.9"H (2080 mm)	18 lb (8.2 kg)
34719-C10	For 50 RMU Cabinets, 83.6"H (2123 mm)	18 lb (8.2 kg)
34719-C11	For 51 RMU Cabinets, 85.4"H (2169 mm)	19 lb (8.6 kg)

Color is black. Use in CPI N-Series TeraFrame Network Cabinets only; cannot be used in a CPI F-Series TeraFrame Cabinet. Cannot be installed on the left side of a CPI N-Series TeraFrame Network Cabinet that has a Network Switch Exhaust Duct installed. Cannot be used with a Horizontal Furcation Bracket.



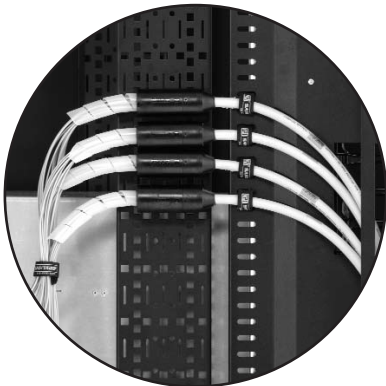
CPI Fiber Trunk Cable Manager and Vertical Furcation Bracket within a N-Series TeraFrame™ Network Cabinet

Patent Pending

**Vertical Furcation Bracket**

The Vertical Furcation Bracket attaches to the side of the N-Series TeraFrame Network Cabinet or the F-Series TeraFrame Cabinet and supports Corning Cable Systems Plug & Play Universal Systems trunk cables.

- Provides attachment points for the trunk cable furcation plug and tie points for securing the trunk cable to the bracket
- Attaches at any location front-to-rear along the side of the cabinet
- Is C-shaped, 5.1" wide x .7" deep (130 mm x 17 mm), made from steel and includes installation hardware



CPI Fiber Trunk Cable Manager and Vertical Furcation Bracket manage Corning Cabling Systems Plug & Play™ Universal System within a N-Series TeraFrame™ Network Cabinet



Part Number	Description	Shipping Weight
34707-C00	For 24 RMU Cabinets, 42.1"H (1070 mm)	8 lb (3.6 kg)
34707-C01	For 36 RMU Cabinets, 63.1"H (1603 mm)	10 lb (4.5 kg)
34707-C02	For 42 RMU Cabinets, 73.1"H (1857 mm)	11 lb (5.0 kg)
34707-C03	For 43 RMU Cabinets, 75.4"H (1915 mm)	11 lb (5.0 kg)
34707-C04	For 44 RMU Cabinets, 77.1"H (1959 mm)	12 lb (5.4 kg)
34707-C05	For 45 RMU Cabinets, 78.9"H (2003 mm)	12 lb (5.4 kg)
34707-C06	For 46 RMU Cabinets, 80.6"H (2048 mm)	13 lb (5.9 kg)
34707-C07	For 47 RMU Cabinets, 82.4"H (2092 mm)	13 lb (5.9 kg)
34707-C08	For 48 RMU Cabinets, 84.1"H (2137 mm)	13 lb (5.9 kg)
34707-C09	For 49 RMU Cabinets, 85.9"H (2181 mm)	14 lb (6.5 kg)
34707-C10	For 50 RMU Cabinets, 87.6"H (2226 mm)	14 lb (6.4 kg)
34707-C11	For 51 RMU Cabinets, 89.4"H (2270 mm)	14 lb (6.4 kg)

Color is Black. Use in N-Series TeraFrame Network Cabinets or F-Series TeraFrame Cabinets. Cannot be installed on the left side of a CPI N-Series TeraFrame Network Cabinet that has a Network Switch Exhaust Duct installed. Requires a 5.2" (132 mm) setback when attached inside the rack-mount space behind equipment mounting rails. Can be used with a Horizontal Furcation Bracket.

ORDERING INFORMATION

Patent Pending



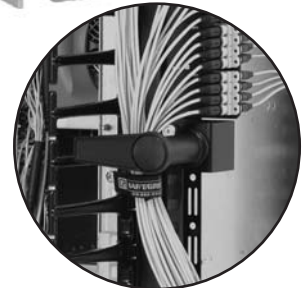
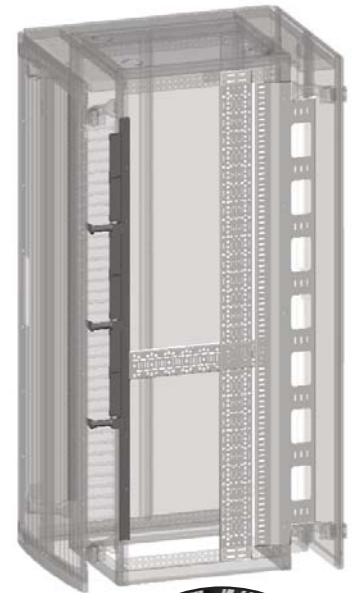
**Universal Accessory Rail**

The Universal Accessory Rail attaches to the vertical frame upright of the N-Series TeraFrame Network Cabinet and supports Corning Cable Systems high-density MTP adapter panels, Fiber Module Adapters and Swivel Cable Spools in the Zero RMU space between the cabinet frame and the cabinet side panel.

- Provides attachment points that align with RMU on the cabinet for any combination of Swivel Cable Spools, Fiber Module Adapters and Corning Cable Systems 3 RMU or 4 RMU high-density MTP adapter panels
- Attaches to the side of the cabinet frame at the front of the cabinet; it is used in combination with the Fiber Trunk Cable Manager and Vertical Furcation Bracket in high-density installations
- Is C-shaped, 1.6" wide x .8" deep (41 mm x 19 mm), made from steel and includes installation hardware

Part Number	Description	Shipping Weight
34701-C02	For 42 RMU Cabinets, 63.0"H (1600 mm)	5 lb (2.3 kg)
34701-C03	For 43 RMU Cabinets, 64.8"H (1645 mm)	5 lb (2.3 kg)
34701-C04	For 44 RMU Cabinets, 66.5"H (1689 mm)	5 lb (2.3 kg)
34701-C05	For 45 RMU Cabinets, 68.3"H (1734 mm)	5 lb (2.3 kg)
34701-C06	For 46 RMU Cabinets, 70.0"H (1778 mm)	6 lb (2.7 kg)
34701-C07	For 47 RMU Cabinets, 71.8"H (1822 mm)	6 lb (2.7 kg)
34701-C08	For 48 RMU Cabinets, 73.5"H (1867 mm)	6 lb (2.7 kg)
34701-C09	For 49 RMU Cabinets, 75.3"H (1911 mm)	6 lb (2.7 kg)
34701-C10	For 50 RMU Cabinets, 77.0"H (1956 mm)	6 lb (2.7 kg)
34701-C11	For 51 RMU Cabinets, 78.8"H (2000 mm)	6 lb (2.7 kg)

Color is Black. Use in CPI N-Series TeraFrame Network Cabinets only; cannot be used in a CPI F-Series TeraFrame Cabinet. 6 RMU (3 RMU top/3 RMU bottom) shorter than the cabinets equipment mounting rails. Required to support the Swivel Cable Spool, Fiber Module Adapter and Corning Cable Systems high-density MTP adapter panels.



Close-Up of Universal Accessory Rail and Swivel Cable Spool within a CPI N-Series TeraFrame™ Network Cabinet

Patent Pending



**Swivel Cable Spool**

The Swivel Cable Spool attaches to the Universal Accessory Rail in a N-Series TeraFrame Network Cabinet and helps manage optical fiber harness assemblies as the assemblies transition from connector matings on the Universal Accessory Rail to connections in rack-mount equipment. The spools are recommended next to modular SAN switches, like the Cisco 9500 series and Brocade 48000 Directors, to manage cable slack where large numbers of harness assemblies are installed in a small number of RMU spaces.

- Is 1 RMU high and attaches to the Universal Accessory Rail in the 0 RMU space between the cabinet frame and the cabinet side panel
- Includes an L-shaped mounting bracket and an L-shaped spool; the spool rotates 360° with stops at 90° increments
- Is 4" wide x 1.7" high x 5.5" deep (102 mm x 44 mm x 140 mm) overall and includes installation hardware; the plastic L-shaped spool is 4" wide x 3" deep (102 mm x 80 mm) with a 1" diameter (30 mm); the steel L-shaped standoff mounting bracket is 2.7" wide x 1.7" high x 2" deep (70 mm x 44 mm x 50 mm)
- Sold individually or in kits of six



Part Number	Description	Shipping Weight
34716-C01	Swivel Cable Spool, each	2 lb (0.9 kg)
34716-C02	Swivel Cable Spool, Kit of 6	3 lb (1.4 kg)

Color is Black. Attaches to the Universal Accessory Rail.

**Fiber Module Adapter**

The Fiber Module Adapter mounts to the Universal Accessory Rail in a N-Series TeraFrame Network Cabinet and supports a single Corning Cable Systems Plug & Play Universal Systems CCH Module in the Zero RMU space between the cabinet frame and the cabinet side panel.

- Is 4 RMU high, attaches to the Universal Accessory Rail and supports a single Corning Cable Systems Plug & Play Universal Systems CCH Module
- CCH Modules provide a transition from 12-fiber MTP connectors to simplex or duplex connectors
- Use in the N-Series TeraFrame Network Cabinet for applications with lower cable densities that do not require the Corning Cable Systems 3 RMU or 4 RMU high-density MTP adapter panels and harness assembly connectivity
- Is S-shaped, 2" wide x 7" high x 2.5" deep (50 mm x 178 mm x 64 mm), made from steel and includes installation hardware

Part Number	Description	Shipping Weight
34713-C01	Fiber Module Adapter	2 lb (0.9 kg)

Color is Black. Attaches to the Universal Accessory Rail.

ORDERING INFORMATION

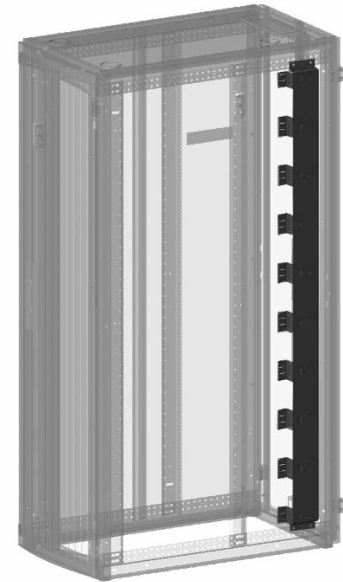
**Fiber Module Bracket**

The Fiber Module Bracket attaches to the side of the F-Series TeraFrame Cabinet and supports Corning Cable Systems Plug & Play Universal Systems CCH Modules and fiber optic patch cords in the 0 RMU space between the cabinet frame and the cabinet side panel.

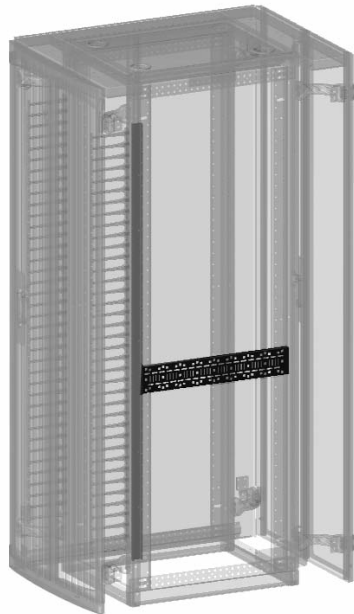
- Provides multiple attachment points for Corning Cable Systems Plug & Play Universal Systems CCH Modules, which convert the 12-fiber MTP connectors on the trunk cables into simplex or duplex connectors for rack-mount storage arrays or servers with low port density requirements
- Attaches to the side of the cabinet frame at the rear of the cabinet; it provides cable management and tie points for trunk cables and jumper cables
- Is S-shaped, 6.2" wide x 1.8" deep (160 mm x 46 mm), made from steel and includes installation hardware

Part Number	Description	Shipping Weight
34718-C00	For 24 RMU Cabinets, 36.5"H (927 mm), Supports 4 Modules	10 lb (4.5 kg)
34718-C01	For 36 RMU Cabinets, 57.5"H (1461 mm), Supports 7 Modules	14 lb (6.4 kg)
34718-C02	For 42 RMU Cabinets, 71.5"H (1816 mm), Supports 8 Modules	16 lb (7.3 kg)
34718-C03	For 43 RMU Cabinets, 73.3"H (1861 mm), Supports 8 Modules	16 lb (7.3 kg)
34718-C04	For 44 RMU Cabinets, 75.0"H (1905 mm), Supports 9 Modules	16 lb (7.3 kg)
34718-C05	For 45 RMU Cabinets, 76.8"H (1950 mm), Supports 9 Modules	16 lb (7.3 kg)
34718-C06	For 46 RMU Cabinets, 78.5"H (1994 mm), Supports 9 Modules	17 lb (7.7 kg)
34718-C07	For 47 RMU Cabinets, 80.3"H (2039 mm), Supports 9 Modules	18 lb (8.2 kg)
34718-C08	For 48 RMU Cabinets, 82.0"H (2083 mm), Supports 10 Modules	18 lb (8.2 kg)
34718-C09	For 49 RMU Cabinets, 83.8"H (2128 mm), Supports 10 Modules	18 lb (8.2 kg)
34718-C10	For 50 RMU Cabinets, 85.5"H (2172 mm), Supports 10 Modules	19 lb (8.6 kg)
34718-C11	For 51 RMU Cabinets, 87.3"H (2216 mm), Supports 10 Modules	19 lb (8.6 kg)

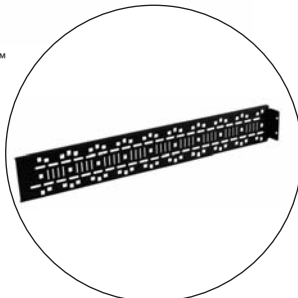
Color is Black. Use in CPI F-Series TeraFrame Cabinets only; cannot be used in a CPI N-Series TeraFrame Network Cabinet. Requires a minimum 9.7" (246 mm) rear rail setback when used with standard Corning Cable Systems Universal Systems CCH Modules to provide access to connections.



Fiber Module Bracket within a F-Series TeraFrame™ Cabinet



Horizontal Furcation Bracket within a N-Series TeraFrame™ Network Cabinet



**Horizontal Furcation Bracket**

The Horizontal Furcation Bracket attaches to the Universal Accessory Rail in the N-Series TeraFrame Network Cabinet or to the side of a TeraFrame Equipment Mounting Rail in the F-Series TeraFrame Cabinet. The Horizontal Furcation Bracket can be used to secure trunk cables in the vertical orientation as the cables enter the cabinet or as a horizontal (front-to-rear) support for the furcation legs of the trunk cable.

- Provides attachment points for the trunk cable furcation plugs and tie points for securing the trunk cable to the bracket
- Attaches at any location top-to-bottom along the side of the cabinet. Multiple brackets can be used in each cabinet
- Is C-shaped, 4.3" wide x .5" deep (108 mm x 12 mm) with 1.5"D (38 mm) mounting flange, made from steel and includes installation hardware

Part Number	Description	Shipping Weight
34708-C02	22.4"L (569 mm), fits maximum rail spacing of 22.4"	5 lb (2.3 kg)
34708-C03	23.3"L (592 mm), fits maximum rail spacing of 23.3"	5 lb (2.3 kg)
34708-C04	24.3"L (617 mm), fits maximum rail spacing of 24.3"	5 lb (2.3 kg)
34708-C05	25.3"L (643 mm), fits maximum rail spacing of 25.3"	5 lb (2.3 kg)
34708-C06	26.3"L (668 mm), fits maximum rail spacing of 26.3"	5 lb (2.3 kg)
34708-C07	27.3"L (693 mm), fits maximum rail spacing of 27.3"	5 lb (2.3 kg)
34708-C08	28.3"L (718 mm), fits maximum rail spacing of 28.3"	5 lb (2.3 kg)
34708-C09	29.3"L (743 mm), fits maximum rail spacing of 29.3"	5 lb (2.3 kg)
34708-C10	30.2"L (768 mm), fits maximum rail spacing of 30.2"	5 lb (2.3 kg)
34708-C11	31.2"L (793 mm), fits maximum rail spacing of 31.2"	5 lb (2.3 kg)
34708-C12	32.2"L (818 mm), fits maximum rail spacing of 32.2"	5 lb (2.3 kg)
34708-C13	33.2"L (843 mm), fits maximum rail spacing of 33.2"	5 lb (2.3 kg)
34708-C14	34.2"L (868 mm), fits maximum rail spacing of 34.2"	5 lb (2.3 kg)
34708-C15	35.2"L (893 mm), fits maximum rail spacing of 35.2"	6 lb (2.7 kg)
34708-C16	36.2"L (918 mm), fits maximum rail spacing of 36.2"	6 lb (2.7 kg)

Color is Black. Use in N-Series TeraFrame Network Cabinets or F-Series TeraFrame Cabinets. Attaches to the Universal Accessory Rail in N-Series TeraFrame Network Cabinet. Attaches to mounting rails in the F-Series TeraFrame Cabinet. Can be used with the Vertical Furcation Bracket; cannot be used with the Fiber Trunk Cable Manager, Vertical Cable Manager or Internal Air Duct.

