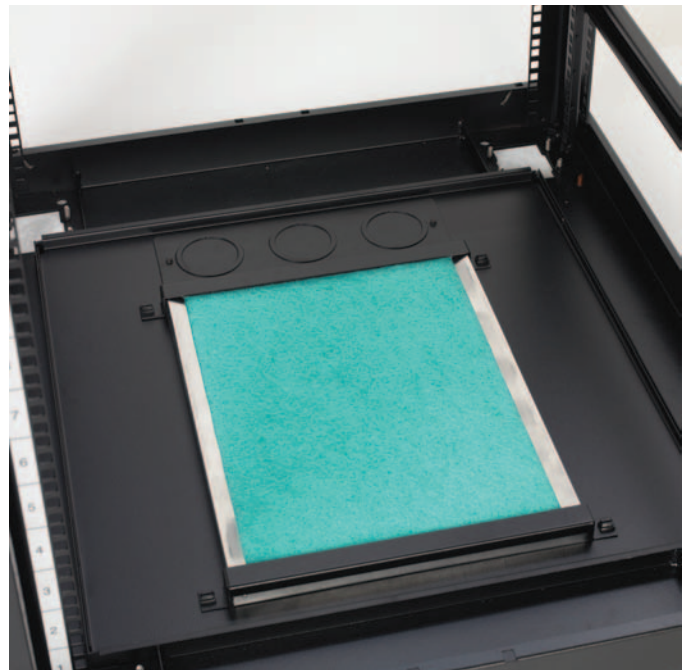




# V-LINE™ Cabinet Systems Next Generation

VLNGCD-10

 **COOPER B-Line**



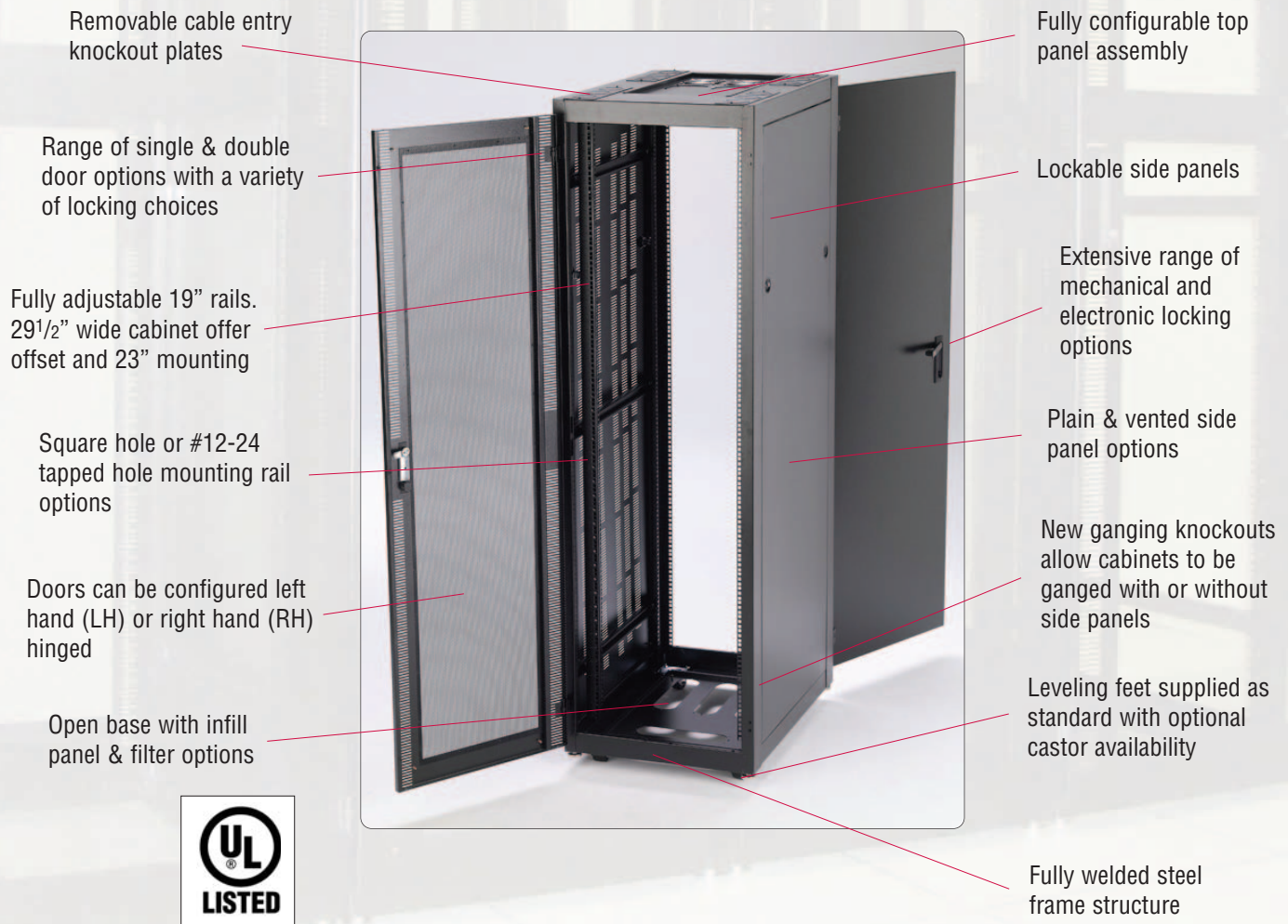


Today's competitive electronic enclosure market requires cost effective products that deliver superior performance and function. Cooper B-Line developed the V-LINE™ cabinet platform to support the growing need for a competitively priced solution.

Many innovative features are designed into the V-LINE cabinet platform, offering valuable benefits for users. The heart of the system, the cabinet frame, has standard features, such as, fully adjustable mounting angles with RMU markings, removable and replaceable cable entry plates, and leveling feet. The frame can be fitted with a range of options including solid or vented side panels, a variety of door styles, and top or bottom panels. The V-LINE cabinet features excellent aesthetic characteristics and is built to the high quality standard our customers have come to expect over the years from Cooper B-Line.

All of these features, good looks and high quality are offered at a competitive price point, making the V-LINE cabinet an excellent choice for anyone needing to house data communications equipment while watching the bottom line.

## The V-LINE™ Cabinet Advantage



Standard cabinet finish is a Black hard wearing epoxy polyester powder coat paint, color reference RAL 9005. Cabinets are also available finished in Light Gray, reference NCS 1502-Y, but may be subject to increased lead times.

## Table of Contents

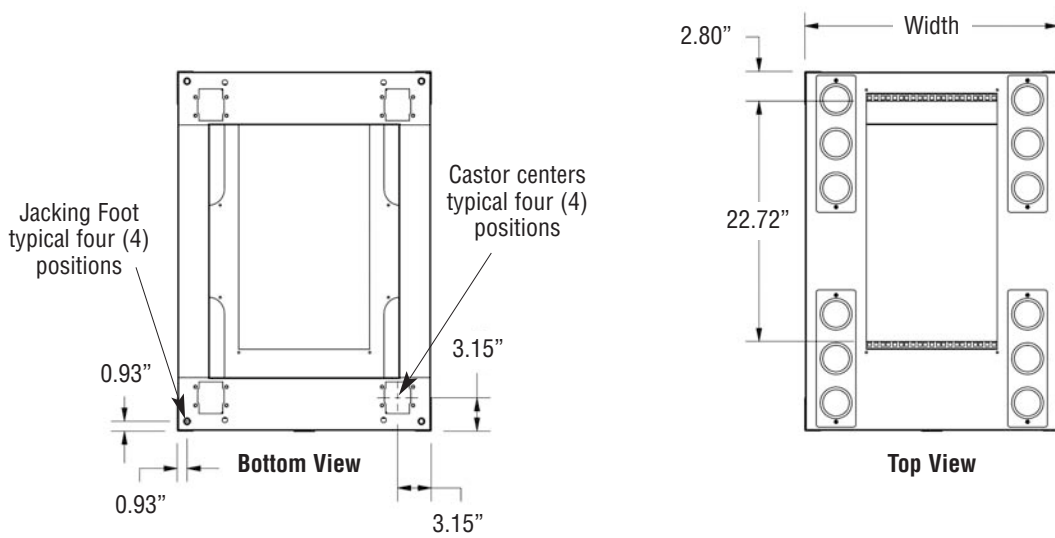
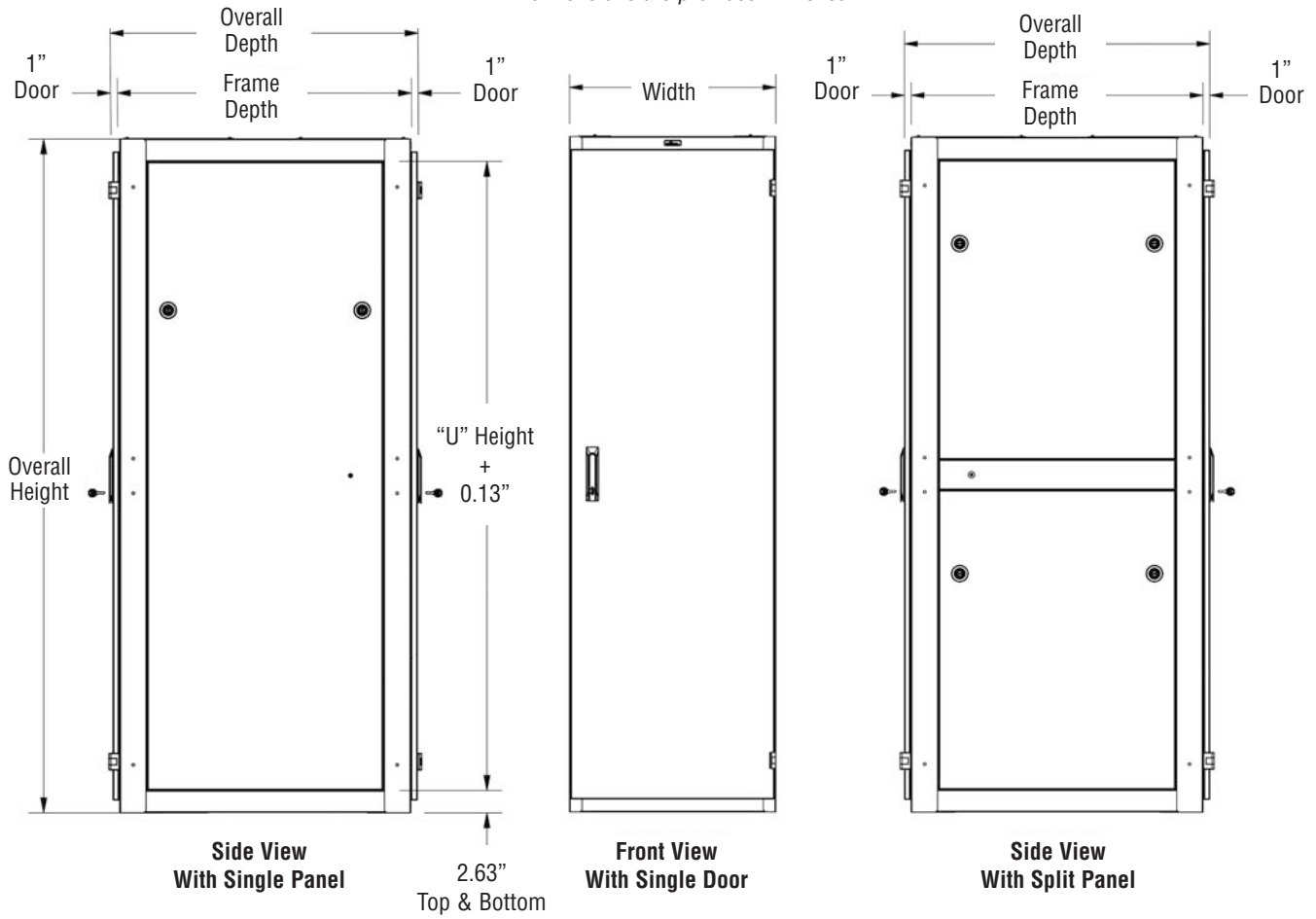
Product Introduction .....	2
Table of Contents .....	3
Cabinet System .....	4
Easy Step Configurator .....	5
<b>V-LINE™ Cabinet Options</b>	
Network Cabinet .....	6
Cabling Cabinet .....	7
Server Cabinet .....	8
Switch Cabinet .....	9
Co-Locate Cabinet .....	10
Co-Locate Easy Step Configurator .....	11
Front & Rear Door Options (Door styles & locking options) .....	12-13
Side Panel Options .....	14
Bottom Panel Options .....	15
Top Panel Options .....	16
<b>V-LINE™ Accessories</b>	
Caster Kits, Seismic Bolt-Down Kit, Cable Entry Knockout Plates .....	17
Brush Strip Cable Plates, Mounting Rail Offset Kits .....	18
Air Dam Kits, Vertical Cable Manager Kits .....	19
Ganging Kits, Earth kits, Screws & Cage Nuts .....	20
Enhanced Vertical Cable Manager Kits, Horizontal Cable Trough Kits .....	21
Horizontal Cable Managers, Twist & Lock Arms and Rings .....	22
PlenaFill Plastic Blanking Panels, Quick Fit Blanking Panels .....	23
Adjustable Side Depth Blanking Panels, Cable Guide Kit, Narrow Cable Hoop Kit .....	24
Cantilever Shelves, Quick Fit Shelves, Fixed Shelves .....	25
Sliding Shelves, Universal Sliding Shelves .....	26
Other Comm/Data Products .....	27



# Cabinet System

## Basic Dimensions

All dimensions are provided in inches.



For overall unit sizes see cabinet configuration tables.

Details subject to change without written notice.



The V-LINE™ cabinet platform is designed to provide high quality enclosure solutions to the market at competitive prices and short lead times. Ordering the V-LINE cabinet solution can be done by ordering individual components or ordering a configured enclosure solution with a single part number.

Use the following matrix to build the part number for your desired V-LINE cabinet configuration.

Step 1	<b>V</b>	<b>V-LINE Cabinet Range</b>	<b>Options</b>				
	<b>42</b>	<b>Cabinet Effective Height</b>	<b>24U</b>	<b>38U</b>	<b>42U</b>	<b>45U</b>	<b>47U</b>
	<b>24</b>	<b>Cabinet Overall Width</b>	<b>24 = 24"</b>		<b>29 = 29 1/2"</b>		
	<b>42</b>	<b>Cabinet Overall Depth</b>	<b>24 = 24"</b>	<b>30 = 30"</b>	<b>36 = 36"</b>	<b>42 = 42"</b>	<b>48 = 48"</b>
Step 2	<b>A</b>	<b>Mounting Rail Type</b>	<b>A = 19" Square Holes</b>		<b>C = 23" Square Holes *</b>		
	<b>C</b>	<b>Mounting Rail Position</b>	<b>B = 19" #12-24 Tapped Holes</b>		<b>D = 23" #12-24 Tapped Holes *</b>		
Step 3	<b>V</b>	<b>Front Door</b>	<b>L = Offset Left*</b>		<b>* Only on 29 1/2" wide cabinets</b>		
	<b>X</b>	<b>Rear Door</b>	<b>R = Offset Right*</b>				
	<b>S</b>	<b>Locking Options</b>	<b>C = Centered</b>				
Step 4	<b>V</b>	<b>Front Door</b>	<b>V = High Flow Vented LH</b>		<b>A = Acrylic LH</b>		
	<b>X</b>	<b>Rear Door</b>	<b>W = High Flow Vented RH</b>		<b>B = Acrylic RH</b>		
Step 5	<b>S</b>	<b>Left Hand (LH) Side Panel Configuration</b>	<b>X = High Flow Vented Split*</b>		<b>C = Vented Acrylic LH</b>		
	<b>S</b>	<b>Right Hand (RH) Side Panel Configuration</b>	<b>S = Solid LH</b>		<b>D = Vented Acrylic RH</b>		
Step 6	<b>T</b>	<b>Locking Options</b>	<b>U = Solid RH</b>		<b>F = Split Fan Door*</b>		
	<b>U</b>	<b>Locking Options</b>	<b>N = None</b>		<b>* Only available with T &amp; D locking options.</b>		
Step 7	<b>S</b>	<b>Left Hand (LH) Side Panel Configuration</b>	<b>S = Swing Handle (single point)</b>		<b>D = Combo Handle (3-point)</b>		
	<b>T</b>	<b>Right Hand (RH) Side Panel Configuration</b>	<b>C = Combo Handle (single point)</b>		<b>P = i-PAL Handle (2-point)</b>		
Step 8	<b>T</b>	<b>Locking Options</b>	<b>T = Swing Handle (3-point)</b>		<b>N = None</b>		
	<b>V</b>	<b>Top Panel Configuration</b>	<b>S = Solid Full Height*</b>		<b>* Not available on 42U x 48", 45U x 48", &amp; 47U x 48" options</b>		
Step 9	<b>V</b>	<b>Top Panel Configuration</b>	<b>T = Solid Split**</b>		<b>** Not available on 24U high options</b>		
	<b>N</b>	<b>Top Panel Configuration</b>	<b>V = Vented Full Height*</b>				
Step 10	<b>W</b>	<b>Top Panel Configuration</b>	<b>W = Vented Split**</b>				
	<b>N</b>	<b>Top Panel Configuration</b>	<b>N = None</b>				
Step 11	<b>S</b>	<b>Top Panel Configuration</b>	<b>S = Solid Top</b>		<b>2 = 210 CFM Fan Top</b>		<b>1 = 1100 CFM Fan Top*</b>
	<b>V</b>	<b>Top Panel Configuration</b>	<b>V = Vented Top</b>		<b>4 = 420 CFM Fan Top</b>		<b>* Not available on 24" wide deep units</b>
Step 12	<b>N</b>	<b>Top Panel Configuration</b>	<b>N = None</b>		<b>5 = 550 CFM Fan Top</b>		
	<b>B</b>	<b>Finish</b>	<b>A = Gray</b>		<b>B = Black</b>		
Step 13	<b>+</b>	<b>Accessories</b>	<b>See Pages 17 - 26</b>				

What features do you require for your electronic cabinet solution? Whatever you require, you can be sure that the V-LINE cabinet platform from Cooper B-Line will meet your needs. For assistance with selecting the optimal cabinet solution for your network, contact a Cooper B-Line sales representative or call our sales engineering department at (800) 851-7415.



# Network Cabinet

Most day to day network installations incorporating low density active equipment, as well as low volume structured cabling systems, can be accommodated into what has evolved to be an industry standard network cabinet.

**V-LINE™ Network Cabinets are comprised of the following features:**

- Welded frame assembly with open base
- Supplied with four (4) off jacking feet
- Supplied with two pair of fully adjustable 19-inch mounting rails centrally mounted in the cabinet
- Acrylic glazed door with vented styles fitted front, supplied with standard locking swing handle (door right hand hinged)
- Plain steel door fitted at the rear and supplied with standard locking swing handle (door right hand hinged)
- Plain side panels fitted both sides
- Vented top panel
- Supplied with pack of fifty (50) #12/24 cage nuts and screws
- Supplied fully assembled and palletized



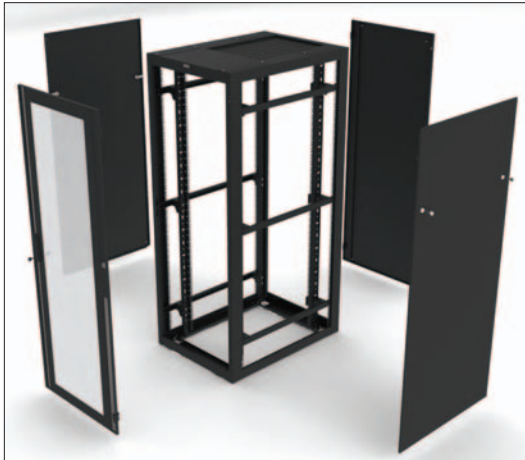
**If the standard specification cabinets shown do not meet your application requirements, use the “Easy Step Configurator” on page 5.**

Accessories and additional options are available as detailed on pages 17 - 26.

	Cooper B-Line Catalog No.	Side Panel Style	Effective U	Overall Cabinet Height		Width		Depth	
				in.	(mm)	In.	(mm)	in.	(mm)
EIA Square Hole Mounting Rails	V422424ACDTSSSVB	Full	42U	78.9	2004	24	610	24	610
	V422430ACDTSSSVB	Full	42U	78.9	2004	24	610	30	762
	V422436ACDTSSSVB	Full	42U	78.9	2004	24	610	36	915
	V422442ACDTSSSVB	Full	42U	78.9	2004	24	610	42	1067
	V422448ACDTSTTVB	Split	42U	78.9	2004	24	610	48	1219
	V452424ACDTSSSVB	Full	45U	84.1	2137	24	610	24	610
	V452430ACDTSSSVB	Full	45U	84.1	2137	24	610	30	762
	V452436ACDTSSSVB	Full	45U	84.1	2137	24	610	36	915
	V452442ACDTSSSVB	Full	45U	84.1	2137	24	610	42	1067
	V452448ACDTSTTVB	Split	45U	84.1	2137	24	610	48	1219
	V472424ACDTSSSVB	Full	47U	87.6	2226	24	610	24	610
	V472430ACDTSSSVB	Full	47U	87.6	2226	24	610	30	762
	V472436ACDTSSSVB	Full	47U	87.6	2226	24	610	36	915
	V472442ACDTSSSVB	Full	47U	87.6	2226	24	610	42	1067
	V472448ACDTSTTVB	Split	47U	87.6	2226	24	610	48	1219
#12-24 Tapped Hole Mounting Rails	V422424BCDTSSSVB	Full	42U	78.9	2004	24	610	24	610
	V422430BCDTSSSVB	Full	42U	78.9	2004	24	610	30	762
	V422436BCDTSSSVB	Full	42U	78.9	2004	24	610	36	915
	V422442BCDTSSSVB	Full	42U	78.9	2004	24	610	42	1067
	V422448BCDTSTTVB	Split	42U	78.9	2004	24	610	48	1219
	V452424BCDTSSSVB	Full	45U	84.1	2137	24	610	24	610
	V452430BCDTSSSVB	Full	45U	84.1	2137	24	610	30	762
	V452436BCDTSSSVB	Full	45U	84.1	2137	24	610	36	915
	V452442BCDTSSSVB	Full	45U	84.1	2137	24	610	42	1067
	V452448BCDTSTTVB	Split	45U	84.1	2137	24	610	48	1219
	V472424BCDTSSSVB	Full	47U	87.6	2226	24	610	24	610
	V472430BCDTSSSVB	Full	47U	87.6	2226	24	610	30	762
	V472436BCDTSSSVB	Full	47U	87.6	2226	24	610	36	915
	V472442BCDTSSSVB	Full	47U	87.6	2226	24	610	42	1067
	V472448BCDTSTTVB	Split	47U	87.6	2226	24	610	48	1219

Details subject to change without written notice.

For applications housing structured cabling systems, it is often necessary to employ wider cabinets to adequately accommodate the back bone cabling, as well as provide space to manage the patch cords.



**V-LINE™ Cabling Cabinets are comprised of the following features:**

- 29 1/2" wide welded frame assembly with open base
- Supplied with four (4) off jacking feet
- Supplied with two pair of fully adjustable 19-inch mounting rails centrally mounted in the cabinet
- Acrylic glazed door with vented styles fitted front and configured with standard locking swing handle (door right hand hinged)
- Plain steel door fitted at the rear and configured with standard locking swing handle (door right hand hinged)
- Plain side panels fitted both sides
- Vented top panel
- Supplied with pack of Fifty (50) #12/24 cage nuts and screws
- Supplied fully assembled and palletized

**If the standard specification cabinets shown do not meet your application requirements, use the “Easy Step Configurator” on page 5.**

Accessories and additional options are available as detailed on pages 17 - 26.

	Cooper B-Line Catalog No.	Side Panel Style	Effective U	Overall Cabinet Height		Width		Depth	
				in.	(mm)	In.	(mm)	in.	(mm)
EIA Square Hole Mounting Rails	V422924ACDTSSSVB	Full	42U	78.9	2004	29.5	750	24	610
	V422930ACDTSSSVB	Full	42U	78.9	2004	29.5	750	30	762
	V422936ACDTSSSVB	Full	42U	78.9	2004	29.5	750	36	915
	V422942ACDTSSSVB	Full	42U	78.9	2004	29.5	750	42	1067
	V422948ACDTSTTVB	Split	42U	78.9	2004	29.5	750	48	1219
	V452924ACDTSSSVB	Full	45U	84.1	2137	29.5	750	24	610
	V452930ACDTSSSVB	Full	45U	84.1	2137	29.5	750	30	762
	V452936ACDTSSSVB	Full	45U	84.1	2137	29.5	750	36	915
	V452942ACDTSSSVB	Full	45U	84.1	2137	29.5	750	42	1067
	V452948ACDTSTTVB	Split	45U	84.1	2137	29.5	750	48	1219
#12-24 Tapped Hole Mounting Rails	V472924ACDTSSSVB	Full	47U	87.6	2226	29.5	750	24	610
	V472930ACDTSSSVB	Full	47U	87.6	2226	29.5	750	30	762
	V472936ACDTSSSVB	Full	47U	87.6	2226	29.5	750	36	915
	V472942ACDTSSSVB	Full	47U	87.6	2226	29.5	750	42	1067
	V472948ACDTSTTVB	Split	47U	87.6	2226	29.5	750	48	1219
	V422924BCDTSSSVB	Full	42U	78.9	2004	29.5	750	24	610
	V422930BCDTSSSVB	Full	42U	78.9	2004	29.5	750	30	762
	V422936BCDTSSSVB	Full	42U	78.9	2004	29.5	750	36	915
	V422942BCDTSSSVB	Full	42U	78.9	2004	29.5	750	42	1067
	V422948BCDTSTTVB	Split	42U	78.9	2004	29.5	750	48	1219
#12-24 Tapped Hole Mounting Rails	V452924BCDTSSSVB	Full	45U	84.1	2137	29.5	750	24	610
	V452930BCDTSSSVB	Full	45U	84.1	2137	29.5	750	30	762
	V452936BCDTSSSVB	Full	45U	84.1	2137	29.5	750	36	915
	V452942BCDTSSSVB	Full	45U	84.1	2137	29.5	750	42	1067
	V452948BCDTSTTVB	Split	45U	84.1	2137	29.5	750	48	1219
	V472924BCDTSSSVB	Full	47U	87.6	2226	29.5	750	24	610
	V472930BCDTSSSVB	Full	47U	87.6	2226	29.5	750	30	762
	V472936BCDTSSSVB	Full	47U	87.6	2226	29.5	750	36	915
	V472942BCDTSSSVB	Full	47U	87.6	2226	29.5	750	42	1067
	V472948BCDTSTTVB	Split	47U	87.6	2226	29.5	750	48	1219

Details subject to change without written notice.



# Server Cabinet

Forced air remains the most common and reliable method for cooling electronics. Most common servers and switches incorporate fans to draw cool air into the unit and exhaust warm air out of the unit.

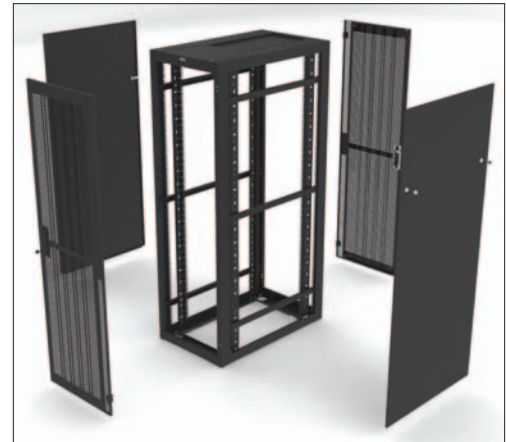
Although other environmental considerations need to be made, the number one priority when specifying a suitable server cabinet configuration is to ensure sufficient air is able to both enter the cabinet and be exhausted out of the cabinet. This is most commonly achieved by fitting high flow vented doors offering around an 80% free area on the front and the rear of the cabinet.

Cooper B-Line recommends the use of wider cabinets when side to side heat dissipating equipment, such as switches, are deployed. See the V-LINE™ Switch Cabinet details on page 9 for further details and suggestions.

For higher density applications the V-LINE range offers a series of modular accessories designed to help enhance the internal operating environment within the cabinet space, helping to avoid hot air crossover and the risk of hot spots.

**V-LINE™ Server Cabinets are comprised of the following features:**

- 24” wide welded frame assembly with open base
- Supplied with four (4) off jacking feet
- Supplied with two pair of fully adjustable 19-inch mounting rails centrally mounted in the cabinet
- High flow vented doors fitted front and rear, configured with standard locking swing handles (doors right hand hinged)
- Plain side panels fitted both sides
- Plain top panel
- Supplied with pack of fifty (50) #12/24 cage nuts and screws
- Supplied fully assembled and palletized



**If the standard specification cabinets shown do not meet your application requirements, use the “Easy Step Configurator” on page 5.**

Accessories and additional options are available as detailed on pages 17 - 26.

	Cooper B-Line Catalog No.	Side Panel Style	Effective U	Overall Cabinet Height		Width		Depth	
				in.	(mm)	In.	(mm)	in.	(mm)
EIA Square Hole Mounting Rails	V422442ACWWTSSSB	Full	42U	78.9	2004	24	610	42	1067
	V422448ACWWTSSB	Split	42U	78.9	2004	24	610	48	1219
	V452442ACWWTSSSB	Full	45U	84.1	2137	24	610	42	1067
	V452448ACWWTSSB	Split	45U	84.1	2137	24	610	48	1219
	V472442ACWWTSSSB	Full	47U	87.6	2226	24	610	42	1067
	V472448ACWWTSSB	Split	47U	87.6	2226	24	610	48	1219
#12-24 Tapped Hole Mounting Rails	V422442BCWWTSSSB	Full	42U	78.9	2004	24	610	42	1067
	V422448BCWWTSSB	Split	42U	78.9	2004	24	610	48	1219
	V452442BCWWTSSSB	Full	45U	84.1	2137	24	610	42	1067
	V452448BCWWTSSB	Split	45U	84.1	2137	24	610	48	1219
	V472442BCWWTSSSB	Full	47U	87.6	2226	24	610	42	1067
	V472448BCWWTSSB	Split	47U	87.6	2226	24	610	48	1219

Details subject to change without written notice.



For applications where side to side vented equipment is installed, Cooper B-Line recommends the use of wider cabinets configured with the mounting rails fitted centrally. This cabinet configuration allows the supply of air to be adequately provisioned at the equipment air intake location and helps to avoid back pressure at the equipment exhaust. Like the V-LINE™ Server Cabinet range, the V-LINE Switch Cabinet can be fitted with a range of modular accessories designed to help enhance the internal operating environment within the cabinet space. These enhancements help to avoid hot air crossover and help reduce the chance of hot spots.



**V-LINE™ Switch Cabinets are comprised of the following features:**

- 29 1/2" wide welded frame assembly with open base
- Supplied with four (4) off jacking feet
- Supplied with two pair of fully adjustable 19-inch mounting rails centrally mounted in the cabinet
- High flow vented door fitted front, configured with standard locking swing handle (doors right hand hinged)
- High flow double vented doors fitted rear, configured with standard locking swing handle (doors right hand hinged)
- Plain top panel
- Supplied with pack of fifty (50) #12/24 cage nuts and screws
- Supplied fully assembled and palletized

**If the standard specification cabinets shown do not meet your application requirements, use the “Easy Step Configurator” on page 5.**

Accessories and additional options are available as detailed on pages 17 - 26.

	Cooper B-Line Catalog No.	Side Panel Style	Effective U	Overall Cabinet Height		Width		Depth	
				in.	(mm)	In.	(mm)	in.	(mm)
EIA Square Hole Mounting Rails	V422942ACWXTSSSB	Full	42U	78.9	2004	29.5	750	42	1067
	V422948ACWXTTTSB	Split	42U	78.9	2004	29.5	750	48	1219
	V452942ACWXTSSSB	Full	45U	84.1	2137	29.5	750	42	1067
	V452948ACWXTTTSB	Split	45U	84.1	2137	29.5	750	48	1219
	V472942ACWXTSSSB	Full	47U	87.6	2226	29.5	750	42	1067
	V472948ACWXTTTSB	Split	47U	87.6	2226	29.5	750	48	1219
#12-24 Tapped Hole Mounting Rails	V422942BCWXTSSSB	Full	42U	78.9	2004	29.5	750	42	1067
	V422948BCWXTTTSB	Split	42U	78.9	2004	29.5	750	48	1219
	V452942BCWXTSSSB	Full	45U	84.1	2137	29.5	750	42	1067
	V452948BCWXTTTSB	Split	45U	84.1	2137	29.5	750	48	1219
	V472942BCWXTSSSB	Full	47U	87.6	2226	29.5	750	42	1067
	V472948BCWXTTTSB	Split	47U	87.6	2226	29.5	750	48	1219

Details subject to change without written notice.

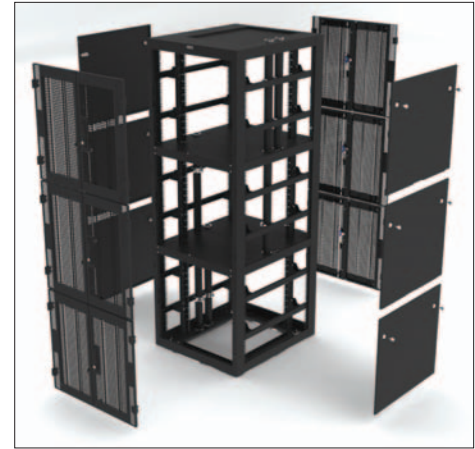


# Co-Locate Cabinet

The V-LINE™ Co-Locate Cabinet range is a completely new addition to the cabinet platform. This cabinet is available in two bay and three bay configurations, in 36”, 42” and 48” depth variants.

**V-LINE™ Co-Locate Cabinets are comprised of the following features:**

- 29.5” wide welded frame assembly with open base
- Supplied with four (4) off jacking feet
- Fitted with internal cable chases to provide secure cable access to each bay
- Supplied with two pair of fully adjustable 19-inch mounting rails centrally mounted in the cabinet
- High flow vented doors fitted at the front and rear of each bay, configured with standard locking swing handles
- Plain lockable side panels fitted both sides of each bay
- Plain top panel
- Supplied with pack of 50 off #12/24 cage nuts and screws
- Supplied fully assembled and palletized



**If the standard specification cabinets shown do not meet your application requirements, use the “Co-Locate Easy Step Configurator” on page 11.**

Accessories and additional options are available as detailed on pages 17 - 26.

	Catalog No.	Number Of Bays	Effective U	Overall Cabinet Height		Width		Depth	
				in.	(mm)	In.	(mm)	in.	(mm)
EIA Square Hole Mounting Rails	VC2452938AXXTSSSSB	2	44U	84.1	2137	29.5	750	36	915
	VC2452942AXXTSSSSB	2	44U	84.1	2137	29.5	750	42	1067
	VC2452948AXXTSSSSB	2	44U	84.1	2137	29.5	750	48	1219
	VC3452936AXXTSSSSB	3	42U	84.1	2137	29.5	750	36	915
	VC3452942AXXTSSSSB	3	42U	84.1	2137	29.5	750	42	1067
	VC3452948AXXTSSSSB	3	42U	84.1	2137	29.5	750	48	1219
#12-24 Tapped Hole Mounting Rails	VC2452936AXXTSSSSB	2	44U	84.1	2137	29.5	750	36	915
	VC2452942AXXTSSSSB	2	44U	84.1	2137	29.5	750	42	1067
	VC2452948AXXTSSSSB	2	44U	84.1	2137	29.5	750	48	1219
	VC3452936AXXTSSSSB	3	42U	84.1	2137	29.5	750	36	915
	VC3452942AXXTSSSSB	3	42U	84.1	2137	29.5	750	42	1067
	VC3452948AXXTSSSSB	3	42U	84.1	2137	29.5	750	48	1219

Details subject to change without written notice.

# Co-Locate Easy Step Configurator



<b>VC</b>	<b>V-LINE™ Co-Locate Cabinet</b>	<b>Options</b>
<b>2</b>	<b>Compartments</b>	<b>2 = 2-Bay</b> (22U per compartment) <b>3 = 3-Bay</b> (14U per compartment)
<b>45</b>	<b>Cabinet Height</b>	<b>45U</b>
<b>29</b>	<b>Cabinet Width</b>	<b>29 = 29 1/2"</b>
<b>42</b>	<b>Cabinet Depth</b>	<b>36 = 36"    42 = 42"    48 = 48"</b>
<b>A</b>	<b>Mounting Rail Type</b>	<b>A = 19" Square Holes</b> <i>Rails only available centered on co-locate cabinets</i> <b>B = 19" #12-24 Tapped Holes</b>
<b>V</b>	<b>Front Door</b>	<b>V = High Flow Vented LH</b> <b>A = Acrylic LH</b> <b>W = High Flow Vented RH</b> <b>B = Acrylic RH</b> <b>X = High Flow Vented Split*</b>
<b>X</b>	<b>Rear Door</b>	<b>S = Solid LH</b> <b>T = Solid RH</b> <i>* Only available with T &amp; D locking options.</i> <b>N = None</b>
<b>S</b>	<b>Locking Options</b>	<b>S = Swing Handle</b> (single point) <b>D = Combo Handle</b> (3-point) <b>C = Combo Handle</b> (single point) <b>P = i-PAL Handle</b> (2-point) <b>T = Swing Handle</b> (3-point) <b>N = None</b>
<b>S</b>	<b>Left Hand (LH) Side Panel Configuration</b>	<b>S = Solid</b> <b>V = Vented</b> <b>N = None</b>
<b>S</b>	<b>Right Hand (RH) Side Panel Configuration</b>	
<b>V</b>	<b>Top Panel Configuration</b>	<b>S = Solid Top</b> <b>2 = 210 CFM Fan Top</b> <b>1 = 1100 CFM Fan Top</b> <b>V = Vented Top</b> <b>4 = 420 CFM Fan Top</b> <b>N = None</b> <b>5 = 550 CFM Fan Top</b>
<b>B</b>	<b>Finish</b>	<b>A = Gray</b> <b>B = Black</b>

Details subject to change without written notice.



# Cabinet Door Options



## Features:

- 16 gauge (1.5mm) steel construction
- Door design allows for 180° opening even when ganged together
- Factory set-up is for right hand hinge with a single point swing handle lock (except split doors which are three point swing handle locks)
- Doors are easily field reversible
- Doors are field upgradeable to 3-point latching with combination and electronic locking options
- Overall cabinet depth = frame depth + front door depth + rear door depth, each door is 1" (25.4mm) deep
- Each door is fitted with an earth grounding point
- High flow vented doors incorporate an 80% free area mesh to provide optimal air management

VD	V-LINE™ Cabinet Door	Options
X	Door Style	<b>V = High Flow Vented LH</b> <b>A = Acrylic LH</b> <b>W = High Flow Vented RH</b> <b>B = Acrylic RH</b> <b>X = High Flow Vented Split*</b> <b>C = Vented Acrylic LH</b> <b>S = Solid LH</b> <b>D = Vented Acrylic RH</b> <b>T = Solid RH</b> <b>F = Split Fan Door*</b> <b>U = Solid Split*</b> <i>* Only available with T, D &amp; P locking options.</i> <b>N = None</b>
S	Locking Options	<b>S = Swing Handle (single point)</b> <b>D = Combo Handle (3-point)</b> <b>C = Combo Handle (single point)</b> <b>P = i-PAL Handle (2-point)</b> <b>T = Swing Handle (3-point)</b> <b>N = None</b>
42	Cabinet Height	<b>*14U, **22U, 24U, 38U, 42U, 45U, 47U</b> <i>*only fits 3-bay co-locate cabinets • **only fits 2-bay co-locate cabinets</i>
24	Cabinet Width	<b>24 = 24"</b> <b>29 = 29 1/2"</b>
B	Finish	<b>A = Gray</b> <b>B = Black</b>

Details subject to change without written notice.

Doors can be factory configured with a number of locking options depending on the door type.



### Standard Key Locking Swing Handles

The default standard locking option on all single door assemblies is a single point locking swing handle keyed alike. All double door assemblies are configured with a 3-point keyed alike locking swing handle assembly. 3-point locking on single door assemblies are available as an optional upgrade.



### Mechanical Combination Swing Handles

Available as an optional upgrade these handles can be configured to operate in either single point or 3-point locking configurations on single door assemblies. Only available as an optional upgrade in 3-point configuration on double door assemblies.



### i-PAL Electronic Swing Handles

Using HID proximity card technology, the i-PAL range of handles can be configured to operate in either a stand alone or networked configuration over an Ethernet network (requires i-BOX Ethernet controller). The i-PAL range can be configured to operate in either single point or two point locking configurations.

## Cabinet Door Locking Upgrade Kits

Catalog No.	UPC Number	Retro Fit Lock Kit Description
<b>VDLT24RK</b>	<b>79903839326</b>	24U 3-Point Swing
<b>VDLD24RK</b>	<b>79903839327</b>	24U 3-Point Combo
<b>VDLP24RK</b>	<b>79903839328</b>	24U 2-Point i-PAL
<b>VDLT38RK</b>	<b>79903839329</b>	38U 3-Point Swing
<b>VDLD38RK</b>	<b>79903839330</b>	38U 3-Point Combo
<b>VDLP38RK</b>	<b>79903839331</b>	38U 2-Point i-PAL
<b>VDLT42RK</b>	<b>79903839332</b>	42U 3-Point Swing
<b>VDLD42RK</b>	<b>79903839333</b>	42U 3-Point Combo
<b>VDLP42RK</b>	<b>79903839334</b>	42U 2-Point i-PAL
<b>VDLT45RK</b>	<b>79903839335</b>	45U 3-Point Swing
<b>VDLD45RK</b>	<b>79903839336</b>	45U 3-Point Combo
<b>VDLP45RK</b>	<b>79903839337</b>	45U 2-Point i-PAL
<b>VDLT47RK</b>	<b>79903839338</b>	47U 3-Point Swing
<b>VDLD47RK</b>	<b>79903839339</b>	47U 3-Point Combo
<b>VDLP47RK</b>	<b>79903839340</b>	47U 2-Point i-PAL

Details subject to change without written notice.



# Cabinet Side Panel Options



### Features:

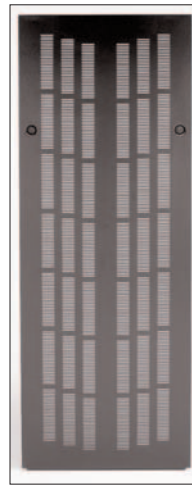
- Available in solid or vented and split configurations
- 17 gauge (1.4mm) steel construction
- Lift off design for easy equipment access
- Locking feature with twin side 1/4 turn latches
- Recessed lock to allow for panels to be installed between ganged enclosures
- Fitted with an earth grounding point



Solid Full Height



Solid Split



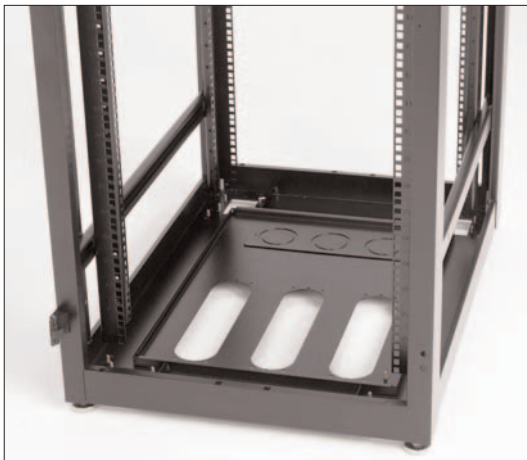
Vented Full Height



Vented Split

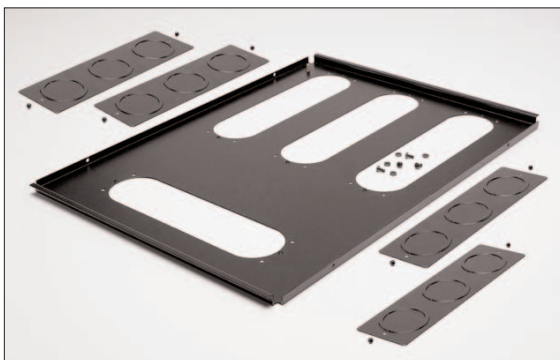
<b>VP</b>	<b>V-LINE™ Cabinet Side Panel</b>	<b>Options</b>
<b>X</b>	<b>Side Panel Style</b>	<b>S = Solid Full Height*</b> <b>T = Solid Split**</b> <b>V = Vented Full Height*</b> <b>W = Vented Split**</b> <b>N = None</b>
<b>42</b>	<b>Cabinet Height</b>	<b>*14U, **22U, 24U, 38U, 42U, 45U, 47U</b> <i>*only fits 3-bay co-locate cabinets • ** only fits 2-bay co-locate cabinets</i>
<b>24</b>	<b>Cabinet Depth</b>	<b>24 = 24" 30 = 30" *36 = 24" *42 = 42" *48 = 48"</b> <i>*Co-locate cabinets only available in these depths</i>
<b>B</b>	<b>Finish</b>	<b>A = Gray B = Black</b>

Details subject to change without written notice.

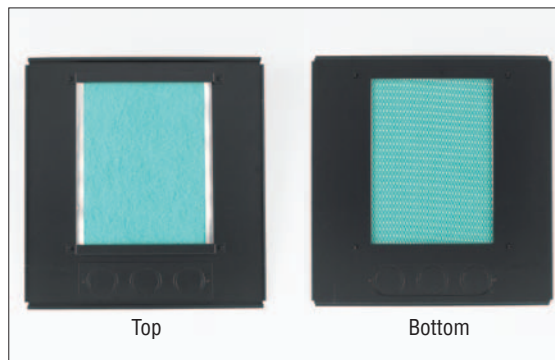


**Features:**

- Completely fills the open area at the base of the cabinet
- Bottom panels include cable entry knockout plates (part # VOZIP) as shown
- For replacement filter kits please order Part Code 79903832668



Solid Panel



Filter Panel

<b>VB</b>	<b>V-LINE™ Cabinet Bottom Panel</b>	<b>Options</b>				
<b>S</b>	<b>Bottom Panel Style</b>	<b>SP = Solid Panel (4 x OZIP Plates Fitted)</b> <b>FP = Filter Panel (1 x Filter &amp; 1 x OZIP Plate Fitted)*</b> <i>* Not available on 24" deep options</i>				
<b>24</b>	<b>Cabinet Width</b>	<b>24 = 24"</b>		<b>29 = 29 1/2"</b>		
<b>30</b>	<b>Cabinet Depth</b>	<b>24 = 24"</b>	<b>30 = 30"</b>	<b>36 = 36"</b>	<b>42 = 42"</b>	<b>48 = 48"</b>
<b>B</b>	<b>Finish</b>	<b>A = Gray</b>		<b>B = Black</b>		

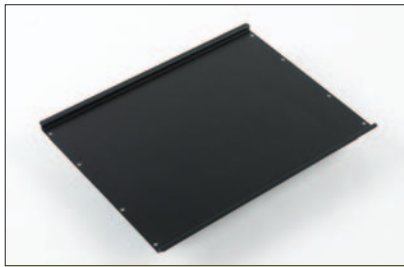
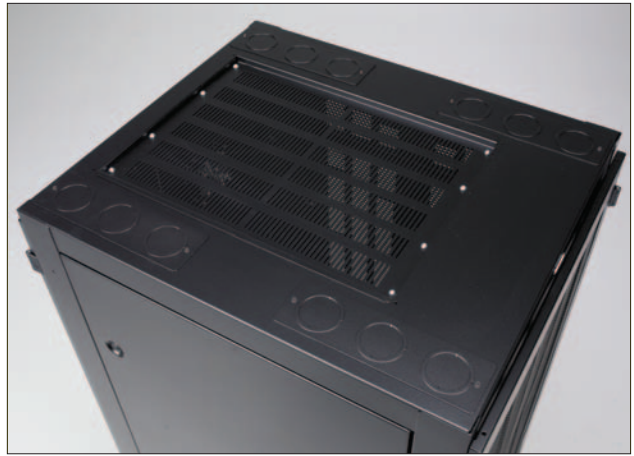
Details subject to change without written notice.



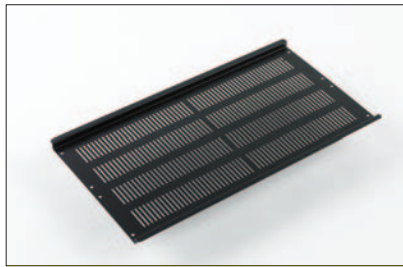
# Cabinet Top Panel Options

## Features:

- Secure installation via 24" (610mm) mounting rails welded to top of frame
- Available in solid top, vented top or fan tops for increased airflow
- Fan tops can hold up to four 105 CFM fans or two 550 CFM fans and are configured 110 VAC



Solid



Vented



550 CFM Fan



1100 CFM Fan

<b>VTP</b>	<b>V-LINE™ Cabinet Top Panel</b>	<b>Options</b>
<b>S</b>	<b>Top Panel Style</b>	<b>S = Solid Top</b> <b>2 = 210 CFM Fan Top</b> <b>1 = 1100 CFM Fan Top*</b> <b>V = Vented Top</b> <b>4 = 420 CFM Fan Top</b> <b>N = None</b> <b>5 = 550 CFM Fan Top</b> <small>* Not available on 24" deep options</small>
<b>A</b>	<b>Cabinet Size Configuration</b>	<b>A = To suit cabinet 24" wide x 30", 36", 42", or 48" Deep</b> <b>B = To suit cabinet 29 1/2" wide x 30", 36", 42", or 48" Deep</b> <b>C = To suit cabinet 24" wide x 24" Deep</b> <b>D = To suit cabinet 29 1/2" wide x 24" Deep</b>
<b>B</b>	<b>Finish</b>	<b>B = Black      G = Gray</b>

Details subject to change without written notice.





## Caster Kit

The caster kit features a unique, drop-in design that helps simplify the installation process. Casters have a 300 lb (136kg) dynamic load rating each allowing for a 1200 lb (544kg) dynamic load for cabinet on casters. Caster kits include four casters and installation hardware.

UPC Number	Cooper B-Line Catalog Number
79903836539	VCK



## Seismic Bolt-Down Kit

This kit includes four anchor plates and is used with isolated seismic anchors to attach the frame to a concrete floor in seismic applications. Kit includes the anchor plates and the hardware required to attach to the V-LINE™ frame. Seismic anchors are sold separately.

UPC Number	Cooper B-Line Catalog Number	Description
79903836537	VSBDK	Seismic Bolt-Down Kit
79903828989	ASSAM12157HN	Seismic Anchors (Hex Nut Type)



Cable Entry Knockout Plate



Plastic Bushing

## Removable / Replaceable Cable Entry Knockout Plates & Plastic Bushings

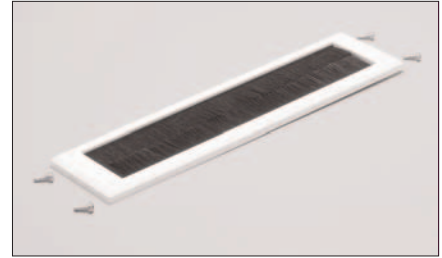
These plates are designed to help maximize the area available for cable entry into the V-LINE cabinets while eliminating large open areas that would limit security, aesthetics and the ability to keep contaminants and debris out. Four of these plates are included with each frame. These 13" (330mm) x 3<sup>3</sup>/<sub>4</sub>" (95mm) removable plates feature three 2<sup>1</sup>/<sub>2</sub>" (58mm) / 3" (76mm) concentric knockouts allowing numerous different cable entry options in each corner of the V-Line cabinet frame. The bottom panel also includes four cable entry knockout plates that include the same benefits as the top panel knockout plates. Optional plastic bushings fit in the openings to enhance appearance and offer additional protection for the cables.

UPC Number	Cooper B-Line Catalog Number	Description
79903836792	VOZIP	Cable Entry Knockout Plate
79903825615	E013603	2 <sup>1</sup> / <sub>2</sub> " Plastic Bushing (2 pack)
79903821893	E018757	3" Plastic Bushing (2 pack)

Details subject to change without written notice.

## Brush Strips Cable Opening Plates

These plates are designed to maximize the area available for cable entry into the enclosures while limiting air leakage out of the cabinet and limiting the entry of dust and debris. These 13" (330mm) x 3 3/4" (95mm) removable plates install perfectly in the space where the cable entry knockout plates (part # VOZIP) are installed on the frames. The bottom panel also includes four spaces where this plate can be used for the same benefits when bringing cables in from the bottom of the enclosure.



UPC Number	Cooper B-Line Catalog Number
79903836536	VBCOK

## Mounting Rail Offset Kits

If a mounting rail offset is needed, this kit is available as a retrofit option. The offset kits allow the 19" mounting rails to be offset to the left hand or right hand side of all V-LINE™ 29 1/2" wide cabinet configurations.



UPC Number	Cooper B-Line Catalog Number	Description
79903839324	VLMROK19B	Universal 19" Retro-fit Rail Offset Kit
79903839325	VLMROK23B	Universal 23" Retro-fit Rail Offset Kit

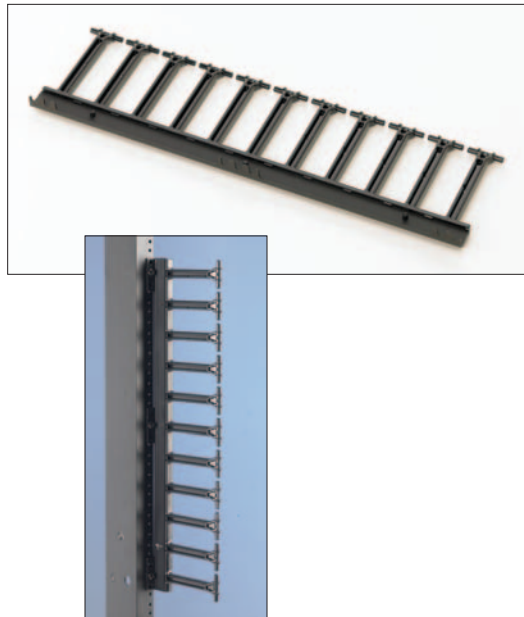
Details subject to change without written notice.



## Air Dam / Cable Manager Kit

This kit is used to provide a means of combining cable management fingers to organize patch cords and brush strips to help manipulate airflow through the cabinet. The 11U high cable management fingers are installed between the rack mounted equipment and the mounting rails. The brush strip sections are secured to the back of the mounting rails with plastic push-in fasteners and do not interfere with any available mounting spaces. Cable management fingers can be purchased separately.

VVB	V-LINE™ Cabinet Vertical Baffle	Options	
1	Rail Mounting Configuration	1 = 19" 2 = *23"	* 23" mounting centers are only available in 29 1/2" wide cabinets
C	Rail Offset Position	C = Center D = *Offset	* Offset configuration is only available in 29 1/2" wide cabinets
42	Cabinet Height	24U, 38U, 42U, 45U, 47U	
24	Cabinet Width	24 = 24"    29 = 29 1/2"	
B	Finish	B = Black    G = Gray	



## Vertical Cable Manager Kit

This kit are comprised of an 11U high piece of plastic finger section with slotted fixing points to match the vertical U pitches. This enables the finger sections to be mounted and secured in tandem with any 19" equipment.

UPC Number	Cooper B-Line Catalog Number
79903833732	SB860FSFB

Details subject to change without written notice.



## Cabinet Ganging Kit

The V-LINE™ Cabinet frame has been updated to include a simpler ganging facility. Each cabinet frame has knock-outs in the side members, allowing frames to be butted side by side, and simply fastened together. This feature allows the cabinets to be ganged with or without side panels fitted.

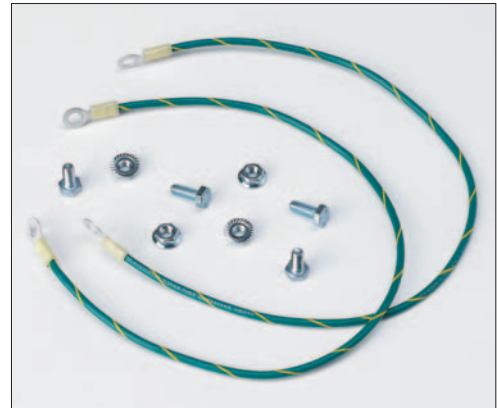
Ganging kits include six (6) bolts and six (6) flange nuts



UPC Number	Cooper B-Line Catalog Number
79903839125	VLGK

## Cabinet Earthing Kit

The universal cabinet earthing kit includes the appropriate number of earth leads and hardware, which helps provide the appropriate earth continuity. Throughout, the frame and cladding components are in compliance with EN60950 Clause 2.5.11. For V-LINE co-locate cabinet assemblies, one earth kit will be required per bay configuration.



UPC Number	Cooper B-Line Catalog Number
79903833081	EEK6

## Screws & Cage Nuts

All part numbers are packaged and sold in bags of 100 pieces

Cage Nuts



Screws



	UPC Number	Cooper B-Line Catalog Number	Description	Finish
Screws	79903821311	E2MA1032PHMS100	#10-32 Phillips	Clear Zinc
	79903821470	E2MA1224PHMS100	#12-24 Phillips	Clear Zinc
	79903830134	E2MAM6PHMS100	M6 Phillips	Yellow Zinc
Cage Nuts	79903829784	E2MACN1032100	#10-32 Phillips	Clear Zinc
	79903814665	E2MACN1224100	#12-24 Phillips	Clear Zinc
	79903830133	E2MACNM6100	M6 Phillips	Yellow Zinc

Details subject to change without written notice.



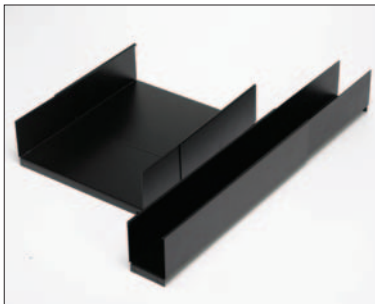
## Enhanced Vertical Cable Manager Kit

Developed to provide enhanced vertical cable management, these new cable manager kits have been designed specifically to complement the 29½" V-LINE™ cabinet platform. The 2¾" wide units can be fitted on the left hand and right hand side of the cabinets with the mounting rails positioned centrally. The 5½" wide units can only be fitted on the left or right to match the optional mounting rail offset configurations.

- Can factory fitted or easily retro-fitted in the field
- Split doors for improved operation and easy removal
- Integral cable tie lances and multiple mounting points for twist and lock cable management arms
- Steel material with UL 94V-0 black plastic components
- Black RAL 9005 epoxy polyester powder coat paint finish

UPC Number	Cooper B-Line Catalog Number	Cabinet Unit Height	Cabinet Width		Offset
			in.	(mm)	
79903839187	VVCMC24FB	24U	2¾"	70	Center
79903839189	VVCMC38FB	38U			
79903838355	VVCMC42FB	42U			
79903839191	VVCMC45FB	45U			
79903838356	VVCMC47FB	47U			
79903839188	VVCMS24FB	24U	5½"	140	Offset Left or Right
79903839190	VVCMS38FB	38U			
79903838357	VVCMS42FB	42U			
79903839192	VVCMS45FB	45U			
79903838358	VVCMS47FB	47U			

## Horizontal Cable Trough Kit



Designed to span between front and rear mounted enhanced vertical cable managers, these cable troughs simply clip into the rear of the vertical manager in line with the cable pass through.

- Can factory fitted or easily retro-fitted in the field
- Available in two widths
- Available in varying depth ranges
- Black RAL 9005 epoxy polyester powder coat paint finish

UPC Number	Cooper B-Line Catalog Number	Min. Depth Adjustment		Max. Depth Adjustment		To Suit Vertical Manager Configuration	
		in.	(mm)	in.	(mm)	in.	(mm)
79903838391	ACCT070400B	10¼"	260	15⅞"	403	2.785"	70
79903838392	ACCT070590B	14⅜"	365	23⅜"	594	2.785"	70
79903838393	ACCT070890B	18⅞"	460	31⅞"	70	2.785"	70
79903838397	VCT5501600B	10¼"	260	15⅞"	403	5.5"	140
79903838398	VCT5502350B	14⅜"	365	23⅜"	594	5.5"	140
79903838399	VCT5503525B	18⅞"	460	31⅞"	70	5.5"	140

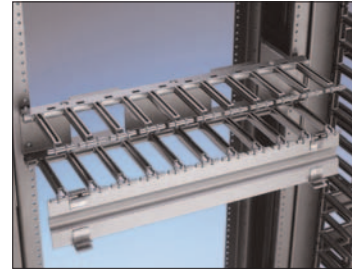
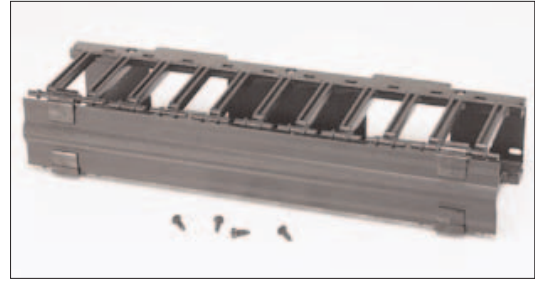
Details subject to change without written notice.



## Horizontal Cable Manager Kit

Available in 19" and 23" mounting formats. These horizontal cable managers compliment the enhanced vertical managers to provide a complete cable management solution.

- Available in 1U, 2U and 3U heights
- Available in 19" and 23" mounting formats
- Can factory fitted or easily retro-fitted in the field
- Clip on cover allows cover to be hinged up or down or removed for easy access
- Steel material with UL 94V-0 black plastic components
- Black RAL 9005 epoxy polyester powder coat paint finish

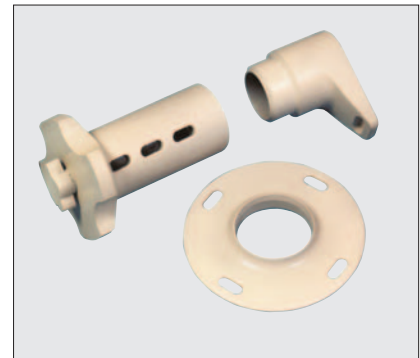


UPC Number	Cooper B-Line Catalog Number	Mounting Configuration	Mounting Units
79903833709	SB87019S1FB	19"	1U
79903833711	SB87019S2FB	19"	4U
79903833713	SB87019S3FB	19"	3U
79903833715	SB87023S1FB	23"	1U
79903833717	SB87023S2FB	23"	2U
79903833719	SB87023S3FB	23"	3U

## Twist & Lock Cable Manager Arm Kit

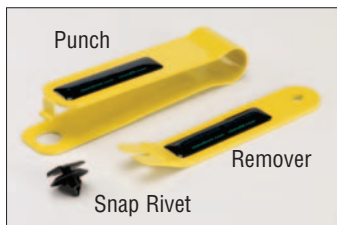
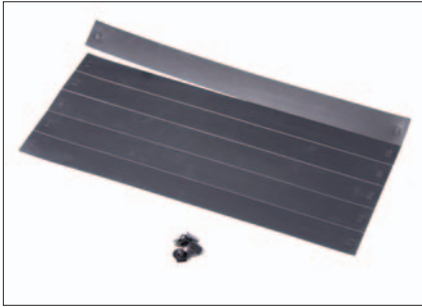
These innovative cable manager arm kits fit into keyway slots in the enhanced vertical cable managers providing internal cable segregation.

- Supplied in packs of 10 off arms and swiveling end caps
- Divider rings available separately in pack of 10
- Manufactured from glass reinforced plastic (GRP) and finished in standard light gray



UPC Number	Cooper B-Line Catalog Number	Description
79903829486	TLCMS	10 pk. Twist & Lock Cable Management Arms
79903829487	TLCMR	10 pk. Twist & Lock Divider Rings

Details subject to change without written notice.



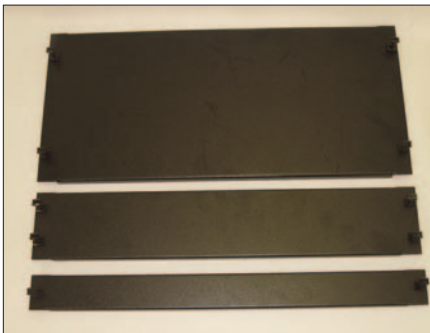
## Universal 19" PlenaFill Plastic Blanking Panels

Designed to fit square pierced mounting rails, these plastic tear off blanking panels provide an ideal solution to quickly and easily improve your cabinet's cooling efficiency.

- Each panel is a 27U sheet with serrated tear offs every 1U
- Available in single sheet or 10 sheet packs
- Manufactured from fire retardant UL-VO compliant material, finished dark gray

UPC Number	Cooper B-Line Catalog Number	Description
79903839350	<b>CBLPF27U-1</b>	(1) 27U Blanking Panel & 1 Pack of 50 Square Hole Snap Rivets
79903839351	<b>CBLPF27U-10BR</b>	(10) 27U Blanking Panels & 10 Packs of 50 Square Hole Snap Rivets
79903839352	<b>CBLPFHP</b>	Hole Punch Tool
79903839353	<b>CBLPFSRRT</b>	Snap Rivet Remover Tool
79903839354	<b>CBLPFBR</b>	Snap Rivets (50 Pack)

## Quick Fit 19" Blanking Panels



Designed to fit square pierced mounting rails, these tool-less quick fit blanking panels simply clip into position using captive 1/4 turn fasteners.

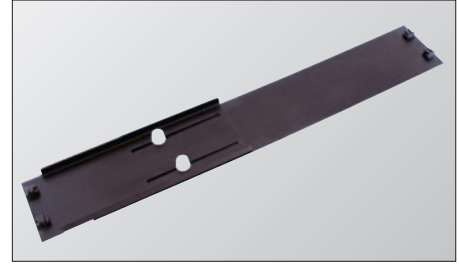
- Available in 1U, 2U and 5U height options
- Can factory fitted or easily retro-fitted in the field
- Black RAL 9005 epoxy polyester powder coat paint finish

UPC Number	Cooper B-Line Catalog Number	Description
79903836793	<b>PPS1UQFB</b>	1U Quick Fit 19" Blank Panel
79903836794	<b>PPS2UQFB</b>	2U Quick Fit 19" Blank Panel
79903836795	<b>PPS5UQFB</b>	5U Quick Fit 19" Blank Panel

Details subject to change without written notice.

## Adjustable Depth Side Blanking Panels

These blanking panels are designed to be used in to aid thermal management in applications where equipment cools side to side. These adjustable depth blanking panels clip into the side mount facility on the V-LINE™ cabinet mounting rails, simply clipping into place using the tool-less quick fit captive 1/4 turn fasteners.



- Available in 1U, 2U and 5U height options
- Can factory fitted or easily retro-fitted in the field
- Black RAL 9005 epoxy polyester powder coat paint finish

UPC No.	Cooper B-Line Catalog No.	Mounting Depth Range				Blank Panel Description
		Minimum		Maximum		
		in.	(mm)	in.	(mm)	
79903839341	SESBP1U3QFB	10.4"	264	14.4"	366	1U Quick Fit 19"
79903839342	SESBP1U4QFB	14.8"	376	18.8"	478	1U Quick Fit 19"
79903839343	SESBP1U5QFB	19.2"	488	23.2"	590	1U Quick Fit 19"
79903839344	SESBP2U3QFB	10.4"	264	14.4"	366	2U Quick Fit 19"
79903839345	SESBP2U4QFB	14.8"	376	18.8"	478	2U Quick Fit 19"
79903839346	SESBP2U5QFB	19.2"	488	23.2"	590	2U Quick Fit 19"
79903839347	SESBP5U3QFB	10.4"	264	14.4"	366	5U Quick Fit 19"
79903839348	SESBP5U4QFB	14.8"	376	18.8"	478	5U Quick Fit 19"
79903839349	SESBP5U5QFB	19.2"	488	23.2"	590	5U Quick Fit 19"

## Cable Guide Kit

Cable guides are designed to install directly on mounting rails for vertical cable management. Guide size is 4" (101mm) x 2" (51mm). Guides have a powder coat finish and include mounting hardware.

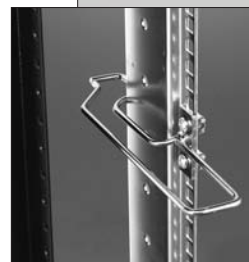
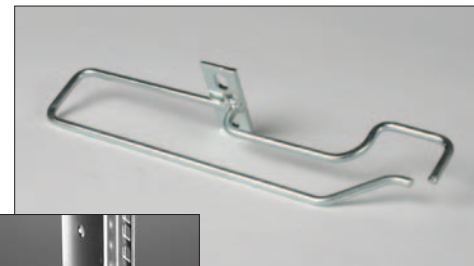


UPC Number	Cooper B-Line Catalog Number
79903816101	E2MACMR3BLP

## Narrow Cable Hoop Kit

Narrow cable hoops are designed to maximize cable management in a 24" (600mm) wide cabinet. Each hoop has 2.4 in.<sup>2</sup> (1550mm<sup>2</sup>) of internal cable management space. Narrow cable hoops install on the mounting rail between the mounting rail and side panel. Installs in 1U.

- Standard finish is yellow zinc plated and clear passivate (silver).

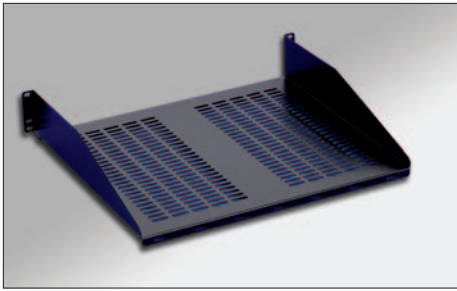


Cable Hoop installed on rail

UPC Number	Cooper B-Line Catalog Number
79903829481	ACH6

Details subject to change without written notice.

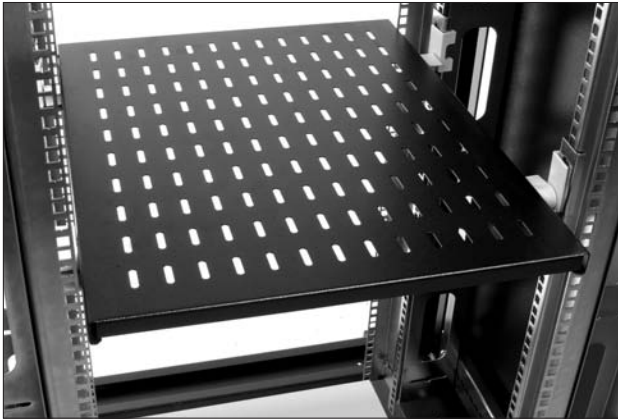




## Cantilever Shelf

This shelf is designed to support small monitors, desktop hubs and switches. Installs in 2U and has a load capacity of 60 lbs. (27.2kg).

UPC Number	Cooper B-Line Catalog Number	Description
79903829655	E2SHCLSLP1915B	Fits all cabinet depths



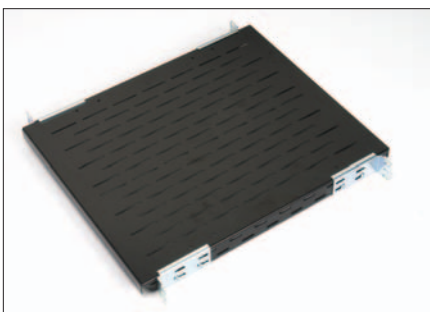
Shelf mounted in cabinet

## Universal Quick Fit Fixed Shelf

The universal quick fit fixed shelves are designed to provide maximum versatility and can be installed or relocated within the cabinet quickly without the use of tools. Shelves are fully ventilated and designed to install on front and rear 19" EIA square hole mounting rails.

- Load capacity 75 lbs. (34.0kg)

UPC Number	Cooper B-Line Catalog Number	EIA Mtg. Width in.	Rail Spacing Front to Rear Min. - Max.		Shelf Depth	
			in.	(mm)	in.	(mm)
79903830023	QRSV45B	19	11 <sup>11</sup> / <sub>16</sub> - 17 <sup>11</sup> / <sub>16</sub>	297 - 449	17 <sup>1</sup> / <sub>2</sub>	450
79903830031	QRSV65B	19	17 <sup>11</sup> / <sub>16</sub> - 25 <sup>9</sup> / <sub>16</sub>	449 - 649	25 <sup>1</sup> / <sub>2</sub>	650
79903830035	QRSV75B	19	25 <sup>9</sup> / <sub>16</sub> - 29 <sup>1</sup> / <sub>2</sub>	649 - 749	29 <sup>1</sup> / <sub>2</sub>	750



## Fixed Shelves

Fixed shelves feature a flow-through perforated design for maximum equipment ventilation. These shelves feature adjustable shelf mounting brackets that adapt to all rail depths.

- All shelves are manufactured from 14 gauge (2.0mm) steel
- Universal EIA 310 D mounting
- Rated at 150lbs (68kg) evenly distributed
- Finished in Black RAL 9005 epoxy polyester powder coat paint

UPC Number	Cooper B-Line Catalog Number	Overall Shelf Depth	
		in.	(mm)
79903829580	E2SH4P1930B	30	762
79903829583	E2SH4P1936B	36	914



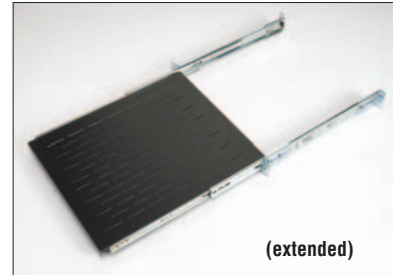
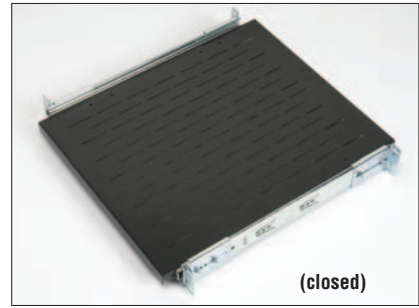
Details subject to change without written notice.

## Sliding Shelves

Like the fixed shelves, these sliding shelves feature a flow-through perforated design for maximum equipment ventilation. They also feature adjustable shelf mounting brackets that adapt to all rail depths.

- All shelves are manufactured from 14 gauge (2.0mm) steel
- Universal EIA 310 D mounting
- Rated at 150lbs (68kg) evenly distributed
- Black RAL 9005 epoxy polyester powder coat paint finish

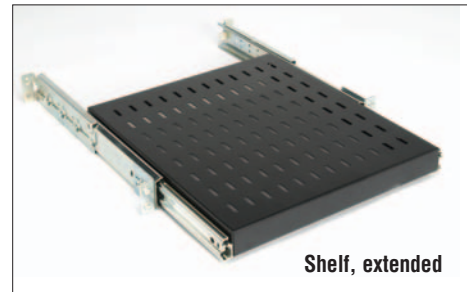
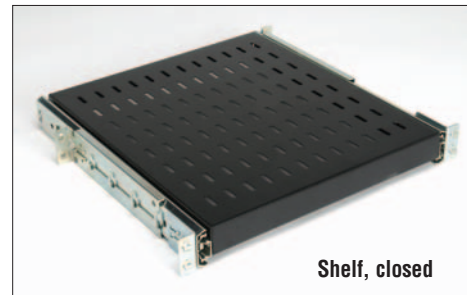
UPC Number	Cooper B-Line Catalog Number	Overall Shelf Depth	
		in.	(mm)
79903829619	E2SHSS1930B	30	762
79903829621	E2SHSS1936B	36	914



## Universal Quick Fit Sliding Shelves

The universal quick fit sliding shelf is easy to install and provides quick access to your equipment. This shelf is fully ventilated and designed to install on front and rear 19" EIA square hole mounting rails. Each shelf has a load capacity of 275 lbs. (125kg).

Mounting bracket per IEC 917-2-1



UPC Number	Cooper B-Line Catalog Number	EIA Mtg. Width in.	Rail Spacing Front to Rear Min. - Max.		Shelf Depth	
			in.	(mm)	in.	(mm)
79903829731	QRTSV45B	19	14 <sup>7</sup> / <sub>8</sub> - 20 <sup>3</sup> / <sub>16</sub>	363 - 513	17 <sup>1</sup> / <sub>2</sub>	450
79903829732	QRTSV65B	19	20 <sup>3</sup> / <sub>16</sub> - 26 <sup>1</sup> / <sub>8</sub>	513 - 663	25 <sup>1</sup> / <sub>2</sub>	650
79903829733	QRTSV75B	19	26 <sup>1</sup> / <sub>8</sub> - 32	663 - 812	29 <sup>1</sup> / <sub>2</sub>	750

Details subject to change without written notice.



**Access Cabinet**



**Rack & Runway  
RCM+ Rack**



**E2 Zone 4 Cabinets**



**Value Wall Mount Cabinets**



**E2  
Wall Mount  
Cabinets**



**V-LINE  
Wall Mount  
Cabinets**

## Other Cooper B-Line Product Lines

Strut Systems (Bolted Framing)  
Cable Tray Systems  
Electrical Enclosures  
Electronic Enclosures  
Pipe Hanger & Support Systems  
Spring Steel Fasteners  
Cable Runway & Relay Racks (CommData)  
Meter Mounting & Distribution Equipment  
Anchors

VLNGCD-10

### Cooper B-Line

509 West Monroe Street  
Highland, IL 62249  
Phone: 800-851-7415  
Fax: 618-654-1917

[www.cooperbline.com](http://www.cooperbline.com)



**SYSTEMS THAT MAKE SENSE**

Cooper Industries, Ltd.  
600 Travis, Ste. 5800  
Houston, TX 77002-1001  
Phone: 713-209-8400  
[www.cooperindustries.com](http://www.cooperindustries.com)