

First, a little background. Many scoring, perfining, cutting devices and pull-out wheels can be used simultaneously on the slitter shafts of most folding or scoring machines. In theory, they should all be moving the sheet forward at the same speed.

**THE PROBLEM:** the outside diameters on these tools and pull-out wheels varies, often significantly. (This can be due to normal wear, especially with rubber wheels, aftermarket products combined with OEM tools, and manufacturer's variations and minor design changes over the years.) **A tool with a larger outside diameter will want to move the sheet**

**faster than neighboring tools with smaller diameters.**

This can cause lead edge nicks or tears when scoring or perfining, "tailing" of the sheet, crooked or curved scores, misregister. and so on.

So if you're struggling with any of these, this tip might be able to help you, and it only takes about 30 seconds to try.

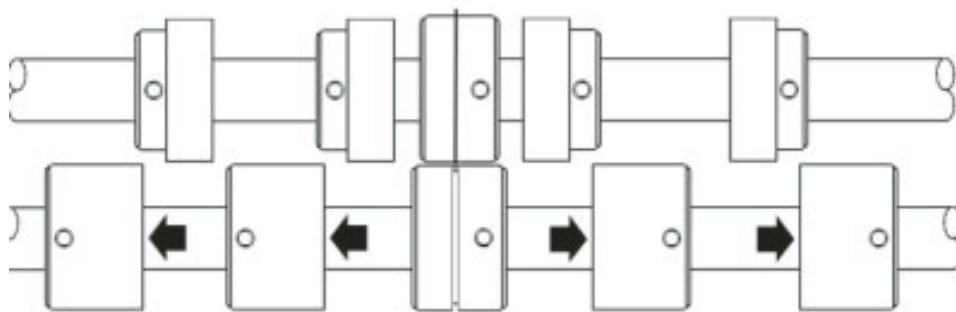
**SOLUTION:** Leaving the pull out wheels on the shaft, slide either the upper OR lower wheels out of position so they're not touching their mate (illustrated below.)

In many cases, your problem will simply disappear and you

can run the job as is!

Of course, not everyone gets so lucky, but you'd be surprised how often this works. Some tools, like perf devices which use a steel blade riding in a steel female channel or against a flat counter knife, are resistant to this technique. But it's worked enough times for me to say "give it a shot!"

If you're using Technifold's Micro Perforator, always be sure you're using the correct perf blade/nylon anvil combo. And of course, call us at 877-224-4681 Option 5 if you have a question.



*A super-fast way to troubleshoot lead-edge nicking, "tailing" of the sheet, misregister. or crooked scores.*

*Simply offset the pull-out wheels as shown at left and see if your problem goes away!*

## How To Hand Fold Short-Run Jobs Faster

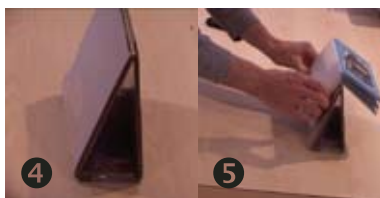
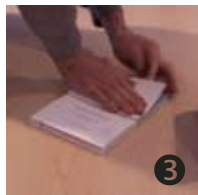
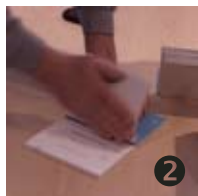
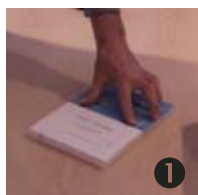
### THE PROBLEM:

Often a run length is so small that it's just not worth taking time to set up the folder. Or in the digital world, there just aren't any overs to work with, and you don't want to take time to eliminate scuffing, scratching, mis-feeds, etc on a shorter run.

Or maybe your folding machine is booked with another job and you've just GOT to get a shorter run out, even if it's a few thousand pieces.

### THE SOLUTION:

Don't bother with the folding machine, but do them by hand. But instead of picking up one sheet at a time and folding it over, here's an old tip that will have you whizzing through any size job. **\*\*\*NOTE\*\*\*** This trick works only on cover stocks that have a good crease (generally about 7-8pt and up.)



1) Take a stack of the job, with the inside facing up, hold the stack with one hand near the score. (Fig 1)

2) Grab about 1/8 to 1/4" of stock with the other hand and soft fold

it over (Fig 2 & 3) Repeat for rest of job.

3) Make a jig or use any upright fixture that will support a lift of the soft folded cards. Here I simply folded over corrugated in a triangle and taped it to the desk...that's about as low-tech as you can get! (Fig 4)

4) Drop a stack of the soft-folded cards over the jig as shown (Fig 5)

5) Then with a pinching motion on one hand, pull off the cards one by one and place them in the other hand. A bit of Tacky Finger helps. With a bit of practice you can fly through hundreds of folded pieces.