



Samsung colour laser multifunction printer CLX-6220FX / 6250FX.

- high speed
- enhanced specification
- smooth network integration
- duplex printing



Samsung's focus on high specification and quality colour prints has shaped the development of this multifunctional printer range. When your business demands high performance levels of printing, scanning and copying the Samsung CLX-6220FX / 6250FX range is an ideal option. The Samsung CLX-6220FX / 6250FX range offers consistently outstanding colour prints, copies, scanning as well as minimising operational costs.



high speed

Users benefit from a high speed printer, copier and scanner that offers high resolution document printing. The Samsung CLX-6220FX / 6250FX range has a 20 - 24 ppm print speed as well as a first page out time of as fast as 17 seconds*. * 17 s refers to CLX-6250FX only.



enhanced specification

With a 360 / 700 MHz CPU* and a generous 256 MB RAM, the Samsung CLX-6220FX / 6250FX range makes it easy to process, store and handle jobs. The added features and processing power mean it's suitable for the most demanding office environment. * 700 MHz CPU refers to CLX-6250FX only.



smooth network integration

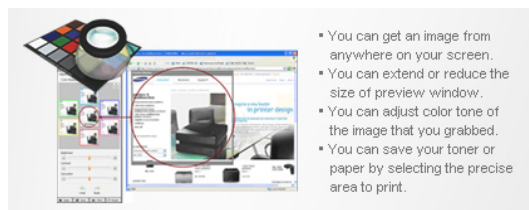
Conveniently network ready the Samsung CLX-6220FX / 6250FX range is easy to integrate into your IT infrastructure. Future-proof capabilities for the next generation of Internet protocol (IPv6).

duplex printing



With the Samsung CLX-6220FX / 6250FX range duplex printing has been made easier and more convenient with the removal of the unnecessary need for paper reinsertion. The duplex automatic document feeder saves time and money by loading several sheets at a time to be able to print double-sided documents automatically, including faxes.

Samsung Easy Colour Manager



- You can get an image from anywhere on your screen.
- You can extend or reduce the size of preview window.
- You can adjust color tone of the image that you grabbed.
- You can save your toner or paper by selecting the precise area to print.

Easy Colour Manager allows users to easily adjust colour balance, brightness, contrast and saturation of any image that you view on your monitor. It can be especially useful if you have specific colour preferences, or if your company has its own brand requirements.

Power Save mode



Reduces the cost of printing and lowers the temperature of the machine, creating a more durable environment for the printer components. Less wear and tear means extended quality and fewer replacement parts needed.

Blue Compass Navigation



Samsung's unique Blue Compass Navigation with 4 Line LCD screen is easy to learn and even easier to use, so you can be more productive, more quickly. The navigation array gives you instant access to all the different print functions and controls. Simple, intuitive menus and buttons add to the savings in training and troubleshooting time. 4 line LCD screen make operations quick and easy, and printer control panels have everything covered, including job status, toner level, paper jam, paper empty and cover open alerts.

direct USB interface



The Samsung CLX-6220FX / 6250FX range utilises the latest technology to ensure total convenience. With a USB port located on the front of the printer you can easily access and print the files stored on your USB drive. With a wide range of files supported from PDF, BMP, TIFF and JPEG you can save time by printing straight from the USB drive.

energy efficient

Samsung's Instant Fusing technology utilises low energy lamps for heating the internal print roller rather than the traditional high energy heating elements. This allows for a more energy efficient and faster printer.

Samsung's Real-time Calibration technology



Samsung's Real-time Calibration technology ensures documents are printed to a consistently high colour quality. However, when dealing with important documents that require special attention, users can choose to manually define the colour quality that will appear on their documents. The enhanced CTD (Colour Toner Density) sensor ensures colour output is always clear, sharp and professional.

high resolution



Communication is key in any business. Colour print quality can make your company stand out. The Samsung CLX-6220FX / 6250FX range excels in its printing capability by featuring a resolution level of 9600 x 600 dpi and high glossiness level, providing you with consistent professional documents.

toner management



With the Toner Save mode you can monitor and effectively limit your toner usage for a cost effective business solution. Using less toner on each page can extend your cartridge life, significantly reducing your cost per page and helping to meet environmental standards.

Overview	Function	Color Print, Copy, Fax, Scan
Print	Speed (Mono)	up to 20 ppm in A4 (21 ppm in letter)
	Speed (Color)	up to 20 ppm in A4 (21 ppm in letter)
Copy	First Print Out Time (Mono)	as fast as 24 seconds
	First Print Out Time (Colour)	as fast as 24 seconds
	Resolution	up to 9600 x 600 dpi effective output
	Emulation	PostScript3, PCL5c, PCL6, SPL-C (Samsung Printer Language Color)
	Duplex	built-in
	Speed (Mono)	up to 20 cpm in A4 (21 cpm in letter) up to 20 cpm in A4 (21 cpm in letter) best : 9600 x 600 dpi effective output normal : 1200 x 600 dpi draft : 600 x 600 dpi
	First Copy Out Time (Mono)	as fast as 27 seconds
Scan	First Copy Out Time (Colour)	as fast as 27 seconds
	Zoom Rate	25 ~ 400% (platen), 25 ~ 100% (ADF)
	Multi Copy	1 ~ 99
	Duplex Copy	built-in
	Copy Features	ID Copy, Clone Copy, N-up Copy, Poster Copy
	Compatibility	TWAIN standard, WIA standard (Windows XP only)
	Method	color flatbed scanner or DADF
Fax	Resolution (Optical)	up to 600 x 600 dpi
	Resolution (Enhanced)	up to 4800 x 4800 dpi
	Scan to	USB / SMB / FTP / network / e-mail
	Compatibility	ITU-T G3
	Modem speed	33.6 Kbps
Paper Handling		up to 300 x 300 dpi (B / W), 200 x 200 dpi (color)
	Memory	8 MB
	Auto Dial	Yes
	Fax Feature	Color Fax, PC-Fax (mono send only, included in SmarThru Office)
	Input Capacity and Types	250-sheet cassette, 100-sheet multi-purpose tray
	Output Capacity and Types	up to 170 - sheet @ 80 g/m ² face down
	Media Size	76 x 127 mm (3" x 5") ~ 216 x 356 mm (8.5" x 14")
Media Type	Envelopes, Labels, Card Stock, Bond, Archive	
	ADF Capacity	50 - sheet
	ADF Document Size	width : 142 ~ 216 mm (5.6" ~ 8.5") length : 148 ~ 356

		mm (5.8" ~ 14")
General	LCD	16 x 4 line LCD (white back light)
	Memory / Storage	256 MB (max. 512 MB)
	OS Compatibility	Windows 2000 / XP / 2003 / Vista (include 64 bit) / 7 Various Linux OS, Mac OS X 10.3 ~ 10.5
	Interface	hi-speed USB 2.0, Ethernet 10 / 100 base-TXUSB host 2.0 (scan to USB, USB print)
	Noise Level	less than 53 dBA (printing)less than 54 dBA (copying)less than 32 dBA (standby)
	Duty Cycle, Monthly	up to 65000 pages
	Dimension (W x D x H)	468 x 498 x 651 mm
	Weight	36 kg
Consumables	Black Toner Cartridge	average continuous black cartridge yieldhigh yield : 5000 standard pagesstandard yield : 2500 standard pages (ships with 2500 pages standard toner cartridge)(1)
	Yellow/Magenta/Cyan Toner Cartridge	average continuous yellow / magenta / cyan cartridge yieldhigh yield : 4000 standard pagesstandard yield : 2000 standard pages (ships with 2000 pages standard toner cartridge)(2)
	Transfer Belt	approx. 50000 pages (CLT-T508)
Options	Options	128 MB memory : CLP-MEM201256 MB memory : CLP -MEM202second cassette feeder : CLX-S6250A

Features and specifications are subject to change without prior notification.

- (1) Declared yield value in accordance with ISO / IEC 19798.
- (2) Declared yield value in accordance with ISO / IEC 19798.