



RigStat, LP
 13003 SW Freeway, Suite 120
 Stafford, TX 77477
 281.491.5817
 www.rigstat.com

RigStat Helideck Monitoring System (HMS)

RigStat provides its Helideck Monitoring System (HMS) with Preflight Weather Report (PWR) capabilities. The RigStat HMS is compliant with CAP 437 requirements.

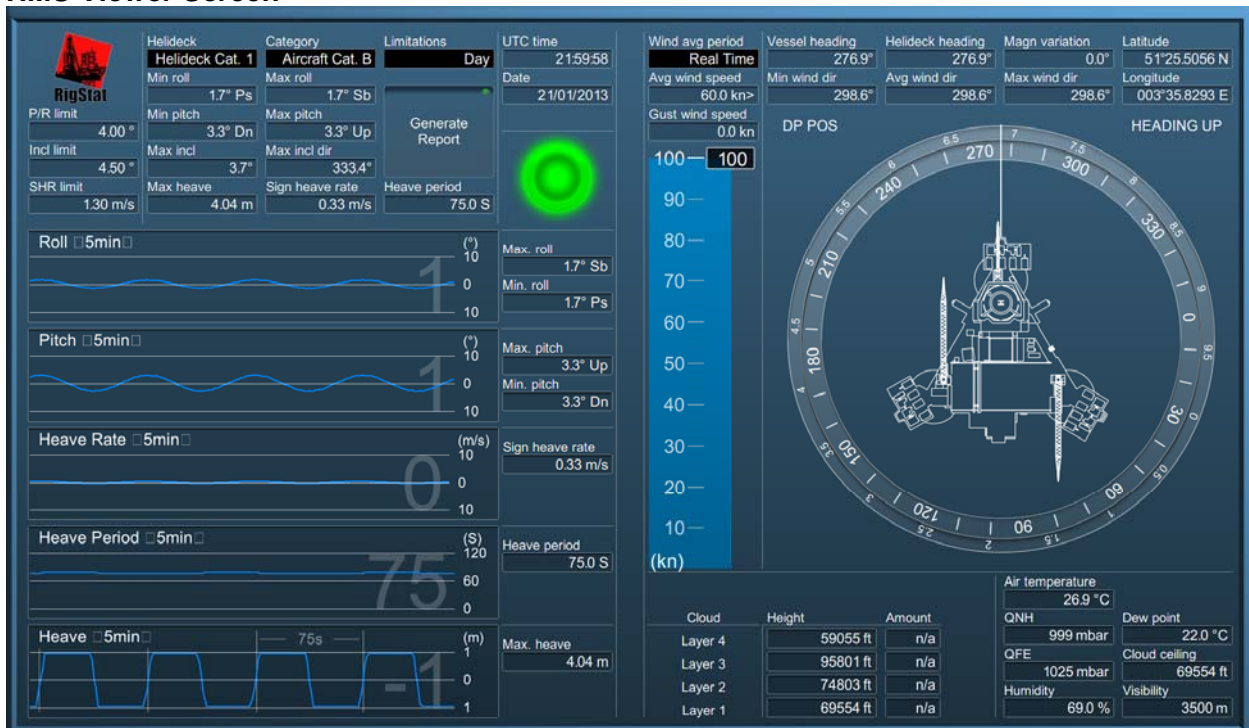


HMS Viewer Information

The HMS viewer displays the following:

- UTC Time & Date
- Min/Max Pitch & Roll; Max Inclination
- Max Heave; Heave Velocity; & Heave Period
- Graphs of Roll/Pitch/Heave with Selectable Time Periods
- Vessel and Helideck Heading & Magnetic Variation
- Latitude & Longitude
- Horizontal Visibility
- Wind Speed and Direction with Gust Wind Speed
- Compass (compass indicator has vessel outline with Helideck)
- Cloud Layers & Heights
- Air Temperature
- QNH & QFE Barometric Pressures
- Humidity & Dew Point

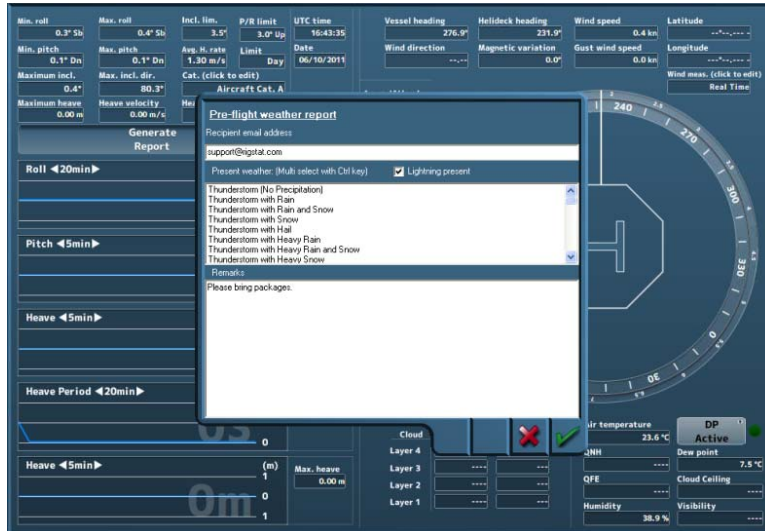
HMS Viewer Screen



The compass rose can be customized to display the particular vessel image.

Preflight Weather Report Preparation

One of the requirements of a Helideck Monitoring System is its capability to produce a Preflight Weather Report (PWR). On the vessel, the PWR is generated by selecting the "Generate Report" button on the HMS Viewer. See below:

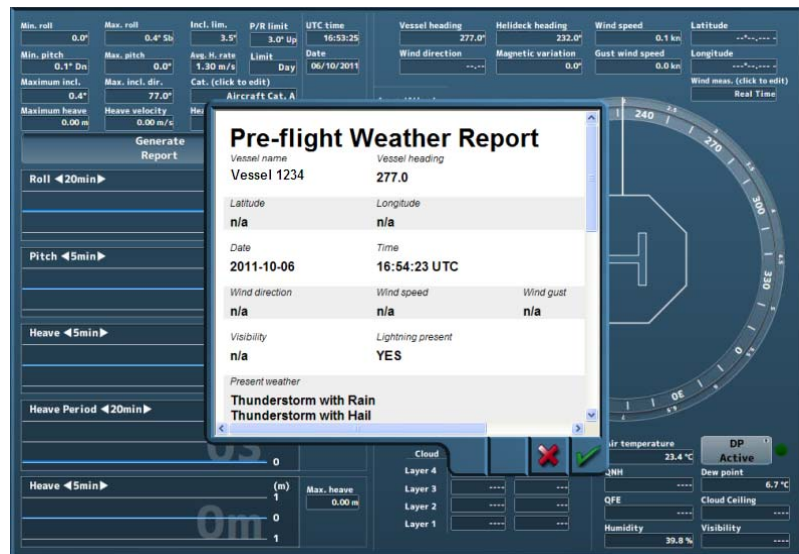


A single email address or multiple addresses are entered for the report delivery. Next, multiple standard weather conditions are selectable for inclusion in the report; i.e., lightning present, heavy rain, fog, hail, etc. Finally, there is a Remarks section for a free-form text message. The Preflight Weather Report is then presented for review when the green checkmark is depressed.

Preflight Weather Report Preview

The PWR is presented in the preview screen, and can be viewed in its entirety by using the up/down arrows. If the report is acceptable, depressing the green checkmark sends the report on its way. The HMS viewer provides an alarm message if the PWR can not be sent due to communication system problems.

At the same time the email message is sent, a copy of the PWR is placed in the RigStat outbound message queue. Within a minute or two, RigStat sends the PWR and all sensor values to its Internet portal for display.



Preflight Weather Report at RigStat Internet Portal & Live View

The client or representative can securely view the vessel PWR at the RigStat Portal at any time. The PWR data fields are automatically updated with the most recently received sensor information. RigStat also supports remote Live View: the capability to securely access the vessel HMS screen for real-time viewing.

Please contact RigStat at Office@rigstat.com for further information or a demonstration.