

Need More Information?

Visit our online resources for more detailed specification, request information, technical help and more:

- **Main Website:**
<http://www.southernavionics.com>
- **Online Store:**
<http://shop.southernavionics.com>
- **Client Support Site:**
<http://savionics.us.cloudlogin.co/wordpress/>



ISO 9001:2008 Certified

P.O. Box 5345

Beaumont, TX 77726-5345

Phone: +409.842.1717

Phone: 1.800.648.6158 (Toll Free in the US)

Fax: +409.842.2987

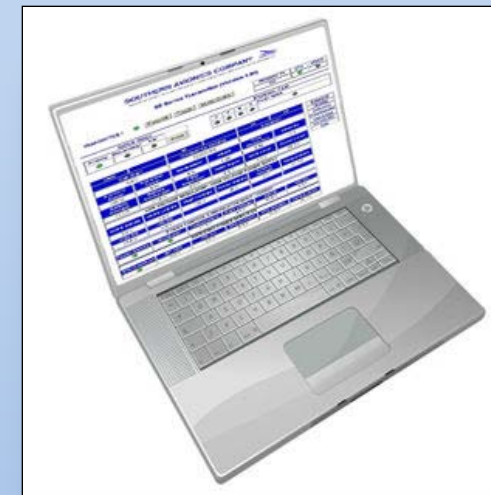
sales@southernavionics.com



Southern Avionics Company



Southern Avionics Company



The first commercial offshore beacon was invented and installed by Southern Avionics in 1963. Since that time, we have built around 10,000 offshore and onshore NDBs. Because of our superior product quality and commitment to continuous customer satisfaction, we remain the most trusted and user-friendly name in non-directional beacon navigation.

SE Series: Offshore NDB Transmitters Helicopter Homing Beacon

Dual Systems

Made for Long-Term, Outdoor Use

Ethernet ready for Full System Monitoring and Control

New Features: API, Logging up to 300 lines, Alarm Relay Contacts, Gas alarm with Shut Down



SE125 Single - IP66 Enclosure

Dimensions: 24 in. (61cm) H x 21 in. (54cm) W x 19 in. (48cm) D
Weight: 59 lbs. (27kg)



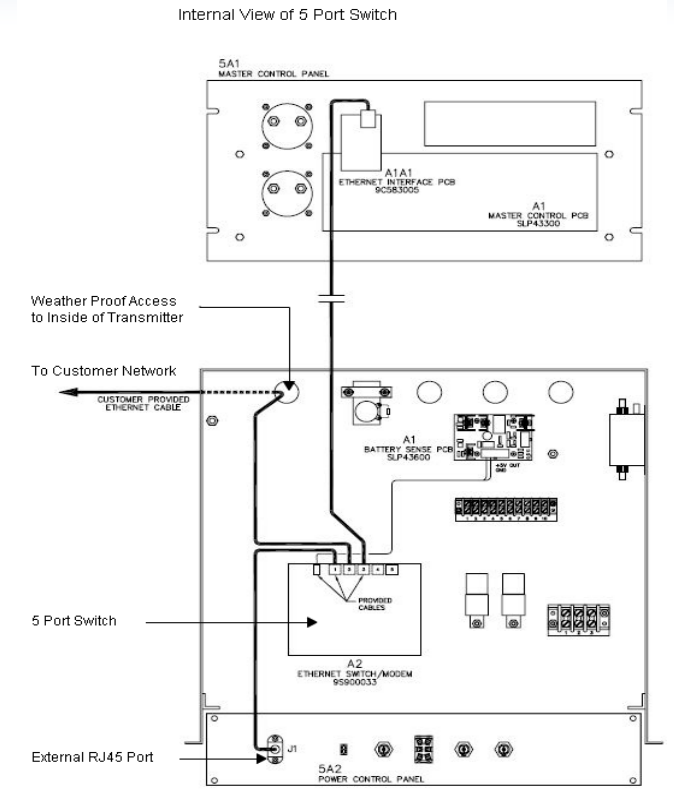
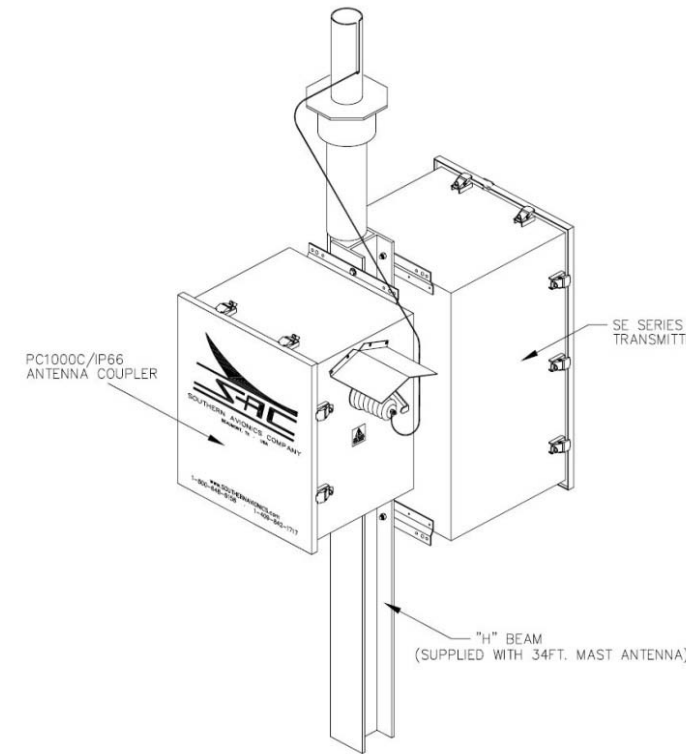
SE125 Dual - IP66 Enclosure

Dimensions: 33 in. (84cm) H x 21 in. (54cm) W x 19 in. (48cm) D
Weight: 99 lbs. (45kg)

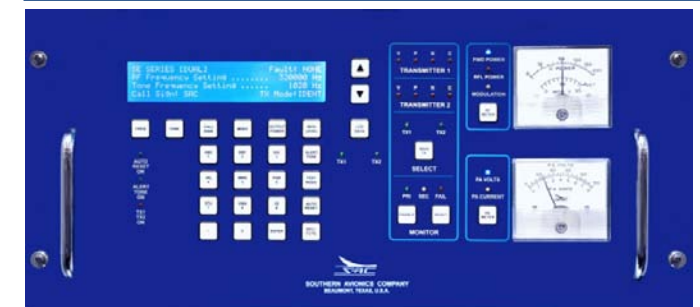
Feature	Specification
Frequency	190-650 kHz digitally synthesized (Optionally 190-650, 650-1250, 1500-1800 kHz)
Frequency Tolerance	5ppm TCXO Oscillator standard (Optional 1ppm TCXO)
Power Output	10 – 125 Watts
Noise and Hum Levels	More than 40 dB below the carrier level
Spurious Emission	More than 65 dB below the carrier level
Type of Emission	NON, A2A, A3E
Modulation	Switching modulator/regulator, 0-95%, internal 400 or 1020 Hz, eight baud Keyer, 8 character Identifier max length
Input Power	100 – 264 VAC, single phase 47 – 63 Hz; Optional 48 VDC or both with switch over to batteries
Antenna Connection	Type-N female output
Display	40 character by 4 line LCD
Metering	Power output, reflected power, percent modulation, PA voltage, PA current
Monitoring	Automatic shutdown if tone, modulation, power or VSWR drift beyond a preset level (with dual, it transfers to secondary transmitter)
Interface	Barrier block connector for user selectable RS232/RS485 for Remote Control Unit. Optional RJ-45 Ethernet Connection
Working Conditions	-40°C - +55°C, 0 – 95% Humidity

The SE unit provides simplified set-up & maintenance procedures, comprehensive BITE allowing LRU identification, and full Ethernet capability accessible by both internal and external RJ45 connections. Connect a PC directly at the transmitter or through any of our other connection options. The SE NDB transmitter comes standard with an embedded server called Web Watch. Web Watch enables the user to control and monitor the transmitter on a laptop or PC.

The SE125 IP66 Transmitter comes standard with an internal 5 Port Switch. There are two access points to the Switch. The first is a convenient external RJ45 port located on the front of the transmitter. The second is weather-proof access hole through the bottom of the transmitter. The 5 Port Switch can be used to connect to a WiFi Network, Land Line Network, or any of our Ethernet Control and Monitoring Options or Remote Control Unit Connection Options.



Installation Option for the SE Transmitter and ATU (left)
Remote Control Unit: full functionality and operation; to be installed in a radio room, etc. (below)



Antenna Tuning Unit Options

PC1000C/3 Antenna Tuning Unit



Dimensions: 24 in. (61cm) H x 28 in. (72cm) W x 17 in. (44cm) D
Weight: 39 lbs. (18kg)

Feature	Specification
Input Impedance	50 Ohms
Load Impedance	2-30 Ohms resistance, 200-1500pF capacitance
Frequency	190 - 650kHz, 200 - 1500pF load
Power Input	Up to 500 Watts, 200 Watts continuous
Operating Conditions	-50°C - +70°C; relative humidity 0-100%; high salinity for offshore; IP66 certified
Power Requirements	DC control voltage (SAC transmitter)

Antenna Options

- Helipad Antenna
- Helipad Antenna to CAP437
- 8m Whip Antenna
- 10m Whip Antenna
- 34 ft. Mast - Offshore

