



## SA100 Dual - IP66 EC

Part Number: SLF30526

SPECIFICATION SHEET

5000 Belmont, Beaumont, TX 77707  
 Phone +409.842.1717/1.800.648.6158 (Toll Free in the US)  
 Fax +409.842.2987  
 sales@southernavionics.com



### Application:

The SA100 Dual, IP66 EC transmitter has an adjustable output power up to 100 Watts. The SA100 Dual consists of two independent SA100 transmitters and an Automatic Transfer unit housed in a single cabinet.

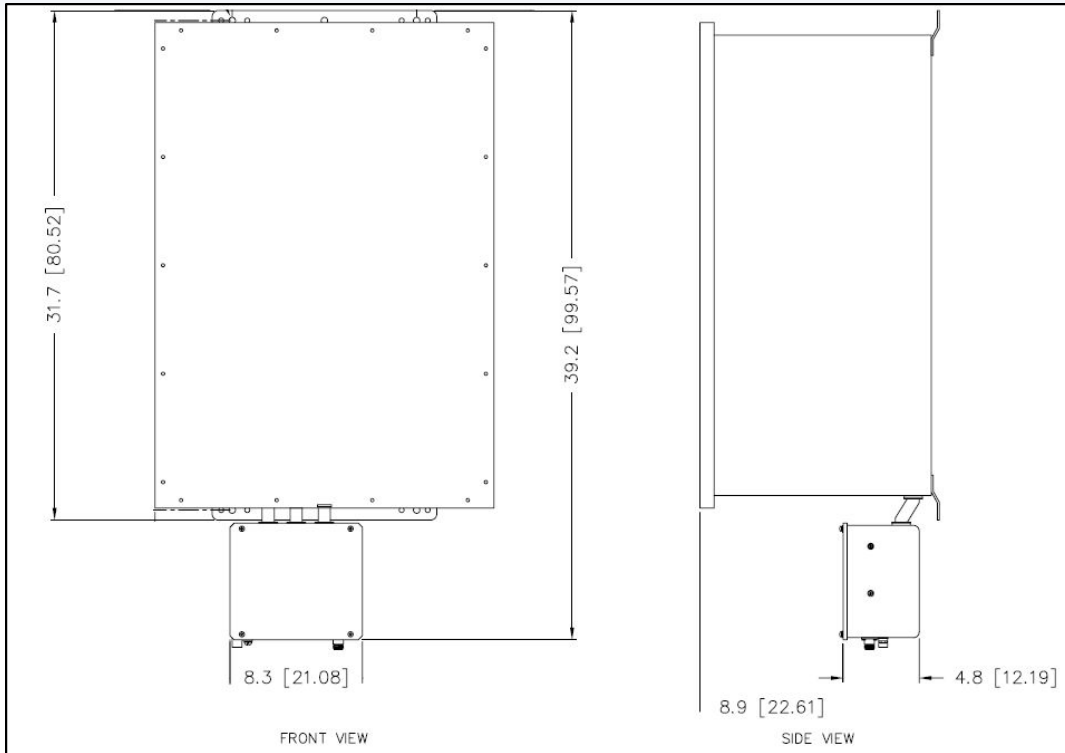
The exciter portion consists of a crystal controlled 190 - 535 KHz synthesizer, a dual tone (1020Hz or 400Hz) generator, a DIP switch programmable Morse Code keyer, a monitor circuit and an optional voice processing circuit.

The power portion consists of an output filter, a switching power amplifier, switching modulator/regulator and power supply.

*Complies with the Essential Requirements of Council Directive 1999/5/EC on Radio Equipment and Telecommunications Terminal Equipment. Meets all applicable requirements of ICAO, FCC, and FAA. CE mark and ANATEL Certified.*

FEATURE	SPECIFICATION
Frequency	190 - 535 KHz
Power Output	Carrier power into 50 Ohms continuously adjustable 25 - 100 Watts (100 - 400 W PEP)
Spurious Emission	More than 63 dB below the 100 Watt carrier
Type of Emission	NON, A2A, A3E (Optional), GID (with optional GPS beacon modulator, or any combination)
Modulation	Switching modulator/regulator provides high level modulation 0 - 95 percent
Noise and Hum Level	More than 40 dB below the carrier level
Input Power	115/230V $\pm$ 15%, single phase 50 - 60 Hz. 24 VDC. Nominal input power is 180W at 100W carrier and tone keying at 95% modulation
Metering	Power output, reflected power, PA voltage, PA current, percent modulation, audio input level
Monitoring	Transmitter shuts down with loss of tone, drop in modulation below an adjustable value, or continuous tone, or when power falls below an adjustable value, or when VSWR rises above an adjustable value
Operating Conditions	-50°C - +70°C, 0 - 100% relative humidity, non-condensing, high salinity
Enclosure	IP66 certified cabinet
Height	39 in. (100cm)
Width	21 in. (54cm)
Depth	15 in. (38cm)
Weight	110 lbs. (50kg)

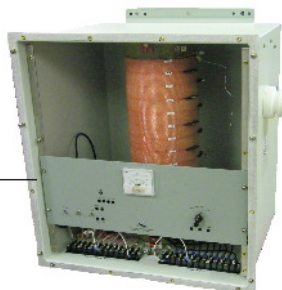
\*Information provided is subject to change without notice



**SA100 Dual-IP66 EC**



**Remote Control Unit (SLE34710)**



To Antenna



**Antenna Tuning Unit**

**Offshore Antenna Options**

- Helipad Antenna
- 34 ft. Mast Antenna
- 8m and 10m Whip Antenna

**Land Antenna Options**

- Mast Antennas
- Symmetrical T Antennas

**Services and Options**

- Installation
- Installation Kits
- Equipment Training
- Site Acceptance Tests
- Factory Acceptance Tests
- Extended Warranty
- Remote Control Unit
- Load Center/Battery Charger
- Test Equipment