



34 ft. Mast Antenna - Land

Part Number: SLF10014

SPECIFICATION SHEET

5055 Belmont, Beaumont, TX 77707
 Phone +409.842.1717/1.800.648.6158 (Toll Free in the US)
 Fax +409.842.2987
 sales@southernavionics.com



SAC 34 ft. Land Mast
 Antenna in Samoa

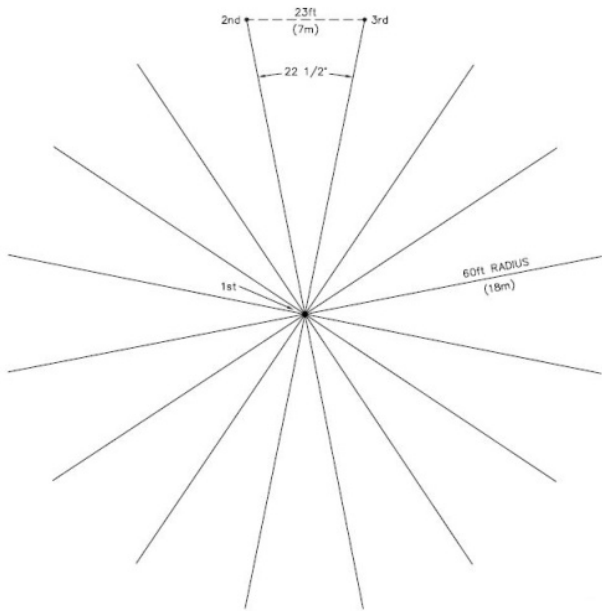
*Information provided is subject to change
 without notice

FEATURE	SPECIFICATION
Frequency Range	190 - 1800 kHz (190 - 625 kHz using "B" section loading coil and 625 - 1250 kHz or 1500 - 1800 kHz without "B" section loading coil)
Power Rating	400 W PEP
Capacitance	200 pF
Polarization	Vertical
Pattern	Omnidirectional
Electrical Length	27 ft. (8m)
Height	34 ft. (10m)
Weight	223 lbs. (101kg)
Wind Rating	100 mph (161km/hr)
Overturning Moment	2000 ft.-lbs. (2714 N-m), land only
Finish	Anodized aluminum and fiberglass tubing and galvanized steel "H" beam
Temperature Range for Working Conditions	-50°C - +70°C
Recommended Ground Counterpoise - for good ground	Provided - 1100 ft. (335m) of 10 AWG Soft Drawn Bare copper, ½ in. (12.5mm) Copper Solder Terminal, 17 - ½ in. (12.5mm) Ground Rod Clips, 17 - ½ in. (12.5mm) x g ft. (1.8m) Copper Clad Ground Rods

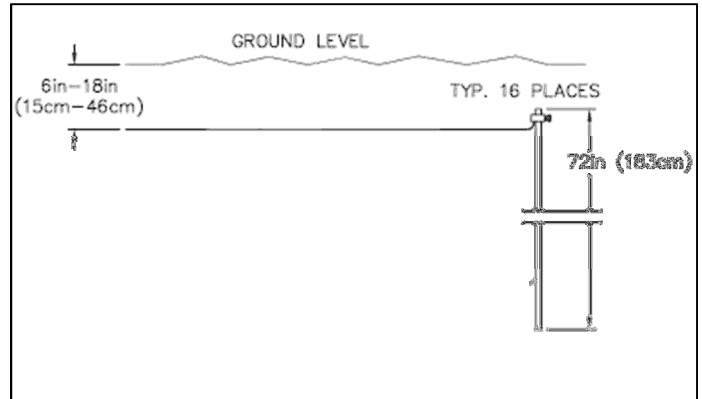
Application:

The 34 ft. self-supporting LF/MF antenna has capacitive top loading and inductive center loading. It is designed for use where land area is at a premium and low frequency operation is desired. It is easy to install with one person.

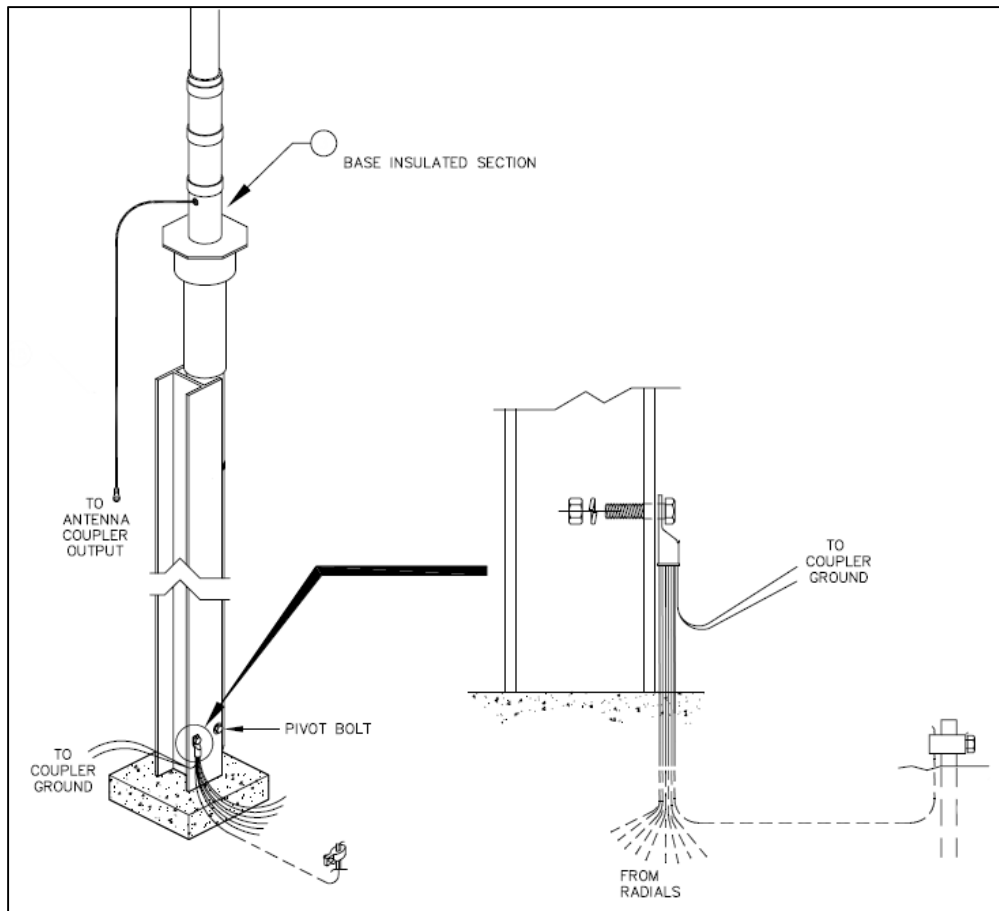
A counterpoise system is comprised and designed to provide 16 radials is designed to provide optimal range with good ground conditions. The installation site should be a clear, flat area. Poor ground conditions, such as sand or rocks, will require enhanced counterpoise arrangements. SAC can provide site planning assistance to correctly configure your equipment for optimal performance.



16 Radial Counterpoise System



Underground View



Counterpoise Connection Diagram