

Highlights & Happenings



Toni L. Eaton, RN, BSN, MS
President & CEO

Welcome Message from Toni Eaton, President & CEO

Over the last 6 years, I have had the privilege of working with the Old Colony Hospice team of caring, compassionate and highly skilled people dedicated to providing the highest quality care to patients and families in our community. When I was asked to step into the role of Interim President and CEO in April of 2011 and then the permanent position in November of 2012, I was honored and very excited for the opportunity to lead our organization through the challenging times that we are facing in health care today.

Given these challenges and pressures, it is more important now than ever, for patients to receive the quality care they need and deserve. Our strategy, as the leader in end of life care, is to continue to provide high quality care and retain our reputation of excellence, integrity and innovation. We are proud to serve the people in our communities with compassion, dignity and a

passion for what we do. We are committed to excellence in our delivery of care.

I am pleased to introduce the first issue of our new and improved newsletter. It better reflects the vibrant new leadership and cutting edge programs we have put in place as we continue to move ahead as a recognized leader in hospice and palliative care.

We could not move forward with the work that we do without your support. Whether you are a patient, family member, health care partner or friend in the community, we value our relationship with you and we will strive to exceed your expectations.

We welcome your interest in Old Colony Hospice. Please feel free to contact me, I look forward to hearing from you.

*Toni L. Eaton, RN, BSN, MS
President & CEO*

Social Media This Issue 4

Message from CEO 1

Palliative Care 1

Hospice: Getting Beyond the Word 2

Volunteer Voices 2

Feeling God's Grace 3

A nurse's story

Board of Directors 4

Service Area Expansion 4

Upcoming Events 4

Palliative Care Consultation Service

The Palliative Care Consultation Service of Old Colony Hospice supports patients and families coping with complex illnesses like Congestive Heart Failure, Cancer, Chronic Obstructive Pulmonary Disease (COPD) and many others. Palliative Care Consults can be provided simultaneously with curative treatments. Studies show that the use of Palliative Care can dramatically improve quality of life for patients dealing with life limiting illnesses and symptoms of advancing disease. Our team of Palliative Care Consultants includes Nurse Practitioners, with advanced practice certification, and Physicians who are board certified in Palliative Care in addition to Family Practice and/or Internal Medicine. The Palliative Care Consultant can help patients and their families participate in discussions that increase understanding of the disease process and treatment options. They focus on providing patients with relief from the symptoms, pain and stress of serious illnesses in order to improve the quality of life for both the patient and the family. We are also happy to offer Palliative Care in our community. Comfort Pathways, our home palliative care program, is available in collaboration with the Brockton Visiting Nurses Association, Partners Home Care and many Skilled Nursing Facilities in the area.



Madeline O'Reilly, RN, BS, MS
Vice President of Clinical Services

Hospice - Getting Beyond the Word

What do you think when you hear the word "hospice"? Many think hospice is a place rather than a service. Others think hospice care is only for cancer patients. Most believe that calling hospice means they are giving up hope and even withholding care. These are all misconceptions.

So what is Hospice Care? Hospice is a team approach to care to help patients and families focus on life when they are faced with life-limiting illness, so that each day may be spent with dignity and surrounded by family and friends. Caring for the patient does not end with hospice, however the focus of

care does change. Hospice care may be appropriate when the focus changes from aggressive treatment with the hope of a cure later, to pain and symptom management and care to ensure the highest quality of life for the patient and family right now. Hospice care is available for the last six months of life.

The Hospice Team is comprised of: a Medical Director; specially trained Nurses to care for patients and coordinate their care; Hospice Aides to help with personal care; Social Workers to help the patient and family with emotional difficulties and future plans; Spiritual and Bereavement Counselors to provide

support; and Volunteers to visit patients so that caregivers can take a break. Medications and equipment---a hospital bed, wheelchair---are delivered right to the patient's home.

Old Colony Hospice provides expert care, compassion and much needed help to patients and families during a very difficult time at the end of life. We need to get beyond the word to a place where we can embrace the concept of hospice care and accept the wonderful gifts it can offer, because we will all be faced with the end of life at some point during our amazing life journeys.

Old Colony Hospice Staff

"A sincere thank you for the tender loving care given to my husband during the last month of his life. I always knew that help was only a phone call away. His assigned nurse and aide were exceptional along with all who visited our home. My children and I can only say a sincere 'Thank You'. We love you all."



Volunteer Voices



Chris Finelli, Volunteer Coordinator and long time volunteer Roberta Straus

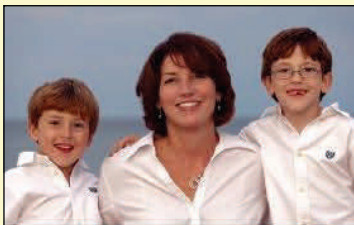
Old Colony Hospice Volunteers continue to be busy helping in the office, visiting patients, and preparing for our annual special events. Although our Volunteers lead very busy lives, they continue to dedicate their time and talent to OCH by providing companionship, support and respite to patients and their families.

Congratulations to: Steve Ioanilli— recent marriage and expecting a child
Kathryne Bernier—recent marriage and expecting a child
Judy Karll—recent birth of her granddaughter, Lyla

Special thank you to Bethany King, who has been visiting patients and helping with the Bereavement Program as part of her internship. Upon her graduation from Eastern Nazarene College with a Master's Degree in Counseling, Bethany will have a few months to prepare for the August birth of her first child.

OCH extends a warm welcome to our newest patient-care volunteers:
Alan Jacobson, Cathy Kligler, Marie Batson, Denise Ivey, Rebecca Schorin, & Barbara Theodore.

Feeling God's Grace - A Hospice Nurse Puts Her Story in Words



When Michaelynn Kernan, RN (pictured left with her two sons), tells people she is a hospice nurse, she gets one of two reactions. People either share personal details of how hospice touched their lives or they cry, recalling the care and compassion of a hospice nurse during an emotionally difficult time for a loved one. In response, Kernan, who has worked for Old Colony Hospice in Randolph since 2008, tells them what she gets from being a hospice nurse. Below is an excerpt from her story:

It is often just a moment in time, when you know that you are in the right place at the right time, doing the right thing. You have to watch for it.

Hospice nurses witness some of the most difficult situations people can face. We see family members physically caring for loved ones in ways they never thought they could. We watch as caregivers give their loved ones permission to go. We listen to the feelings that come with losing someone, the frustrations, and the worries. Just by listening, we help. We see the beauty in love that has lasted a lifetime.

Our nursing is simple. When hope for a cure is gone, nursing changes from a practice of very technical skill, to simple symptom management. There is something very "Florence Nightingale-ish" about Hospice Nursing. It is personal and there is beauty in its simplicity. We do whatever it takes to bring comfort and peace to our patients and their families. Our nursing is less of a science and more of an art.

I work in the nursing home division where many patients have dementia, a long process of loss for both the patients and their families. A person with dementia progressively loses memory and function. They slowly lose their abilities to drink, eat, talk, walk, think and remember. At the end, the ability to smile is lost. This is a devastating progression for the patient and especially for the families. The patient we see is much different from the person they once were. This is where the simplicity and beauty of hospice nursing comes into play. We have to imagine the person as they once were, to read the signs they give us as to what is going on in their bodies. A person with dementia cannot tell you that their left leg hurts, we have to read the signs, they cannot tell you that they are nervous or frightened. They can't tell you that they are hungry or that they just don't care about eating anymore. We have to read those signs.

I have a patient, Eleanor, with end stage dementia. She has been my patient for almost one year now and her decline has been slow. Lately, she sleeps most of the time and does not even smile. Recently, a volunteer, Jackie, came to the nursing home to see her friend Eleanor. Their friendship goes way back as they have helped each other through tragedies and losses before. Jackie strokes Eleanor's arms and talks to her. The amazing thing is that Eleanor, who responds to very little now, smiles from ear to ear when Jackie is with her. Eleanor must remember her gentleness and comforting words, because she is soothed in a way that no amount of medicine could provide.

This is one of those moments when you feel God's grace and know that you are in the right place at the right time. As hospice nurses, we give families the opportunity to be present at this moment of grace. We give patients the opportunity to pass from this life with the full support, both physical and emotional, of their loved ones. They are surrounded by family and supported in prayer, in song, in touch, in tears and in presence. And you know that that love does not die when the patient dies.

That is where the special moments are and that is why I am a hospice nurse.

Michaelynn Kernan, RN, is a member of the care staff and she shared these remarks at the annual Circle of Remembrance Ceremony sponsored by Old Colony Hospice. Her story reflects the experiences our staff has with our patients and their families.

Thanks to the generosity of donors like you, who support our Annual Fund, Old Colony Hospice is able to make a difference in the quality of care we provide. For more on how we implement our mission, and to read Michaelynn's full story, visit www.OldColonyHospice.org.

To make a tax deductible contribution to the 2012 Annual Fund, please use the enclosed envelope or make a donation online.

Old Colony Hospice & Palliative Care

247 North Main St. Suite 400
 Randolph, MA 02368
 (800) 370-1322 | (781) 341-4145
 WWW.OLDCOLONYHOSPICE.ORG

Officers

James J. DeCoursey, Chairman
 Martin McGovern, Vice Chairman
 Nancy Maloney, Clerk
 Daniel McAuliffe, Jr., Treasurer

Directors

Toni L. Eaton, President & CEO
 Theodore D. Ciolkosz, Jr.
 Patricia Gallagher, CPA
 Jack Manning, CPA
 Joan Mikalauskas
 Sandra Owen, MBA
 Linda Port, Esq.
 Richard Samaha, MD, PhD
 Rev. George H. Welles, Jr.
 Patricia Williams



Stay connected to Old Colony Hospice through:



Visit our Blog:
<http://www.oldcolonyhospice.org/blog/>

OCH Expands its Service Area

We are very excited to announce that effective March 1, 2012, Old Colony Hospice is expanding its service area, allowing us to care for patients in Hyde Park and Dorchester. This is a natural extension of our work with Milton Hospital and Medical Practices in the Milton/Quincy area.



SAVE THE DATE



10th Golf Classic
 Monday, August 20, 2012
 Check in: 11:00am
 Start 12:30pm
 Thorny Lea Golf Club,
 Brockton, MA

Circle of Remembrance
 Sunday, October 21, 2012 | 2:30pm
 Stonehill College, Easton, MA

Educational Symposium
 Coming in November!

Thank you to all who participated in our
14th Memorial Walk and our
All That Jazz Brunch.
WE APPRECIATE YOUR SUPPORT!

