



Swagelok Northern  
California Services

**Swagelok**  
Swagelok Northern California

# Custom Solutions

- All assemblies built by Swagelok certified installers
- Assemblies backed by Swagelok limited lifetime warranty
- Technical & industry knowledge ensure smallest footprint
- Only the highest quality components
- 2D and 3D CAD capabilities
- Pressure or leak testing before delivery

Sales & Service Center: 3393 W Warren Ave Fremont, CA

Phone: 510.933.6200

More: [NorthernCal.Swagelok.com/Services](http://NorthernCal.Swagelok.com/Services)



The Handbook of  
**Custom  
Solutions**

Swagelok Northern California  
Fremont and Santa Clara, CA  
510-933-6200  
<http://northerncal.swagelok.com/>

**Swagelok**<sup>®</sup>

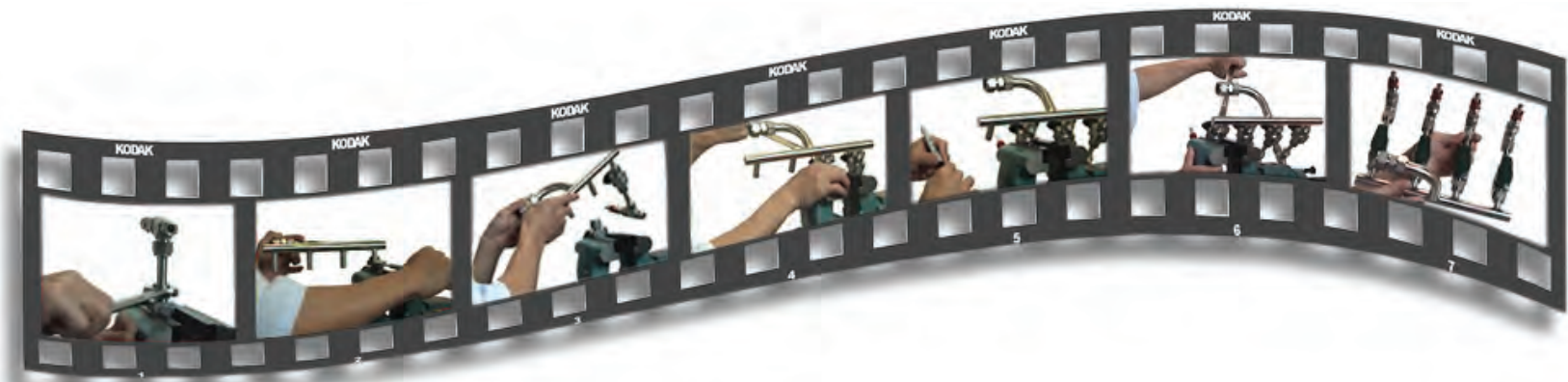




# ***“If you can conceive of it, or sketch it ... We can build it.”***

Any business that depends on fluid system assemblies for OEM, process, instrumentation, or maintenance applications occasionally may need a hand to boost output or complete a job more quickly. We offer a prompt, effective way to ramp up output without ramping up the cost of internal staff. How? Our team of certified technicians can build assemblies or subassemblies using Swagelok® components, as well as other system components, to meet your design specifications. From simple to complex, we have the skills, tools and products to ensure you have one less thing to worry about — because:

- All assembly work is performed by Swagelok certified installers
- All assembly work is backed by the Swagelok limited lifetime warranty
- Our technical support and fluid system component knowledge assures the smallest footprint and most economical design
- We offer short lead times
- We use only the highest quality components
- Our 2D and 3D CAD capabilities help ensure the design meets your dimensional expectations
- Completed assemblies can be pressure or leak tested before delivery



# From Concept to Completion

***“It’s simple, your next assembly is just a phone call away”***

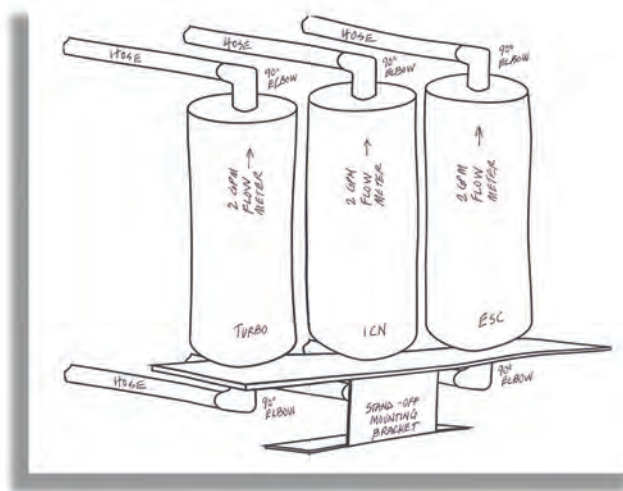
**Your Idea** - Send us a simple drawing by email or fax, or give it to your Account Manager and include the specifications for the assembly that you need. Or you can give us a call with your specifications. We'll take it from there.

**Clarification** - We will communicate with you through all phases of the design process to ensure that all questions are answered before our drawing and technical quotations are produced.

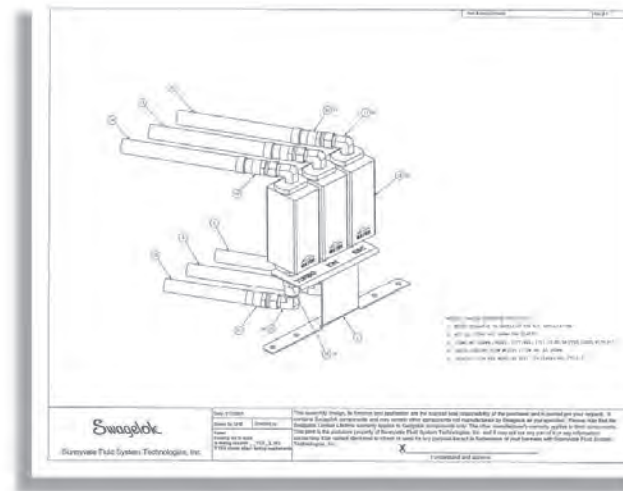
**CAD Drawing and Technical Quotation** - We will provide a sales or CAD drawing of your assembly, a technical quotation, firm pricing and delivery information.

**Assembly** - Next we will pull from our well stocked inventory and order any additional parts needed for the assembly. All fabrication work will take place in a clean, well equipped assembly area. Or, if your application demands it, assembly will be completed in our Class 100 Clean Room.

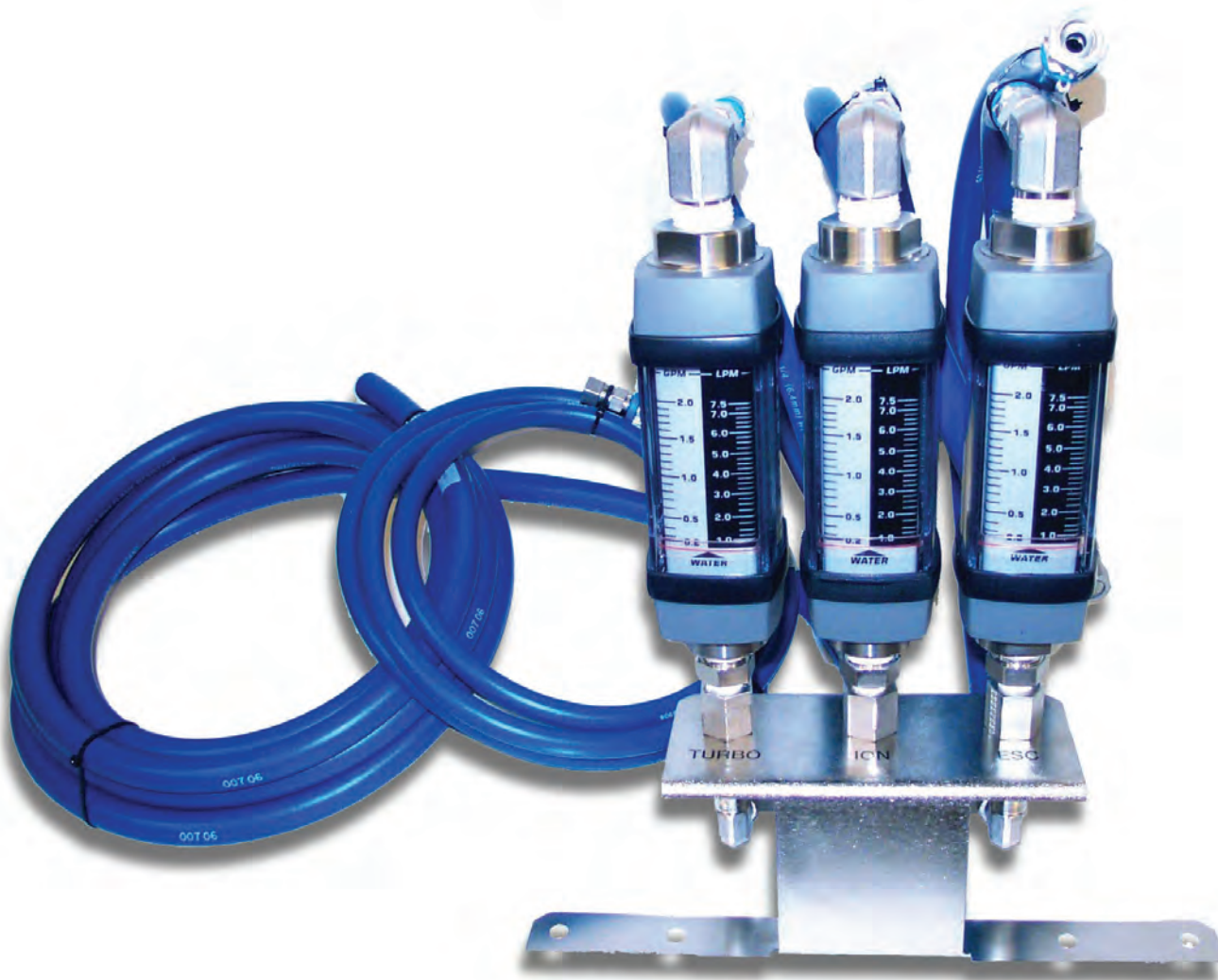
**Q.A. and Testing** - The completed assembly will go through a thorough Quality Assurance and Testing process before it's shipped to you. Snoop liquid leak detection, pressure decay, hydrostatic and helium leak testing are available.



**Sketch**



**Print**



***Finished product***



# Capabilities



## *Hose Fabrication*

- Cutting, Crimping, Swaging and Labeling
- Leak Detection and Pressure Testing
- PTFE, Fluoropolymer, Rubber, Thermoplastic, and Metal Hoses
- Smooth Bore or Convuluted Core Hoses



# Orbital Welding

- Swagelok Orbital Welding Systems
- Capable of 1/8 inch through 4 inch tube sizes
- ASME Section IX Certified Welders

General Industrial

Bio-Process

UHP Semiconductor

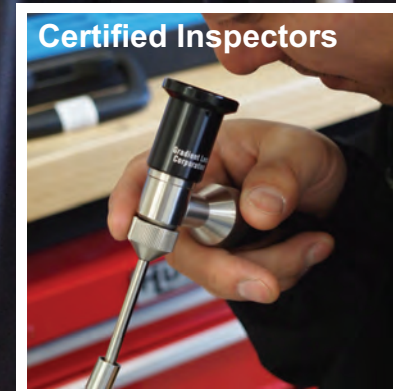
- ASNT Certified Weld Inspection

Swagelok M200 Power Supply

Orbital Welding



Certified Inspectors





## ***Tube and Pipe Preparation***

- Precision Tube Cutting and Deburring
- Tube Facing for Weld Preparation
- Tube Bending Service
- Automatic PTFE Pipe Thread Tape Wrapping
- Hydraulic and Pneumatic Ferrule Swaging



*Precision cold-saw tube cutting*

# Rely on our elite team and specialized tools

*“Our specially trained team of Assembly Technicians have the training, tools and knowledge to deliver complete fabricated assemblies that will exceed your expectations.”*

## Swagelok Certified Capabilities:

### Mechanical Connections

- Swagelok® Tube Fitting and Tube Adapter Assembly
- VCR® Face Seal End Connection
- Threaded Fitting Assembly

### Hose Assemblies

- PTFE and PFA Core
- Thermoplastic
- Rubber Core

### Automated Ball Valve Assembly

### Services

- Industrial Pressure Gauge Liquid Filling
- Plastic Tube Flaring

### Tube Bending

### Electrical Wiring Termination

### Orbital Welding

- General Industrial (ASME Boiler and Pressure Vessel Codes (BPVC) Section IX)
- Food Beverage and Dairy (per AWS D18.1 - 3A); or Bio-Processing, Pharmaceutical or Personal Care products (per ASME Bio-Processing Equipment (BPE) Standard)
- UHP Semiconductor (per Semiconductor Equipment and Materials International (SEMI) F78 for GTAW of Fluid Distribution Systems in Semiconductor Manufacturing Applications or equivalent)
- Weld Examination - Trained to the guidelines in ASNT SNT-TC-1A for Visual Testing (VT)

### Leak Testing

- Bubble Testing by means of liquid leak detector or immersion
- Helium Leak Testing with Mass Spectrometer
- Pressure Change Measurement (Pressure Decay)



# Swagelok Certified Assembly Technicians

All of our Assembly Technicians are required to complete a comprehensive array of specialized training programs developed and administered to a global Swagelok standard. These courses are a part of the Swagelok University training curriculum. Each certification class participant must demonstrate proficiency through completion of a written exam as well as practical exercises. All participants must score 100% on both the written and the practical exam before being issued a certificate of completion. Additionally, all of our Technicians are recertified regularly to confirm competency.

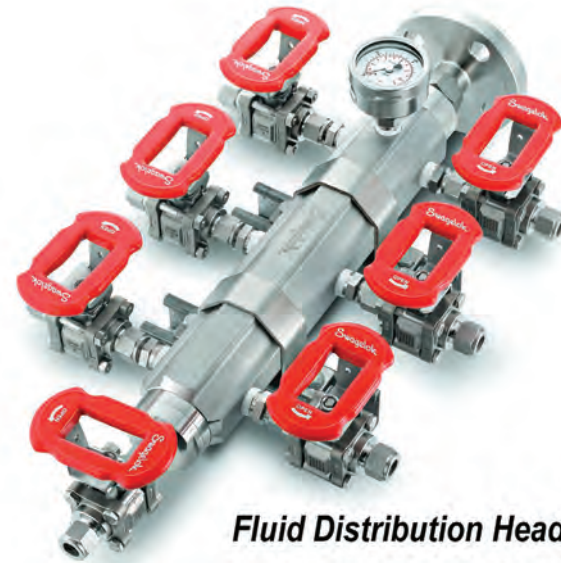


# Swagelok Pre-Engineered Subsystems

Take the highest quality components. Combine them with industry-leading engineering and technology. The result is fluid system assemblies like no other. That's what you get with Swagelok Pre-Engineered Subsystems (PRESS). Swagelok now offers a series of predesigned and preassembled subsystems for use in all types of plants and facilities where fluids are being processed. You can use Swagelok pre-engineered subsystems to create fully documented fluid sampling and control systems and bring consistency to your operations. Easy to install and operate, these subsystems offer the high quality and support you expect from Swagelok.

You trust Swagelok components; now trust our experts to create the best fluid system assemblies, ready to install. The following subsystems are currently available (enter literature MS part number into Google search for more information):

- **Field Station Module** – A field station module reduces process gas pressure before transporting it to an analyzer. Transporting a gas sample at low pressure offers faster analyzer response time, less condensation, and a safer work environment. (MS-02-359)
- **Fluid Distribution Header** – Fluid distribution headers are common components used in a variety of gas and liquid applications. They provide a flow path while allowing multiple outlets, acting much like a large branch fitting. They are characterized by an inlet on one end, a drain on the other end, with multiple outlets on the sides. (MS-02-358)
- **Calibration and Switching Module** – To ensure proper function of an online analyzer and to protect the equipment for maximum uptime, all process samples must be conditioned to meet an analyzer's requirements. Conditioning includes verifying that a sample is being inserted into the analyzer at the appropriate pressure, temperature, flow, and filtration level. (MS-02-360)



*Fluid Distribution Header*



- **Fast Loop Module** – Fast loop modules are designed to handle high flows in sample transport lines to reduce time delays for online analyzer systems. Located at the analyzer shelter and offering a bypass, the fast loop module can isolate the sample system and introduce a purge gas for system cleaning. They extract a sample through a filter while using the high flow rate of the bypass to keep the filter element clean. (MS-02-361)
- **Sample Probe Module** – The oil, gas, and chemical industries use process analyzers to measure the concentration of key components in their gas and liquid streams. These analytical measurements must be reliable to maintain precise process control, which helps reduce costs and improves quality and safety. To ensure a useful analytical measurement, it is critical for extracted samples to be representative of what is in the process pipe and to reach the analyzer in a timely manner. Using sample probes in conjunction with sample probe valves can improve safety, sample purity, and timeliness. (MS-02-425)

## Kitting and Custom Labeling

We can help reduce the cost of doing business by offering an array of customized component packaging and labeling options. We can help eliminate additional handling at your site by pre-packaging components to your specifications. This service can help reduce packaging waste and your manpower requirement, reduce warehousing costs, and increase the efficiency of your assembly process. If you require Ultra High-Purity components to be pre-packaged for use inside a UHP clean environment, we can package your kits in our cleanroom.

In addition to kitting we can create custom labels on the components or on the outside packaging tailored to meet your specific needs.



*Perma-Tag® Hose Labels*

# Design and Engineering Support

Let our knowledgeable team collaborate with you to optimize the performance of your next fluid system design. CAD and sales drawings are offered as part of the quotation and sign-off process so there are no surprises. This ensures that we quote and build exactly what you are looking for. Our 2D and 3D CAD capabilities help insure the design meets your dimensional expectations.

**Value Impact** – An OEM manufacturer requested our help in designing and building a new gas panel. They provided us with a simple schematic and a BOM. With the assistance of our CAD Design Engineer we improved the BOM to substitute the existing build with Swagelok components offering a savings of over \$3,000 in component cost alone. In fact, the only thing on the BOM that stayed the same was the purifier. As an added bonus, our help with component selection saved our customer an additional \$1,000 for a total saving of \$4,000.00.



## Non-Swagelok Components



We recognize that not every fluid-system need can be satisfied by a Swagelok product, so if your system design requires non-Swagelok components, rest assured you can rely on our ability to source components from top-tier, non-Swagelok suppliers and provide you with a turn-key solution.

We have established working relationships with key component suppliers, so if we don't have it, chances are we are already working with the people who do.



# Lock in the best value

**Assemblies of the Highest Quality** – Every step in the manufacturing process is governed by our quality program and a specific set of SOP's. Our products are recognized throughout the world for quality and performance. Every member of our assembly team has successfully completed comprehensive training.

**Reduced Waste** – You purchase only what is needed to get the job done. There is no need to build an inventory of components at your site to meet your build schedule. Scrap and non-conforming components are no longer issues you need to address.

**Reduced Rework** – You only accept and pay for assemblies that meet your specifications.

**Reduced Cost** – By working directly with Swagelok Northern California, an authorized Swagelok Service Center, you avoid the “mark-ups” and the administrative costs associated with procuring Swagelok products through middle-man suppliers.

**Reduced Paperwork** – You place only one purchase order for a complete assembly rather than several orders to acquire the system components. We eliminate the need to negotiate contracts for specialized labor. You work with a single supplier rather than dealing with multiple sources to complete your project.

**Accurate Budgeting** – Our team of knowledgeable project managers will provide you with an accurate quotation that reflects the true cost of the completed assembly including a realistic delivery date. We will eliminate your worries about unanticipated cost overruns or project delays. Modularization enables you to “lock in” the cost of an assembly.

**Peace of Mind** – You can be sure that the assembly will be ready when you need it, and it will be exactly as you expect.

# Quality

***“Be our customer’s favorite story by understanding their needs and striving to exceed their expectations through the utilization of our quality system and a passionate commitment to continual improvement.”***

Swagelok Northern California demonstrates a steadfast commitment to quality, has earned specialized Swagelok assembly certifications, and complies with global quality systems, such as ISO. Every Custom Solution fabricated by Swagelok Northern California meets consistently high standards of quality. Our internal documentation and quality processes comply with ISO 9001:2008. In addition to our ISO 9001:2008 certification we have also earned the Swagelok Quality System (SQS) certification.

As we continue to grow and expand our operations, specifically within our custom fabrication and assembly group, we are doing everything possible to ensure we consistently provide the highest level of products and services that you have come to expect.

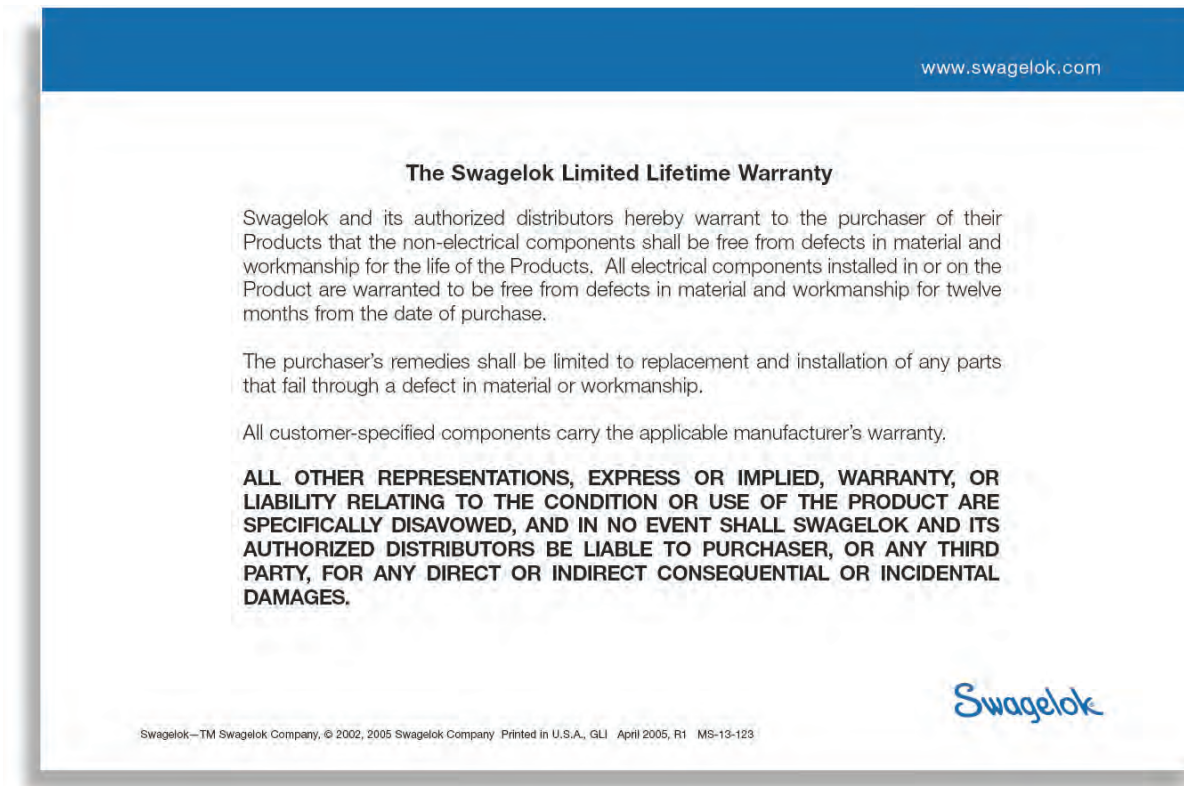




# Warranty

***“As a testament to the quality and reliability the name Swagelok represents, our components and assemblies are supported by the industry leading Swagelok Warranty .”***

All of the Swagelok components and the assemblies (1) are supported by the industry leading Swagelok Warranty. The Swagelok Limited Lifetime Warranty covers all work completed by Swagelok Northern California.



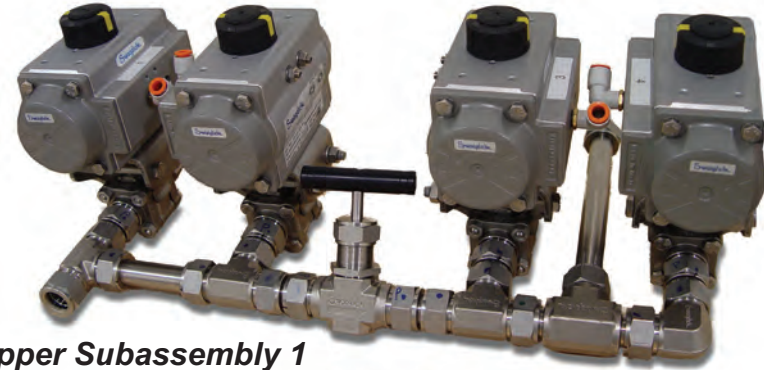
1. Only components manufactured by Swagelok in the assemblies are covered by the Swagelok warranty. All non-Swagelok components are covered by the applicable warranty(s) of said component manufacturer.

# *We have the skills, tools and components*



**Water Box**

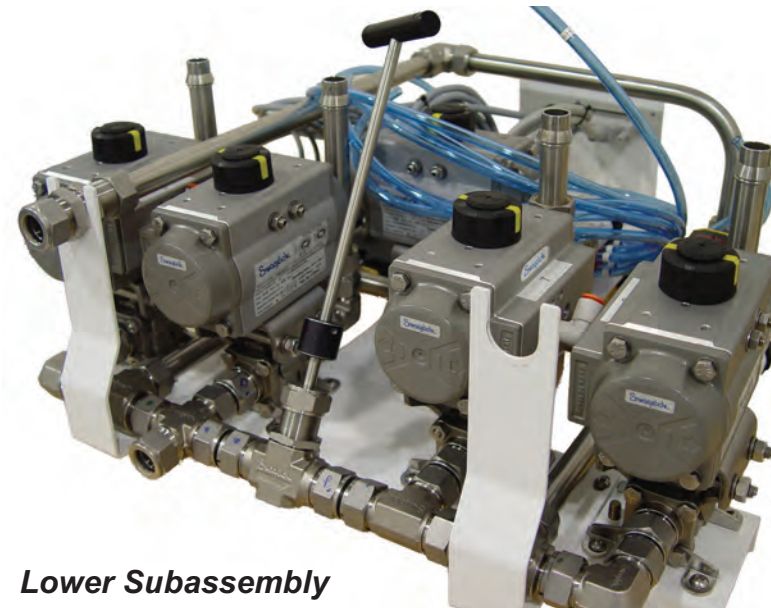
This manifold assembly is complex and needed to fit into a very small and predetermined space. The assembly consists of three individual subassemblies with pneumatically controlled ball valves and manual needle valves interconnected by uniquely designed Swagelok tube fittings that allow for a very compact assembly. The manifold connects a heat exchanger/ chiller to equipment that requires precise and automated temperature control. In addition, the valves needed to be capable of cycling more than a million times without repair or adjustment.



**Upper Subassembly 1**



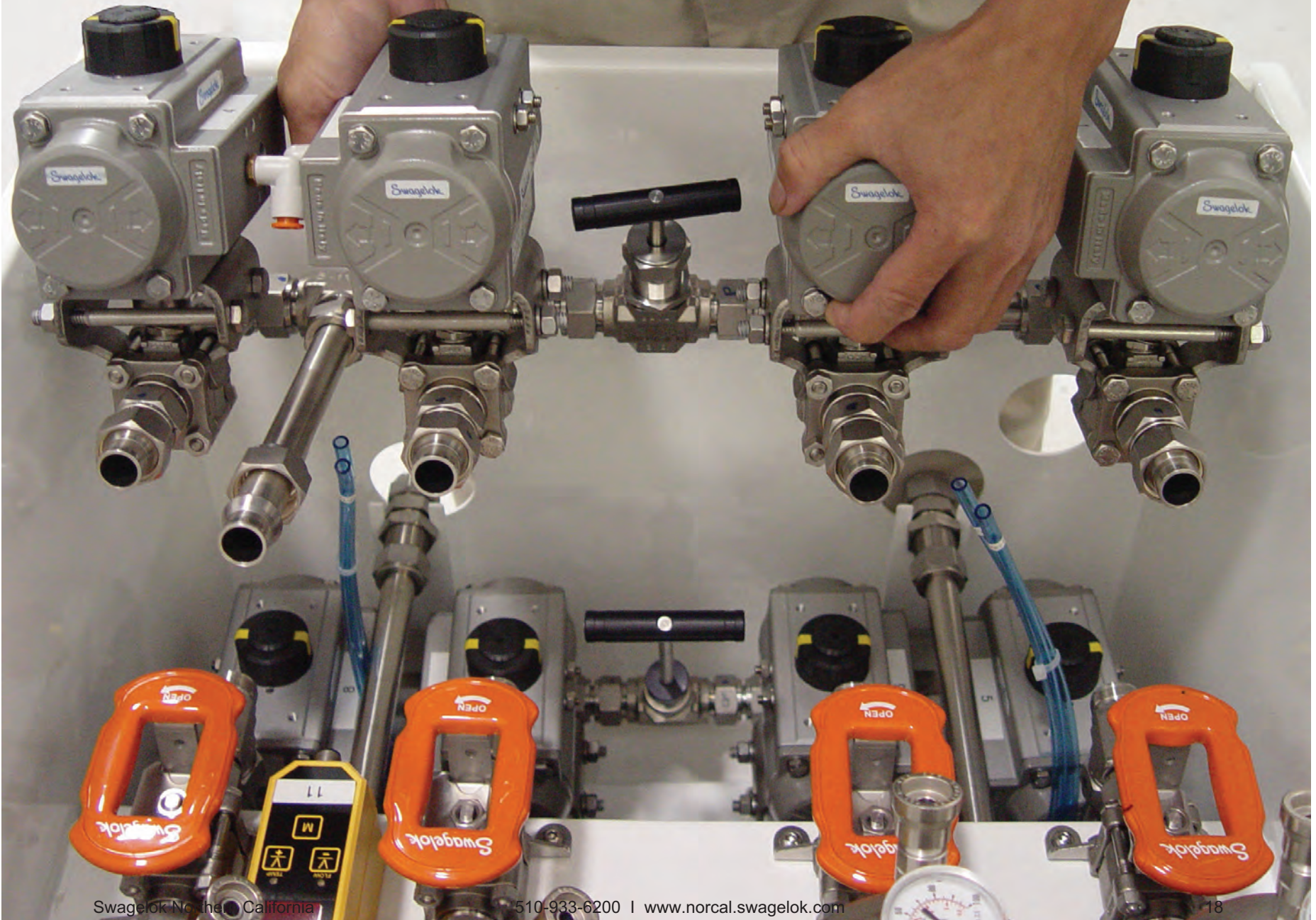
**Upper Subassembly 2**



**Lower Subassembly**



*...and we're ready to build it for you*





# Contact us

Jeff Hopkins

Swagelok Northern California

510-933-6200

[jhopkins@swagelok.com](mailto:jhopkins@swagelok.com)

<http://northerncal.swagelok.com/>



Swagelok, VCR, MicroFit, Perma-Tag — TM Swagelok Company

© 2012 Swagelok Northern California