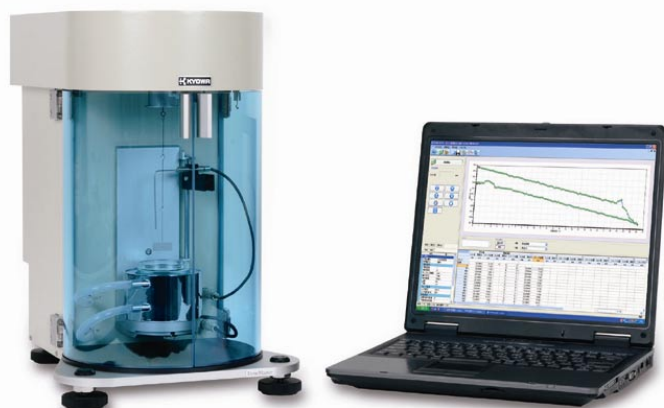


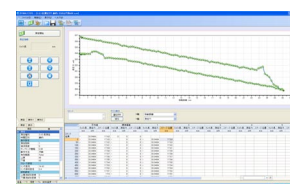
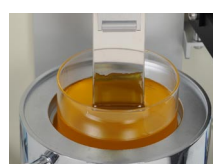
Dynamic contact angle measurement, Powder wettability analysis

DyneMaster DY-700/500

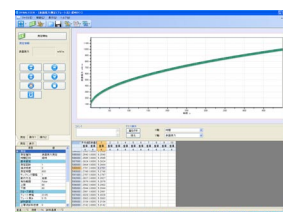


DY-700
External view of DY-500 is as same as that of DY-700.

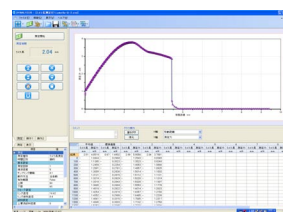
High-end surface tensiometers that perform measuring dynamic contact angle and powder contact angle, lamella length and liquid density in addition to surface/interfacial tension.



Dynamic contact angle



Powder contact angle



Lamella length

Features:

- ◆ Fully automatic operation by single command button.
- ◆ Built-in stirrer functions in the stage.
- ◆ Dynamic contact angle (advancing/receding angle) measurement by Wilhelmy method (Option of DY-700)
- ◆ Powder contact angle measurement to evaluate wetting phenomena of powder samples (Option of DY-700/500)
- ◆ Lamella length measurement
- ◆ Liquid density measurement by pycnometer

Typical applications:

- ◆ **Dynamic contact angle:** evaluating coating property
- ◆ **Powder contact angle:** evaluating wettability, dispersiveness of powder sample
- ◆ **Lamella length:** evaluating foaming stability of coating agents

Specifications:

	DY-700	DY-500
Measurement method	<ul style="list-style-type: none"> • Surface/interfacial tension • Dynamic contact angle • Powder contact angle & wetting speed • Lamella length measurement, • Liquid density measurement (Pycnometer) 	<ul style="list-style-type: none"> • Surface/interfacial tension • Powder contact angle & wetting speed • Lamella length measurement, • Liquid density measurement (Pycnometer)
Measurement range of S.T.	0~100 mN/m	*Balance capacity & displaying range: 0~1000mN/m
Measurement accuracy*	0.02 mN/m	0.2 mN/m
Resolution		0.01 mN/m
Stage speed, stroke	0.002~50 mm/s, 50mm	
Standard measurement unit	Platinum plate	
Optional measurement unit & kit	Platinum ring, Density measurement kit, Dynamic contact angle measurement kit, Powder contact angle measurement kit	
Measurement temperature	Ambient~150°C (Heater type), 10~70°C (Jacket type)	
External dimensions	295(W) × 415(D) × 452(H)mm	295(W) × 415(D) × 452(H)mm
Weight	About 23kg	About 20kg
Electric power	AC100-240~50/60Hz	

*standard deviation of repeatability

The specifications are subject to change without notice.

1001