

PRODUCT DATA SHEET

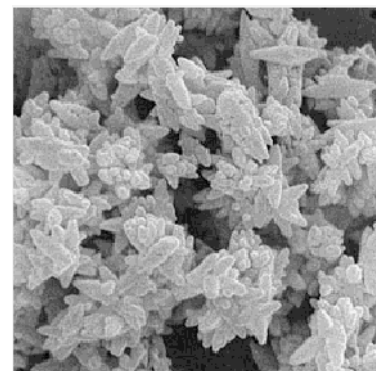
CALPREC PA

1. DESCRIPTION

High purity, small sized Precipitated Calcium Carbonate in powder, as aggregated crystals of scalenohedral calcite.

2. USES

- High brightness, opacity enhancing filler in special papers.
- White pigment and hiding power enhancer in paints.
- Titanium dioxide extender.



3. CHARACTERISTICS

DETERMINATION	PROCEDURE	STANDARD SPECIFICATION	TYPICAL DATA	UNIT
Crystalline structure	Infrared spectrometry	> 98,5	100	% calcite
Calcium (CaCO ₃)	Volumetry	> 98,5	98,5	%
Residual Alkalinity	Volumetry	< 0,5	0,28	%
Mean particle diameter (D4,3)	Laser Diffraction	1,4 – 2,0	1,7	µm
Moisture content	Weight lost	< 1	0,5	%
Whiteness relative to MgO (R457 filter)	Elrepho Spectrophotometer	> 95	95,5	%
Chrome (Cr)	EAA	< 10	< 10	ppm
Lead (Pb)	EAA	< 3	< 3	ppm
Arsenic (As)	EAA-GH	< 1	< 1	ppm

4. PACKAGING

On pallets (42 bags x 25 kg) or Bulk

PRODUCT DATA SHEET

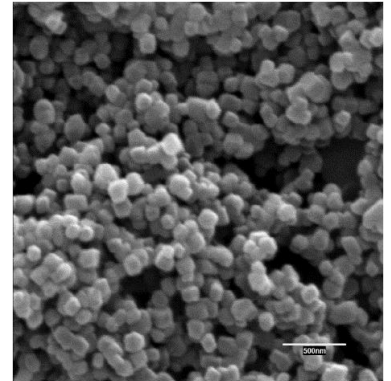
CALPREC PR

1. DESCRIPTION

Calprec PR is a ultrafine coated precipitated calcium carbonate. Its main properties are: high purity, narrow crystal size distribution in the nanometric range, and organic surface treatment.

2. USES

- Rheology modifier filler in sealants.
- Processing aid and reinforcer filler in rigid PVC.
- Mineral additive in a wide range of plastic and elastomeric applications.



3. CHARACTERISTICS

DETERMINATION	PROCEDURE	STANDARD SPECIFICATION	TYPICAL DATA	UNIT
Crystal form	FTIR spectrometer	Calcite	Calcite	-
Calcium content (as CaCO ₃ before coating)	Volumetry	> 98	98,5	%
Mean particle diameter	Air permeability	0,03 - 0,07	0,05	µm
Moisture content	Loss on drying at 110°C	< 0,6	0,3	%
North fineness	North fineness gauge	< 60	10	µm
Rheological properties:	Mettler rheometer			
Yield value		210 - 260	235	Pa
Viscosity		0,50 - 0,70	0,60	Pa.s
Brightness (R457 nm)	ColorFlex EZ 45/0	> 89	93	%
Organic coating content	Ether extraction	2,4 - 3,2	2,8	%
Free flowing density	ISO 903	0,30 - 0,40	0,35	g/cm ³

4. PACKAGING

On pallets (42 bags x 25 kg), Big Bags or Bulk