

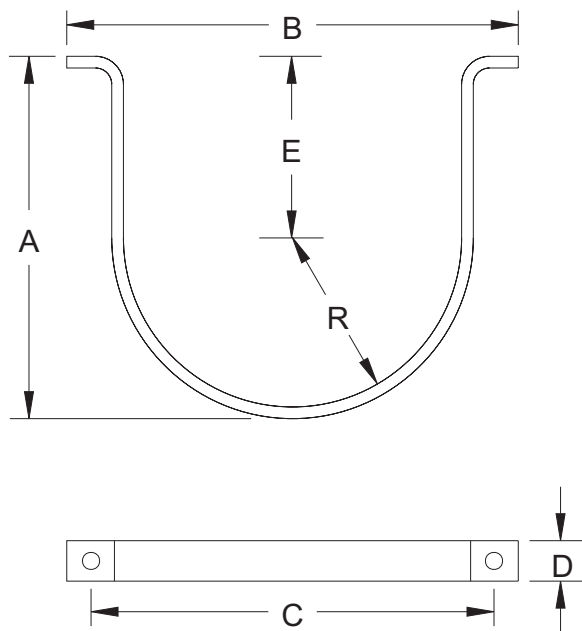
CO₂ Component Description

Carbon Dioxide Single Cylinder Straps

Effective: April 2005

K-81-1230

PART NUMBER	CYLINDER SIZE	A		B		C		D		E		R	
		IN	MM	IN	MM	IN	MM	IN	MM	IN	MM	IN	MM
270012	10	6.22	158	9.81	249	8.75	222	1.00	25.4	2.62	66.5	3.41	86.6
210013	15 & 20	6.44	164	10.8	274	9.63	245	1.00	25.4	2.36	60.4	3.88	96.6
270014	25, 35, & 50	7.94	202	11.5	292	10.4	264	1.00	25.4	3.5	88.9	4.25	108
62669	75	8.63	143	12.3	312	11.1	282	1.25	31.8	3.75	95.2	4.63	118
270157	100	10.0	254	14.0	356	12.4	315	1.75	44.4	4.5	114	5.31	135



MATERIAL: STEEL

This literature is provided for informational purposes only. KIDDE-FENWAL, INC. assumes no responsibility for the product's suitability for a particular application. The product must be properly applied to work correctly. If you need more information on this product, or if you have a particular problem or question, contact KIDDE-FENWAL INC., Ashland, MA 01721. Telephone: (508) 881-2000

Kidde Fire Systems
 400 Main Street
 Ashland, MA 01721 USA
 Tel: (508) 881-2000
 Fax: (508) 881-8920
<http://www.kiddefiresystems.com>